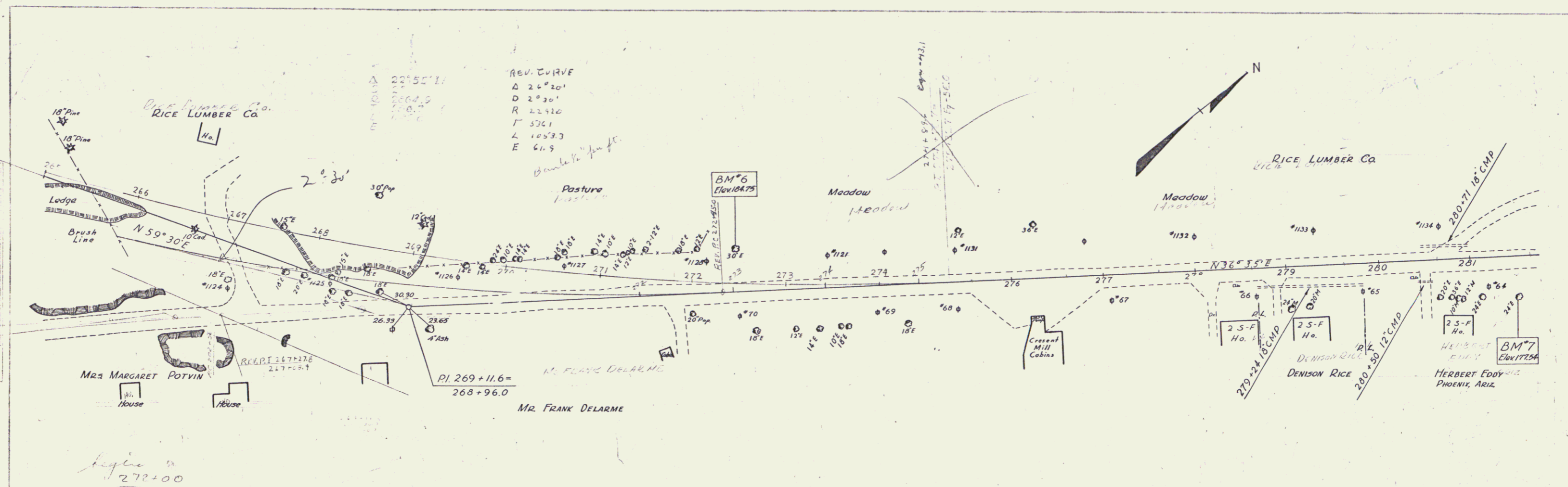
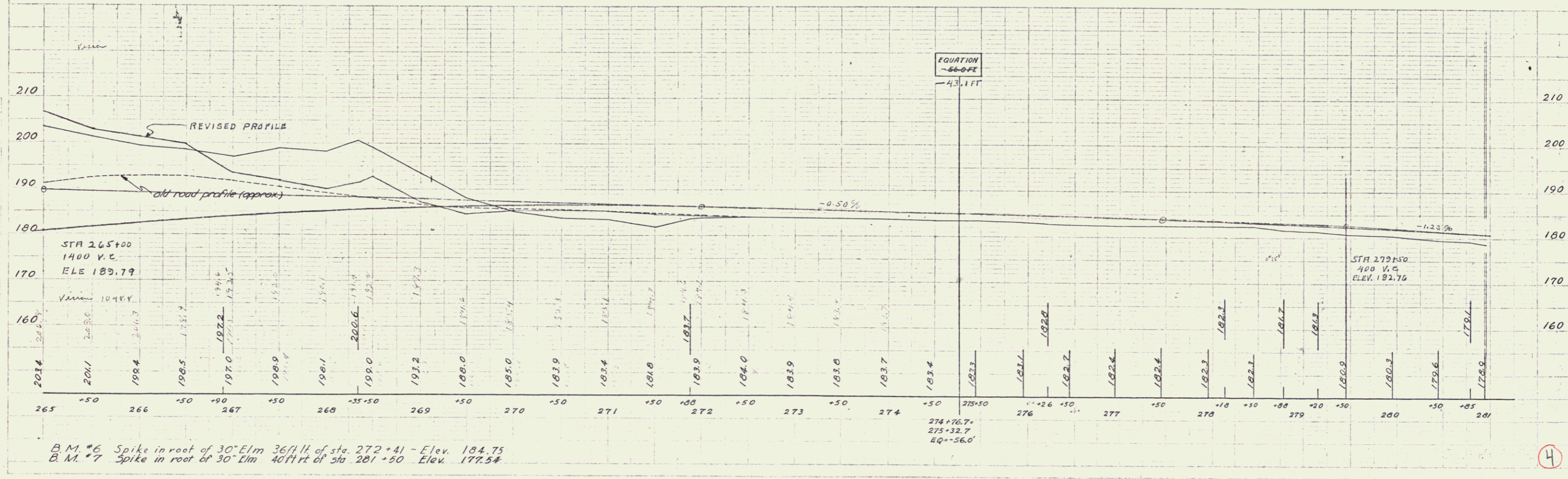


PLAN
 7.45
 8.45
 Spaulding
 Gasworth



PROFILE
 8.45
 Spaulding
 Gasworth



B.M. #6 Spike in root of 30" Elm 36 1/4 ft of sta. 272+41 - Elev. 184.75
 B.M. #7 Spike in root of 30" Elm 40 1/4 ft of sta. 281+50 Elev. 177.54