

INDEX OF SHEETS

SHEET NO	TITLE PAGE
2	TYPICAL CROSS-SECTION OF IMPROVEMENT
3	PLAN AND PROFILE STA. 0+00 TO STA. 16+00
4	16+00 - 32+00
5	32+00 - 48+00
6	48+00 - 64+00
7	64+00 - 80+00
8	80+00 - 96+00
9	96+00 - 112+00
10	112+00 - 128+00
11	128+00 - 144+00
12	144+00 - 159+00
13	159+00 - 173+00
14	173+00 - 189+00
15	189+00 - 204+00
16	204+00 - 213+00
17-29	CROSS-SECTIONS

STATE OF VERMONT
STATE HIGHWAY DEPARTMENT

PLAN AND PROFILE OF PROPOSED
STATE HIGHWAY
FEDERAL AID PROJECT

TOWNS OF SO. BURLINGTON AND SHELburnE

SHELburnE ROAD

Pin # 99R436

FROM BURLINGTON-SO. BURLINGTON LINE SOUTHERLY 21300 FEET.

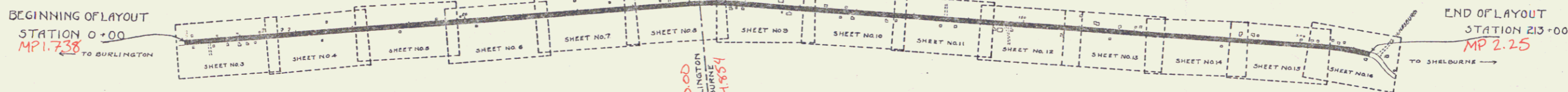
FED. ROAD DIST. NO.	STATE	FED. AID PROJ. NO.	FISCAL YEAR	SHEET NO.	TOTAL SHEETS
3	VT.	13	1919	7	29

(To Be Returned To R.O.W. Division)

FORM OF 57
PERPETUAL

RIGHT-OF-WAY DIVISION
NOISIAI AV-13113

SCALES PLAN 1"=1000'
PROFILE 1"=100' VERT. 1"=100'
CROSS-SECTIONS 1"=20'



LAYOUT
SCALE 1"=1000 FT.

CONVENTIONAL SIGNS

COUNTY LINE	-----	GROUND ELEVATION	-----
TOWN LINE	-----	GRADE ELEVATION	-----
FENCE LINE	-----		
STONE WALL	-----		
UNFENCED PROPERTY	-----		
GUARD RAIL	-----		
TRAVELED WAY	-----		
RAILROAD	-----		
RETAINING WALL	-----		
BASE OR SURVEY LINE	-----		
CULVERT	-----		
DROP INLET	-----		
TROLLEY POLE	-----		
POWER POLE	-----		
TELEPHONE POLE	-----		
TREES	-----		
HEDGE	-----		

CURVE DATA

DEFLECTION ANGLE	Δ
DEGREE OF CURVE	D.
RADIUS OF CURVE	R.
TANGENT DISTANCE	T.
LENGTH OF CURVE	L.
EXTERNAL DISTANCE	E.
POINT OF INTERSECTION	P. I.
POINT OF CURVE	P. C.
POINT OF TANGENT	P. T.

RECOMMENDED
STATE ENGINEER
APPROVED
GOVERNOR
SUBMITTED
STATE HIGHWAY COMMISSIONER

RECOMMENDED
DISTRICT ENGINEER
RECOMMENDED FOR APPROVAL
CHIEF ENGINEER - BUREAU OF PUBLIC ROADS
APPROVED
DIRECTOR - BUREAU OF PUBLIC ROADS

Re U.S. 7

Project No. F 15

1/1/19

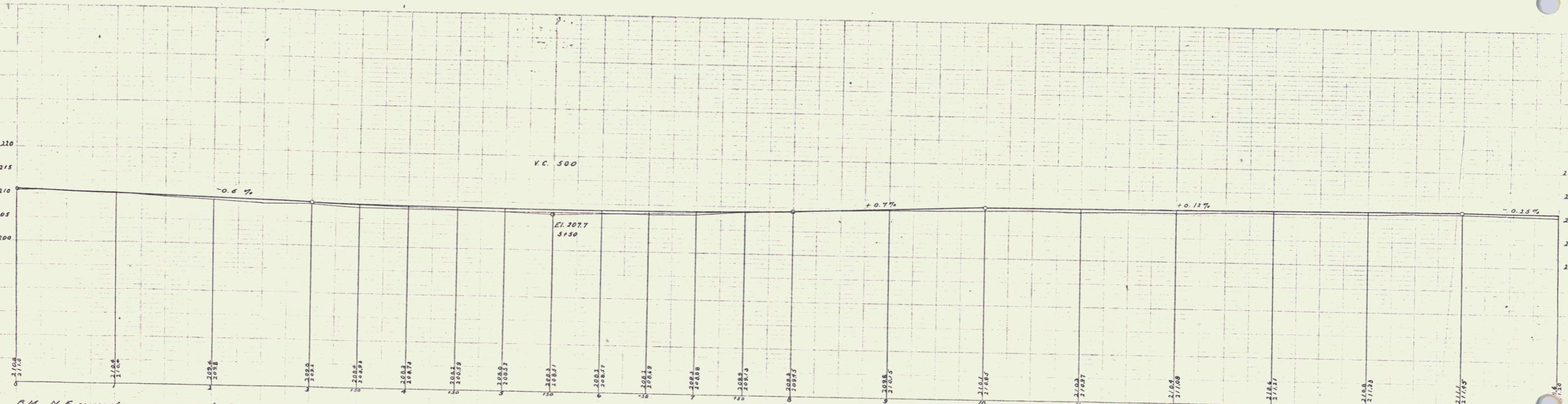
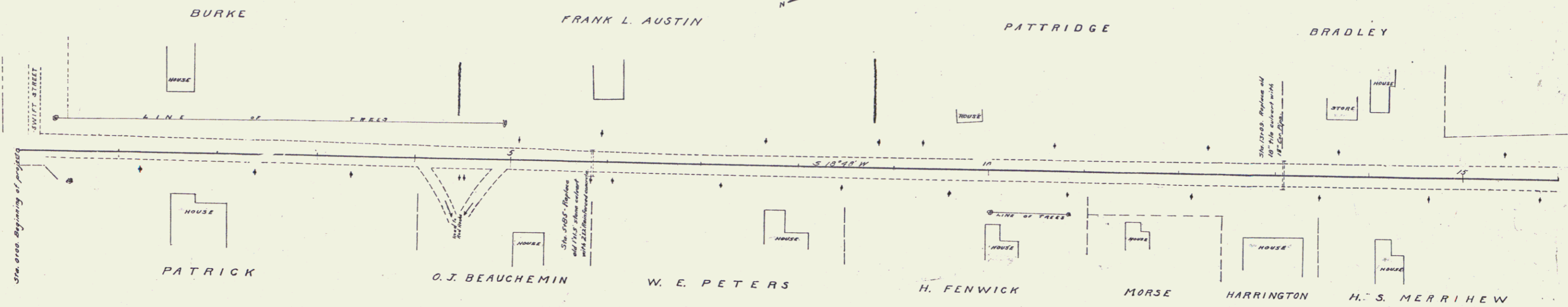
SERIES P NO. 15 FILED
1/1/19

DIST. # 5 PLANS

GUARD RAIL REQUIRED
ON LEFT
 Sta. 5+73 to sta. 5+97 length 24 ft.
 - 12+57 - - 13+21 - 24 -
ON RIGHT
 Sta. 5+73 to sta. 5+97 length 24 ft.
 - 12+57 - - 13+21 - 24 -
TOTAL THIS SHEET 96 ft.

NEW CULVERTS REQUIRED
 Sta. 5+85 2x2 Reinforced Concrete 27.8 ft.
 1-2-4 Concrete 4.3 cu. yds.
 1-3-6 " 7.8 "
 57 cu. ft.
 Sta. 13+09 18" Cor. Iron Pipe 34 ft.
 1-2-4 Concrete Headwalls 1.8 cu. yds.

PERSON	DATE	PER. NO.	ISSUED	SHEET	TOTAL
3	11	15	1919	3	22



B.M. N.E. corner of upper concrete step (on Swift St side) of house on the corner of Swift St and Shelburne Road. Elev. 215.69
 B.M. Threshold, North corner of first house, S.W. corner below road to Red Banks. Opposite Sta 57002. Elev. 209.48
 B.M. South edge of water hole in front of Bradley's store. Opp. Sta. 127. Elev. 211.52

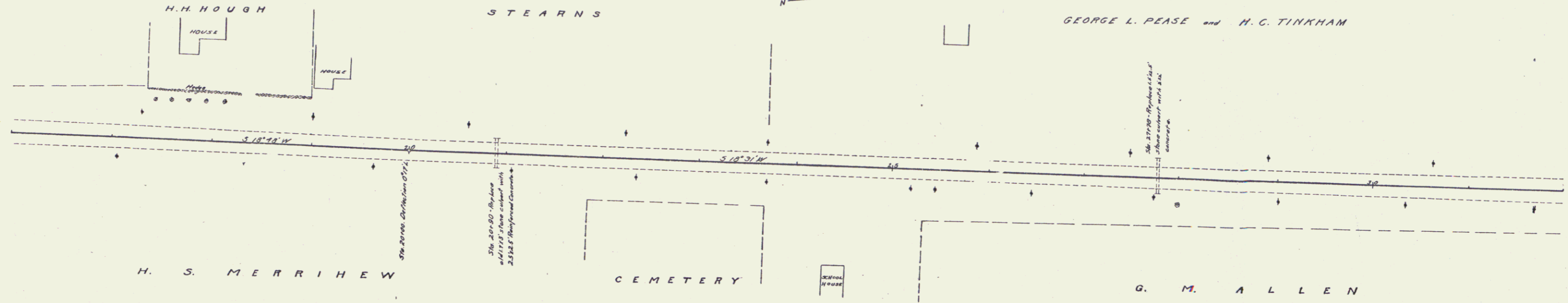
GUARD RAIL REQUIRED
ON LEFT
Sta. 20+70 to sta. 21+02 length 32 ft
" 25+28 " 27+98 " 200'
ON RIGHT
Sta. 20+78 to sta. 21+02 length 24 ft
" 25+28 " 27+98 " 200'
TOTAL THIS SHEET 448 ft

NEW CULVERTS REQUIRED

Sta. 20+30	2.5' x 2.5' Reinforced Concrete	28 ft
	1-2-4 Concrete	35 cu yds.
	1-3-6 "	11 ft
	Steel	35 lbs.
Sta. 27+70	2' x 2' Concrete	28 ft
	1-2-4 "	57 cu yds.
	1-3-6 "	8.2 "

FED. ROAD DIST. NO.	STATE	FED. AID PROJ. NO.	FISCAL YEAR	SHEET NO.	TOTAL SHEETS
5	VT	17	1918	8	2.2

W.B. Davis
 H. H. Hough
 H. S. Merrihue
 G. M. Allen
 G. L. Pease
 H. C. Tinkham



W.B. Davis
 H. H. Hough
 H. S. Merrihue
 G. M. Allen
 G. L. Pease
 H. C. Tinkham

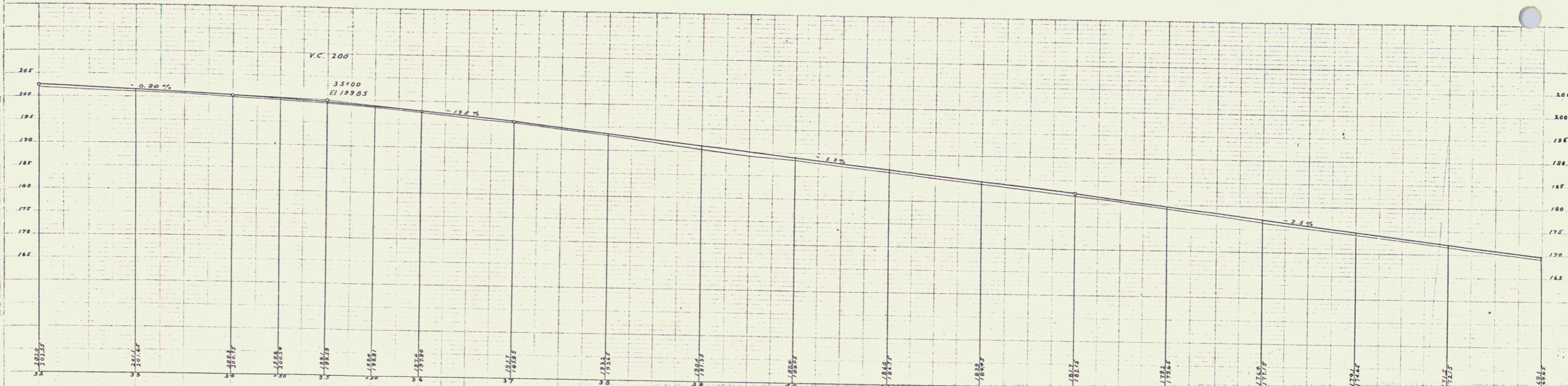


Series C. 1918 Filed
 3

FED. ROAD DIST. NO.	STATE	FED. AID PROJ. NO.	FISCAL YEAR	SHEET NO.	TOTAL SHEETS
5	VT	17	1918	5	23

W.B. BROWN
 CIVIL ENGINEER
 1111 W. BROAD ST.
 BURLINGTON, VT.

W.B. BROWN
 CIVIL ENGINEER
 1111 W. BROAD ST.
 BURLINGTON, VT.



B.M. North corner of S.E. entrance stone (to Pierson's) at South of entrance. Elev. 196.08
 B.M. West stone of North end of culvert, in front of Cooney's. Elev. 177.20.

SHEET NO. 5 OF 23
 4

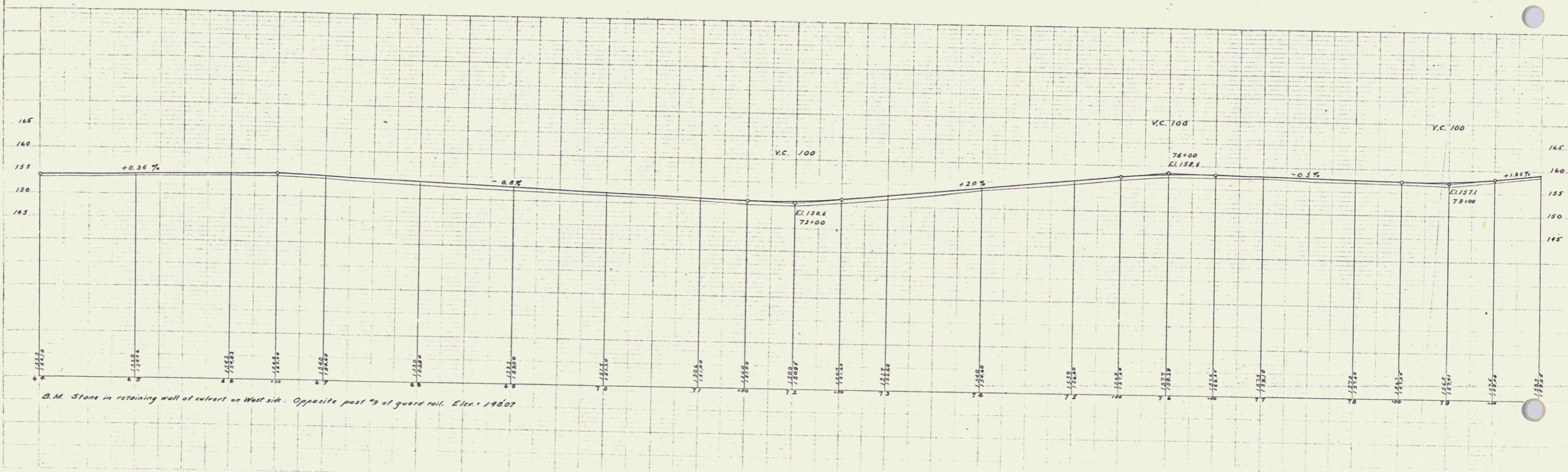
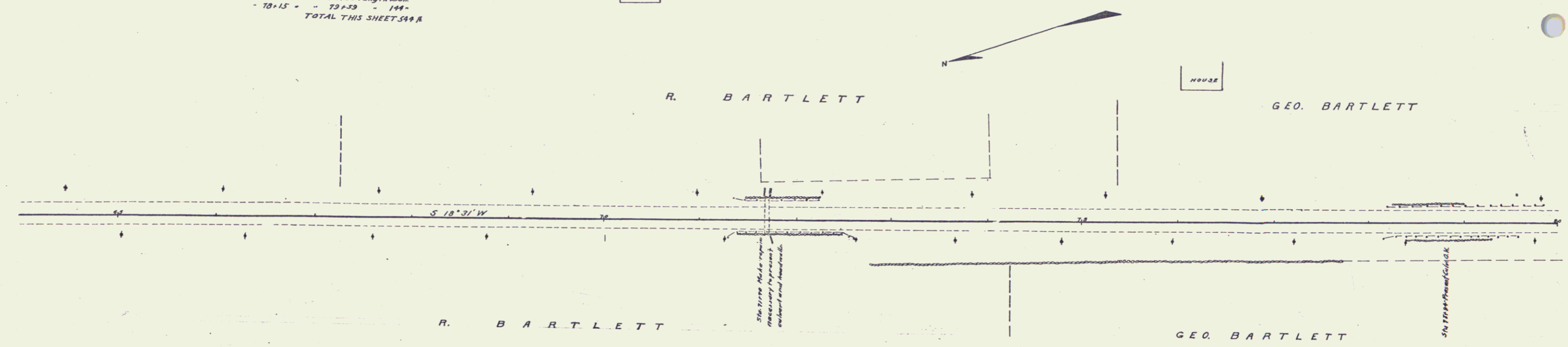
STONE BASE REQUIRED
Sta 64+00 to sta 71+00 Length 700R

GUARD RAIL REQUIRED
ON LEFT
Sta 71+35 to sta 72+31 length 96R
- 78+48 - " 79+25 - 168 -
ON RIGHT
Sta 71+27 to sta 72+53 length 126R
- 78+15 - " 79+59 - 144 -
TOTAL THIS SHEET 544R

CULVERT REPAIRS REQUIRED
Sta 71+70 1-3-6 Concrete 18 cu yds

FED. ROAD DIST. NO.	STATE	FED. AID PROJ. NO.	FISCAL YEAR	SHEET NO.	TOTAL SHEETS
9	VT	11	1918	7	10

R. B. Bartlett
 Geo. Bartlett
 R. B. Bartlett
 Geo. Bartlett



R. B. Bartlett
 Geo. Bartlett
 R. B. Bartlett
 Geo. Bartlett

Series C. No. 45. Filed 5/24/18

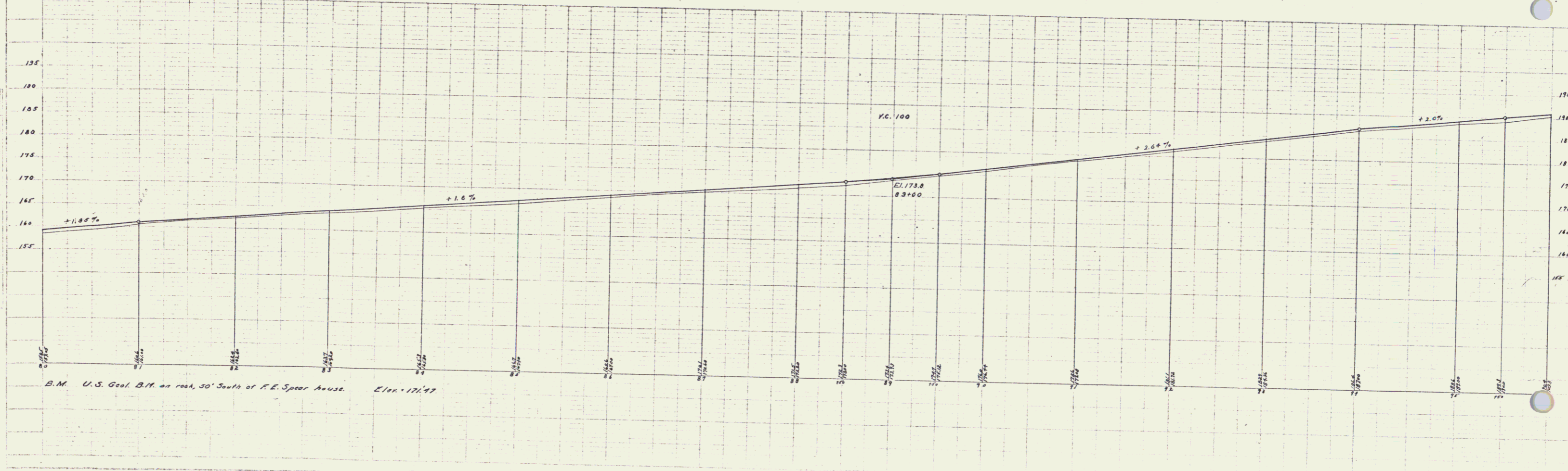
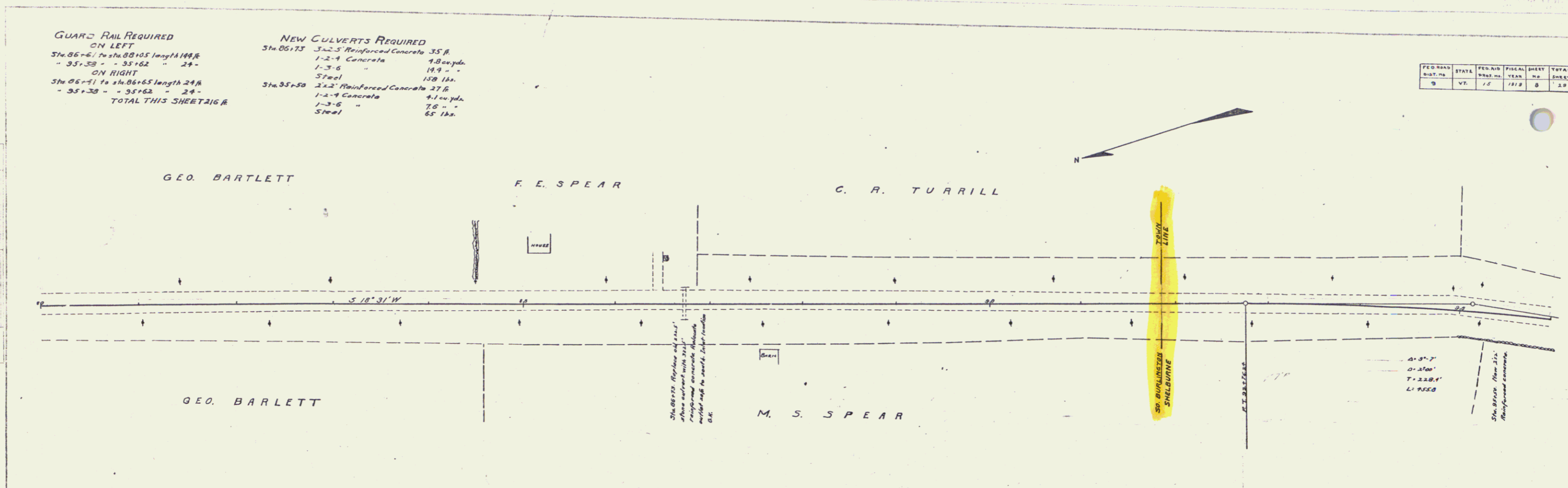
GUARD RAIL REQUIRED
ON LEFT
Sta. 86+61 to Sta. 88+05 length 44.44 ft
- 35+38 - 35+62 - 24 -
ON RIGHT
Sta. 85+71 to Sta. 86+65 length 24 ft
- 35+38 - 35+62 - 24 -
TOTAL THIS SHEET 16 ft

NEW CULVERTS REQUIRED
Sta. 86+73 3x2.5' Reinforced Concrete 35 ft
1-2-4 Concrete 4.8 cu yds.
1-3-6 " 19.9 " "
Steel 159 lbs.
Sta. 85+50 3x2.5' Reinforced Concrete 37 ft
1-2-4 Concrete 4.1 cu yds.
1-3-6 " 7.0 " "
Steel 65 lbs.

FED. ROAD DIST. NO.	STATE	FISCAL YEAR	PROJECT NO.	SHEET NO.	TOTAL SHEETS
9	VT.	1918	8	24	

W. B. Bartlett
F. E. Spear
G. R. Turrill
M. S. Spear

W. B. Bartlett
F. E. Spear
G. R. Turrill
M. S. Spear



B.M. U.S. Geol. B.M. on road, 30' South of F.E. Spear House. Elev. 171.97

Series F. No. 15. Filed 5/11/1918

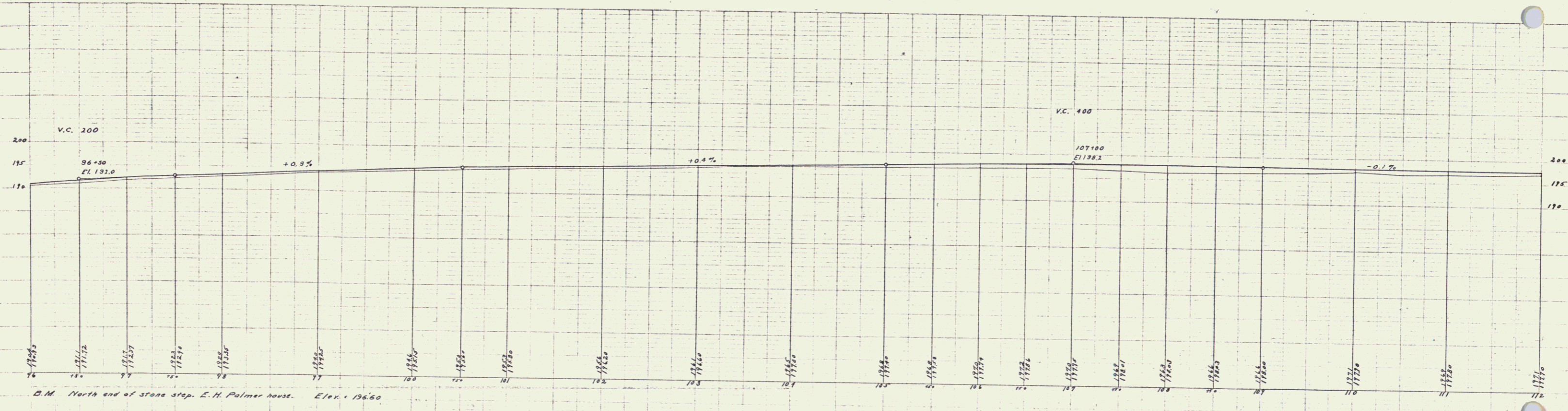
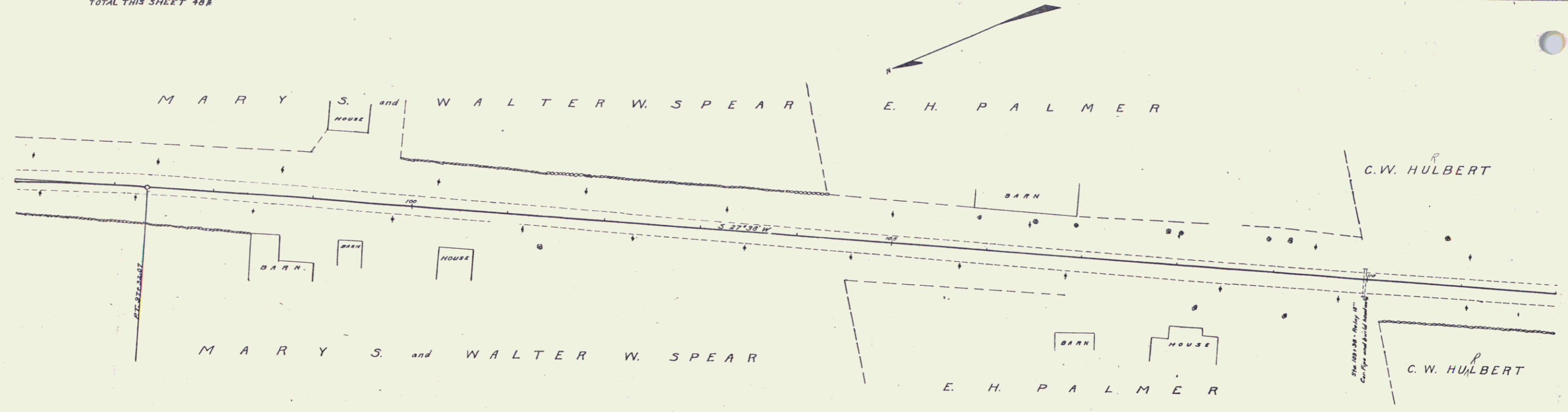
7

GUARD RAIL REQUIRED
ON RIGHT
Sta. 103+86 to Sta. 110+10 length 248
ON LEFT
Sta. 103+86 to Sta. 110+10 length 248
TOTAL THIS SHEET 488

NEW CULVERTS REQUIRED
Sta. 109+38 1-2-4 Concrete Headwalls 4.0 cu yds.

FED. ROAD DIST. NO.	STATE	FED. AID PROJ. NO.	FISCAL YEAR	SHEET NO.	TOTAL SHEETS
9	VT	1-5	1978	9	12

W.B. B. & Co. 3/10/18
MANUFACTURED COPY 1/1/18
L.A.M. 1/1/18
SPEC. BORN 1/1/18
NO. 1/1/18



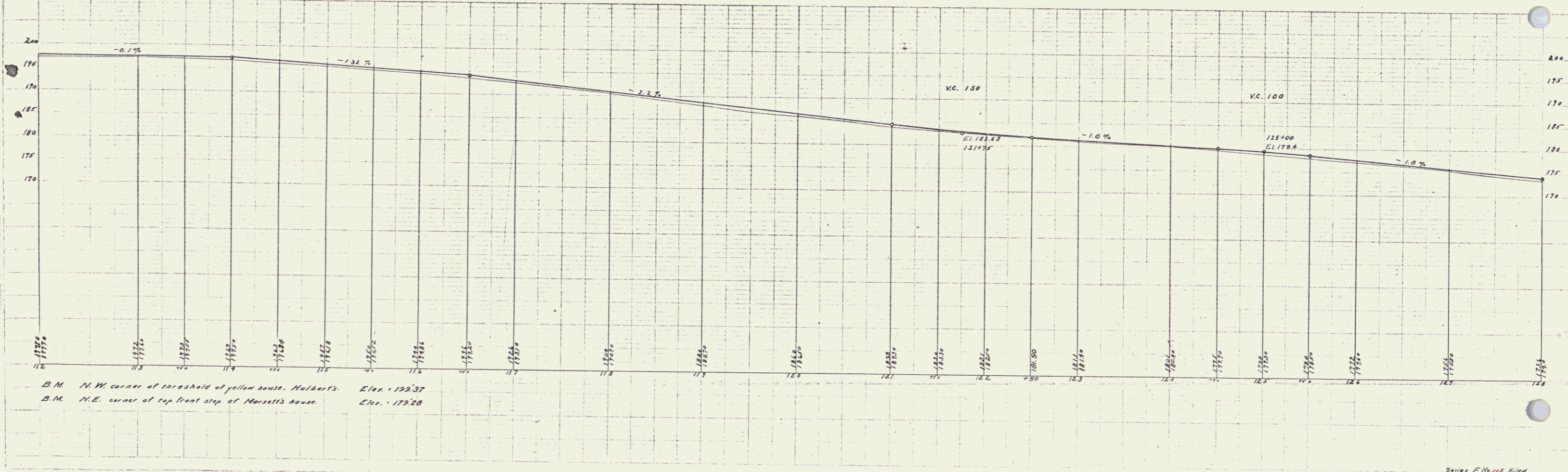
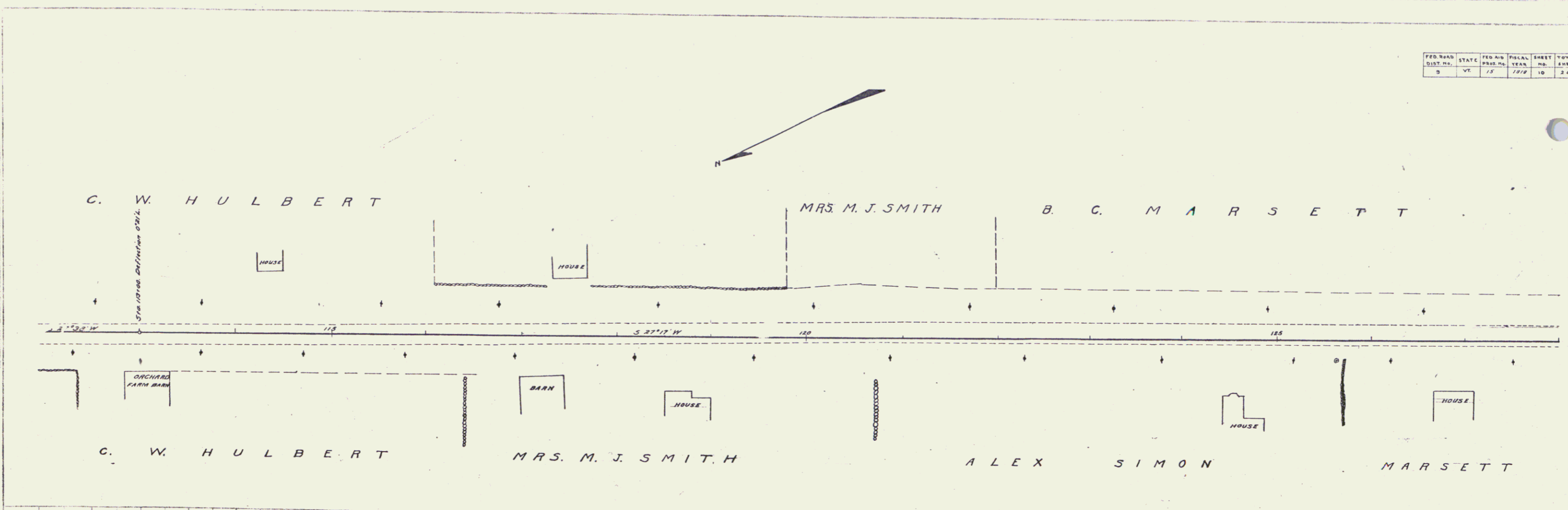
D.M. North end of stone step, E. H. Palmer house. Elev. 196.60

Series F No. 15 Filed Sheet 9 of 12

8

FED. ROAD DIST. NO.	STATE	FED. AID PROJ. NO.	FISCAL YEAR	SHEET NO.	TOTAL SHEETS
0	VT	18	1948	10	24

TOWN OF
 W. B. BROWN
 SUBDIVISION OF
 1948
 MAP NO. 1000
 1000
 1000
 1000

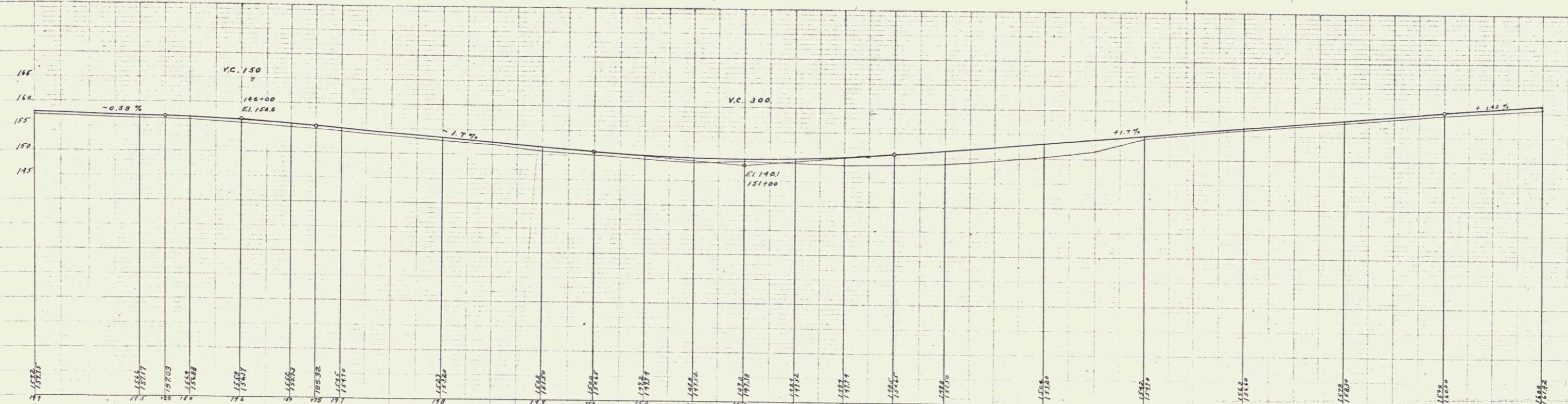
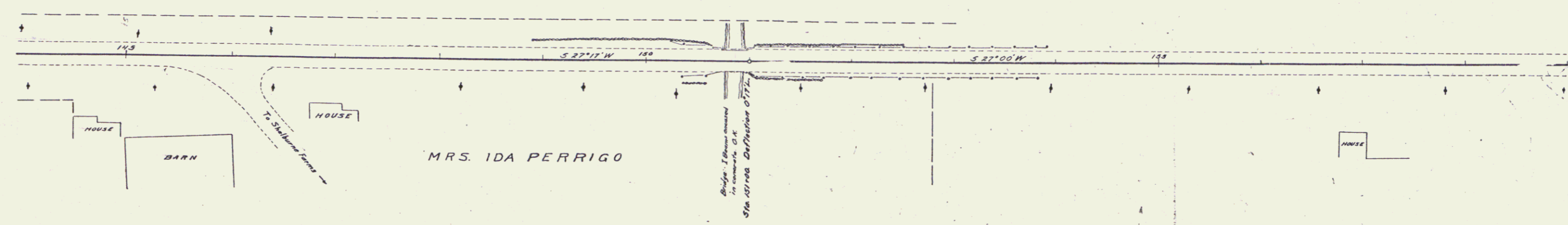
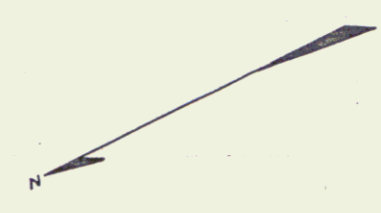


Series F-100
 544000-10

GUARD RAIL REQUIRED
 ON LEFT
 Sta. 148+00 to Sta. 150+74 length 104 ft
 - 150+30 - " 154+66 = 368 -
 ON RIGHT
 Sta. 150+34 to Sta. 150+74 length 40 ft
 - 150+30 - " 154+66 = 368 -
TOTAL THIS SHEET 960 ft

FED. ROAD DIST. NO.	STATE	FED. AID PROJ. NO.	FISCAL YEAR	SHEET NO.	TOTAL SHEETS
3	VT	15	1970	18	33

H E N R Y R O W L E Y



B.M. N.E. corner of threshold of first house north of road to Shelburne Farms, on west side of road. Elev. 148.33
 B.M. N.E. corner of East end face wall of bridge. Elev. 148.76

H.B. Moore
 Assistant City Engineer
 1/24/70

W.D. Moore
 City Engineer
 1/24/70

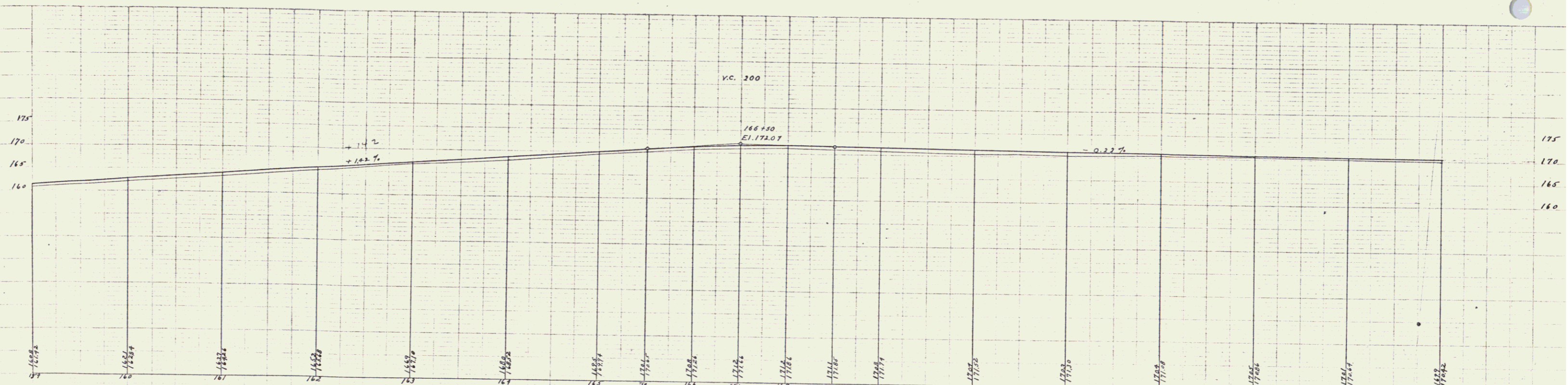
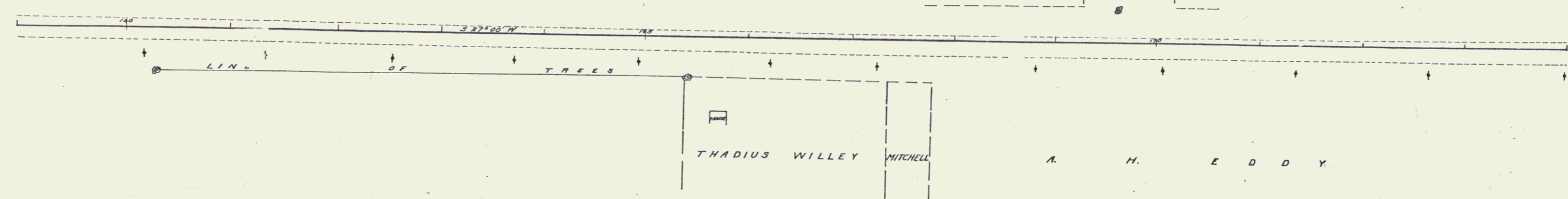
FED. ROAD DIST. NO.	STATE	FED. AID PROJ. NO.	FINANCIAL YEAR	SHEET NO.	TOTAL SHEETS
9	VT.	18	1978	13	20

H E N R Y R O W L E Y

M I T C H E L L

G E O . W I L L E Y

M . M . F A R R E L L



B.M. N.W. corner of threshold of front door, of Rowley house, on East side of road Elev. 172.19
 B.M. N.W. corner of threshold of Farrell house Elev. 173.09

W.B. Burke
 State Engineer
 Vermont
 State Engineer's Office
 Montpelier, Vermont

W.B. Burke
 State Engineer
 Vermont
 State Engineer's Office
 Montpelier, Vermont

GUARD RAIL REQUIRED
ON LEFT
Sta. 176+70 to sta. 178+70 length 200ft
" 107+91 " " 107+65 " 24"
ON RIGHT
Sta. 176+70 to sta. 178+70 length 200ft
" 107+91 " " 107+65 " 24"
TOTAL THIS SHEET 448A

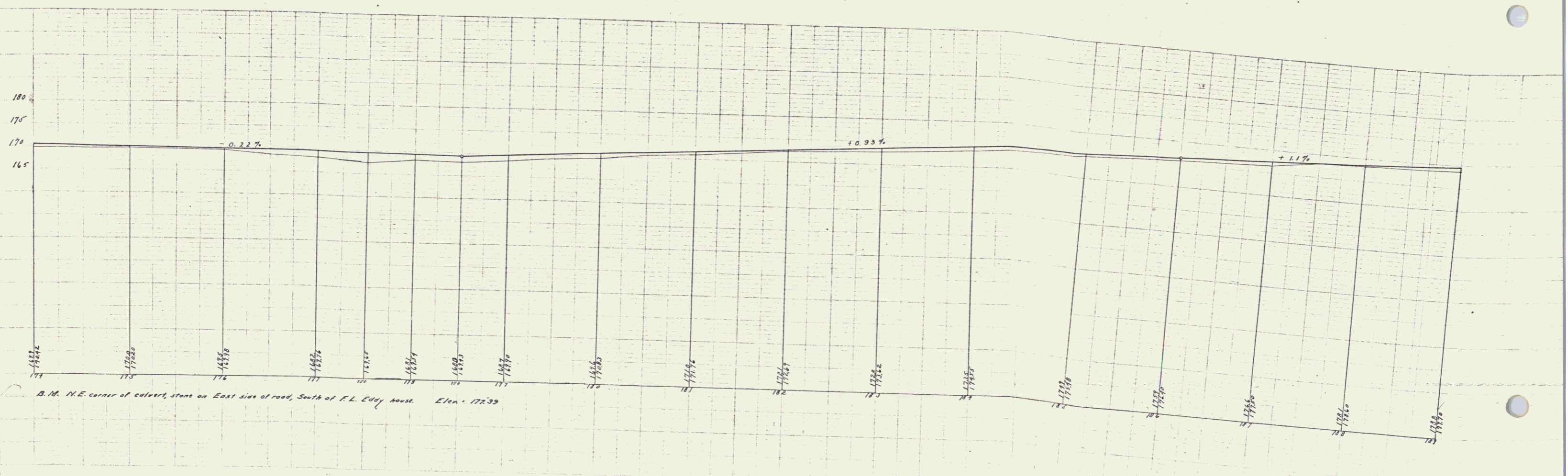
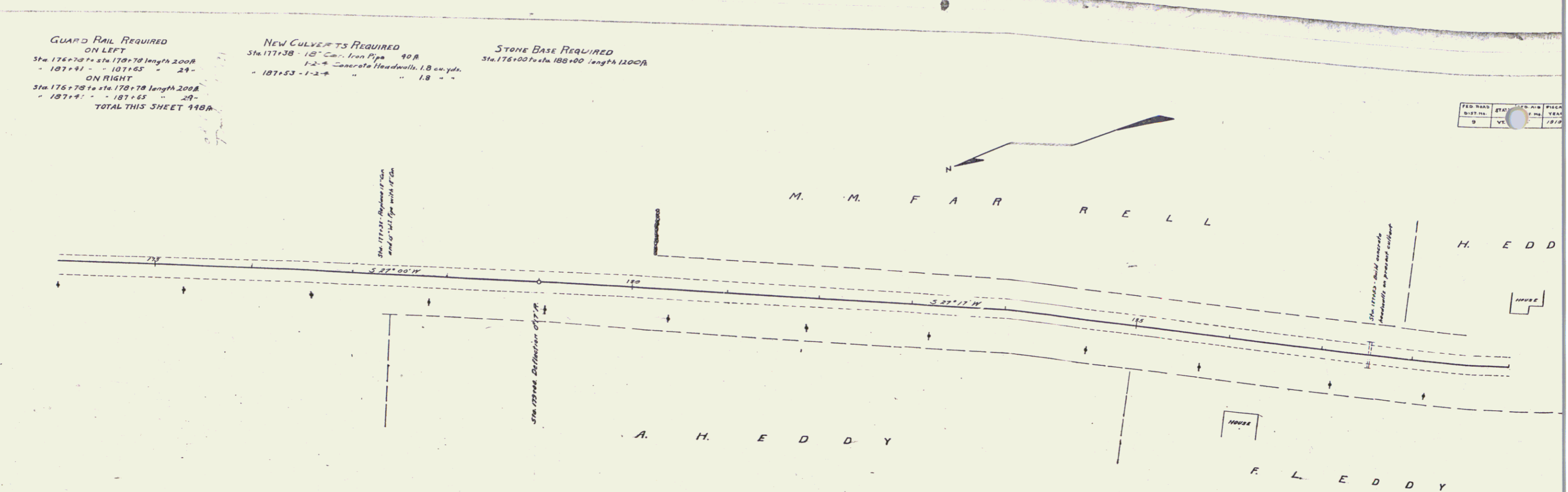
NEW CULVERTS REQUIRED
Sta. 177+38 - 18" C.I. Iron Pipe 40ft
" 182+4 " Concrete Headwalks 1.8 cu. yds.
" 107+53 - 1-2' " " 1.8 "

STONE BASE REQUIRED
Sta. 176+00 to sta. 188+00 length 1200ft

FED. ROAD DIST. NO.	SECTION	DATE	BY	SCALE
9	VE	1919		

W. B. BAKER
R. J. WATSON and C. L. GAY
CIVIL ENGINEERS
ST. LOUIS, MO.

W. B. BAKER
C. L. GAY
R. J. WATSON
CIVIL ENGINEERS
ST. LOUIS, MO.



B.M. N.E. corner of culvert, starts on East side of road, South of F. L. Eddy house. Elev. 172.39

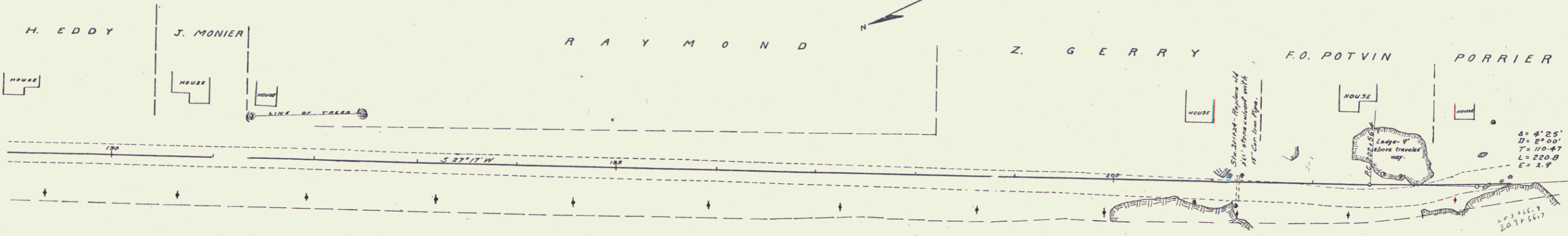
13
Series No. 45-53

GUARD RAIL REQUIRED
 ON LEFT
 Sta 198+69 to Sta 202+16 length 352 ft.
 ON RIGHT
 Sta 201+12 to Sta 201+35 length 24 ft.
 TOTAL THIS SHEET 376 ft.

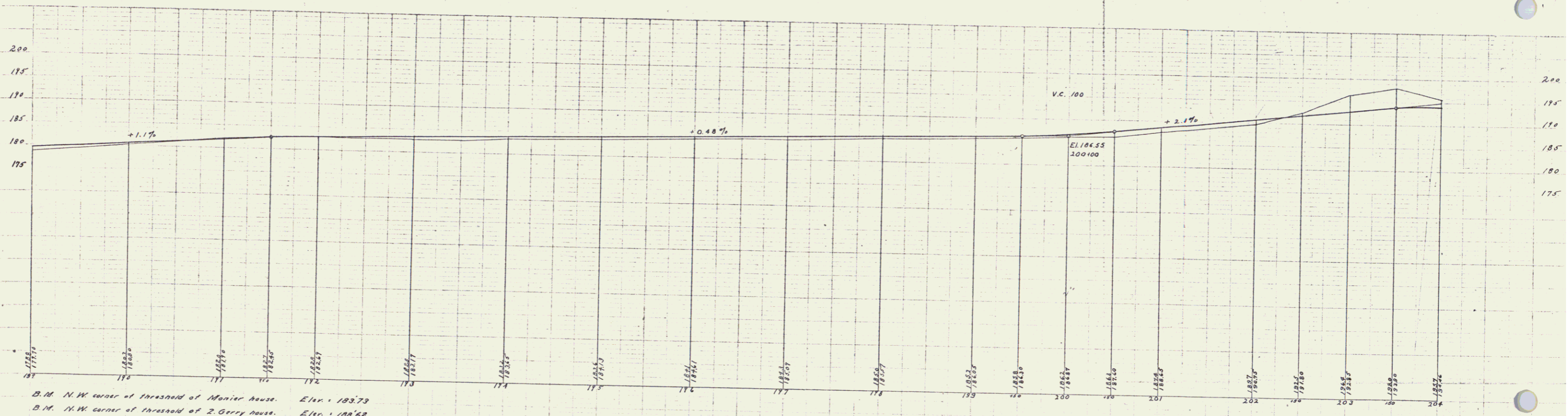
NEW CULVERTS REQUIRED
 Sta 201+24 18" Cor. Iron Pipe 30 ft.
 1-2' Concrete Handwalk 1.8 m. yds.

FED. ROAD DIST. NO.	STATE	FILE NO.	SHEET NO.	TOTAL SHEETS
5	VT	15	18	23

M.B. Drake
 R.A. Merrill and Sidney W. Hill
 CIVIL ENGINEERS
 100 N. CHURCH ST. VERMONT
 1919



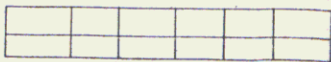
M.B. Drake
 R.A. Merrill and Sidney W. Hill
 CIVIL ENGINEERS
 100 N. CHURCH ST. VERMONT
 1919



D.M. N.W. corner of threshold of Monier house. Elev. 183.73
 D.M. N.W. corner of threshold of Z. Gerry house. Elev. 183.62

Series K. No. 15. Road
 Sheet 18 of 23

161



15A

15

STONE BASE REQUIRED
Sta 205+00 to sta. 213+00 length 800 ft

FED. ROAD DIST. NO.	STATE	FED. AID FUNDING YEAR	PROJECT NO.	SHEET NO.	TOTAL SHEETS
9	VT.	15	1010	16	20

W.B. Eddy
R.A. Moore & C. Day
Surveyors

W.B. Eddy
R.A. Moore
C. Day
Surveyors

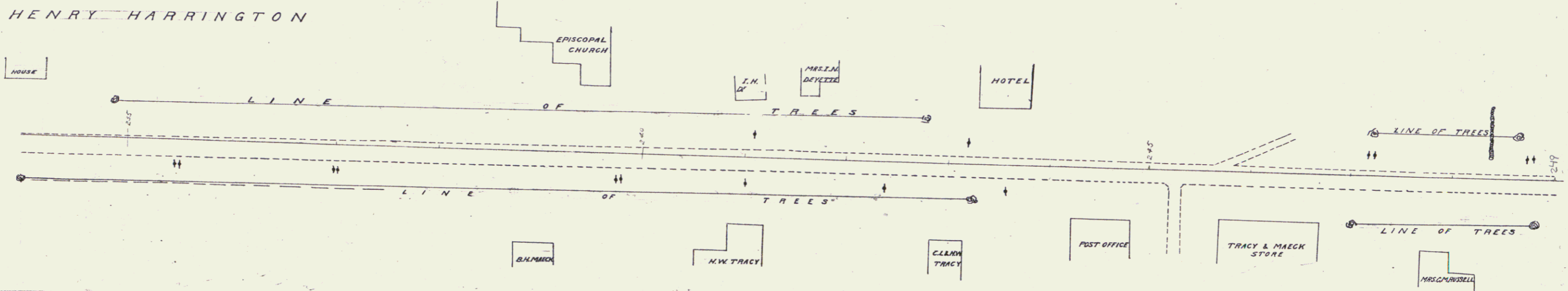


B.M. N.W. corner of threshold of N. Charbonneau house. Elev. 183.60 No. 25
B.M. S.W. corner of threshold of first house south of Charbonneau's. Elev. 180.13 No. 26

Survey F.M. S. Filed
Sept 16, 1915

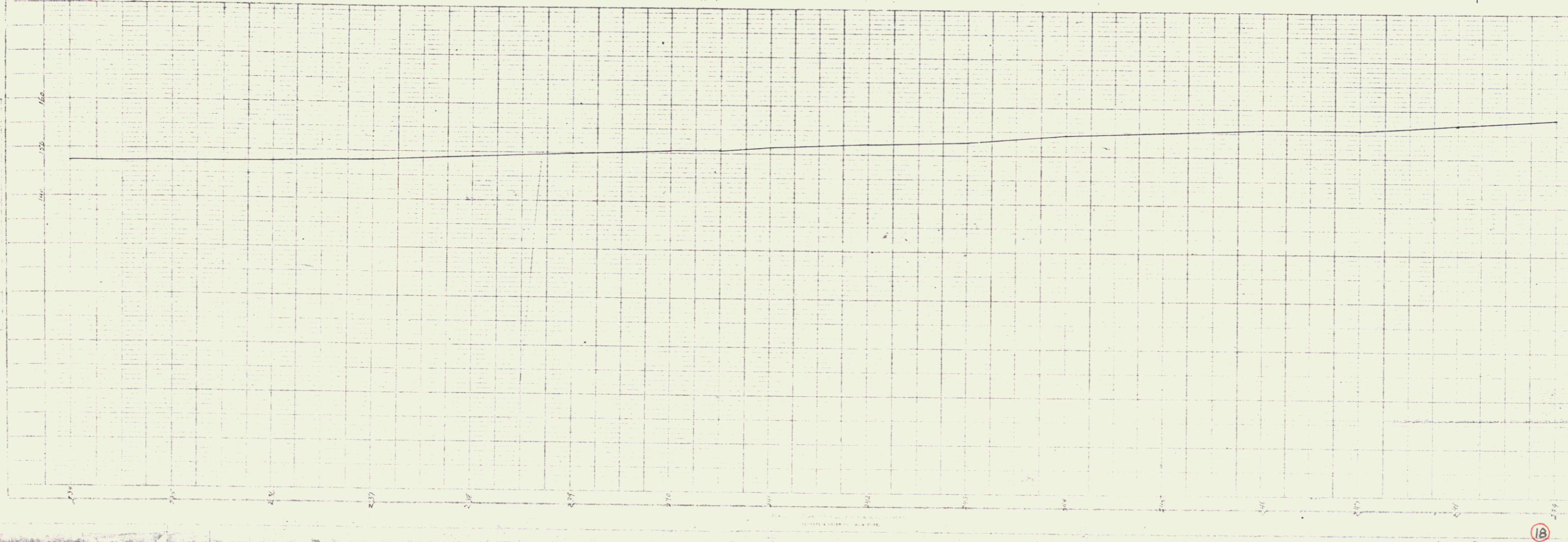
FED. ROAD DIST. NO.	STATE	FED. AID PROJ. NO.	FED. AID YEAR	SHEET NO.	TOTAL SHEETS
9	VT			18	

HENRY HARRINGTON



PLAN
NOTED BY
DATE

SCALE
1" = 100'



So Burlington

18

18