

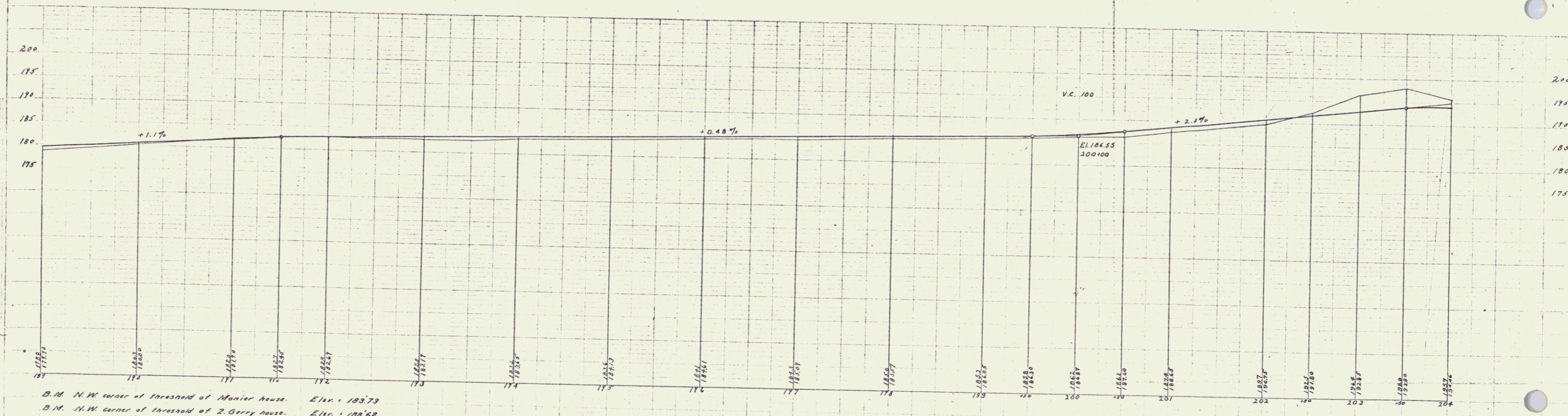
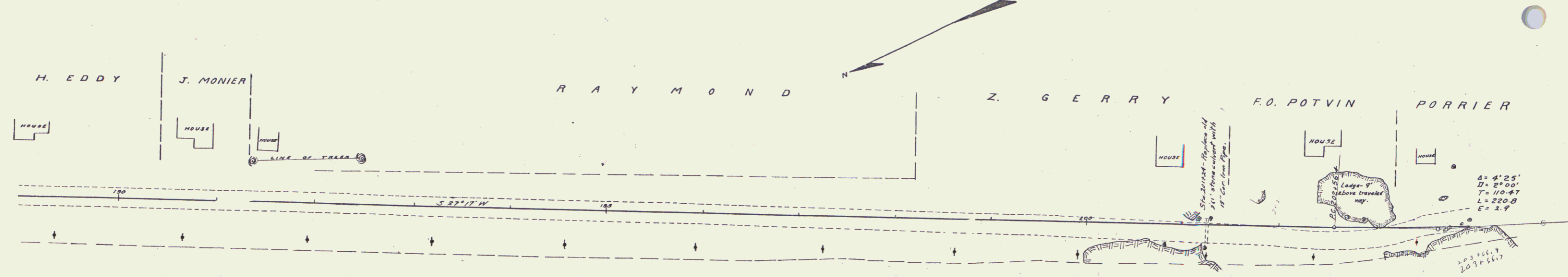
GUARD RAIL REQUIRED ON LEFT
 Sta 130+69 to Sta 202+16 length 352 ft.
ON RIGHT
 Sta 201+12 to Sta 201+35 length 24 ft.
TOTAL THIS SHEET 376 ft.

NEW CULVERTS REQUIRED
 Sta 201+24 18" Cor. Iron Pipe 30 ft.
 1-2' Concrete Handwalk 1.8 m. yds.

FED. ROAD DIST. NO.	STATE	FILE NO.	SHEET NO.	TOTAL SHEETS
5	VT	15	18	23

M.B. Drake
 Supt. of Highways
 State of Vermont
 1919

M.B. Drake
 Supt. of Highways
 State of Vermont
 1919



D.M. N.W. corner of threshold of Monier house. Elev. 183.73
 D.M. N.W. corner of threshold of Z. Gerry house. Elev. 188.62

Series K. No. 15. Road
 Sheet 18 of 23

161