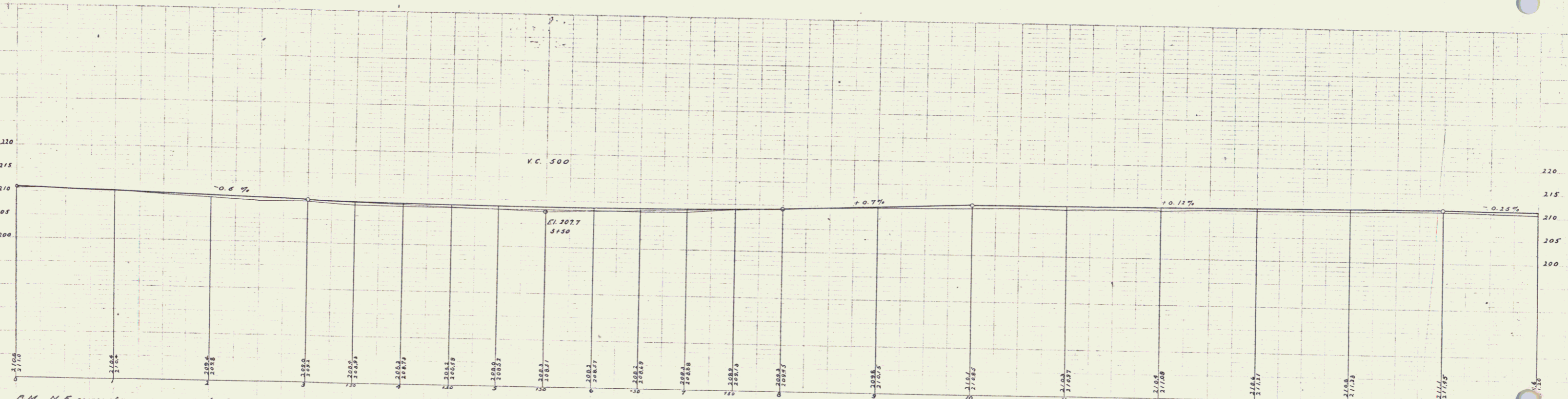
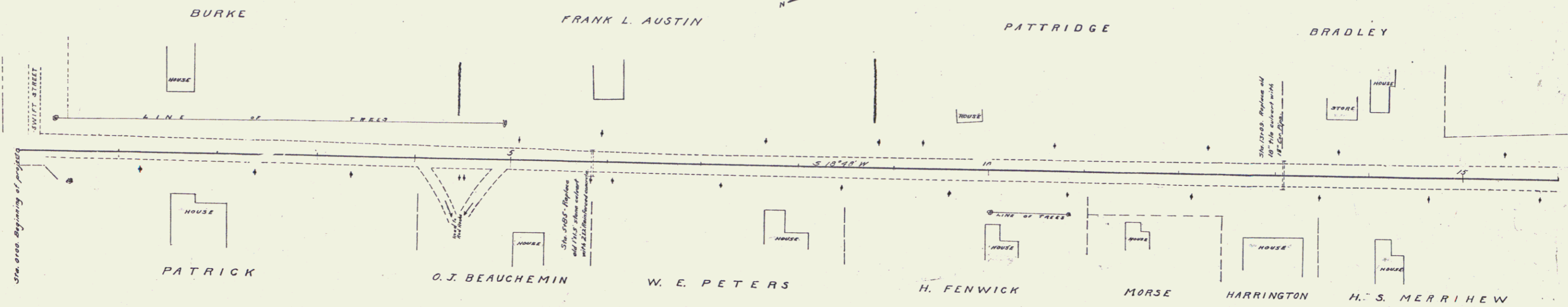


GUARD RAIL REQUIRED
ON LEFT
 Sta. 5+73 to sta. 5+97 length 24 ft.
 - 12+57 - - 13+21 - 24 -
ON RIGHT
 Sta. 5+73 to sta. 5+97 length 24 ft.
 - 12+57 - - 13+21 - 24 -
TOTAL THIS SHEET 96 ft.

NEW CULVERTS REQUIRED
 Sta. 5+85 2x2 Reinforced Concrete 37.8 ft.
 1-2-4 Concrete 4.3 cu. yds.
 1-3-6 " 7.8 " "
 57 cu ft.
 Sta. 13+09 18" Cor. Iron Pipe 34 ft.
 1-2-4 Concrete Headwalls 1.8 cu. yds.

PERSON	DATE	PER. NO.	ISSUED	SHEET	TOTAL
3	11	15	1919	3	22



B.M. N.E. corner of upper concrete step (on Swift St side) of house on the corner of Swift St and Shelburne Road. Elev. 215.69
 B.M. Threshold, North corner of first house, S.W. corner below road to Red Banks. Opposite Sta 57002. Elev. 209.48
 B.M. South edge of water hole in front of Bradley's store. Opp. Sta. 131. Elev. 211.52