

INDEX OF SHEETS

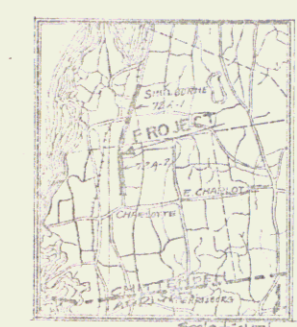
SHEET NO.	TITLE PAGE	STATION
2	TYPICAL CROSS-SECTION OF IMPROVEMENT	516.0 and 516.11
3	PLAN AND PROFILE	STA. 213+00 TO 227+00
4	"	"
5	"	227 00 " 243 00
6	"	243 00 " 259 00
7	"	259 00 " 275 00
8	"	275 00 " 291 00
9	"	291 00 " 306 00
10	"	306 00 " 322 00
11	"	322 00 " 338 00
12	"	338 00 " 354 00
13	"	354 00 " 370 00
14	"	370 00 " 402 00
15	"	402 00 " 418 00
16	"	418 00 " 434 00
17	"	434 00 " 449 00
18	"	449 00 " 464 00
19	"	464 00 " END OF PROJECT
20 TO 21	"	"
21 A	BRIDGE	STA. 222+00
22-34	CROSS-SECTIONS	72A-1
34-43	CROSS-SECTIONS	72A-2

STATE OF VERMONT
STATE HIGHWAY DEPARTMENT

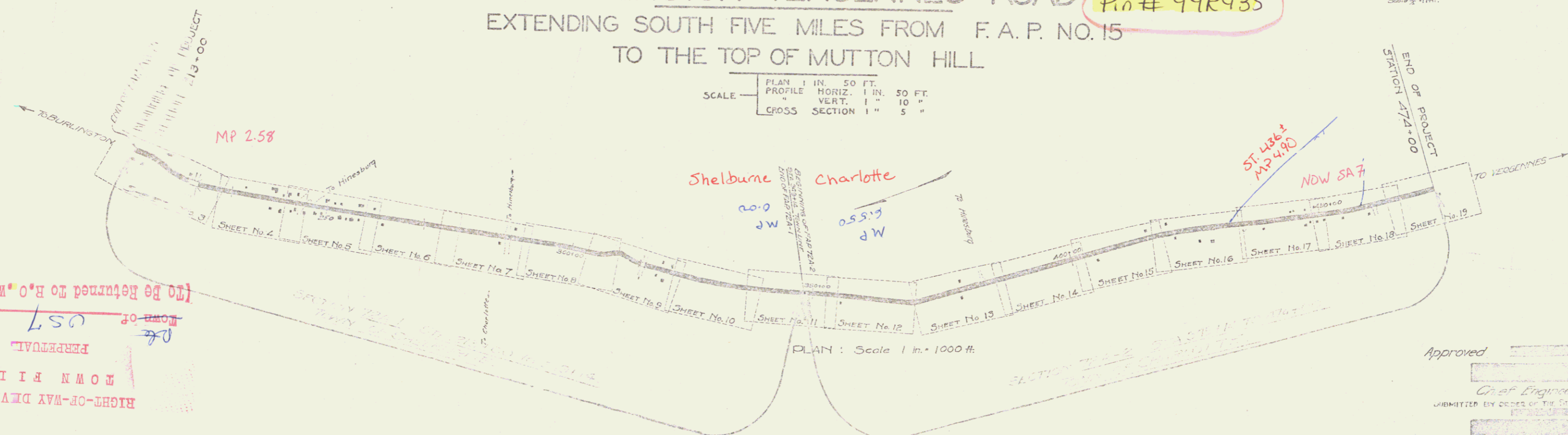
PLAN AND PROFILE OF PROPOSED
STATE HIGHWAY
FEDERAL AID PROJECT

TOWNS OF SHELBURNE-CHARLOTTE
BURLINGTON-VERGENNES ROAD *Pin # 99R435*
EXTENDING SOUTH FIVE MILES FROM F. A. P. NO. 15
TO THE TOP OF MUTTON HILL

PROJECT NO.	STATE	FEDERAL AID PLAN NO.	SCALE	SHEET NO.	TOTAL SHEETS
9	Vt	72A	2534	1	1



SCALE: PLAN 1 IN. = 50 FT.
PROFILE HORIZ. 1 IN. = 50 FT.
VERT. 1" = 10"
CROSS SECTION 1" = 5"



(To Be Returned to H.O.W. Division)
 WORK OF
 US7
 PERMANENT
 OWN FILE
 RIGHT-OF-WAY DIVISION

CONVENTIONAL SIGNS

COUNTY LINE	GROUND ELEVATION	DATE	SCALE
TOWN LINE	GRADE ELEVATION	DATE	SCALE
FENCE LINE			
STONE WALL			
UNFENCED PROPERTY			
GUARD RAIL			
TRAVELED WAY			
RAILROAD			
RETAINING WALL			
CENTER LINE			
SURVEY LINE			

CURVE DATA

DEFLECTION ANGLE	Δ
DEGREE OF CURVE	D.
RADIUS OF CURVE	R.
TANGENT DISTANCE	T.
LENGTH OF CURVE	L.
EXTERNAL DISTANCE	E.
POINT OF INTERSECTION	P.I.
POINT OF CURVE	P.C.
POINT OF TANGENT	P.T.

Approved: _____
 Chief Engineer
 SUBMITTED BY ORDER OF THE STATE HIGHWAY BOARD
 Commissioner of Highways

Rte U.S. 7

RECOMMENDED: _____
 DISTRICT ENGINEER
 BUREAU OF PUBLIC ROADS
 RECOMMENDED FOR APPROVAL: _____
 CHIEF ENGINEER - PUBLIC ROADS
 APPROVED: _____
 DISTRICT ENGINEER - BUREAU OF PUBLIC ROADS

1/1/24

project No: F 72A

SHEET NO. 1 OF 1
 DIST. # 5 PLANS

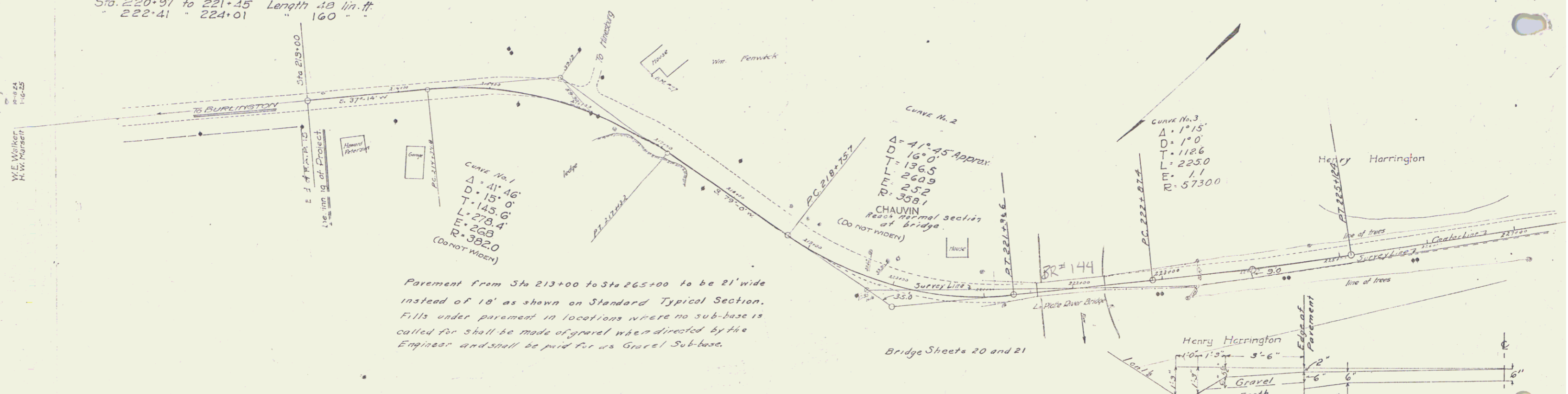
CABLE GUARD RAIL REQUIRED
 ON LEFT
 Sta. 220+97 to 221+45 Length 48 lin. ft.
 " 222+41 " 224+01 " 160 " "

ON RIGHT
 Sta. 220+97 to 221+45 Length 48 lin. ft.
 " 222+41 " 224+01 " 160 " "

9" SUB - BASE OF FIELD OR QUARRYSTONE
 Sta. 213+00 to 221+45 Length 845'

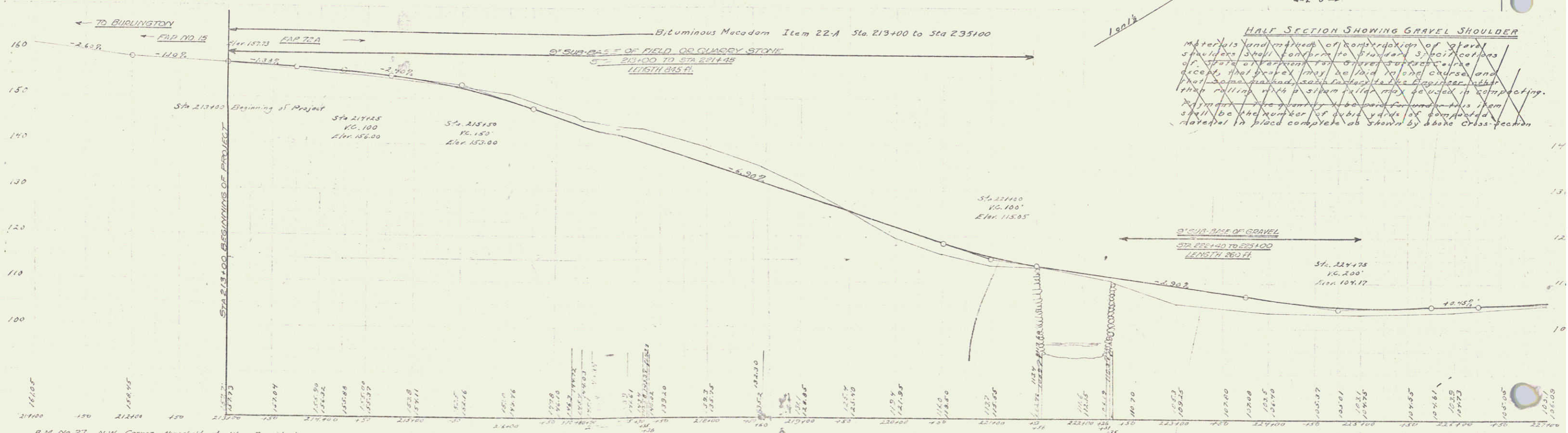
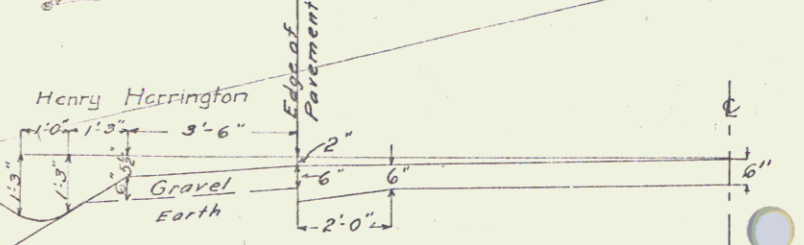
9" SUB - BASE OF GRAVEL REQUIRED
 Sta. 221+40 to 225+00 Length 260'

PLANNING AND DESIGN
 1921
 1 222 23 27 3 34



Parapet from Sta 213+00 to Sta 265+00 to be 21' wide instead of 18' as shown on Standard Typical Section. Fills under parapet in locations where no sub-base is called for shall be made of gravel when directed by the Engineer and shall be paid for as Gravel Sub-base.

Bridge Sheets 20 and 21



Q.M. No. 27 N.W. Corner threshold of Wm. Fenwick house Elev. 151.83
 Q.M. No. 29 Top of last quarter rail post S. of bridge W. side of road Elev. 108.12

Series F Hoisted
 Sheet 1 of 34

WOOD GUARD RAIL REQUIRED
ON LEFT
Sta. 234+88 to 235+12 Length 24' lin. ft.
ON RIGHT
Sta. 234+88 to 235+12 Length 24' lin. ft.

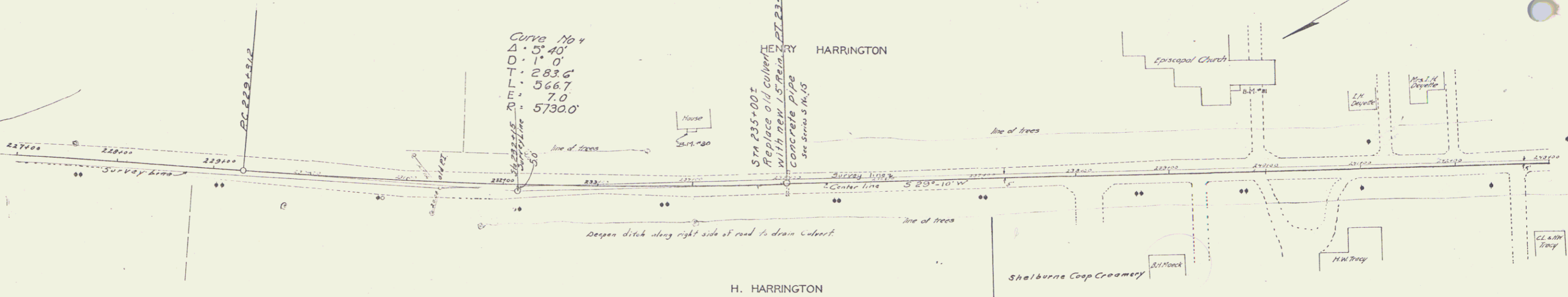
NEW CULVERTS REQUIRED
Sta. 235+00± 15" Rein Concrete Pipe Length 367.7
1-2 1/2" - 5 Concrete
Reinforcing Steel 33 lbs

6" SUB-BASE OF GRAVEL
Sta. 239+00 to 243+00 Length 500'
9" SUB-BASE OF GRAVEL
Sta. 228+00 to 231+00 Length 300'

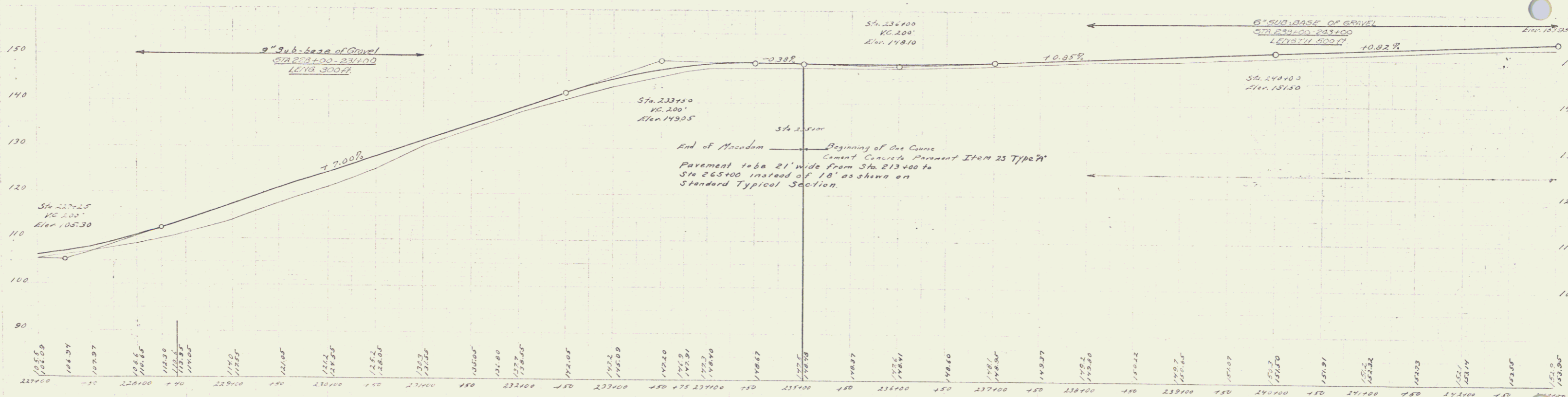
Curve No. 4
Δ = 5° 40'
D = 1° 0'
L = 283.6'
T = 566.7'
R = 7.0'
E = 5730.0'

HEMERY HARRINGTON
Replace old culvert
with new 15" REIN
CONCRETE PIPE
see Specs 3 1/4, 15

K.C. McCreath
1885



2 1/2" Sub-base of Gravel
Sta. 228+00-231+00
Length 300 ft



Sta. 233+50
VC 200'
Elev. 143.05

Sta. 233+00
VC 200'
Elev. 148.10

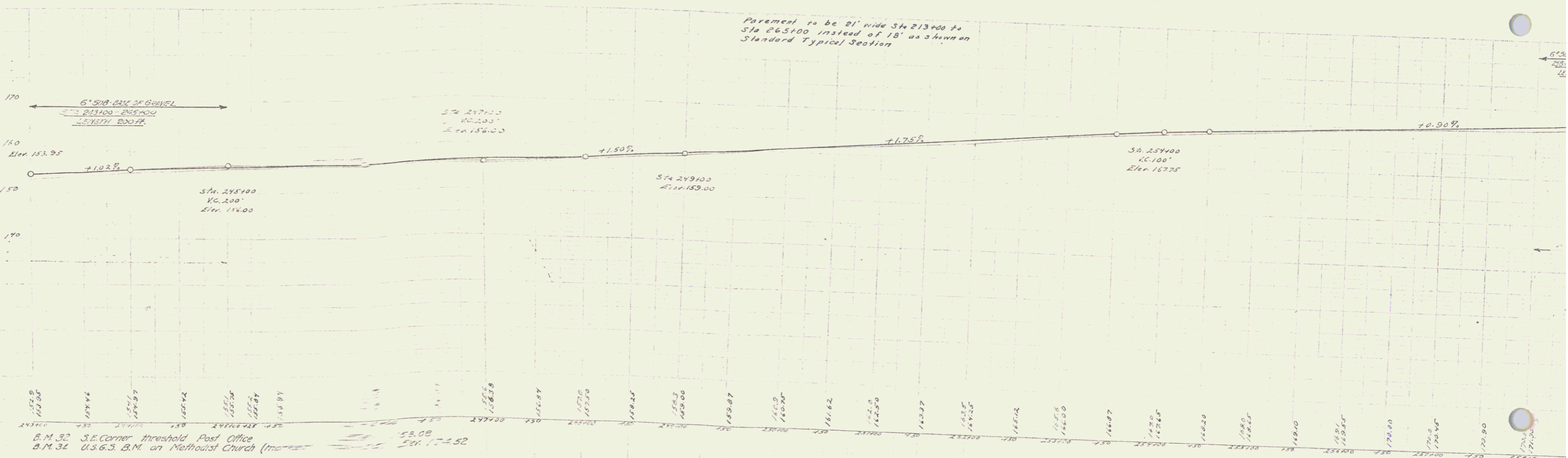
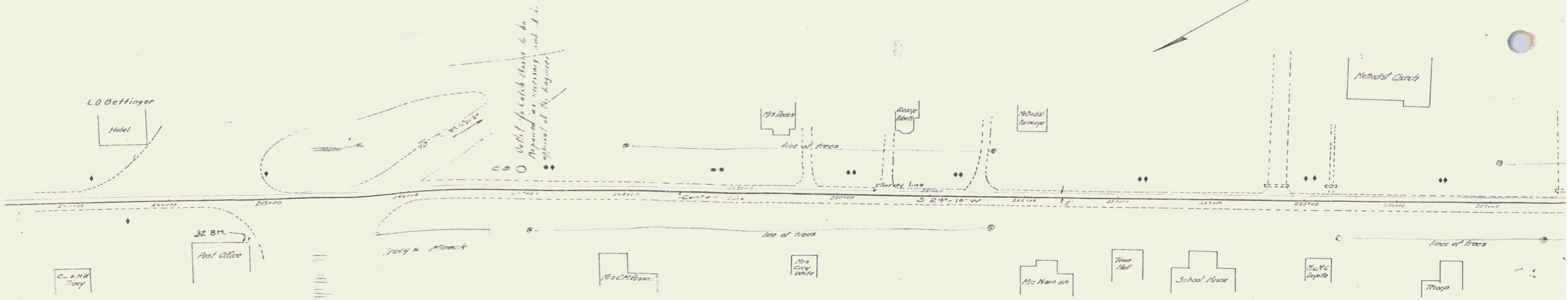
End of Macadam
Beginning of One Course
Cement Concrete Pavement 12" x 25 Type "A"
Pavement 10'6" wide from Sta. 213+00 to
Sta. 235+00 instead of 10' as shown on
Standard Typical Section.

B.M. No. 30 N.W. Corner top step of H. Harrington house Elev. 148.63
B.M. No. 31 S.W. Episcopal Church Elev. 152.15

WOODEN GUARD RAIL REQUIRED
ON LEFT.
Sta. 257+00 to Sta. 258+12 Length 24 FT
ON RIGHT
Sta. 257+00 to Sta. 258+12 Length 24 FT

SUB-BASE OF ROWE
Sta. 253+00 to Sta. 255+00 Length 200'

NEW CULVERTS REQUIRED
Sta. 258+00: 18" Reinforced Concrete Pipe Length 32 ft.
1-2 1/2 Concrete 2.7 Cu yds.
Reinforcing Steel 33 Lbs.



B.M. 32 S.E. Corner threshold Post Office
B.M. 34 U.S.G.S. B.M. on Methodist Church (Imaginary)
58.08
Elev. 172.52

WOOD GUARD RAIL REQUIRED
 ON LEFT
 Sta. 265+88 to 266+12 Length 24 lin. ft.
 ON RIGHT
 Sta. 265+88 to 266+12 Length 24 lin. ft.

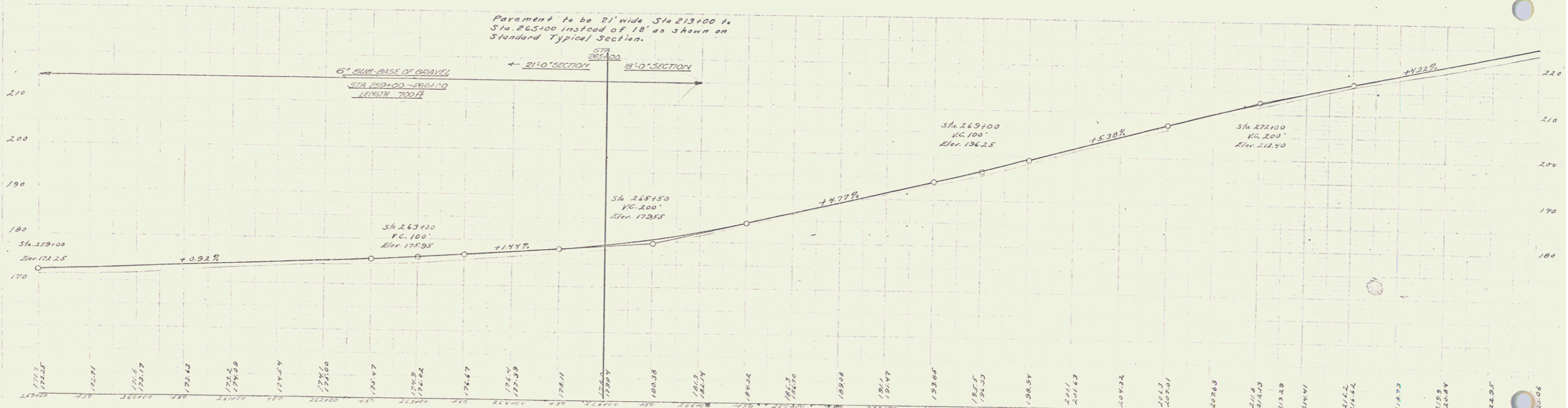
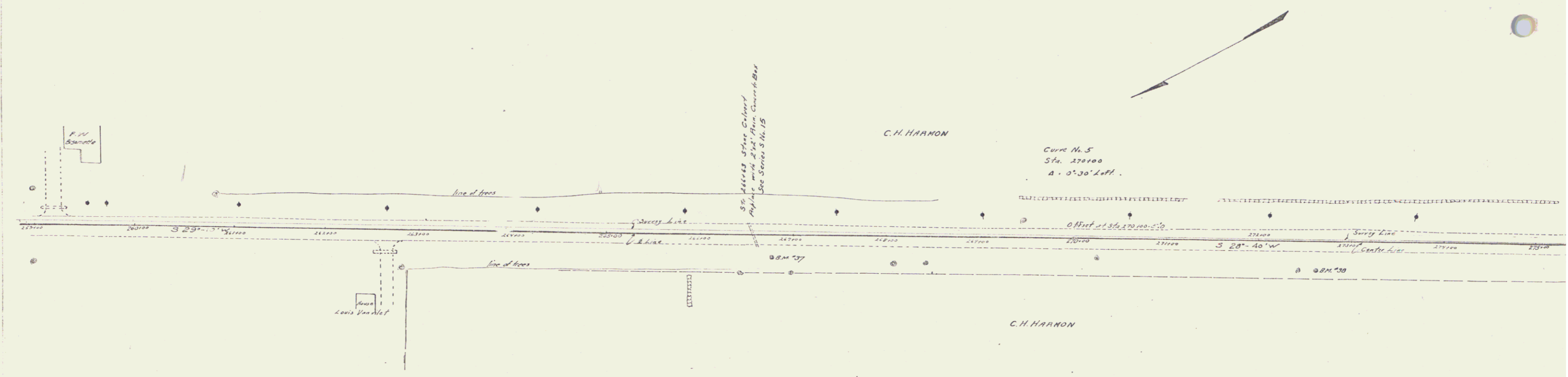
NEW CURBS REQUIRED 10' P
 Sta. 266+63 2x2 Box
 1-2-4 Concrete 10.5 cu. yd.
 Reinforcing Steel 683.0 lbs. 683.

6" SUB-BASE
 Sta. 259+00 to 266+00 Length 700'

724 23-24 G 34

W.E. Miller
 P.E. Roadway
 1-2-25

B.M. Howard
 P.E. Roadway
 1-2-25



B.M. 35 N.W. Corner Steeping stone of F.W. Bissonette Sta. 259+50 Elev. 172.36
 B.M. 37 Spike in 16' elm 30' right of Sta. 266+72 Elev. 186.49
 B.M. 38 " " 14' " 34' left " 272+62 Elev. 215.02

Series F No. 72 Filed
 Sheet 6 of 34

5

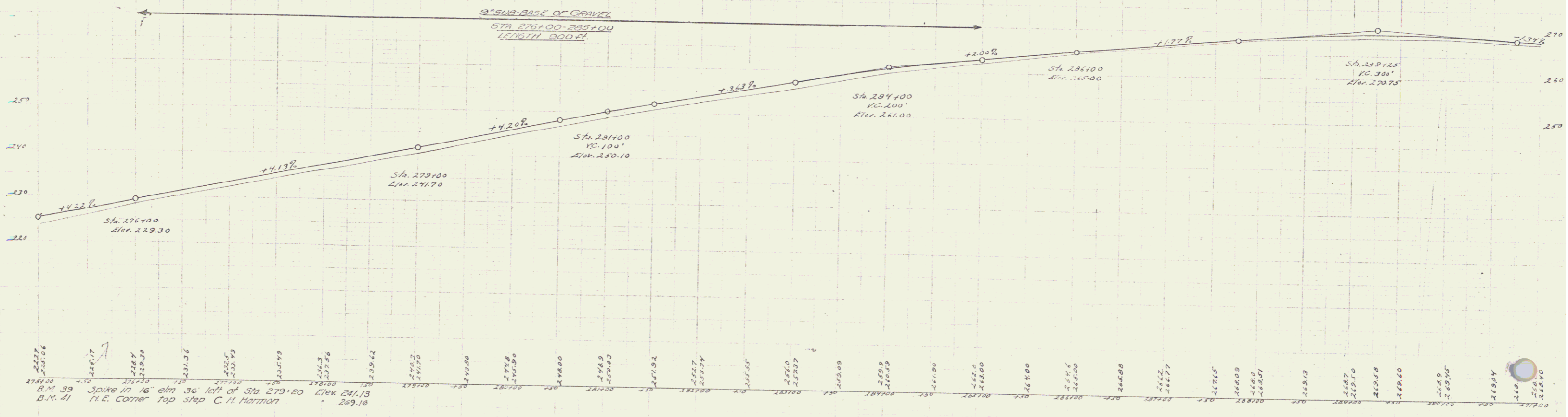
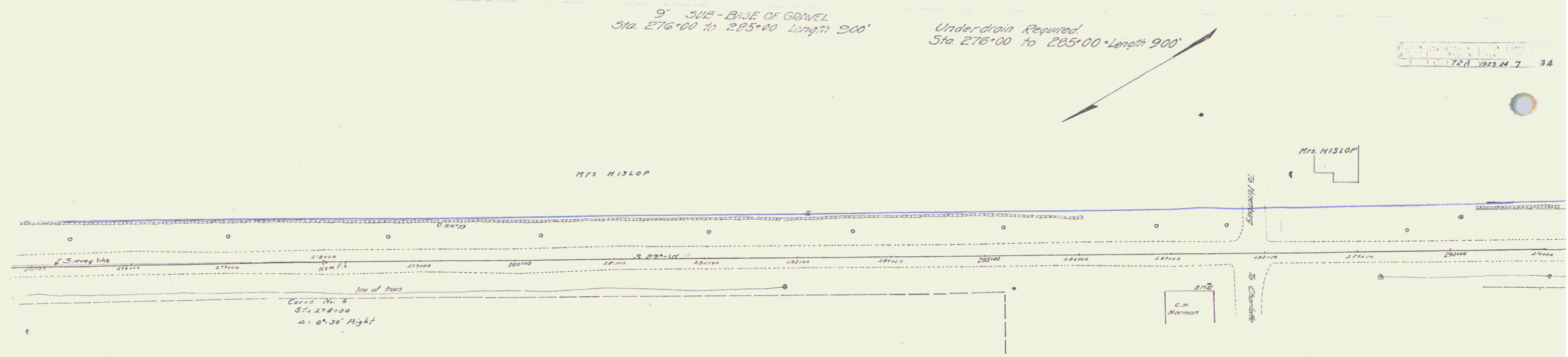
9" SUB-BASE OF GRAVEL
Sta. 276+00 to 285+00 Length 900'

Underdrain Required
Sta. 276+00 to 285+00 Length 900'

Series N. 72A
Sheet 34

W.E. Walker
1-31-18

D.W. Hayward
1-31-18



276+00	276+10	276+20	276+30	276+40	276+50	276+60	276+70	276+80	276+90	277+00	277+10	277+20	277+30	277+40	277+50	277+60	277+70	277+80	277+90	278+00	278+10	278+20	278+30	278+40	278+50	278+60	278+70	278+80	278+90	279+00	279+10	279+20	279+30	279+40	279+50	279+60	279+70	279+80	279+90	280+00	280+10	280+20	280+30	280+40	280+50	280+60	280+70	280+80	280+90	281+00	281+10	281+20	281+30	281+40	281+50	281+60	281+70	281+80	281+90	282+00	282+10	282+20	282+30	282+40	282+50	282+60	282+70	282+80	282+90	283+00	283+10	283+20	283+30	283+40	283+50	283+60	283+70	283+80	283+90	284+00	284+10	284+20	284+30	284+40	284+50	284+60	284+70	284+80	284+90	285+00
--------	--------	--------	--------	--------	--------	--------	--------	--------	--------	--------	--------	--------	--------	--------	--------	--------	--------	--------	--------	--------	--------	--------	--------	--------	--------	--------	--------	--------	--------	--------	--------	--------	--------	--------	--------	--------	--------	--------	--------	--------	--------	--------	--------	--------	--------	--------	--------	--------	--------	--------	--------	--------	--------	--------	--------	--------	--------	--------	--------	--------	--------	--------	--------	--------	--------	--------	--------	--------	--------	--------	--------	--------	--------	--------	--------	--------	--------	--------	--------	--------	--------	--------	--------	--------	--------	--------	--------	--------	--------	--------

B.M. 39 Spike in 16' elm 30' left of Sta. 279+20 Elev. 241.13
B.M. 41 N.E. Corner Top step C.H. Harman Elev. 269.16

Series N. 72A
Sheet 34

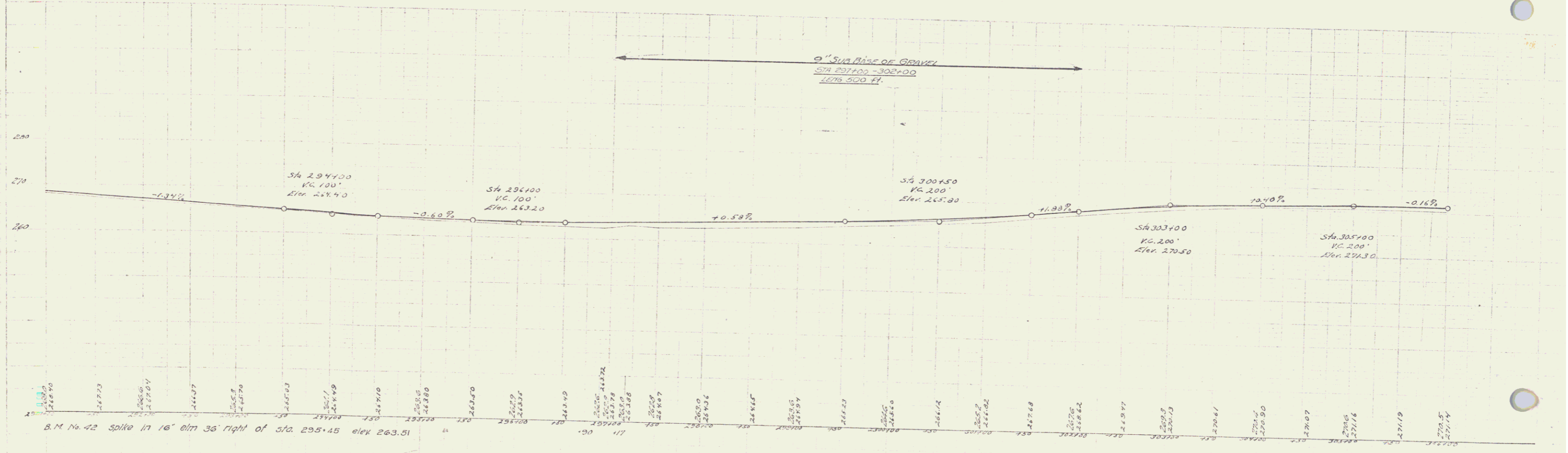
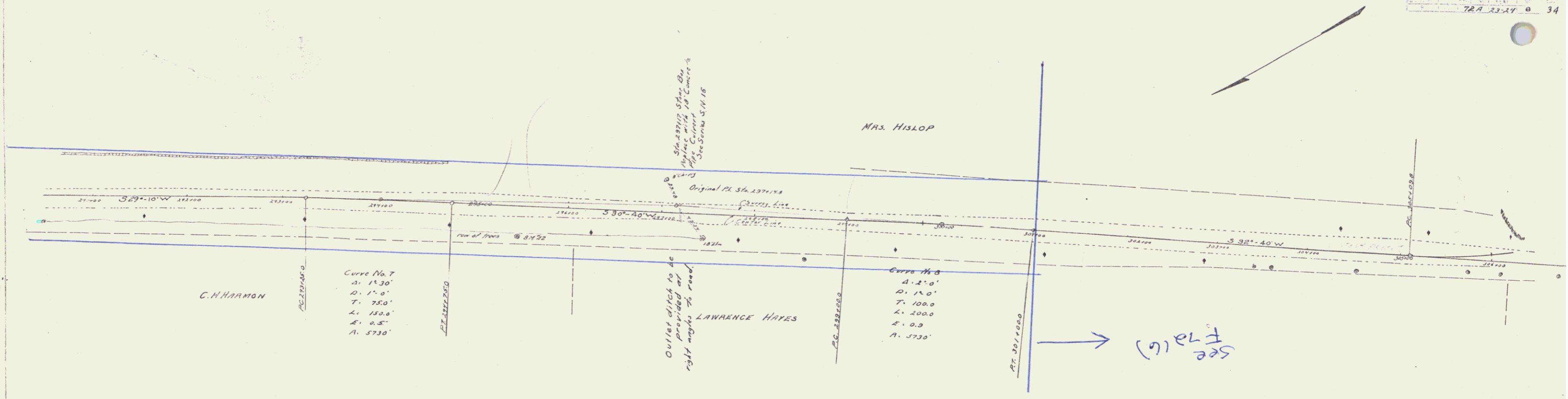
6

WOOD CURVED RAIL REQUIRED
 ON LEFT
 Sta. 297+05 to 297+29 length 24 lin. ft.
 ON RIGHT
 Sta. 297+05 to 297+29 length 24 lin. ft.

NEW CURVES REQUIRED
 Sta. 297+17 18" Box Concrete Pipe Length 32 ft
 1'-2'-5" Concrete
 Reinforcing Steel 33 lbs

9" SUB - BASE OF GRAVEL
 Sta. 297+00 To 302+00 Length 500'

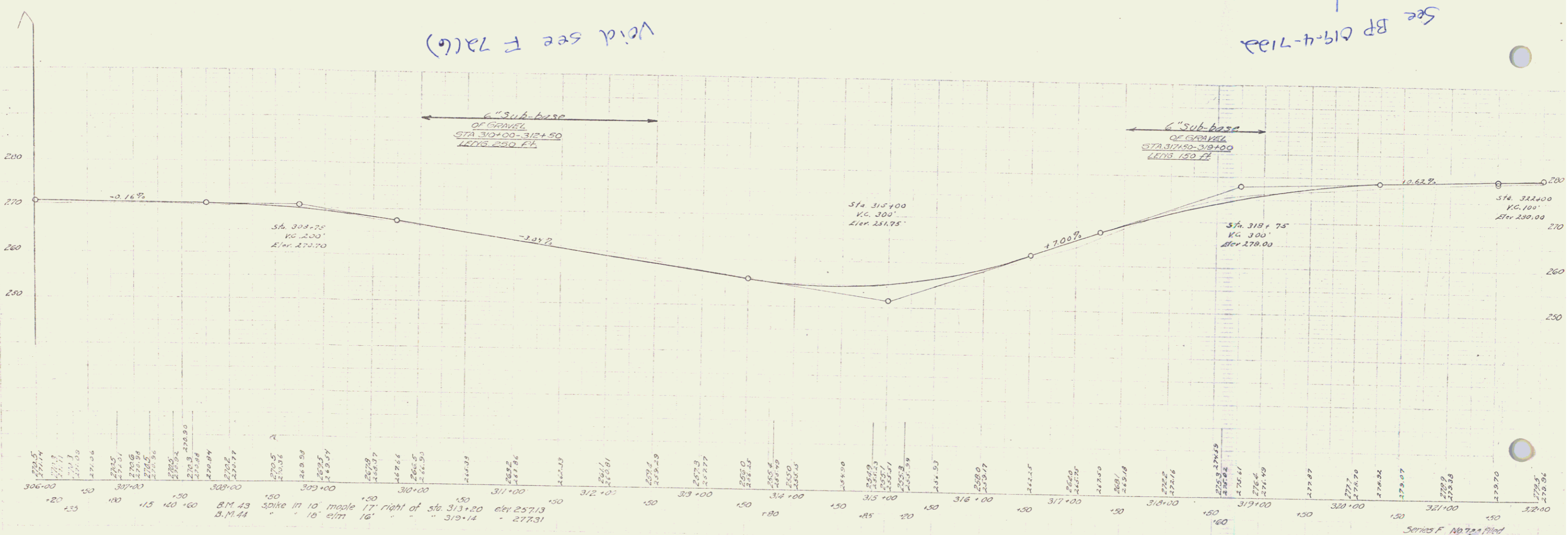
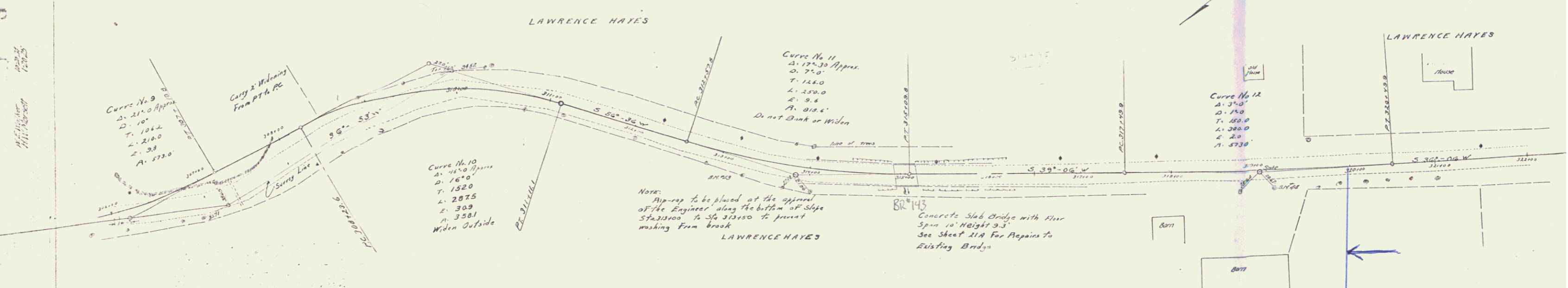
NO. 1000
 727 23-24 34



CABLE GUARD RAIL REQUIRED
 ON LEFT
 Sta. 313+82 to 314+96 length 112 lin. ft.
 " 315+15 " 316+03 " 88 " "
 ON RIGHT
 Sta. 313+96 to 314+96 length 600 lin. ft.
 " 315+15 " 317+23 " 208 " "

6" SUB-BASE OF GRAVEL
 Sta. 310+00 to 312+50 Length 250'
 Sta 317+50 to 319+00 " 150'

UNDERDRAIN
 Sta. 309+00 to 314+00 Length 500'



Void see F 7a(c)

See BP 619-4-71a

WOOD GUARD RAIL REQUIRED

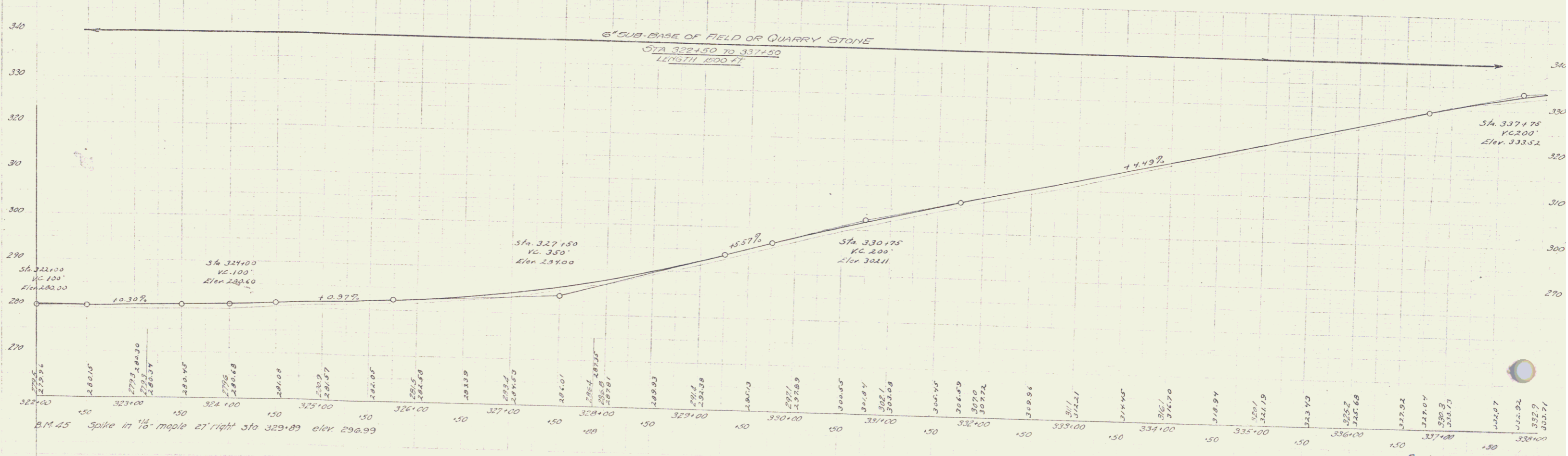
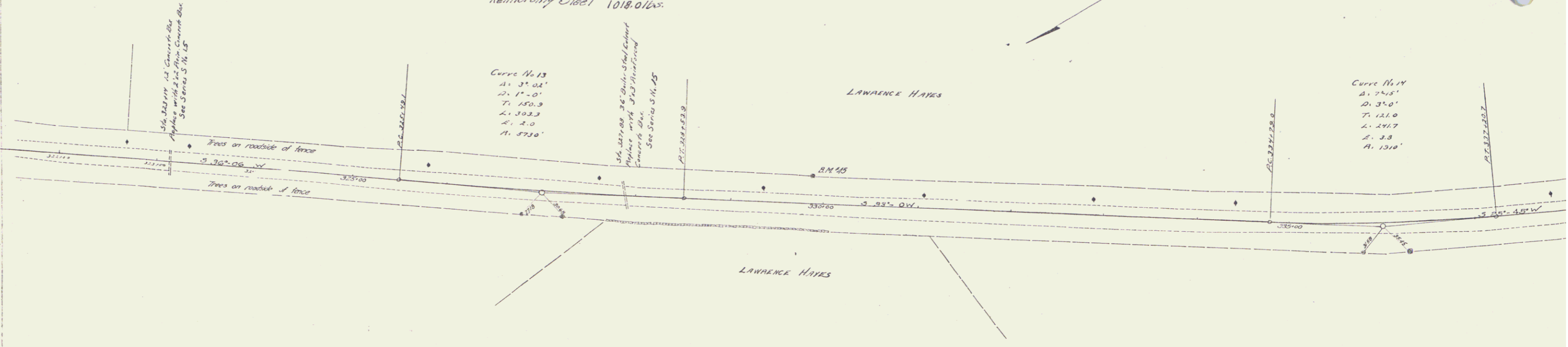
ON LEFT
Sta 323+02 to 323+26 length 24 ft.
" 327+76 " 328+00 " 24 "

ON RIGHT
Sta 323+02 to 323+26 length 24 ft.
" 327+76 " 328+00 " 24 "

NEW CULVERTS REQUIRED

Sta 323+14 2x2' Box
1-2-4 Concrete 10.8 cu. yd.
Sta 327+88 3x3' Box
1-2-4 Concrete 15.7 cu. yd.
Reinforcing Steel 1018.0 lbs.

6" SUB-BASE OF FIELD OR QUARRY STONE
Sta. 322+50 to 337+50 Length 1500'



Checked
 Approved
 Date
 12/15/26

9

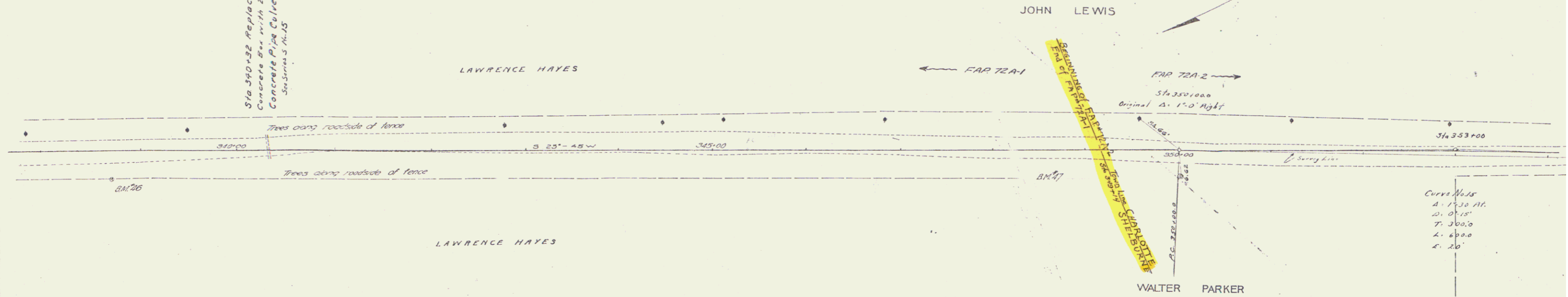
WOOD GUARD RAIL REQUIRED
 ON LEFT
 Sta. 340+20 to 340+44 length 24 lin. ft.
 ON RIGHT
 Sta. 340+20 to 340+44 length 24 lin. ft.

NEW CULVERTS REQUIRED
 Sta. 340+32 24" Rein. Concrete Pipe Length 32 ft.
 1,2-4" concrete 2.6 cu. yd.
 Reinforcing Steel 35 lbs

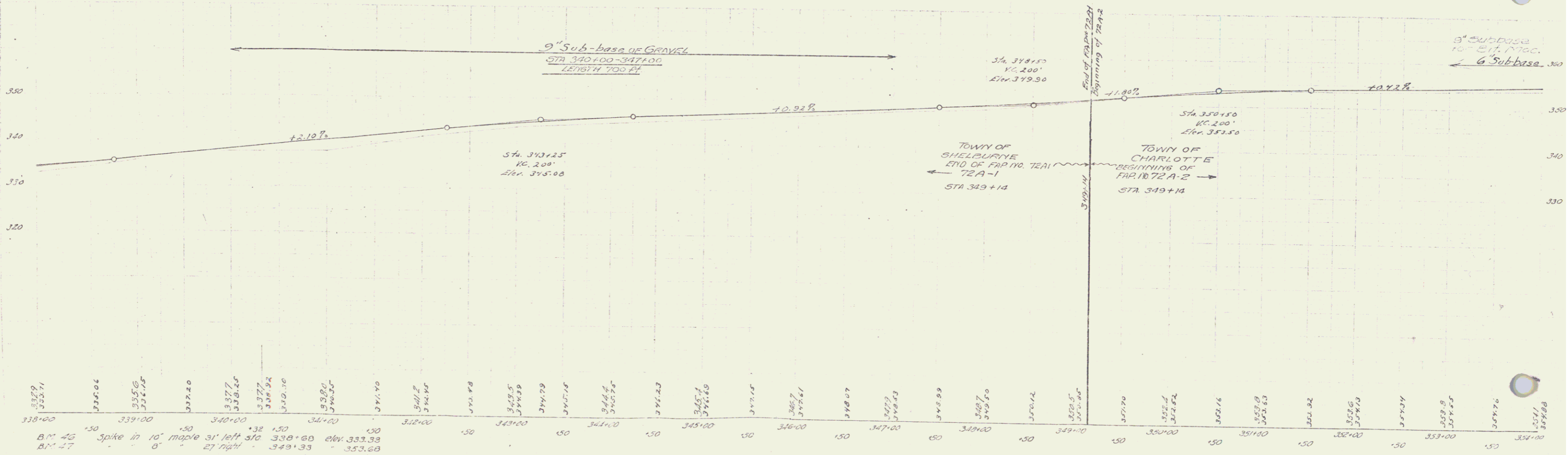
9" SUB-BASE OF GRAVEL
 Sta. 340+00 to 347+00 Length 700'
 6" SUB-BASE OF GRAVEL
 Sta. 353+00 to 354+00 100'

Sta. 340+22 Replace 12" x 12" Concrete Box with 24" Rein. Concrete Pipe Culvert
 Sta. 340+35 M-15

72A 1922 11 34



Curve Data
 1. 150 ft.
 2. 0' 15"
 3. 300.0
 4. 600.0
 5. 20'



332.9
 333.1
 335.06
 335.6
 337.26
 337.7
 338.25
 339.26
 339.8
 340.2
 341.2
 342.2
 343.2
 344.2
 345.2
 346.2
 347.2
 348.2
 349.2
 350.2
 351.2
 352.2
 353.2
 354.2
 355.2
 356.2
 357.2
 358.2
 359.2
 360.2
 361.2
 362.2
 363.2
 364.2
 365.2
 366.2
 367.2
 368.2
 369.2
 370.2

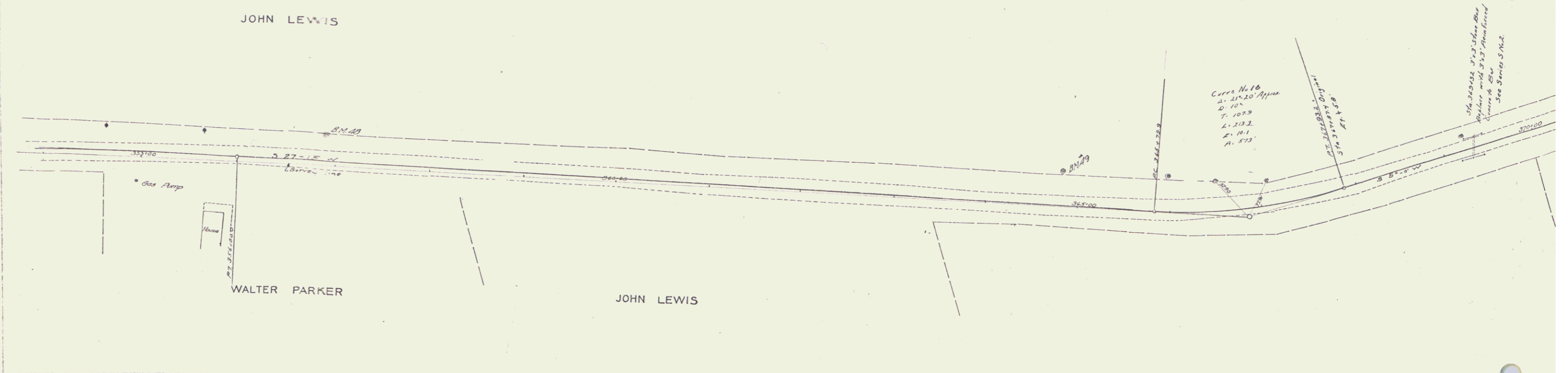
GUARD RAIL REQUIRED
ON LEFT
Sta. 369+20 to 369+44 length 24' - 4"
ON RIGHT
Sta. 369+20 to 369+44 length 24' - 4"

NEW CULVERTS REQUIRED
Sta. 369+32 3' x 3' Box
1-2-4 Concrete 3.4 cu yd.
1-2-5 " 11.2 " "
Reinforcing Steel 182.0 lbs.

6" SUB-BASE
Sta. 354+00 to 364+00 Length 100'
" 369+50 " 370+00 "
* 9" for Bituminous Macadam

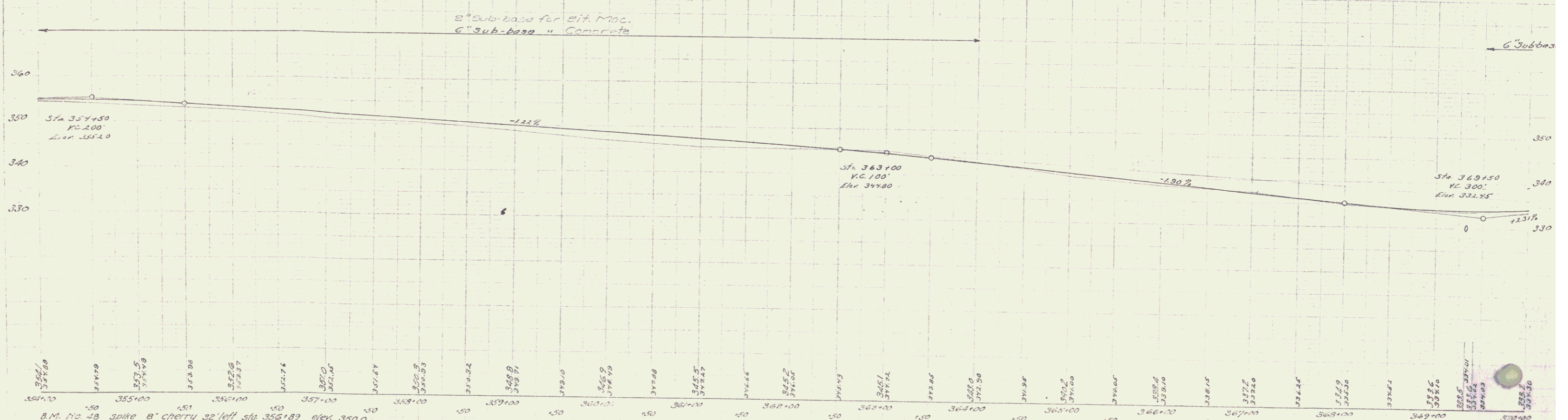
UNDERDRAIN
Sta. 369+00 to 370+00 Length 100'

22.8 23.27 12 4.3



Curve No 16
R. 21'-20' Approx
D. 10°
T. 102.9
L. 213.2
A. 57.3

Sta. 369+00 to 370+00
Underdrain
See Series 574.2



364+00	364+20	364+40	364+60	364+80	365+00	365+20	365+40	365+60	365+80	366+00	366+20	366+40	366+60	366+80	367+00	367+20	367+40	367+60	367+80	368+00	368+20	368+40	368+60	368+80	369+00	369+20	369+40	369+60	369+80	370+00
352.0	352.0	352.0	352.0	352.0	352.0	352.0	352.0	352.0	352.0	352.0	352.0	352.0	352.0	352.0	352.0	352.0	352.0	352.0	352.0	352.0	352.0	352.0	352.0	352.0	352.0	352.0	352.0	352.0	352.0	352.0

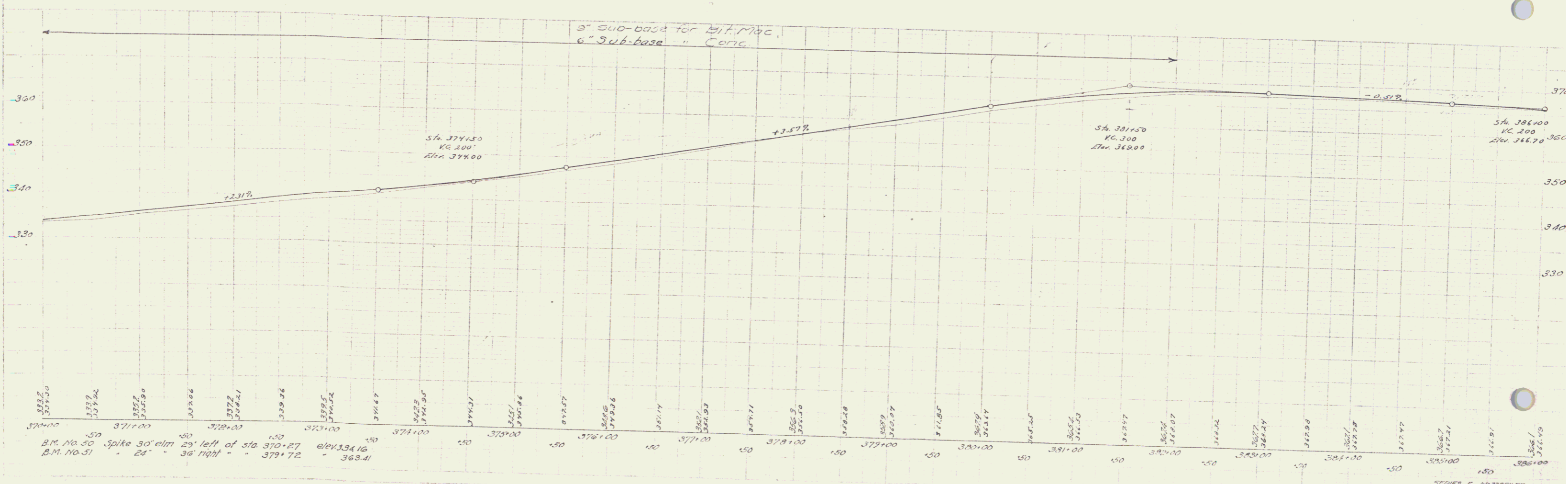
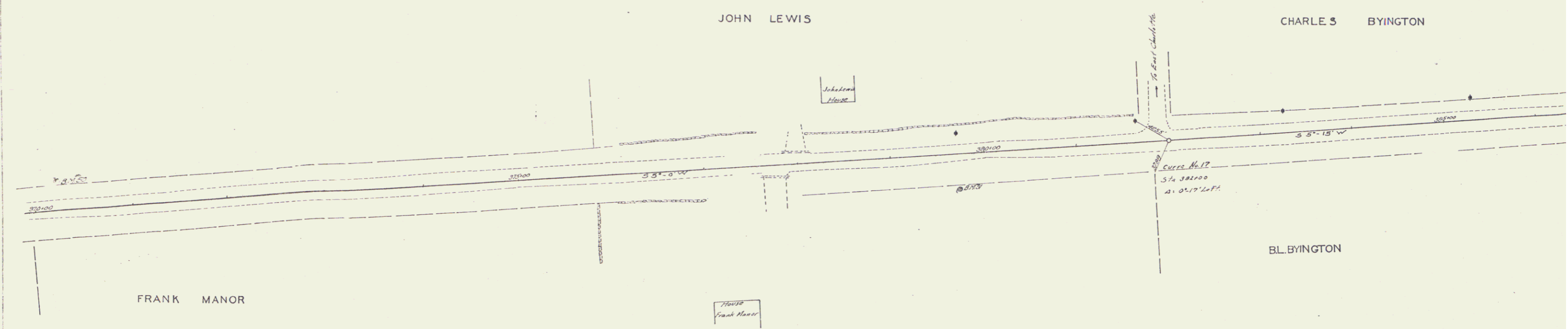
B.M. No 48 spike 8" cherry 32' left sta. 356+89 elev. 350.0
B.M. No 49 " 16" elm 36' " " 364+83 " 343.24

SERIES P. UNPAID
SHEET 12 of 13

6" SUB-BASE Sta. 370+00 to 382+00 Length 1200'
 * 9" For Bituminous Macadam

UNDERDRAIN ON RIGHT Sta. 370+00 to 390+00 Length 1000'

NO. 123456
 DATE 12-24-19 42



SERIES F CHAMBERLAIN
 SHEET 12 OF 40

12

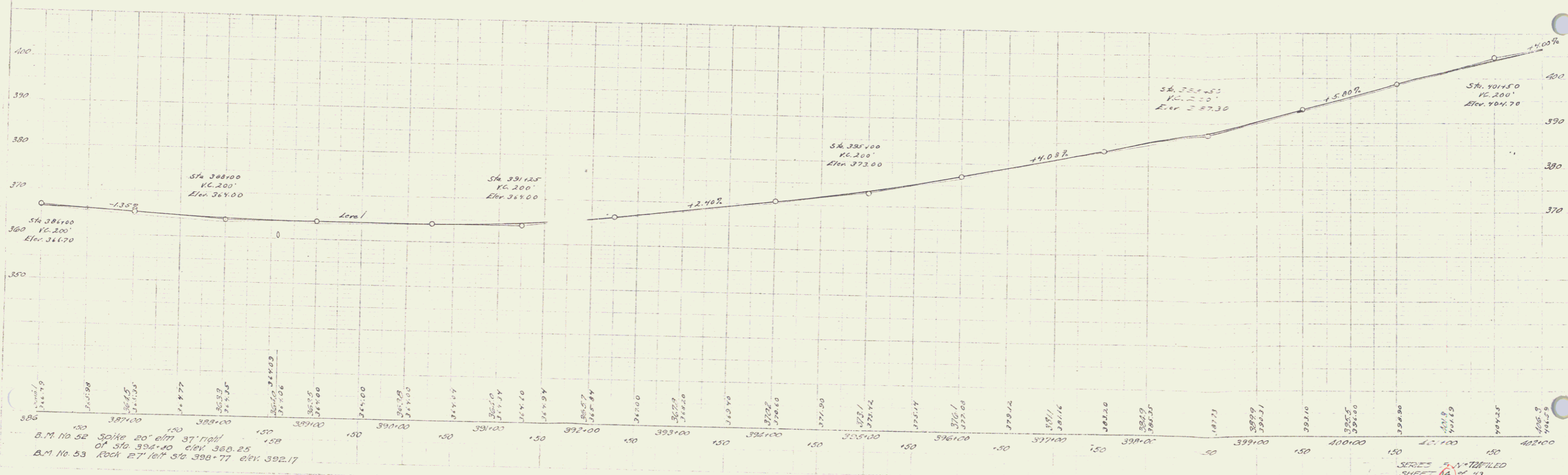
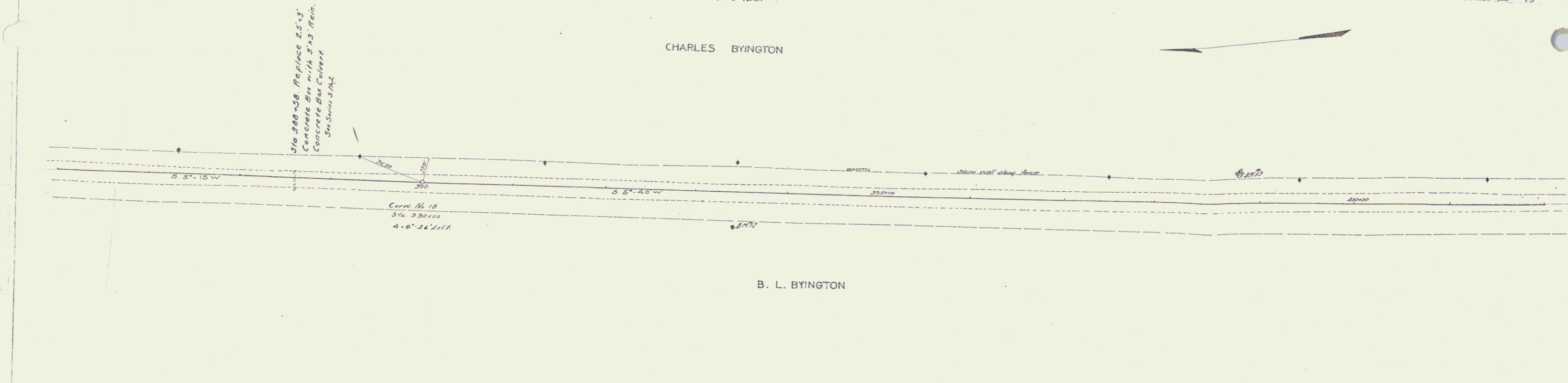
GUARD RAIL REQUIRED
ON LEFT
Sta. 388+46 to 388+70 length 24 lin. ft.
ON RIGHT
Sta. 388+46 to 388+70 length 24 lin. ft.

NEW CULVERTS REQUIRED
Sta. 388+58 3'-0" x 3'-0" Reinforced box 3.7 cu. yd.
1-2-4 Concrete 12.1 " "
1-2-5 " " " "
Reinforcing Steel 190 lbs.

DATE: 7.27.12
SHEET: 12 OF 43

CHARLES BYINGTON

B. L. BYINGTON



B.M. No. 52 Spike 20' elm 37' high
of sta 392+40 elev 360.25
B.M. No. 53 Rock 27' left sta 388+77 elev 392.17

SHEET 12 OF 43

13

9" SUB-BASE
Sta. 416+00 to 418+00 Length 200'

DATE	BY	CHECKED	DATE
7-27	7-27	7-27	7-27

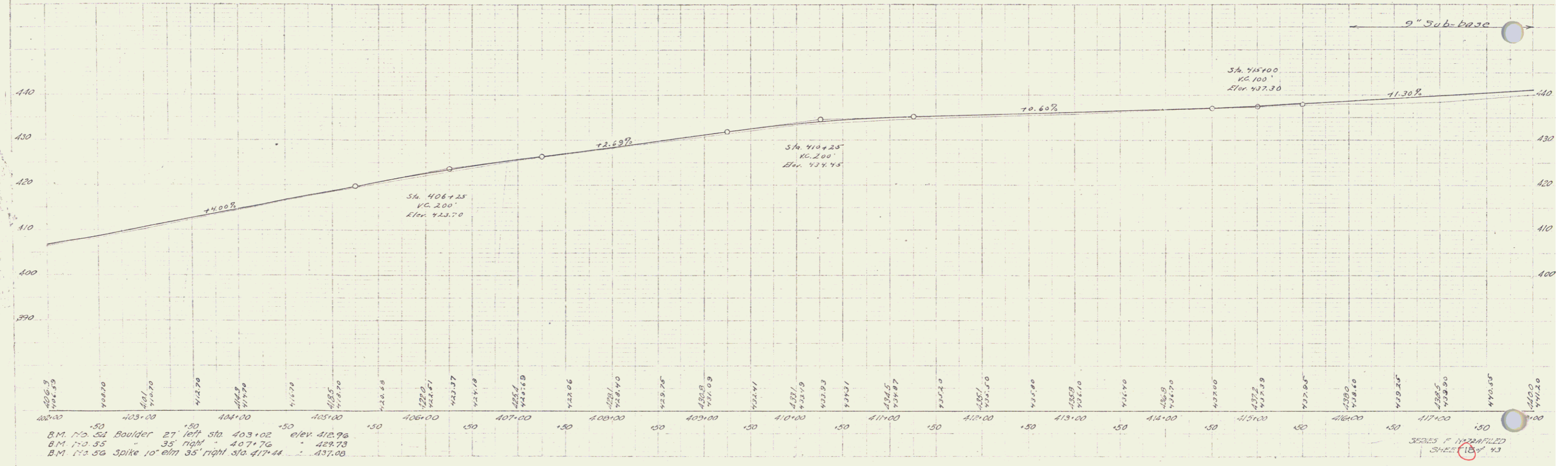
CHARLES BYINGTON



Note: Ditch on both sides of road
Sta. 409+00 - 415+00 as shown on
Cross Sections

Curve No. 19
Sta. 408+00
R. 0'-36" Right

B. L. BYINGTON



B.M. 120.51 Boulder 27' left Sta. 403+02 Elev. 412.98
B.M. 120.55 " 35' right " 407+76 " 429.73
B.M. 122.56 Spike 10' elm 35' right Sta. 417+44 " 437.00

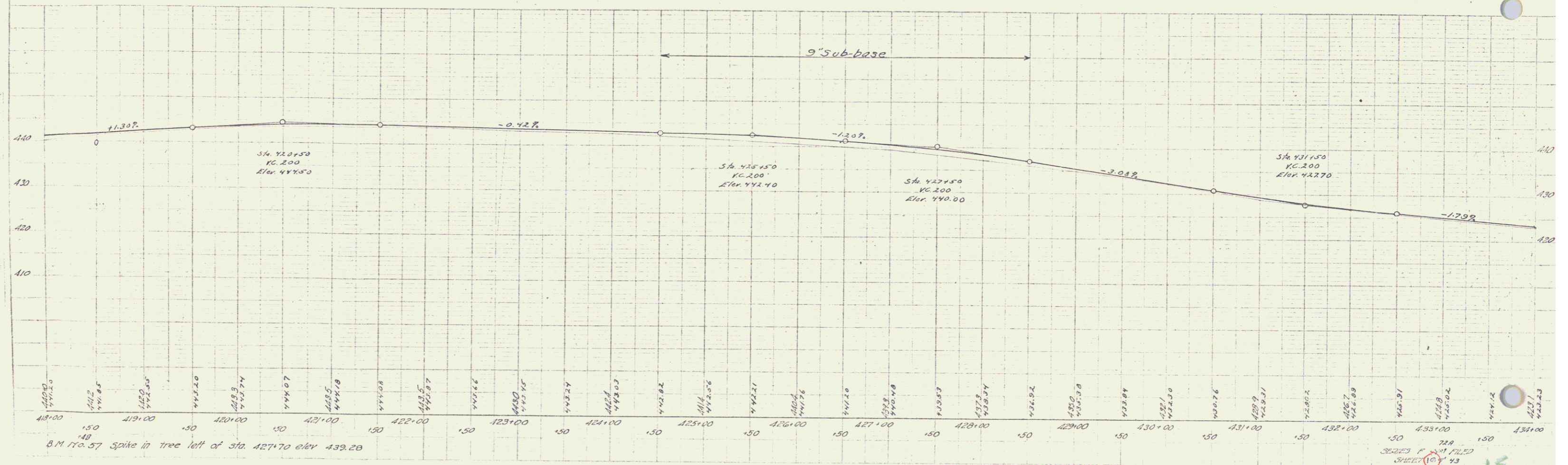
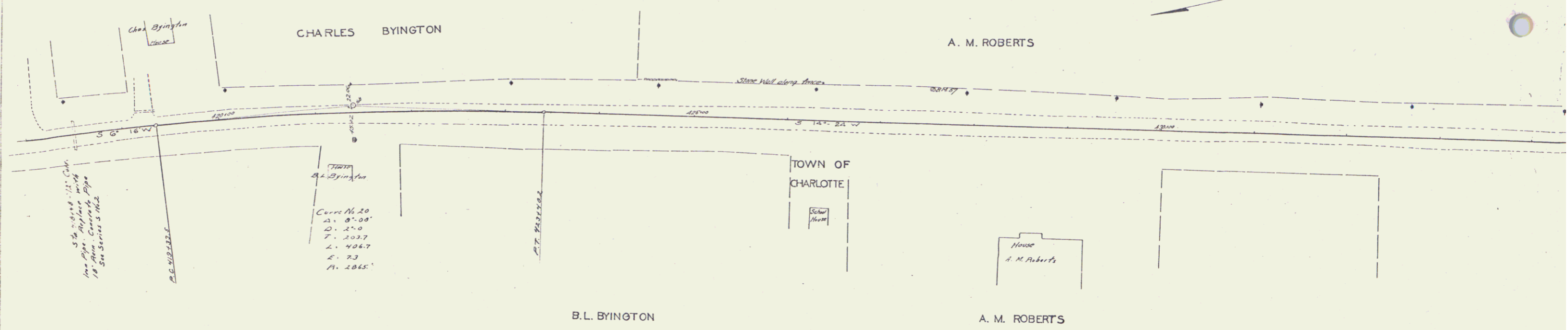
SEALS IF NECESSARY
SHEET 18 OF 43

GUARD RAIL REQUIRED
ON LEFT
Sta. 418+36 to 418+60 length 24 lin. ft.
ON RIGHT
Sta. 418+36 to 418+60 length 24 lin. ft.

NEW CULVERTS REQUIRED
Sta. 418+48 18" Rein. Concrete Pipe length 32' Ft.
1-2.5 Concrete 2.3 cu yd.

3" SUB-BASE
Sta. 424+50 to 428+50 Length 400'

DATE: 12-27-16
SCALE: 1" = 40'
SHEET: 10 OF 43



1/2" = 40'
 1/4" = 20'
 1/8" = 10'
 1/16" = 5'
 1/32" = 2.5'
 1/64" = 1.25'

1/2" = 40'
 1/4" = 20'
 1/8" = 10'
 1/16" = 5'
 1/32" = 2.5'
 1/64" = 1.25'

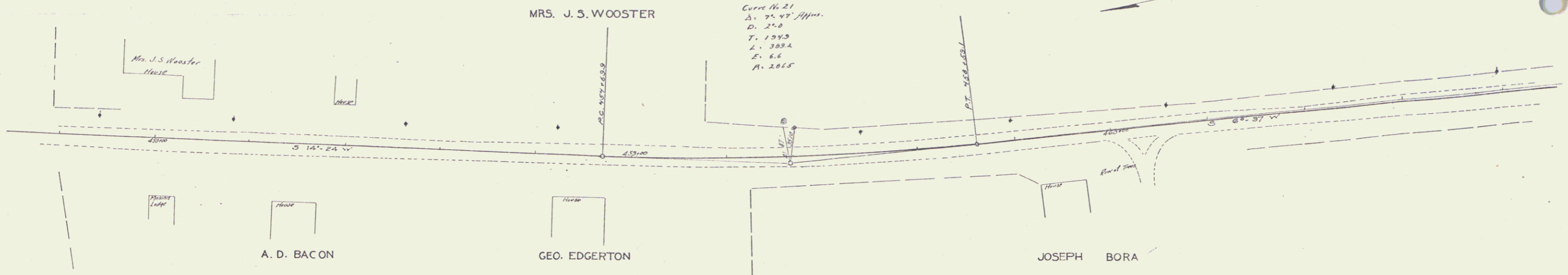
B.M. 170.37 Spike in tree left of sta. 427+70 elev. 439.28

72A
SERIES FILED
SHEET 10 OF 43

15

9" SUB-BASE
Sta. 452+00 to 454+00 Length 200'

RECORD BOOK NO. 334 21-27 16 43



Curve No. 21
Δ = 97.45' H.M.S.
D. 27.0
T. 1943
L. 389.2
E. 6.6
A. 2065

