

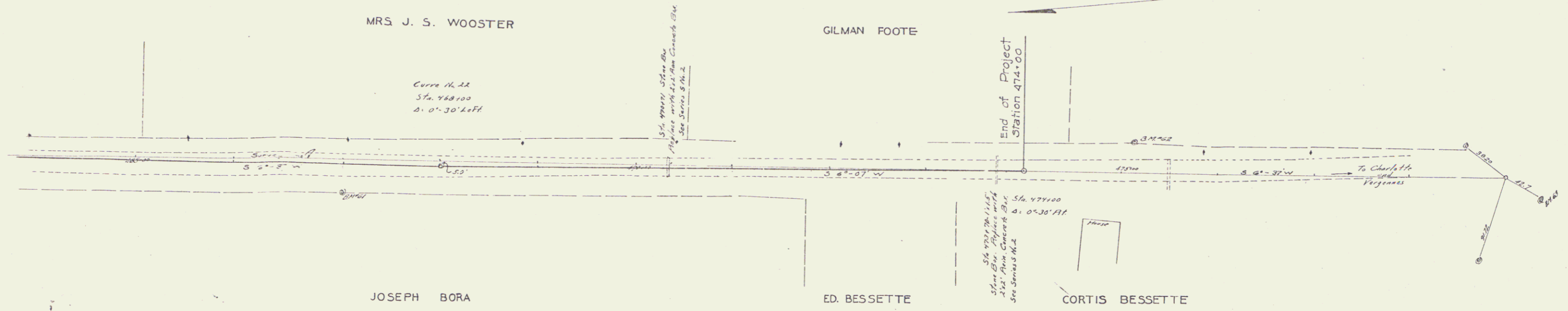
GUARD RAIL REQUIRED
 ON LEFT
 Sta. 470+59 to 470+83 length 24 lin. ft.
 473+58 " 473+82 " 24 " "
 ON RIGHT
 Sta. 470+59 to 470+83 length 24 lin. ft.
 473+58 " 473+82 " 24 " "

NEW CULVERTS REQUIRED
 Sta. 470+71 2x2' Box
 1-2-4 Concrete 3.6 cu yd
 1-2 1/2-5 " 7.8 " "
 Reinforcing Steel 128.0 lbs.

Sta. 473+70 2x2' Box
 1-2-4 Concrete 4.2 cu yd
 1-2 1/2-5 " 8.5 " "
 Reinforcing Steel 153.0 lbs.

6" SUB-BASE
 Sta. 467+00 to 474+00 Length 700'
 * 9" Sub-base for Bit-Mac.

PROPOSED ROAD AND FIGURE
 384 22-24 13 43



SERIES P. CONTROLLED
 SHEET 13 OF 43

18