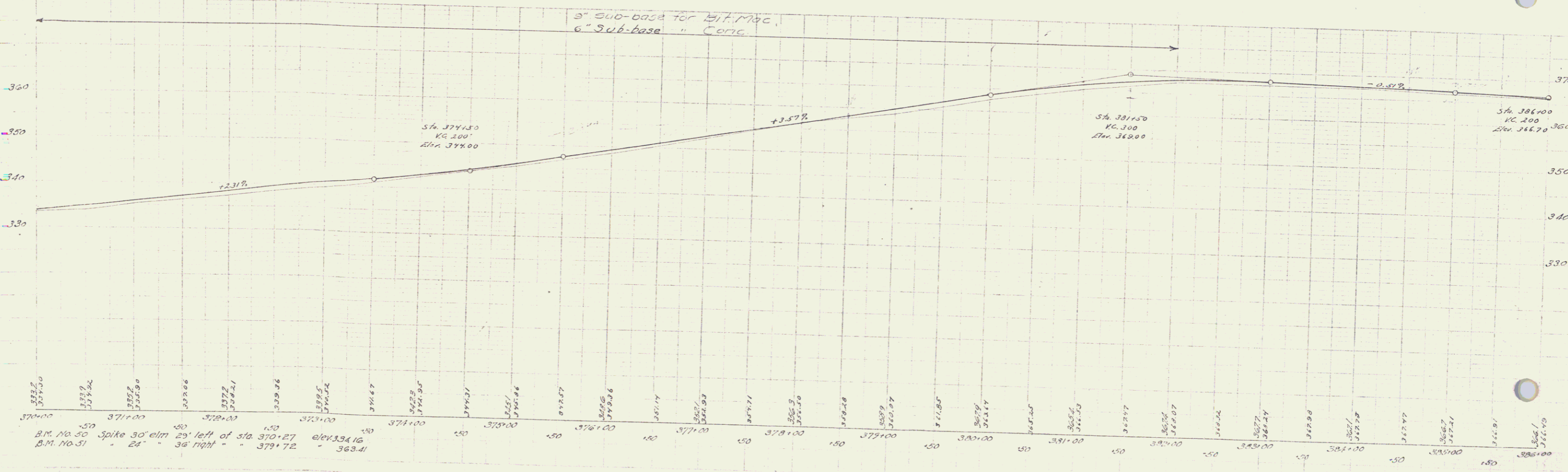
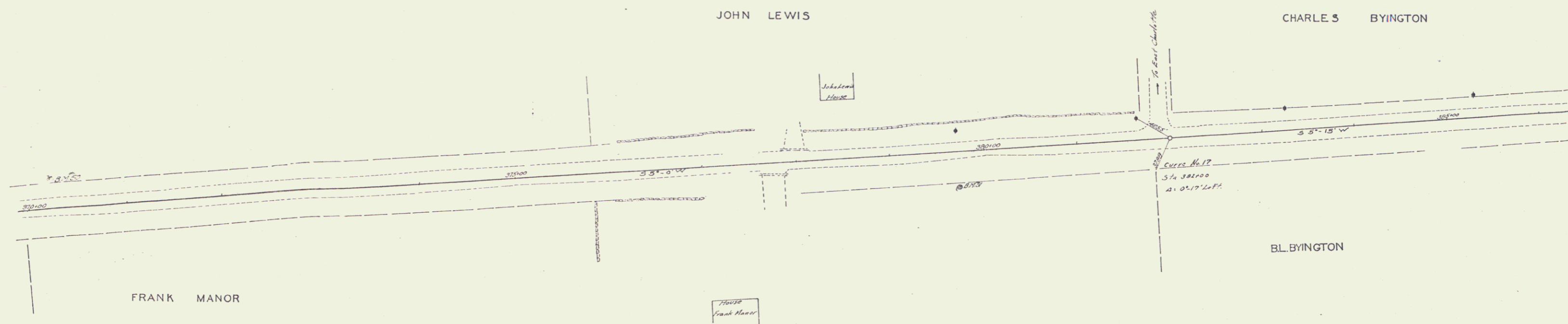


6" SUB-BASE Sta. 370+00 to 382+00 Length 1200'
 * 9" For Bituminous Macadam

UNDERDRAIN ON RIGHT Sta. 370+00 to 390+00 Length 1000'

NO. 100
 224 23 24 13



SERIES F CHAMBERLAIN
 SHEET 13 OF 40
 12