

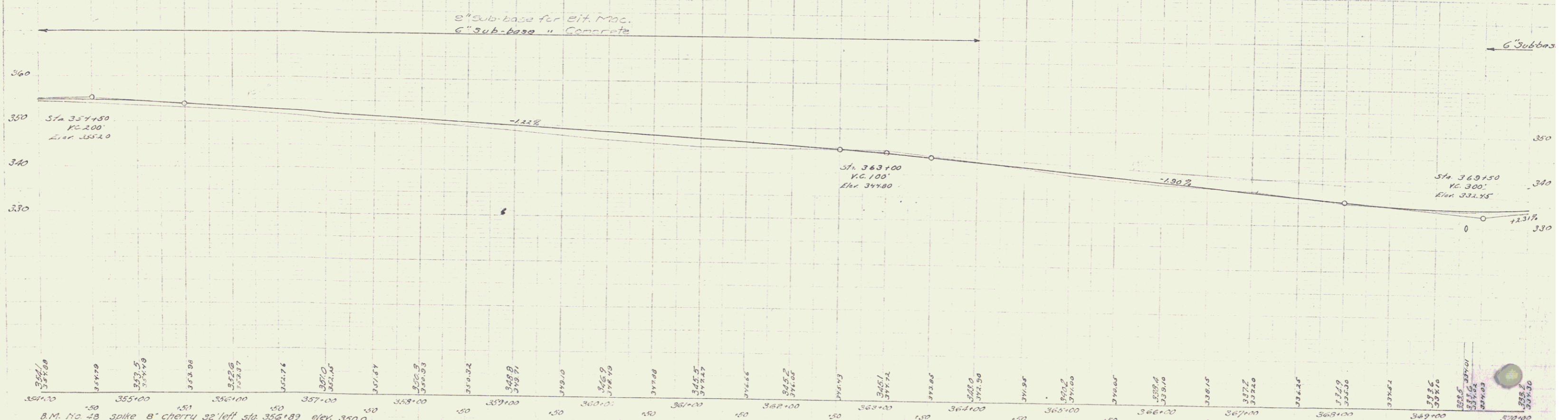
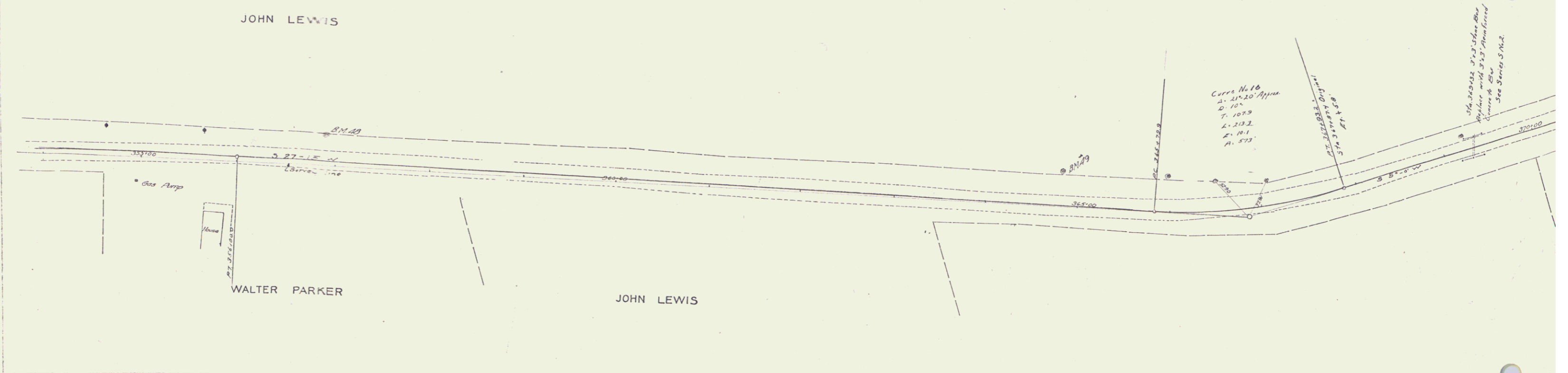
GUARD RAIL REQUIRED
ON LEFT
Sta. 369+20 to 369+44 length 24' - 4"
ON RIGHT
Sta. 369+20 to 369+44 length 24' - 4"

NEW CULVERTS REQUIRED
Sta. 369+32 3' x 3' Box
1-2-4 Concrete 3.4 cu yd.
1-2-5 " 11.2 " "
Reinforcing Steel 182.0 lbs.

6" SUB-BASE
Sta. 354+00 to 364+00 Length 100'
" 369+50 " 370+00 "
* 9" for Bituminous Macadam

UNDERDRAIN
Sta. 369+00 to 370+00 Length 100'

22.8 23.27 10 4.3



B.M. No 48 spike 8" cherry 32' left sta. 356+89 elev. 350.0
B.M. No 49 " 16" elm 36' " 364+83 " 343.24

SERIES P. UNPAID
SHEET 12 of 13