

WOOD GUARD RAIL REQUIRED

ON LEFT
Sta 323+02 to 323+26 length 24 ft.
" 327+76 " 328+00 " 24 "

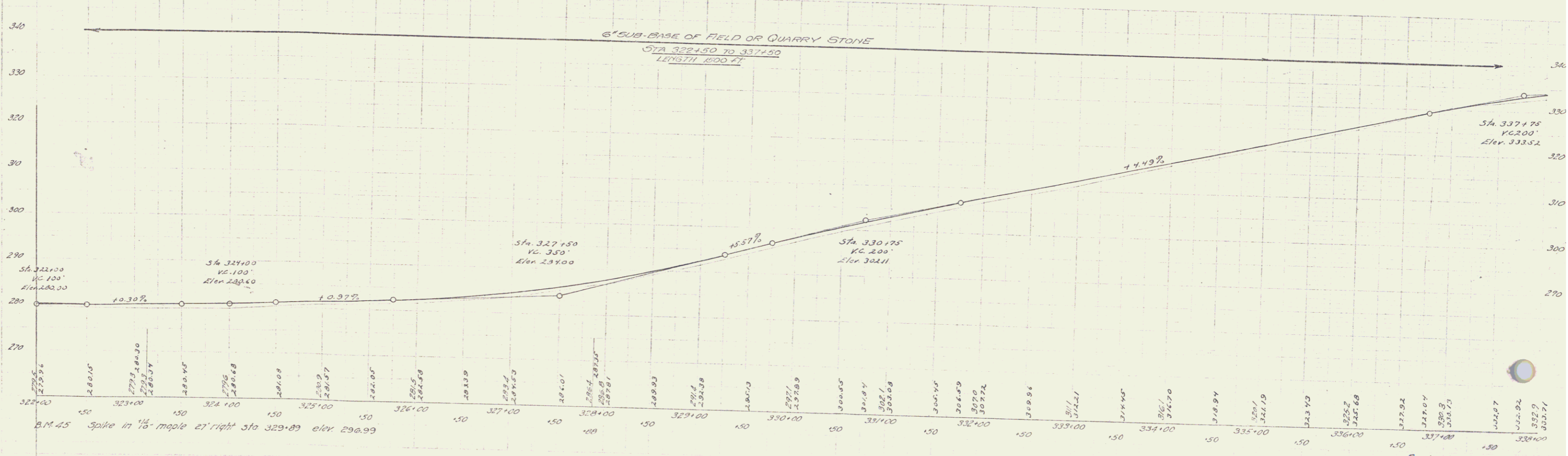
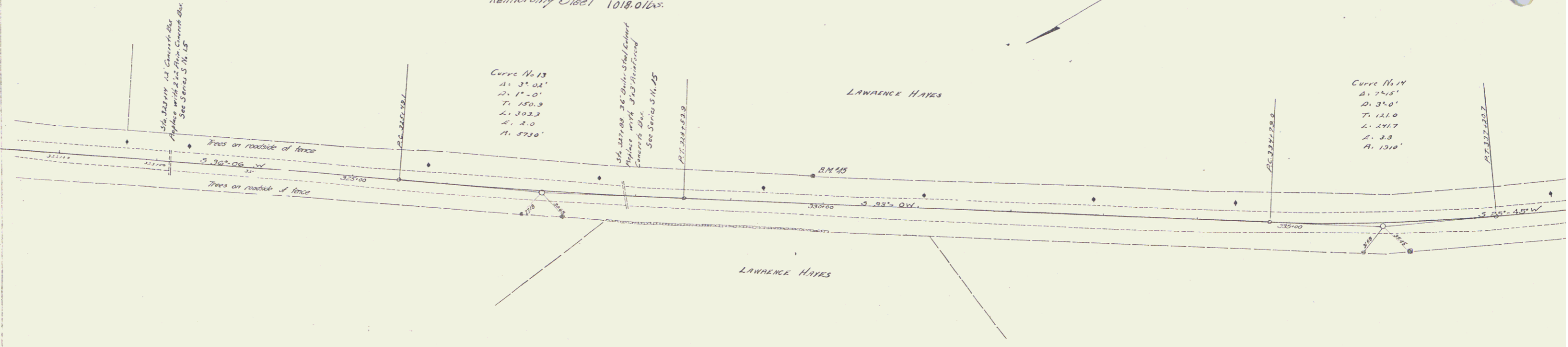
ON RIGHT
Sta 323+02 to 323+26 length 24 ft.
" 327+76 " 328+00 " 24 "

NEW CULVERTS REQUIRED

Sta 323+14 2x2' Box
1-2-4 Concrete 10.8 cu. yd.

Sta. 327+88 3x3' Box
reinforcing steel 700.0 lbs.
1-2-4 Concrete 15.7 cu. yd.
Reinforcing Steel 1018.0 lbs.

6" SUB-BASE OF FIELD OR QUARRY STONE
Sta. 322+50 to 337+50 Length 1500'



Checked
 1/1/1926
 1/1/1926
 1/1/1926

Series 7 Horizontal
Sheet 10 of 34

9