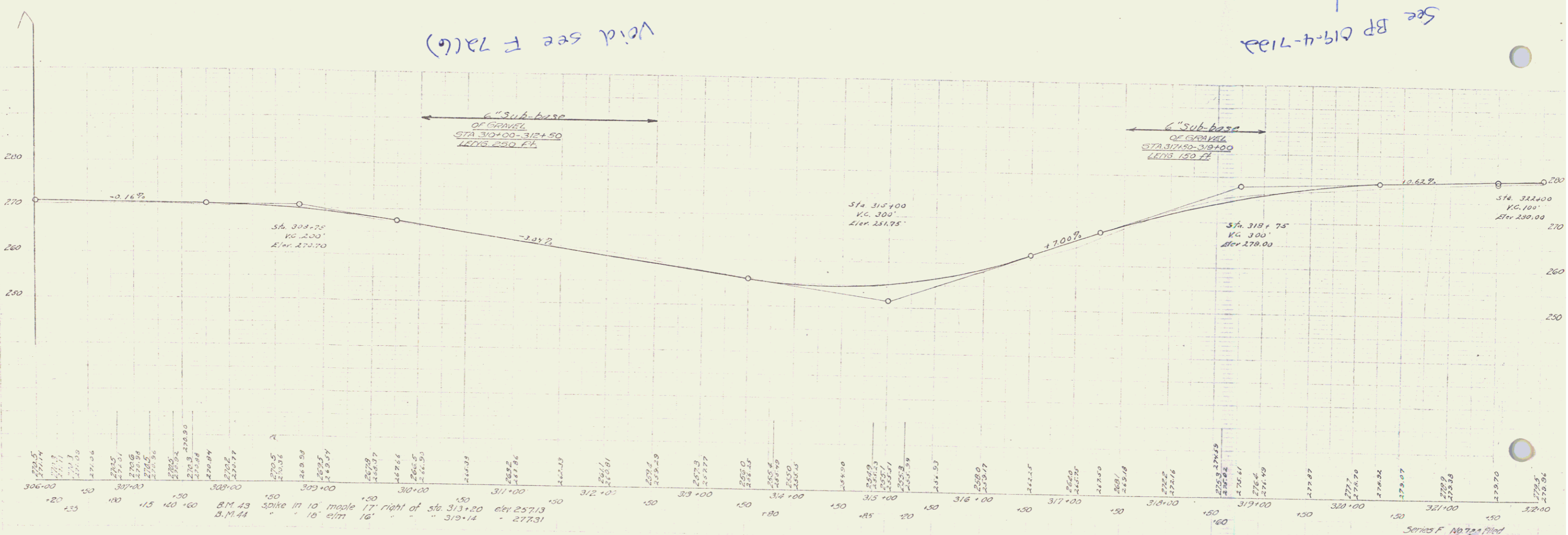
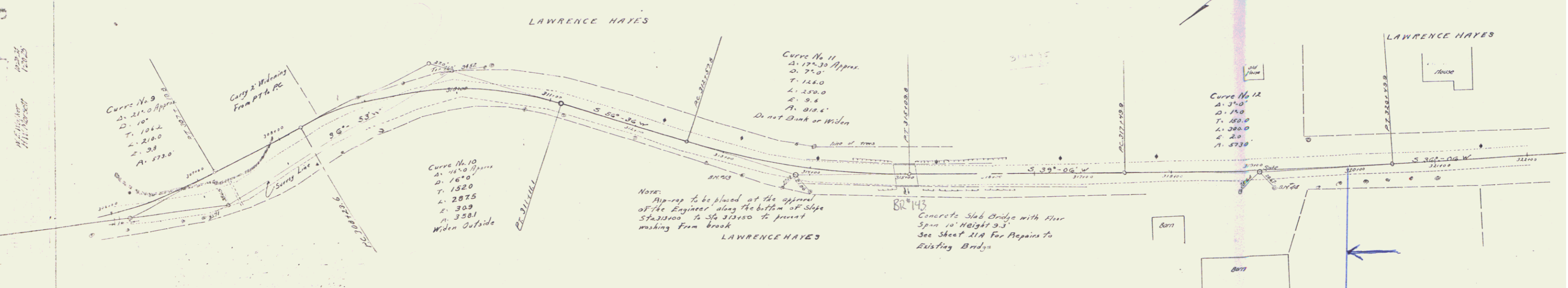


CABLE GUARD RAIL REQUIRED
 ON LEFT
 Sta. 313+82 to 314+96 length 112 lin. ft.
 " 315+15 " 316+03 " 88 " "
 ON RIGHT
 Sta. 313+96 to 314+96 length 600 lin. ft.
 " 315+15 " 317+23 " 208 " "

6" SUB-BASE OF GRAVEL
 Sta. 310+00 to 312+50 Length 250'

UNDERDRAIN
 Sta. 309+00 to 314+00 Length 500'



Void see F 7a(c)

See BP 619-4-71a