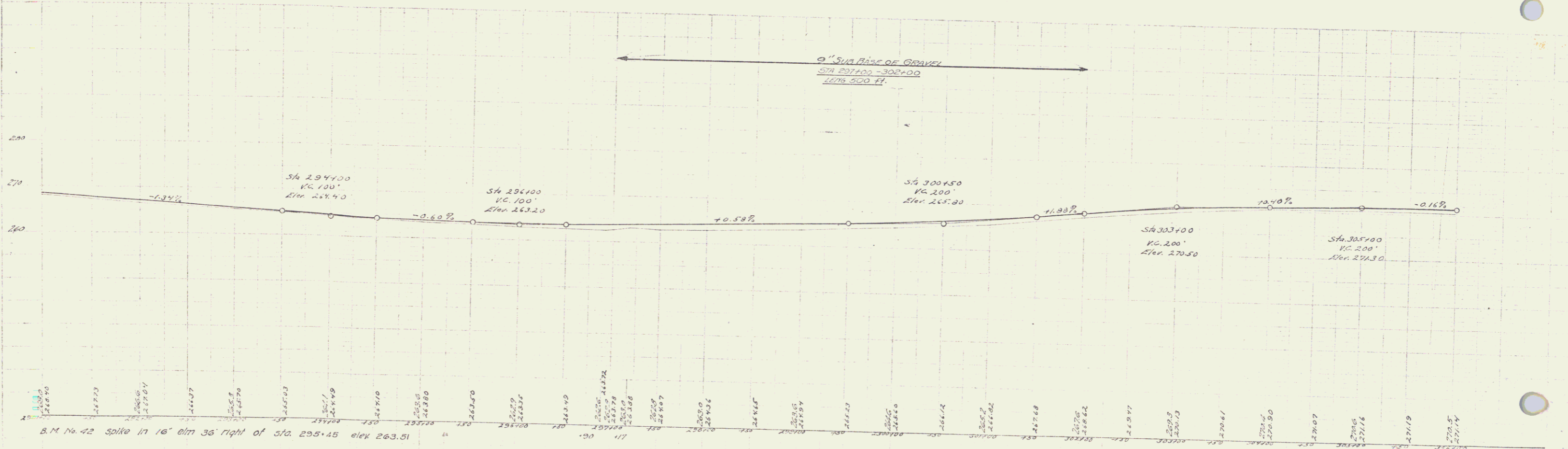
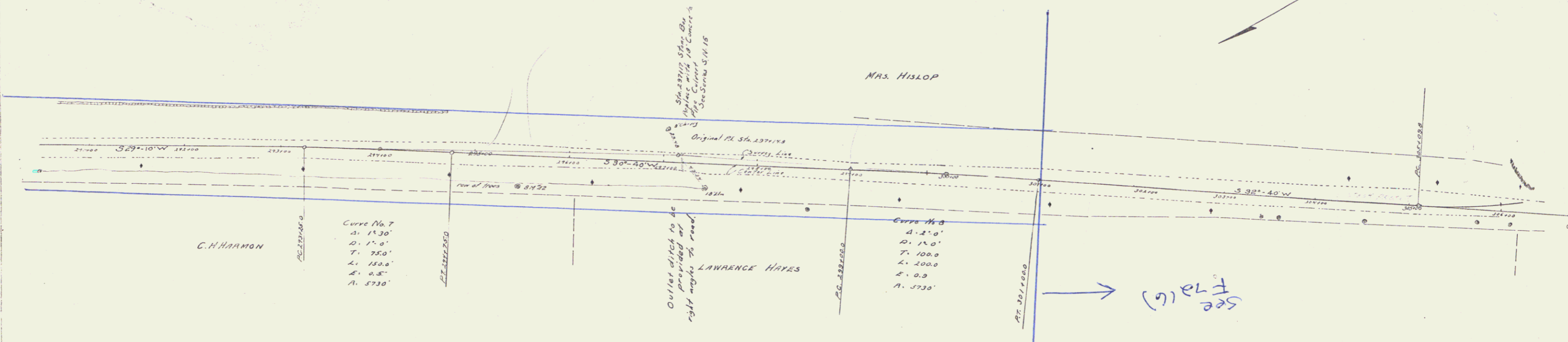


WOOD CURVED RAIL REQUIRED
 ON LEFT
 Sta. 297+05 to 297+29 length 24 lin. ft.
 ON RIGHT
 Sta. 297+05 to 297+29 length 24 lin. ft.

NEW CURVES REQUIRED
 Sta. 297+17 18" Box Concrete Pipe Length 32 ft
 1-2-5 Concrete
 Reinforcing Steel 35 lbs

9" SUB - BASE OF GRAVEL
 Sta. 297+00 To 302+00 Length 500'

NO. 1000 1000 1000
 727 23-27 34



B.M. No. 42 split in 16' elm 36' right of Sta. 295+45 elev 263.51

Series P No. 200 filled
 Sheet 3 of 34

7