

WOOD GUARD RAIL REQUIRED
ON LEFT
Sta. 234+88 to 235+12 Length 24' lin. ft.
ON RIGHT
Sta. 234+88 to 235+12 Length 24' lin. ft.

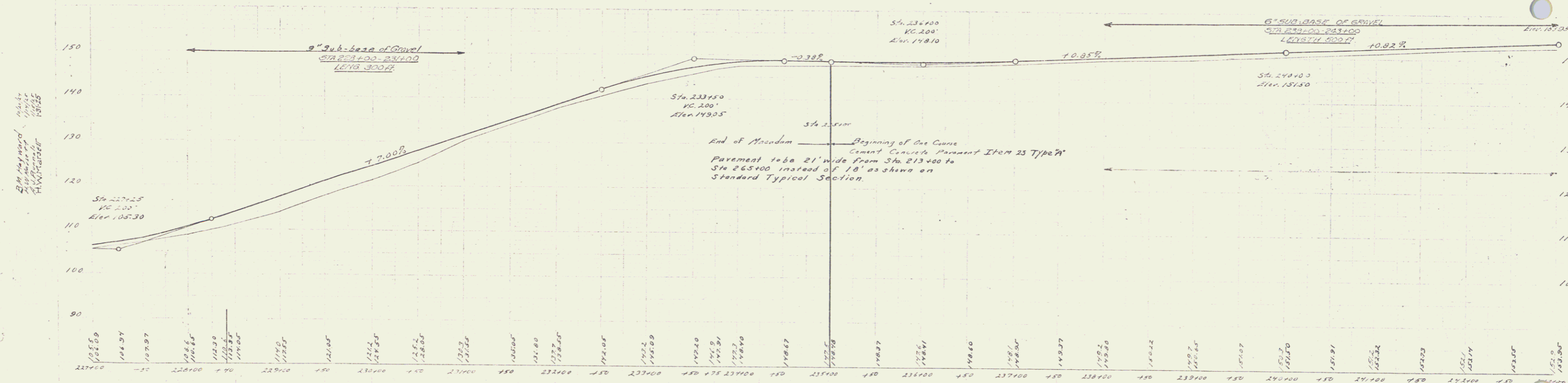
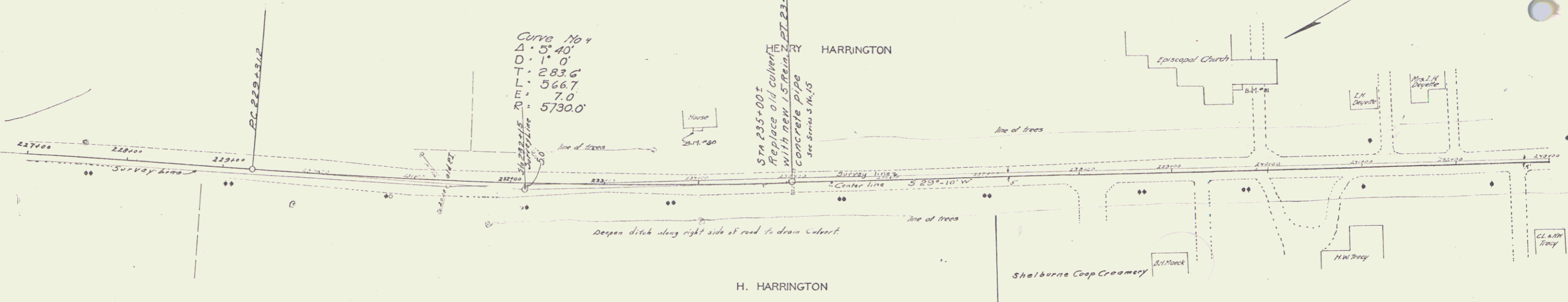
NEW CULVERTS REQUIRED
Sta. 235+00± 15" Rein Concrete Pipe Length 367.7
1-2 1/2" - 5 Concrete
Reinforcing Steel 33 lbs
21 cu yd.

6" SUB-BASE OF GRAVEL
Sta. 239+00 to 243+00 Length 500'
9" SUB-BASE OF GRAVEL
Sta. 228+00 to 231+00 Length 300'

Curve No. 4
Δ = 5° 40'
D = 1° 0'
L = 283.6'
T = 566.7'
R = 7.0'
E = 5730.0'

HEMLOCK HARRINGTON
Replace old culvert
with new 15" REIN
CONCRETE PIPE
See Sheet 34, 15

K.C. McCreight
1885



B.M. No. 30 N.W. Corner top step of H. Harrington house Elev. 148.63
B.M. No. 31 S.W. Episcopal Church Elev. 102.15

SERIES F No. 22 Filed
Sheet 34 of 34

3