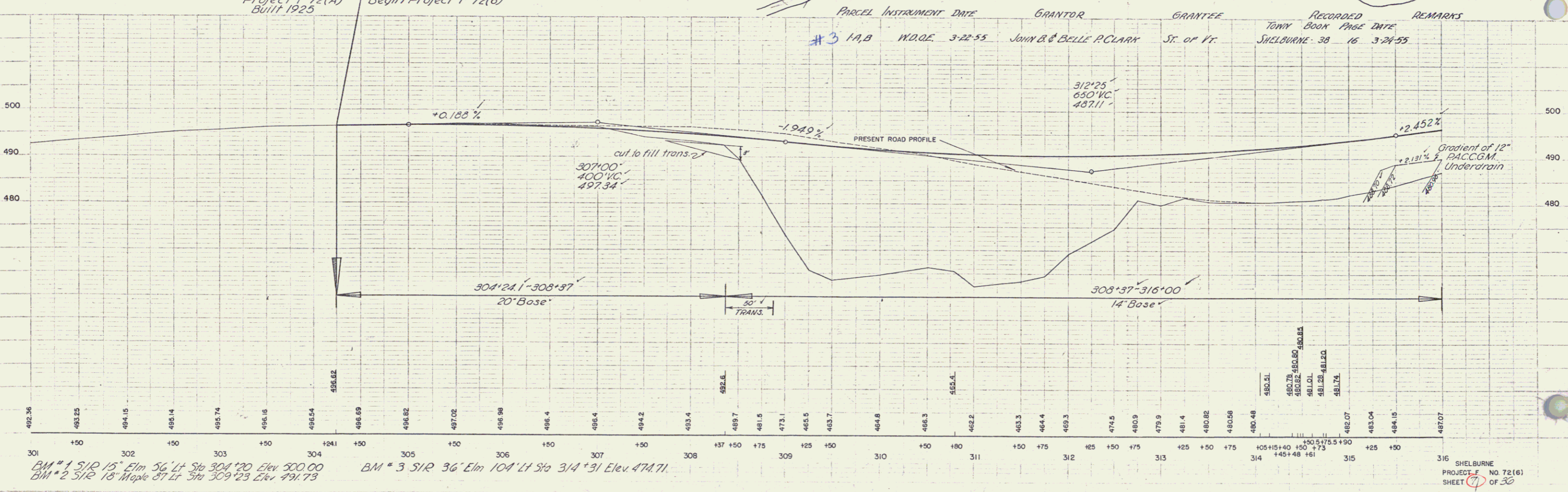
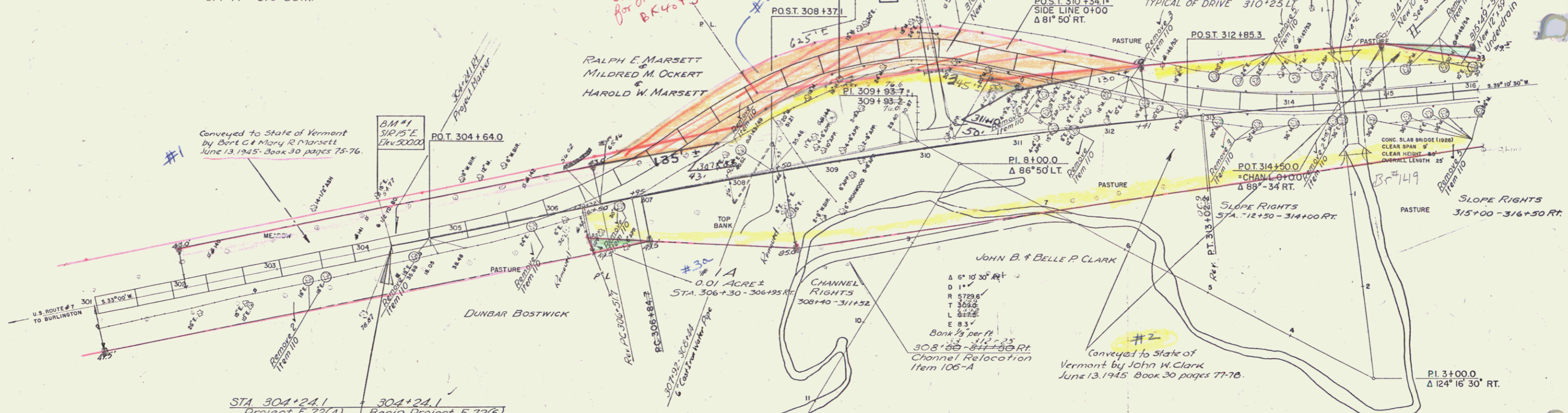


THREE CABLE GUARD RAIL WITH STEEL POSTS
 308+75 - 315+00 RT
 312+75 - 315+54 LT
 92

REMOVAL AND DISPOSAL OF PRESENT GUARD RAIL
 309+75 - 313+36 LT
 313+00 - 314+47 LT
 313+36 - 314+50 RT
 314+75 - 315+56 LT
 314+77 - 316+00 RT

306+70 - 312+35 Lt
 Remove Concrete Pavement, Item 101-B
 304+29 - 306+50
 317+69 - 320+53.3

QCO to Town of Shelburne for 0.55± Acre± stellas BK 46 P 230



PARCEL INSTRUMENT DATE	GRANTOR	GRANTEE	RECORDED TOWNY BOOK PAGE DATE	REMARKS
#3 1A/B W.D.E. 3-22-55	JOHN B & BELLE P. CLARK	ST. OF VT.	SHELBURNE 38 16 3-24-55	

BM #1 SIR 15' Elm 56' Lt Sta 304+20 Elev 500.00
 BM #2 SIR 18' Maple 57' Lt Sta 309+25 Elev 491.73
 BM #3 SIR 36' Elm 104' Lt Sta 314+31 Elev 474.71

316 SHELBURNE PROJECT NO 72(16) SHEET 7 OF 30