

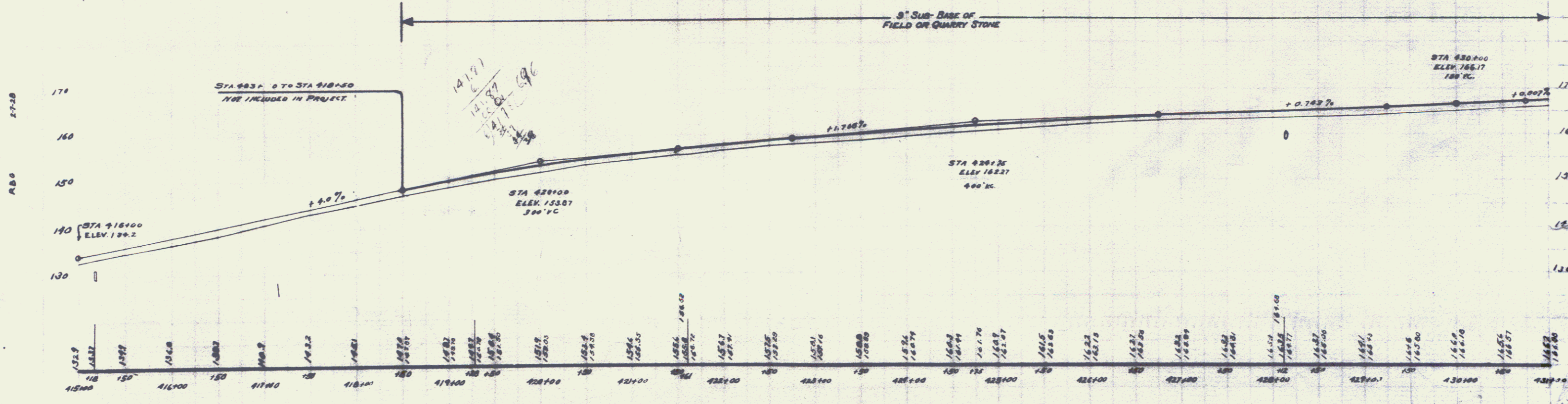
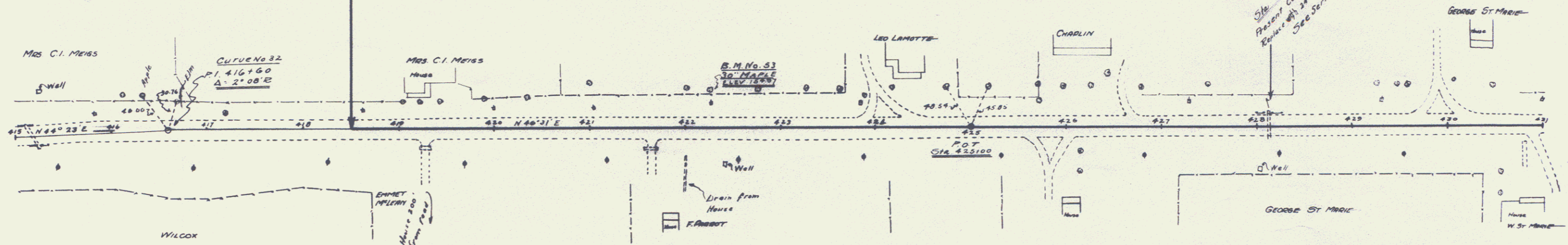
CABLE GUARD RAIL REQUIRED

ON LEFT
Sta. 427+00 to Sta. 429+00 Length 200 ft
ON RIGHT
Sta. 427+50 to Sta. 429+50 Length 200 ft

NEW CULVERTS REQUIRED

Sta. 428+12 24" Cast Iron Pipe Culvert 36 ft
Concrete Class A-1-2-A) 24" x 24"
Reinforcing Steel 24 pounds

STA 423+00 TO STA 418+50
NOT INCLUDED IN PROJECT



B.M. No. 53 - Spike in 30' Maple Left of Sta. 422+25. ELEV. 15587

SHEET NO. 32 B
OF 78