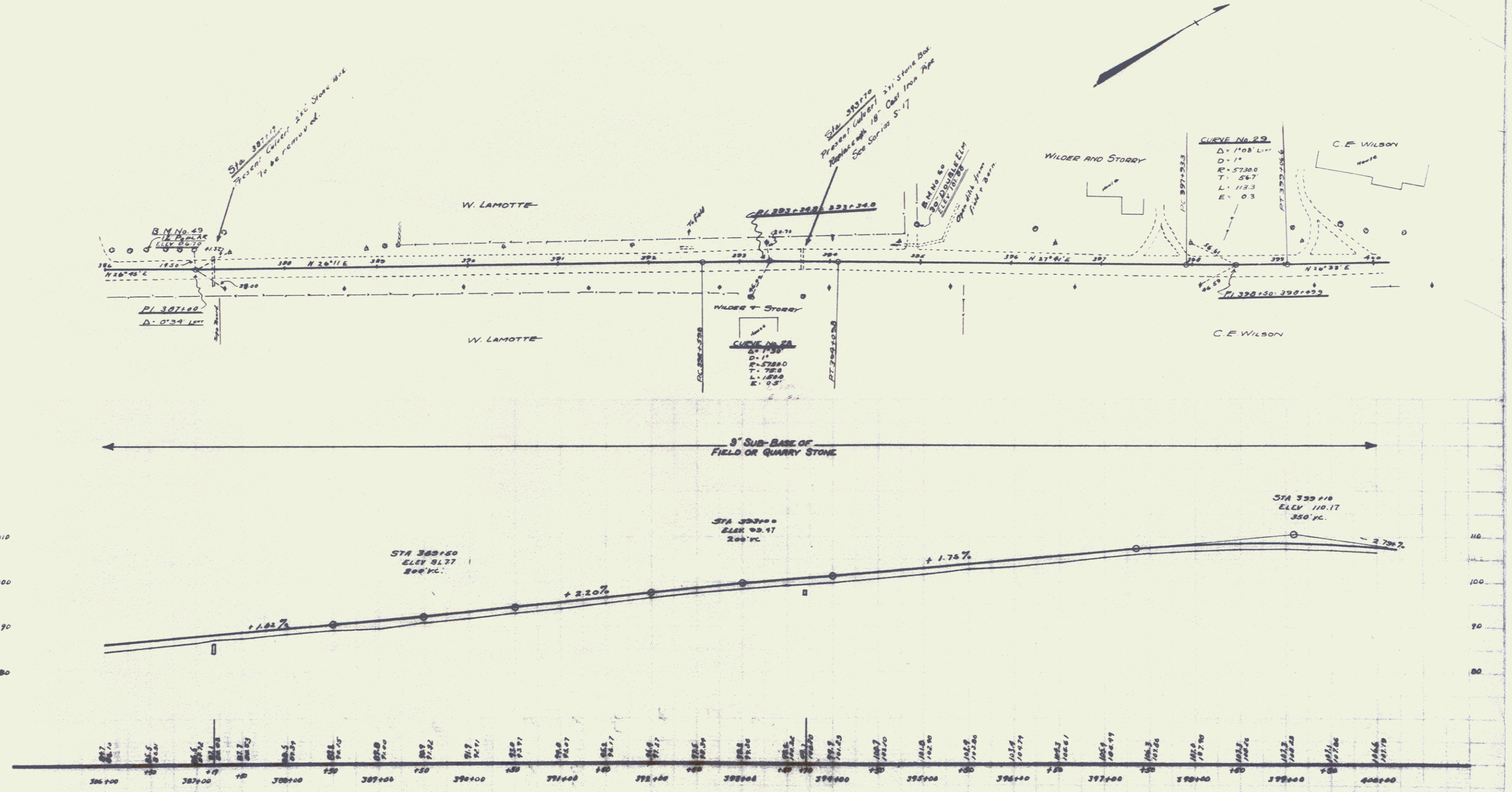


WOOD GUARD RAIL REQUIRED
 ALL
 Sta 393100 to Sta 393192 Length 24 ft
 ON RAMP
 Sta 393100 to Sta 393192 Length 24 ft

NEW CULVERTS REQUIRED
 Sta 393170 18" Cast Iron Pipe Culvert 25 ft
 Concrete Class B (1-2) 31 Cu Yds
 Reinforcing Steel 32 pounds

52 B 1928 2 P 79



B.M. No 49 Spike in 12" Taper on left of Sta. 393146 Elev 86.70
 50 Spike in Double Elm on left of Sta. 393175 Elev 101.88

SERIES E. No. 52 B
 SHEET 23 OF 71

20