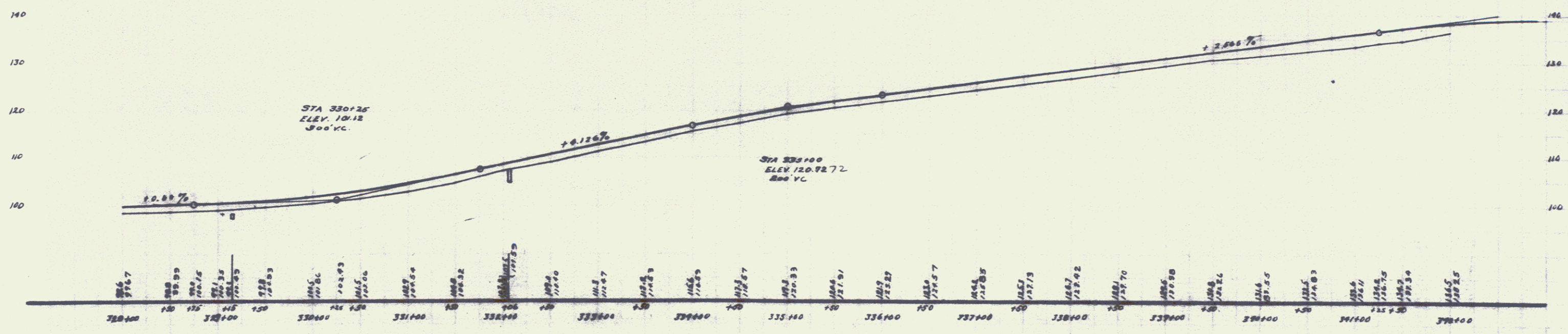
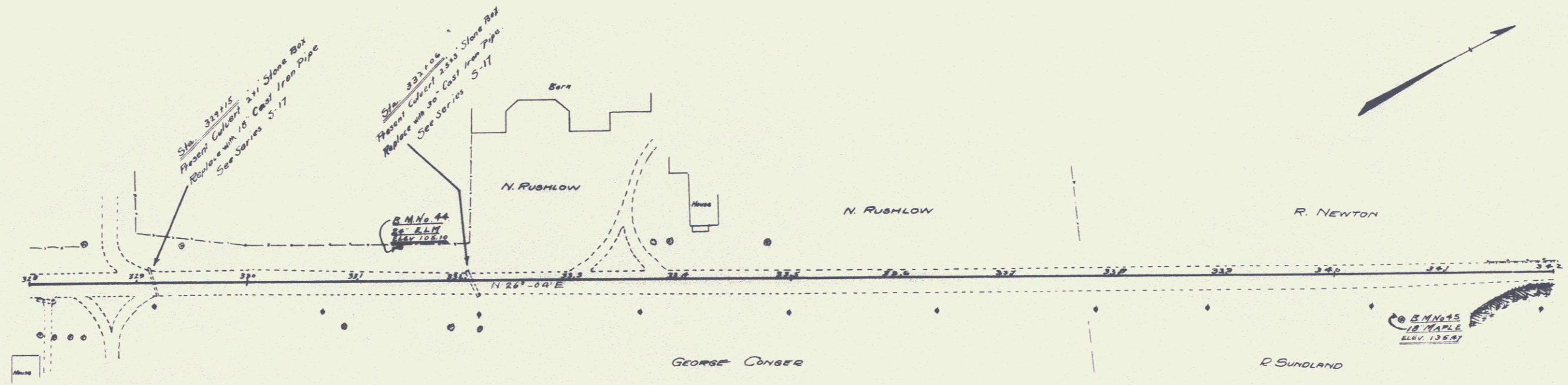


WOOD GUARD RAIL REQUIRED			CABLE GUARD RAIL REQUIRED			NEW CULVERTS REQUIRED							
Sta	329+00 to Sta	329+27	Length	27 ft	Sta	340+20 to Sta	342+00	Length	180 ft	Sta	329+15	18" Cast Iron Pipe Culvert	32 ft
	331+24	331+18		24								Concrete Class A (1-2-4)	17 cu yds
												Reinforcing Steel	59 pounds
Sta	329+00 to Sta	329+23	Length	23 ft						Sta	322+00	30" Cast Iron Pipe Culvert	32 ft
	331+24	331+18		24								Concrete Class A (1-2-4)	35 cu yds
												Reinforcing Steel	58 pounds



B.M. No. 44 Spire in 26' Elm on left of Sta. 331+00 Elev. 125.10  
 45 10' High on right of Sta. 340+00 132.47