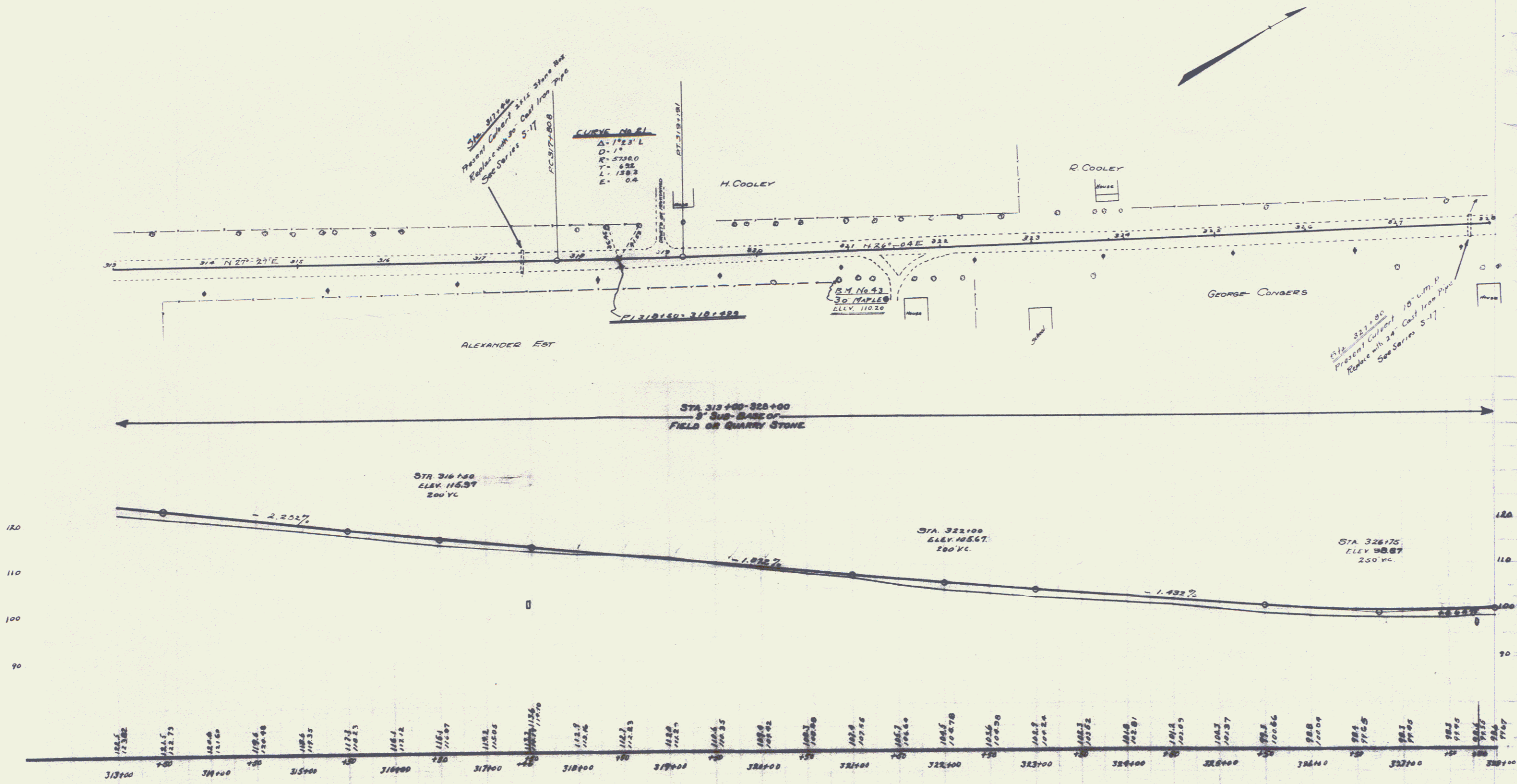


WOOD GUARD RAIL REQUIRED		NEW CULVERTS REQUIRED	
Sta 3171.34 to Sta 3171.58	Length 24 ft	Sta. 3111.46	30" Cast Iron Pipe Culvert 32 ft
3171.68	24 "		Concrete Class A (1-2-4) 33 Cu yds
			Reinforcing Steel 60 pounds
Sta 3171.58 to Sta 3171.82	Length 24 ft	Sta. 3271.80	24" Cast Iron Pipe Culvert 32 ft
3171.88	24 "		Class A Concrete (1-2-4) 24 Cu yds
			Reinforcing Steel 58 pounds



B.M. No 43 Spike in 30' Mark on Right of Sta. 3204.89 ELEV 110.20

SERIES F No 328  
SHEET 17 of 79

15