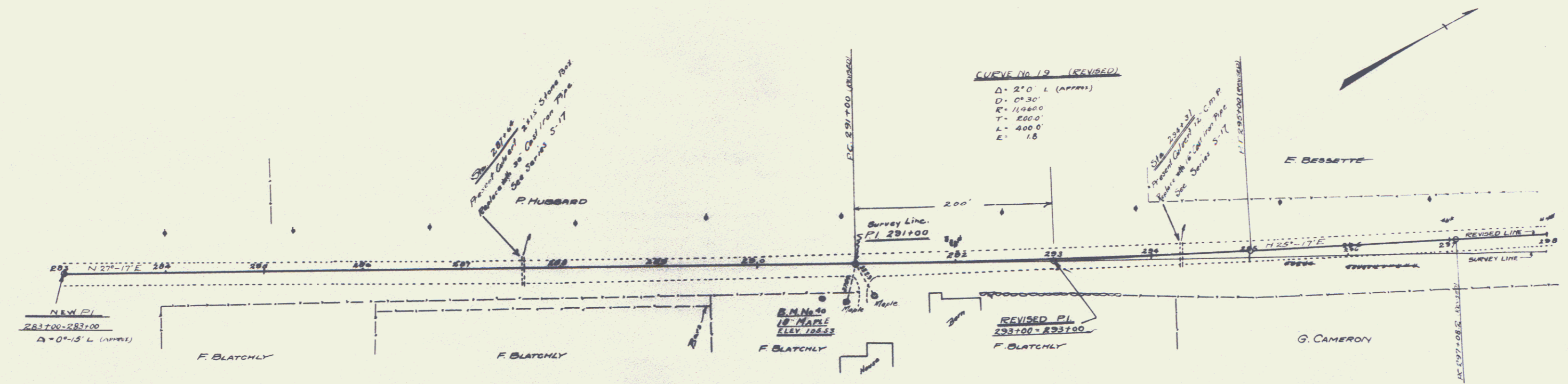


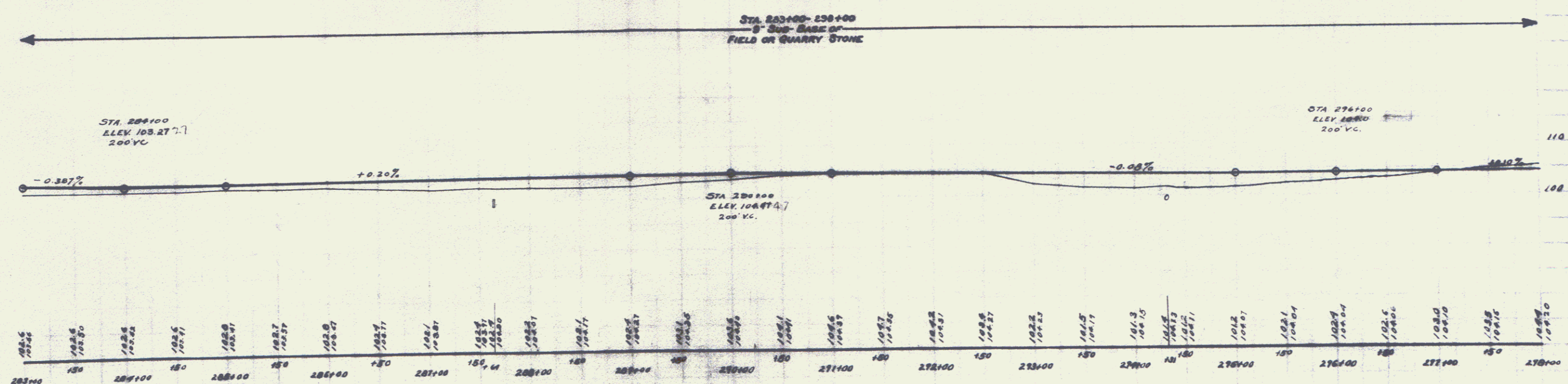
**WOOD GUARD REQUIRED**  
 ON LEFT  
 Sta 296118 to Sta 296148 Length 24 ft  
 ON RIGHT  
 Sta 296119 to Sta 296143 Length 24 ft

**CABLE GUARD RAIL REQUIRED**  
 ON LEFT  
 Sta 286172 to Sta 286180 Length 128 ft  
 ON RIGHT  
 Sta 283100 to Sta 283100 Length 500 ft

**NEW CULVERTS REQUIRED**  
 Sta 287164 36" Cast Iron Pipe Culvert 32 ft  
 Concrete Class A (1-2-4) 35 Cu Yds  
 Reinforcing Steel 38 pounds  
 Sta 296131 18" Cast Iron Pipe Culvert 24 ft  
 Concrete Class B (1-2-4) 27 Cu Yds  
 Reinforcing Steel 38 pounds



2.1.18  
 8/16



B.M. No. 40 Spite in 18" Hole on Right of Sta. 296+66 Elev. 105.53

SERIES F. No. 52.0  
 SHEET 15 OF 77