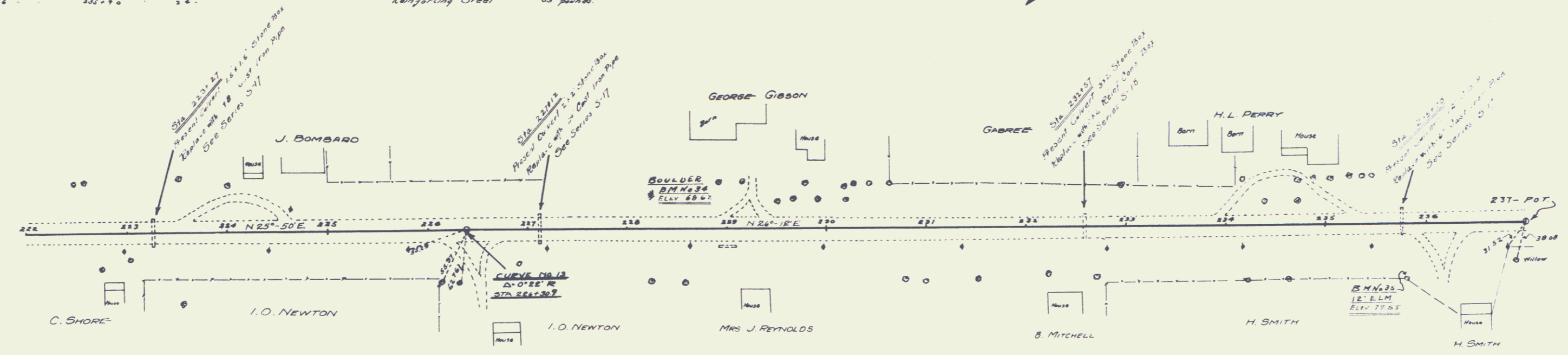


WOOD GUARD RAIL REQUIRED

ON LEFT		ON RIGHT	
Sta	to Sta	Sta	to Sta
222+00	222+12	222+12	222+12
223+15	223+30	223+30	223+30
227+00	227+24	227+24	227+24
231+46	231+69	231+69	231+69
235+66	235+90	235+90	235+90

NEW CULVERTS REQUIRED

Sta 223+27	18" Cast Iron Pipe Length 32 ft	Concrete Class B (1-2-4) 310 yds	Reinforcing Steel 33 pounds
Sta 227+12	24" Cast Iron Pipe Length 32 ft	Concrete Class A (1-2-4) 26 Cu yds	Reinforcing Steel 54 pounds
Sta 232+57	36" Reinforced Concrete Box Culvert	Concrete Class A (1-2-4) 12.8 Cu yds	Reinforcing Steel 787 pounds
Sta 235+70	18" Cast Iron Pipe Length 32 ft	Concrete Class B (1-2-4) 27 Cu yds	Reinforcing Steel 33 pounds



Sta	Elev	Sta	Elev	Sta	Elev	Sta	Elev	Sta	Elev	Sta	Elev	Sta	Elev	Sta	Elev	Sta	Elev	Sta	Elev												
222+00	72.7	223+00	72.96	224+00	72.2	225+00	72.5	226+00	72.1	227+00	72.2	228+00	72.5	229+00	72.8	230+00	72.9	231+00	72.9	232+00	72.9	233+00	72.9	234+00	72.9	235+00	72.9	236+00	72.9	237+00	72.9

B.M. No. 34 Boulder on left of Sta. 225+23 Elev. 68.62
 B.M. No. 35 Spike in 12" Lim on Right of Sta. 235+80 Elev. 77.54