

WOOD GUARDRAIL REQUIRED

ON LEFT

Sta. 192+00 to Sta. 193+00	Length	24 ft
193+00 to 194+00		24 ft
194+00 to 195+00		24 ft
195+00 to 196+00		24 ft
196+00 to 197+00		24 ft

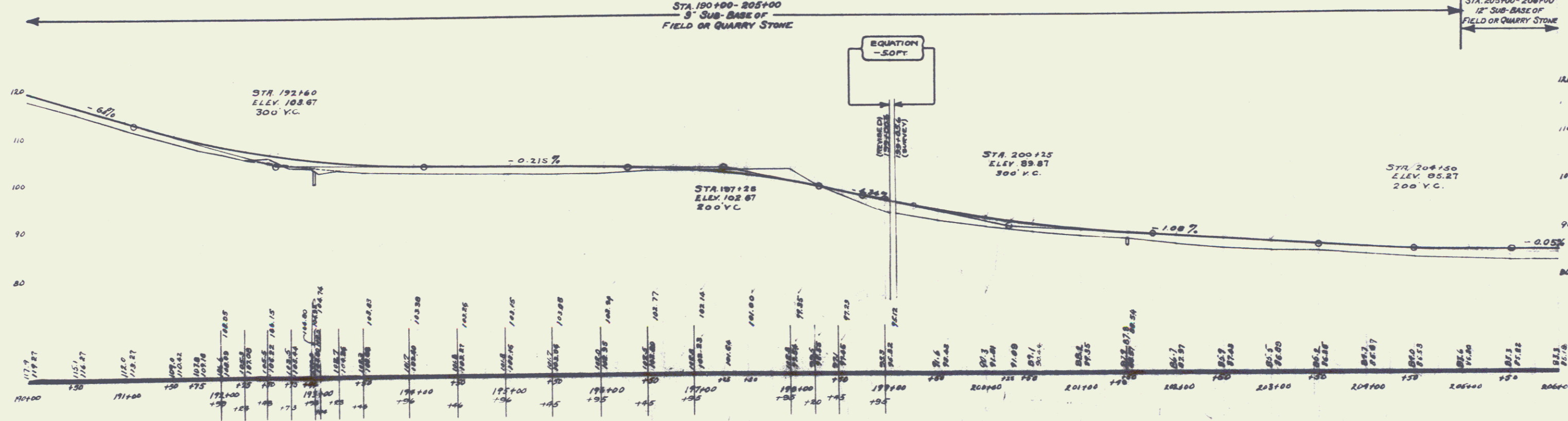
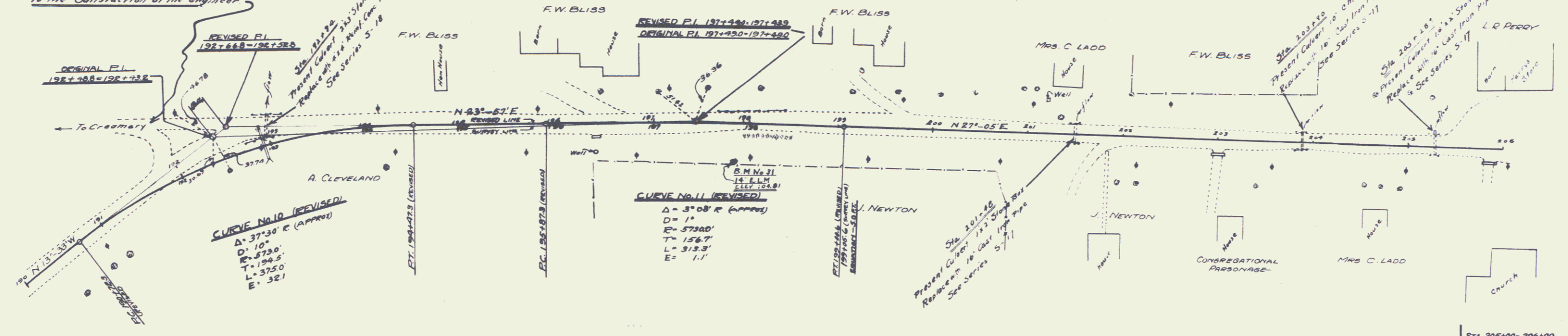
ON RIGHT

Sta. 192+00 to Sta. 193+00	Length	24 ft
193+00 to 194+00		24 ft
194+00 to 195+00		24 ft
195+00 to 196+00		24 ft
196+00 to 197+00		24 ft

NEW CULVERTS REQUIRED

Sta. 192+00	4' x 18" Rein. Conc. Box Culvert	218 Cu. Yds.
	Concrete Class A (1-2-3)	1400 pounds
	Reinforcing Steel	
Sta. 201+00	18" Cast Iron Pipe	32 ft.
	Concrete Class B (1-2-3)	27 Cu. Yds.
	Reinforcing Steel	33 pounds
Sta. 203+00	18" Cast Iron Pipe	32 ft.
	Concrete Class B (1-2-3)	27 Cu. Yds.
	Reinforcing Steel	33 pounds
Sta. 205+00	18" Cast Iron Pipe	32 ft.
	Concrete Class B (1-2-3)	27 Cu. Yds.
	Reinforcing Steel	33 pounds

Note - This road to be graded to the satisfaction of the engineer.



B.M. No. 31 Spike in 14' Lim Right of Sta. 197+71 Elev. 104.81

7