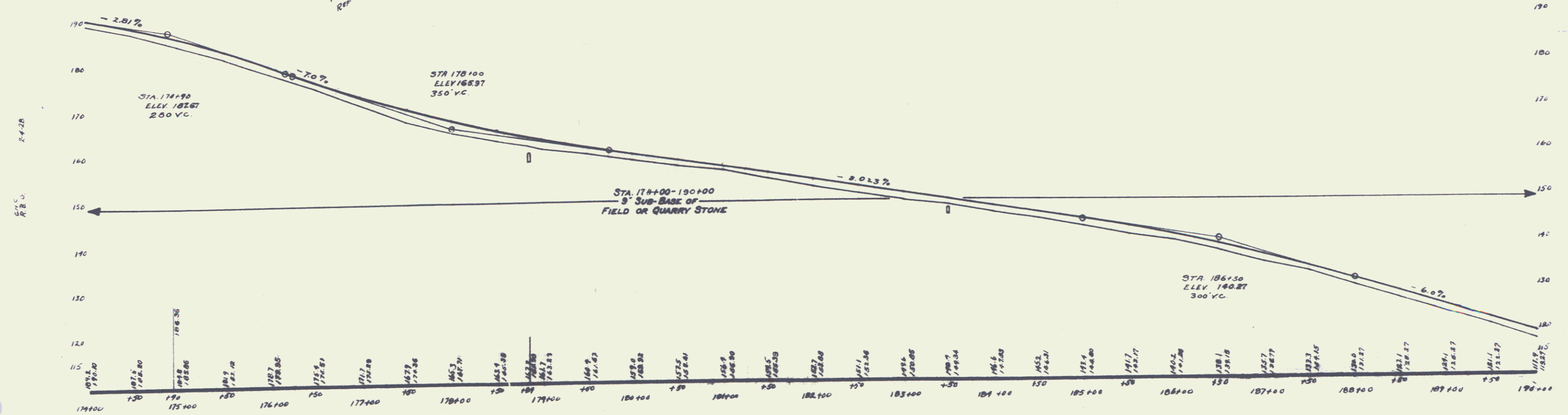
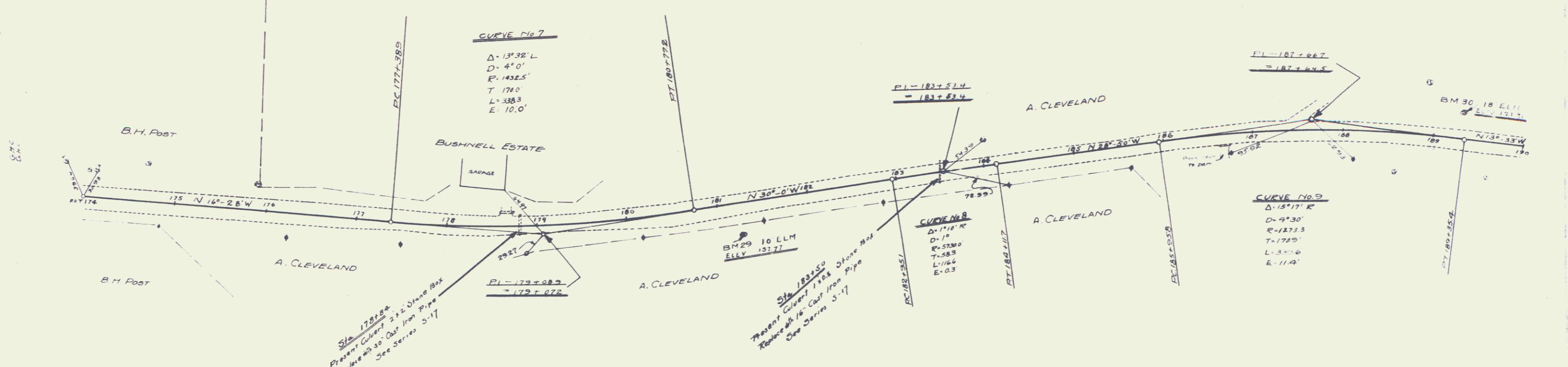


**WOOD GUARD RAIL REQUIRED**  
 Sta 178+72 to Sta 178+76 40' x 4" 24"  
 Sta 181+38 to Sta 181+42 4' x 4" 24"  
 Sta 178+72 to Sta 178+76 40' x 4" 24"  
 Sta 181+38 to Sta 181+42 4' x 4" 24"

**NEW CULVERTS REQUIRED**  
 Sta 178+84 30" Cast Iron Pipe length 34 ft  
 Concrete Class 40-3-4 3 cu yd  
 Reinforcing Steel 56 pounds  
 Sta 183+50 18" Cast Iron Pipe length 32 ft  
 Concrete Class 80-2-10 2 1/2 cu yd  
 Reinforcing Steel 33 pounds



BM No 29 Spike in 10' Elm. Right of Sm. 181+24 ELEV 157.77  
 Left " " 189+31 " 121.91

SERIES E No 52 B  
 SHEET 8 OF 71