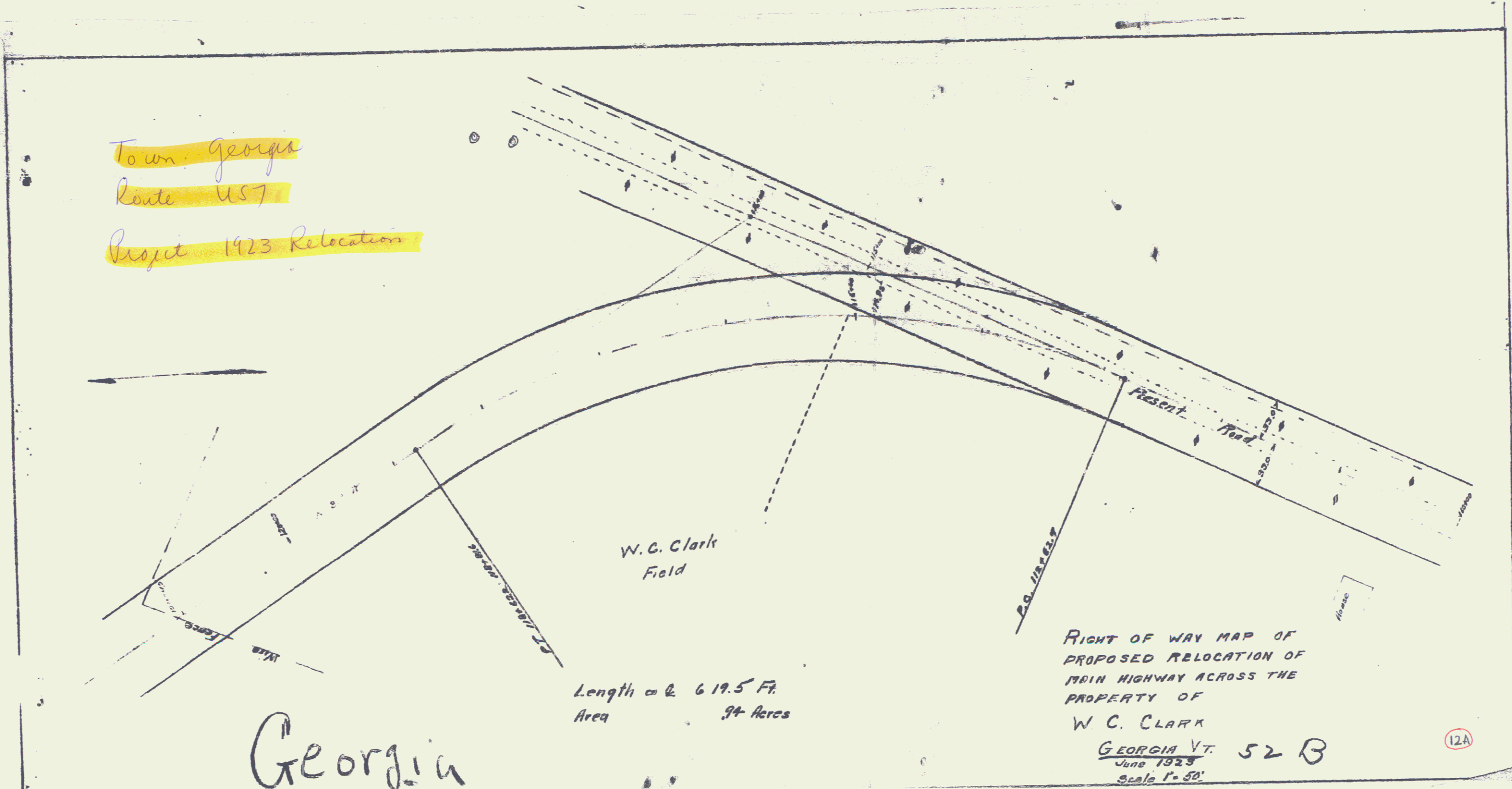


Town: Georgia
Route: US 7
Prop'd: 1923 Relocation



Length = 619.5 Ft.
Area = 94 Acres

RIGHT OF WAY MAP OF
PROPOSED RELOCATION OF
MAIN HIGHWAY ACROSS THE
PROPERTY OF
W. C. CLARK
GEORGIA V.T. 52 B
June 1923
Scale 1" = 50'

Georgia

12A