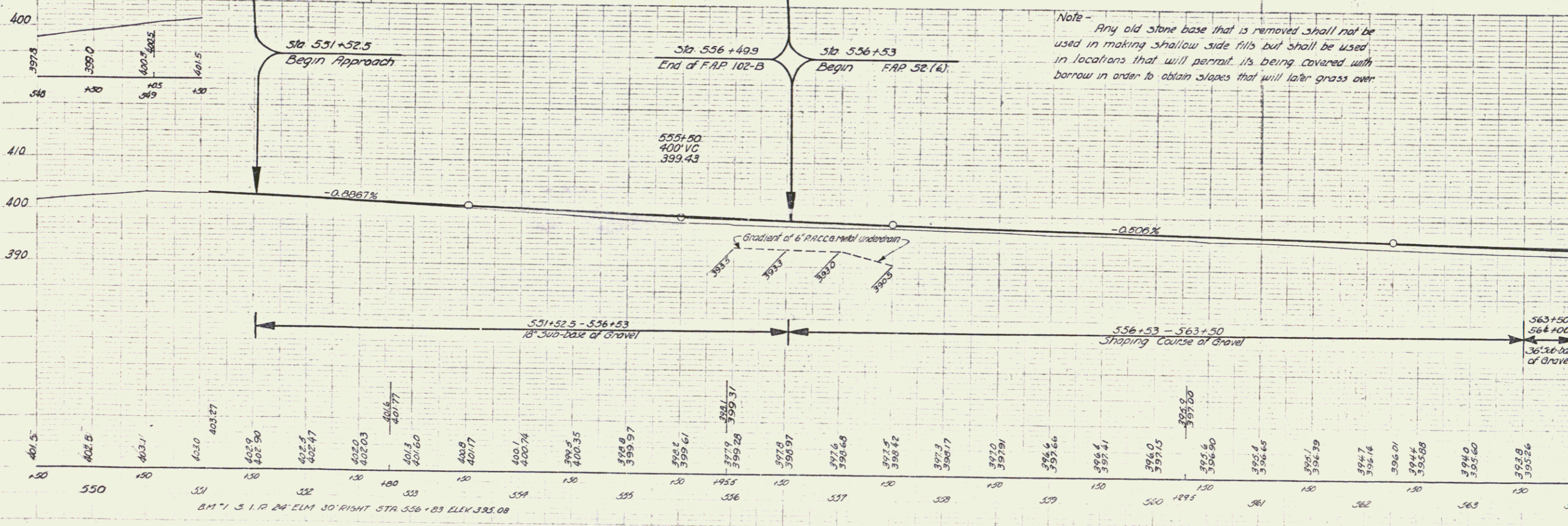
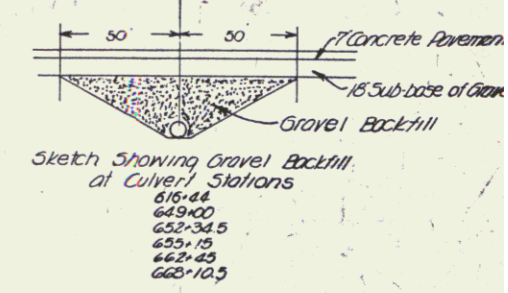
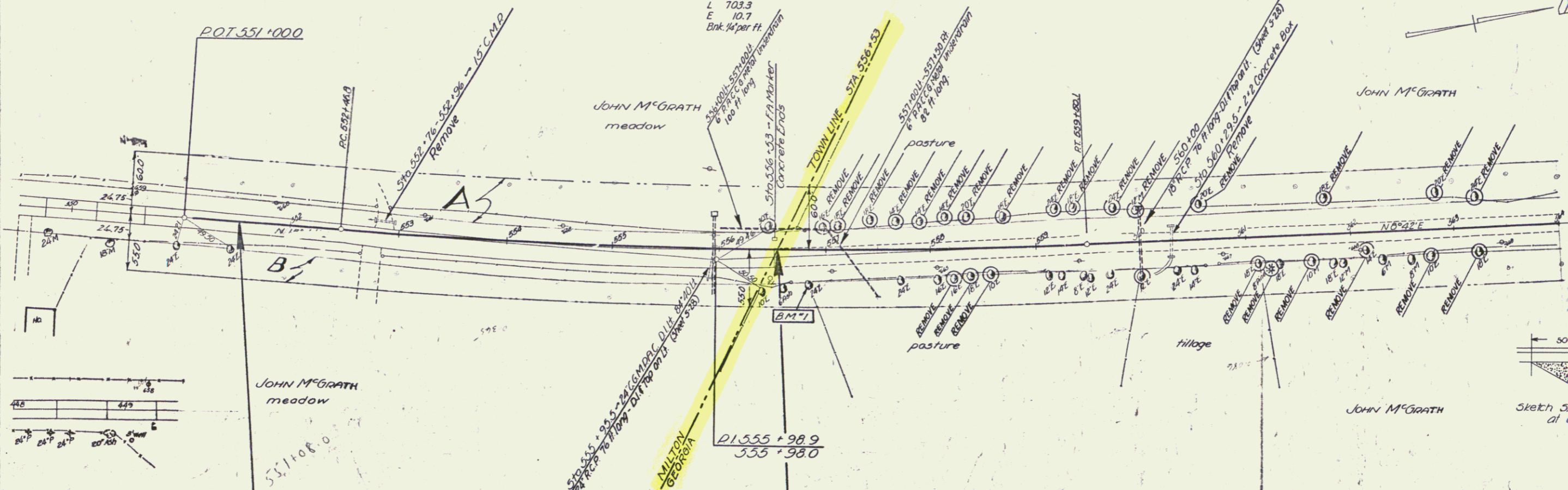




PARCEL INSTRUMENT DATE GRANTOR GRANTEE RECORDED REMARKS  
 A, B W.D.O.E. 8-9-44 JOHN M'GRATH ST OF YX MILTON  
 BOOK PAGE DATE  
 30 544 8-17-44

Δ 702.1 ft  
 D 1°  
 R 5730.0  
 T 352.1  
 L 703.3  
 E 10.7  
 Bk. 14 per ft.

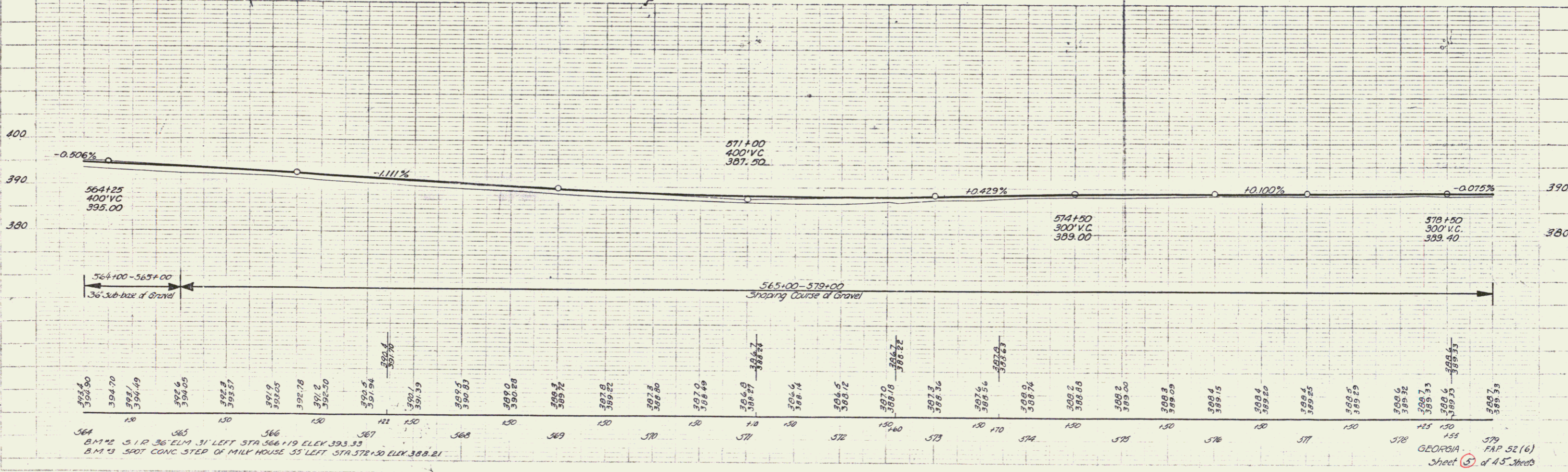
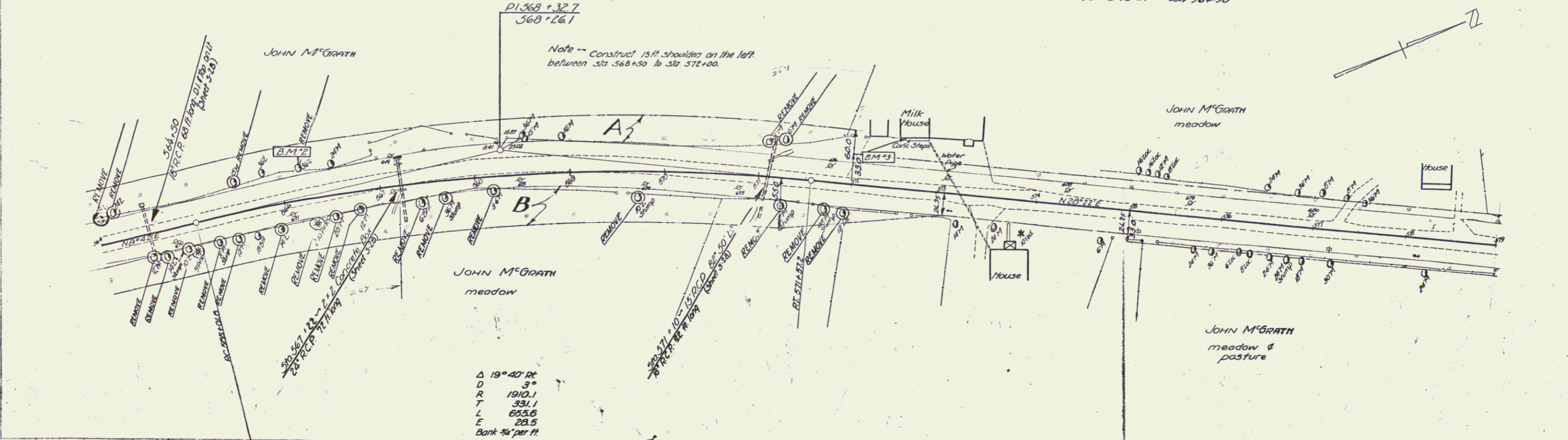
52(6) 4 43



GEORGIA  
 FAP 52(6)  
 Sheet 4 of 45 sheets

PARCEL	INTRUMENT	DATE	GRANTOR	GRANTEE	RECORDED	REMARKS
A.B.	WDOE	8-9-44	JOHN M'GRATH	ST. OF VT.	BOOK PAGE DATE	
					23 565-66 8-16-44	GM 564-50

FED. ROAD DIST. NO.	STATE	FED. AID PROJ. NO.	FISCAL YEAR	SHEET NO.	TOTAL SHEETS
	GA			5	45



FILED  
DATE  
BY  
REVISIONS

FILED  
DATE  
BY  
REVISIONS

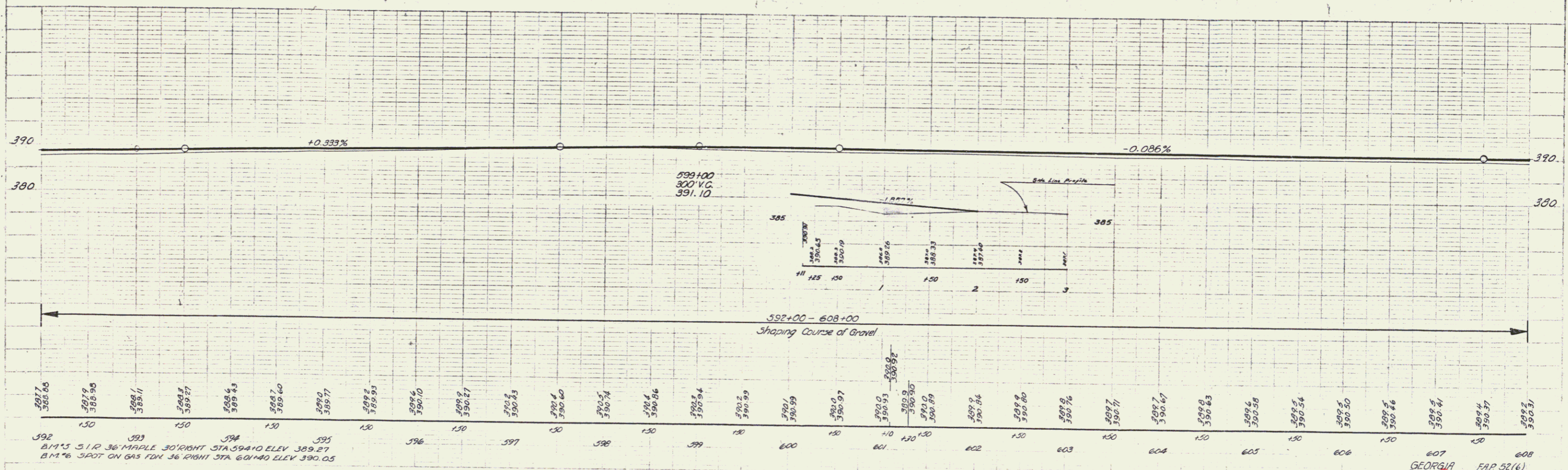
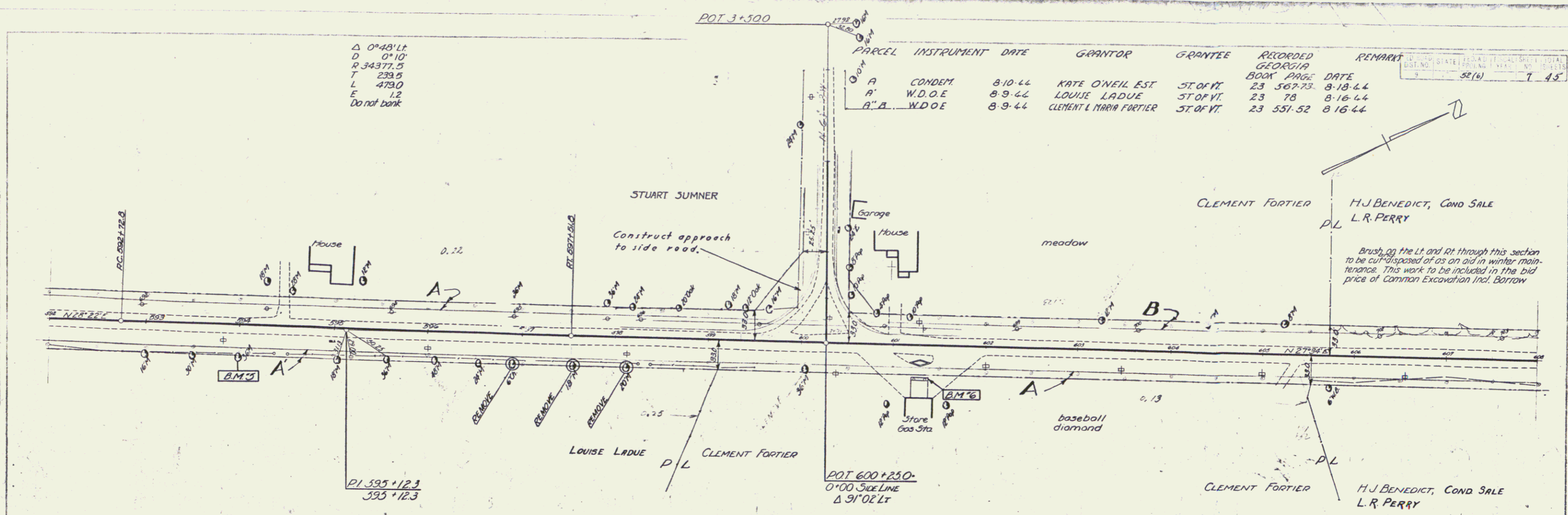
B.M.#2 S 1/4 36' ELM 31' LEFT STA 566+19 ELEV 393.33  
B.M.#3 SPOT CONC STEP OF MILK HOUSE 55' LEFT STA 572+30 ELEV 389.81

GEORGIA MAP 52(6)  
Sheet 5 of 45 sheets



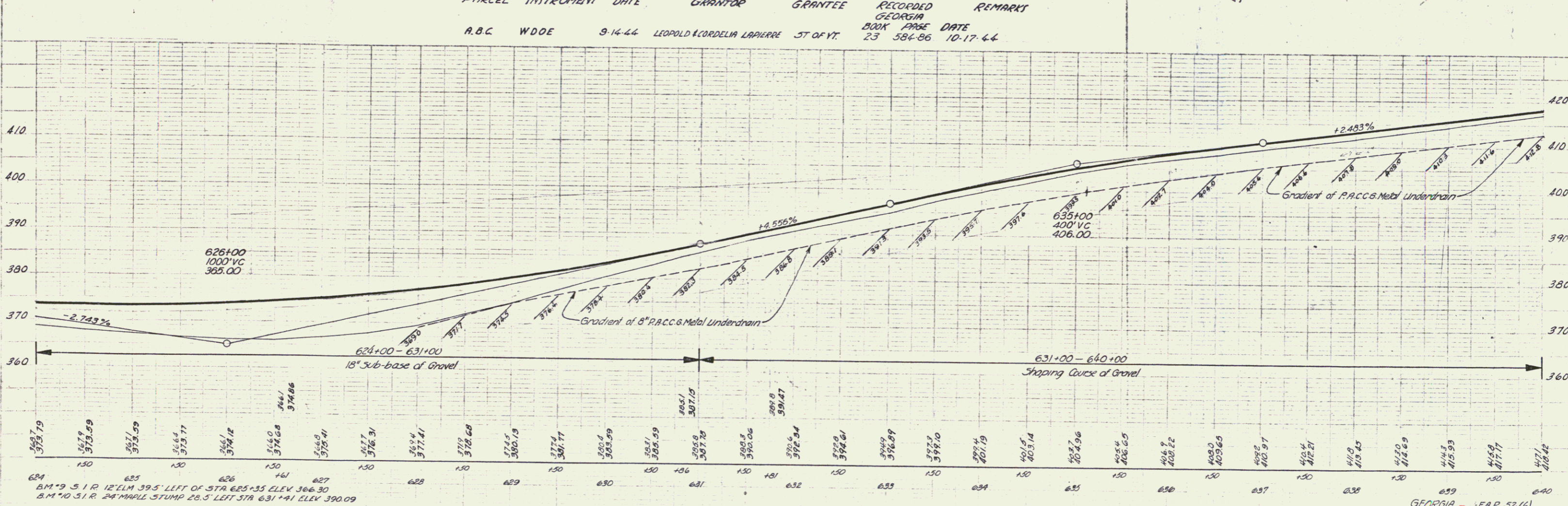
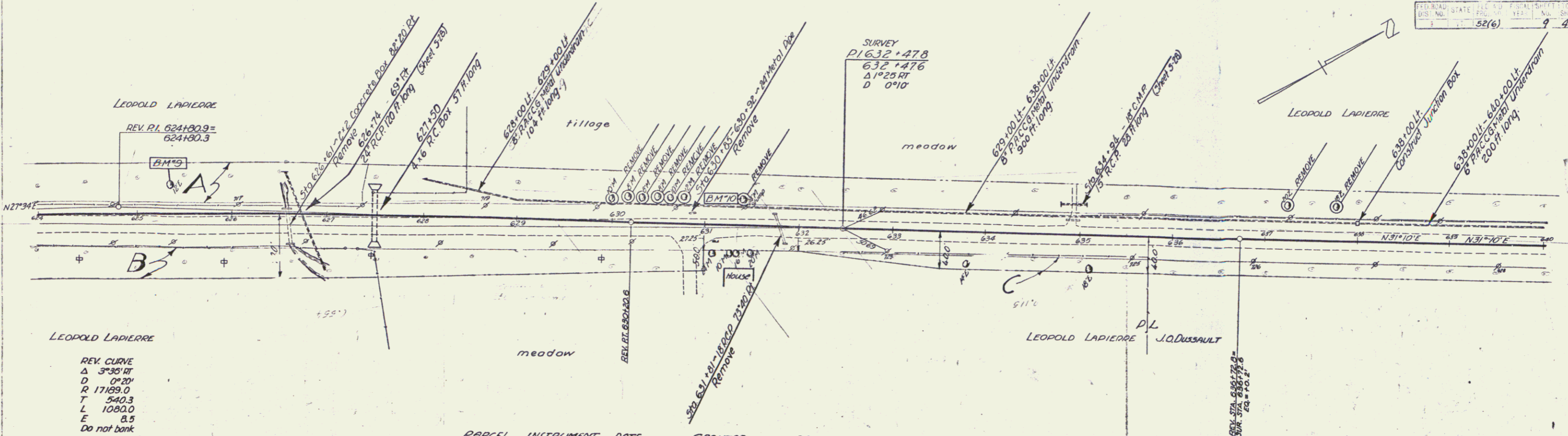
$\Delta 0^{\circ}48'11''$   
 $D 0^{\circ}10'$   
 $R 34377.5$   
 $T 239.5$   
 $L 473.0$   
 $F 1.2$   
 Do not bank

PARCEL	INSTRUMENT	DATE	GRANTOR	GRANTEE	RECORDED GEORGIA	REMARKS
A	CONDEM.	8-10-44	KATE O'NEIL EST	ST OF VT	BOOK PAGE DATE	
A'	W.D.O.E	8-9-44	LOUISE LADUE	ST OF VT	23 567-73	8-18-44
A''	W.D.O.E	8-9-44	CLEMENT & MARIA FORTIER	ST OF VT	23 78	8-16-44
					23 551-52	8-16-44



592 389.77  
 593 389.27  
 594 389.27  
 595 389.27  
 596 389.27  
 597 389.27  
 598 389.27  
 599 389.27  
 600 389.27  
 601 389.27  
 602 389.27  
 603 389.27  
 604 389.27  
 605 389.27  
 606 389.27  
 607 389.27  
 608 389.27



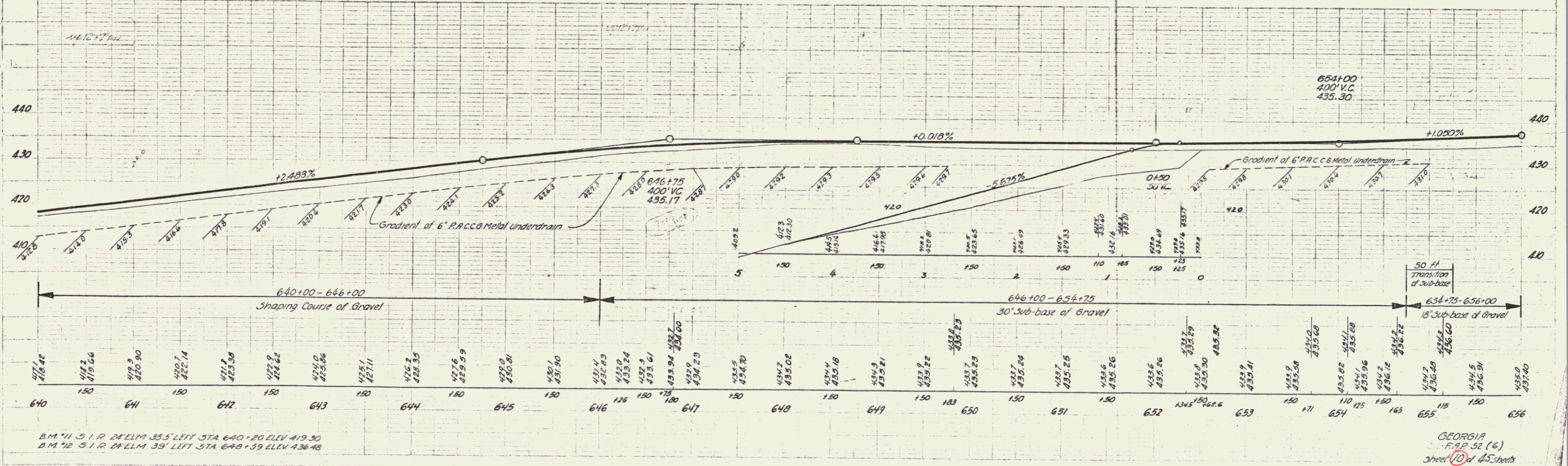
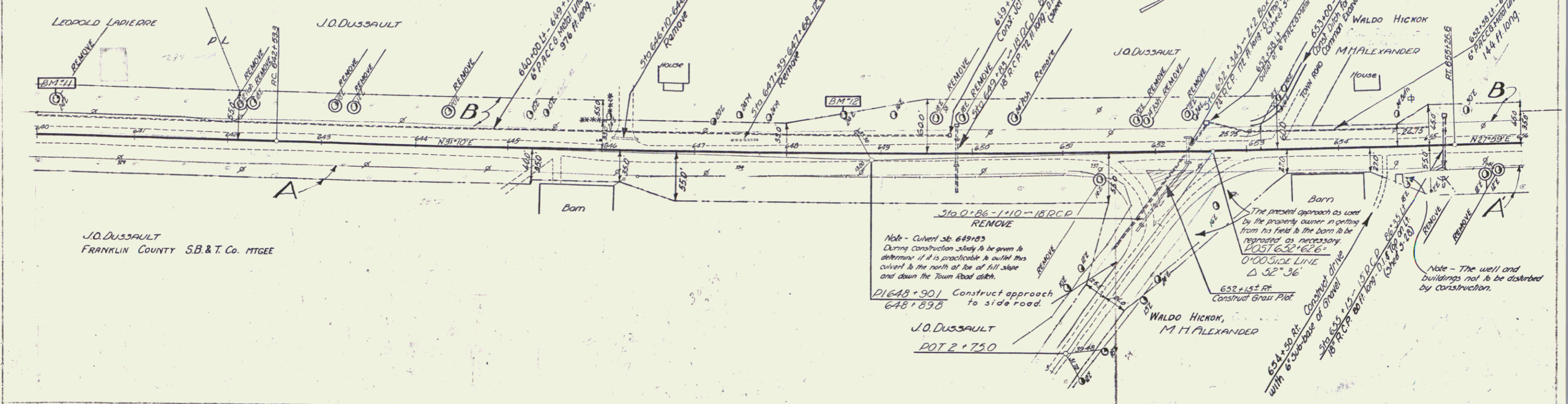


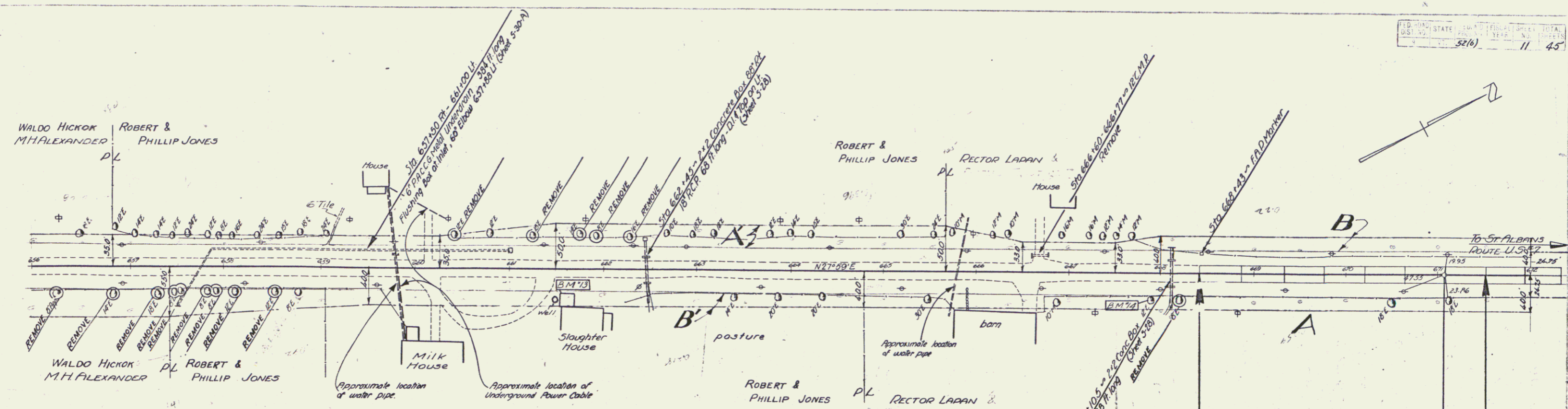
Station	Elevation
624	369.7
625	372.79
626	375.59
627	378.59
628	381.59
629	384.59
630	387.59
631	390.59
632	393.59
633	396.59
634	399.59
635	402.59
636	405.59
637	408.59
638	411.59
639	414.59
640	417.59

PARCEL	INSTRUMENT	DATE	GRANTOR	GRANTEE	RECORDED	REMARKS
A.B.	W.D.O.E.	8-9-44	J.O. & MORTENIE DUSSAULT	ST. OF RT.	23 554-55	8-16-44
A.B.	W.D.O.E.	8-10-44	WALDO & LAURA HICKOK	ST. OF RT.	23 558-59	8-16-44

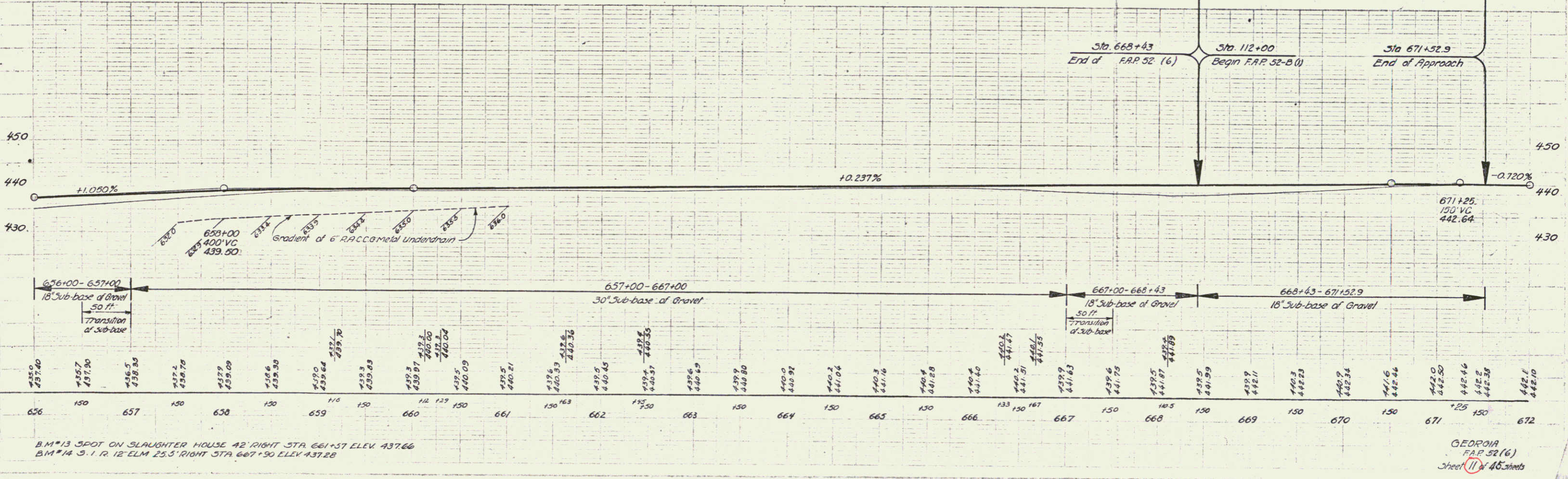
$\Delta$  3°11'11" LT  
 $D$  0°15'  
 $R$  22913.3  
 $T$  636.8  
 $L$  1273.3  
 $E$  0.0  
 Do not bank

STATE OF GEORGIA  
 52(6)  
 10 45





PARCEL	INSTRUMENT	DATE	GRANTOR	GRANTEE	RECORDED	REMARK
A, B	W.D.O.E.	9-14-44	RECTOR & ANNIE LAPAN	ST OF VT	23 580.81	10-17-44
A, B	W.D.O.E.	1-22-45	PHILIP L. ROBERT JONES	ST OF VT	24 3-4	2-9-45



B.M. #13 SPOT ON SLAUGHTER HOUSE 42' RIGHT STA. 661+57 ELEV. 437.66  
 B.M. #14 S. 1 R. 12 ELM 25.5' RIGHT STA. 667+50 ELEV. 437.28

GEORGIA  
 F.A.P. 52(6)  
 Sheet 11 of 45 sheets