

| FED. ROAD DIST. NO. | STATE | FED. AID PROJ. NO. | FINAL SHEET NO. | TOTAL SHEETS |
|---------------------|-------|--------------------|-----------------|--------------|
| 9                   | Vt.   | 52A                | 24              | 19           |

**INDEX OF SHEETS**

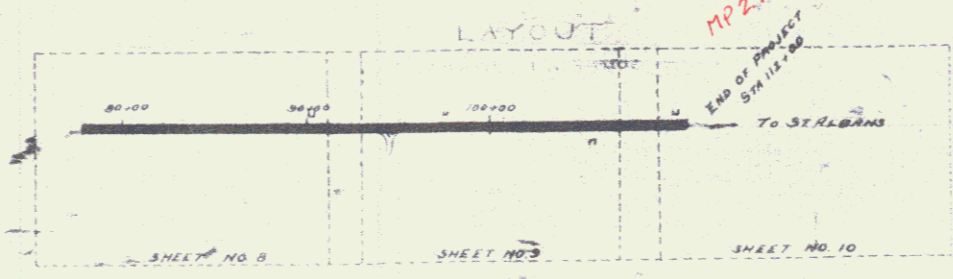
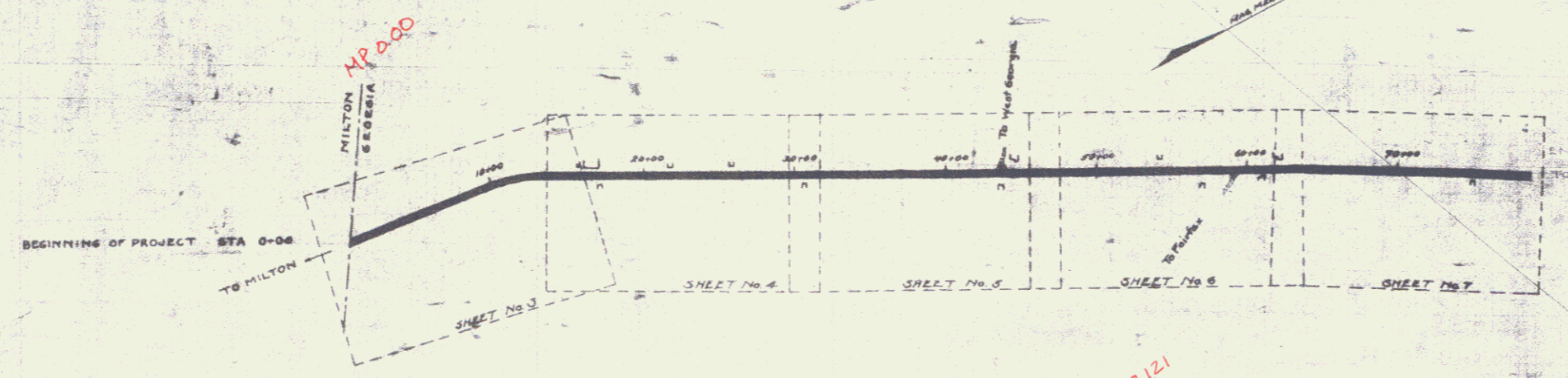
| SHEET NO. | TITLE PAGE                           | STATIONING            |
|-----------|--------------------------------------|-----------------------|
| 1         | TYPICAL CROSS-SECTION OF IMPROVEMENT | 0+00 TO STATION 10+00 |
| 2         | PLAN AND PROFILE STATION             | 0+00 TO STATION 10+00 |
| 3         |                                      | 15+00 TO 31+00        |
| 4         |                                      | 31+00 TO 47+00        |
| 5         |                                      | 47+00 TO 63+00        |
| 6         |                                      | 63+00 TO 76+76.12     |
| 7         |                                      | 76+76.12 TO 83+00     |
| 8         |                                      | 83+00 TO 93+00        |
| 9         |                                      | 93+00 TO 108+00       |
| 10        |                                      | 108+00 TO 112+00      |
| 11 TO 19  | CROSS SECTIONS                       |                       |

STATE OF VERMONT  
STATE HIGHWAY DEPARTMENT

PLAN AND PROFILE OF PROPOSED  
STATE HIGHWAY  
FEDERAL AID PROJECT

TOWN OF GEORGIA Pin# 99R426  
MILTON-ST. ALBANS ROAD US Rte. 7  
FROM MILTON TOWN LINE TO W. C. CLARK'S PLACE

SCALES  
PLAN 1" = 60'  
PROFILE, HOR. 1" = 500', VERT. 1" = 10'  
CROSS SECTIONS 1" = 3' 6"



**CONVENTIONAL SIGNS**

GROUND ELEVATION  $\frac{1}{2}$ " = 10'

GRADE ELEVATION  $\frac{1}{2}$ " = 10'

**CURVE DATA**

DEFLECTION ANGLE  $\Delta$

DEGREE OF CURVE  $D$

RADIUS OF CURVE  $R$

TANGENT DISTANCE  $T$

LENGTH OF CURVE  $L$

EXTERNAL DISTANCE  $E$

POINT OF INTERSECTION  $P.I.$

POINT OF CURVE  $P.C.$

POINT OF TANGENT  $P.T.$

LAYOUT  
SCALE 1" = 500 FEET

RECORD PLANS

RIGHT-OF-WAY DIVISION  
TOWN FILE  
PROJECT  
LOCATION  
DATE  
US 7  
(To Be Returned to R.O.W. Division)

Project No. F 52A

1/1/22

SUBMITTED BY ORDER OF THE STATE HIGHWAY BOARD  
DISTRICT ENGINEER  
CHIEF ENGINEER - BUREAU OF PUBLIC ROADS  
DIRECTOR - BUREAU OF PUBLIC ROADS  
Series F No. 52A File  
Sheet 0 of 3

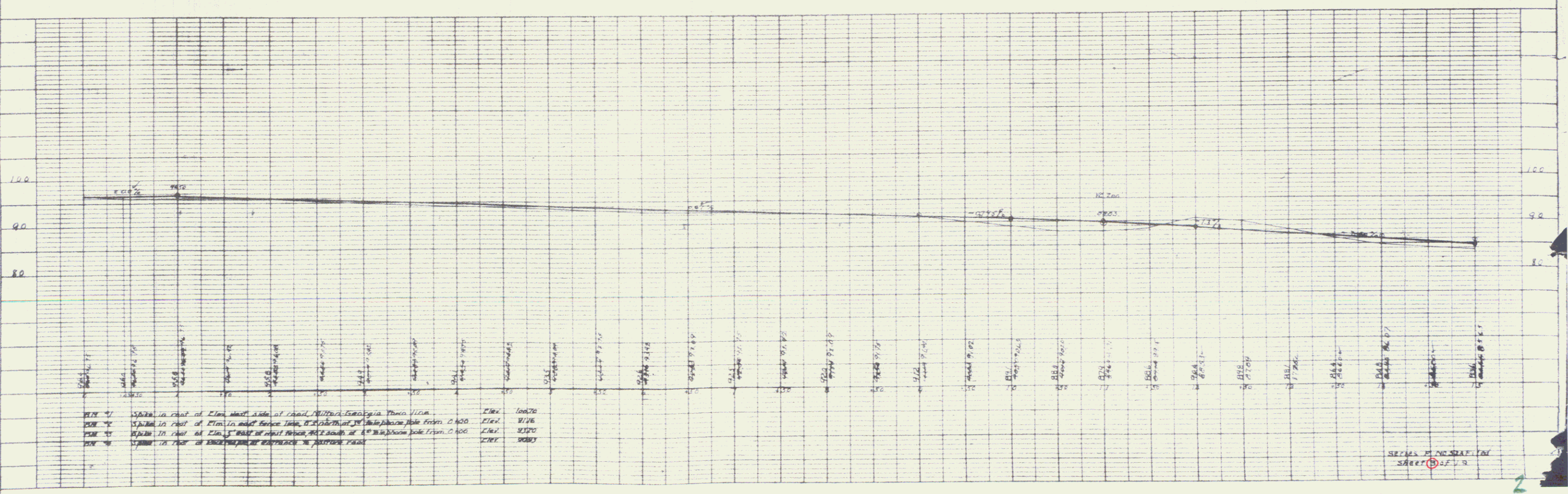
GUARD RAIL REQUIRED  
 ON LEFT  
 Sta 3+40 TO Sta 4+80 length 240'  
 12# REINFC 10#28's 240'  
 14# REINFC 10#28's 240'  
 ON RIGHT  
 Sta 3+40 TO Sta 3+84 length 240'  
 10# REINFC 10#28's 240'  
 14# REINFC 10#28's 240'  
 TOTAL THIS SHEET 1260'

NEW CULVERTS REQUIRED  
 Sta 3+88.8 24" Concrete Box Culvert  
 112.4 Concrete 4554 cu yds  
 112.5 Concrete 4473 cu yds with 57 cu yds  
 Reinforcing steel 90 lbs  
 Sta 4+10.0 24" Concrete Box Culvert  
 12.0 Concrete 4554 cu yds  
 12.5 Concrete 4473 cu yds  
 Reinforcing steel 700 lbs  
 Sta 4+74.0 15" Concrete Pipe length 80 ft  
 12.5 Concrete 4800 cu yds  
 Earth Excav 1200 cu yds

DESIGN STATE ROAD DIST. SHEET 157A  
 DIST. NO. STATE ROAD DIST. SHEET 157A  
 3 VT. 1922 3 179

PLAN  
 DATE  
 BY  
 CHECKED  
 APPROVED  
 NOTE: BOOK NUMBER CHECKED  
 BY

PROFILE  
 DATE  
 BY  
 CHECKED  
 APPROVED  
 NOTE: BOOK NUMBER CHECKED  
 BY



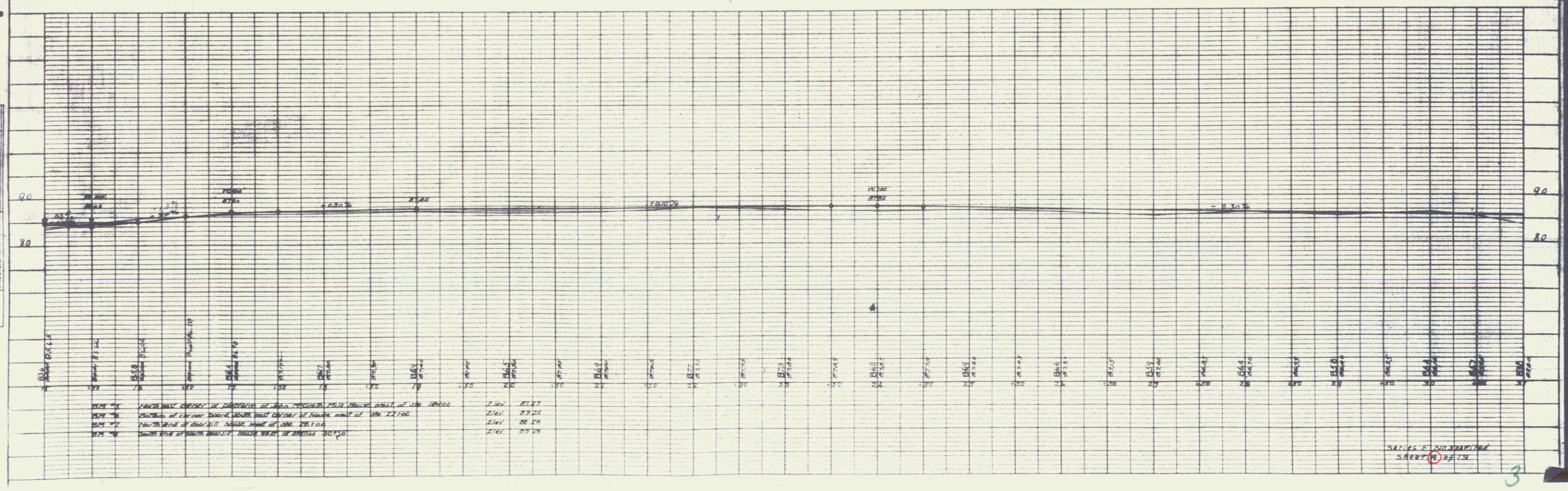
157A is that of Elm street side of road. Vertical Curve from 157A  
 157B is that of Elm street side of road. Vertical Curve from 157B  
 157C is that of Elm street side of road. Vertical Curve from 157C  
 157D is that of Elm street side of road. Vertical Curve from 157D

SEEKS IN NEW STATE  
 SHEET 157A

FIELD NO. 3  
 STATE VT  
 COUNTY WINDHAM  
 TOWN 4  
 SHEET 19

PLAN  
 DRAWN BY  
 CHECKED BY  
 DATE

PROFILE  
 DRAWN BY  
 CHECKED BY  
 DATE



SERIES 2  
 SAERT  
 3

**GUARD RAIL REQUIRED**  
 ON LEFT  
 Sta 31+20 To Sta 31+80 length 60 ft  
 ON RIGHT  
 Sta 31+20 To Sta 31+80 length 60 ft  
 TOTAL THIS SHEET 120 ft

**NEW CULVERTS REQUIRED**  
 Sta 31+30 2 x 2' Concrete Box Reinforced  
 1-2' Concrete 44 cu yds Earth Excav 41 Cu Yds.  
 1-2' 5" Reinforcing Steel 800 lbs  
 Sta 31+80 15' Concrete Pipe length 30 ft  
 1-15' 5" Concrete 15 Cu Yds

**SUB BASE REQUIRED**  
 Sta 41+00 To Sta 41+50 length 50 ft

DATE: 10/15/19  
 DRAWN BY: [Signature]

**PLAN**

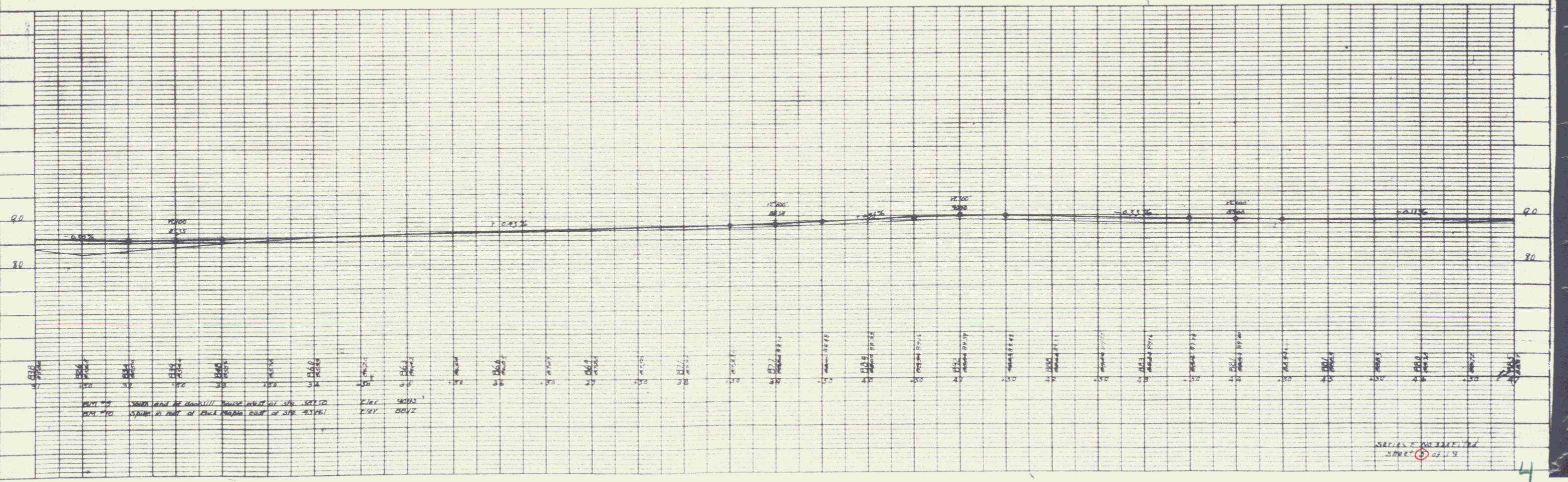
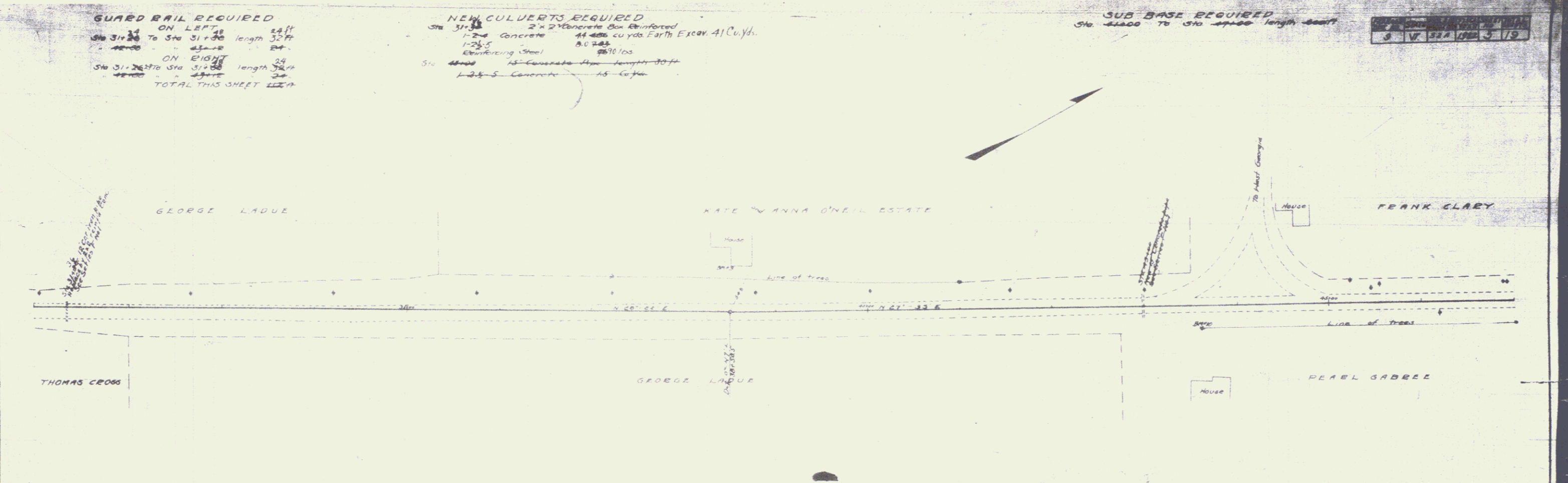
|          |  |
|----------|--|
| DATE     |  |
| BY       |  |
| CHECKED  |  |
| APPROVED |  |

NOTE: BOOK, QUANTITY CHECKED, SET OF DRAWINGS

**PROFILE**

|          |  |
|----------|--|
| DATE     |  |
| BY       |  |
| CHECKED  |  |
| APPROVED |  |

NOTE: BOOK, QUANTITY CHECKED, SET OF DRAWINGS



SCALE: 1" = 40' HORIZ. 1" = 10' VERT.



**GUARD RAIL REQUIRED**  
 14 ON LEFT  
 STA 65+00 TO STA 65+44 length 44 ft  
 70+0000 - 70+0012 - 24'  
 75+9710 - 70+0044 - 24'  
 16 ON RIGHT  
 STA 65+00 TO STA 66+10 length 110 ft  
 70+0000 - 70+0032 - 24'  
 70+0032 - 70+0056 - 24'  
 70+0056 - 70+0080 - 24'  
 TOTAL THIS SHEET 304 ft

**NEW CULVERTS REQUIRED**  
 STA 65+30 2'x2' Concrete Box Reinforced  
 1-2-4 Concrete 4.45 Cu Yds  
 Reinforcing Steel 30' @ Earth Escor. 2.6 Cu Yds  
 STA 70+00 2'x2' Concrete Box Reinforced  
 1-2-4 Concrete 4.45 Cu Yds  
 Reinforcing Steel 30' @ Earth Escor. 2.6 Cu Yds  
 STA 75+00 18" Concrete Pipe length 33.0 ft  
 1-2-4 Concrete 1.5 Cu Yds

**SUB-BASE REQUIRED**  
 STA 63+00 TO STA 71+00 length 800 ft  
 72+75 - 74+34 - 161 ft

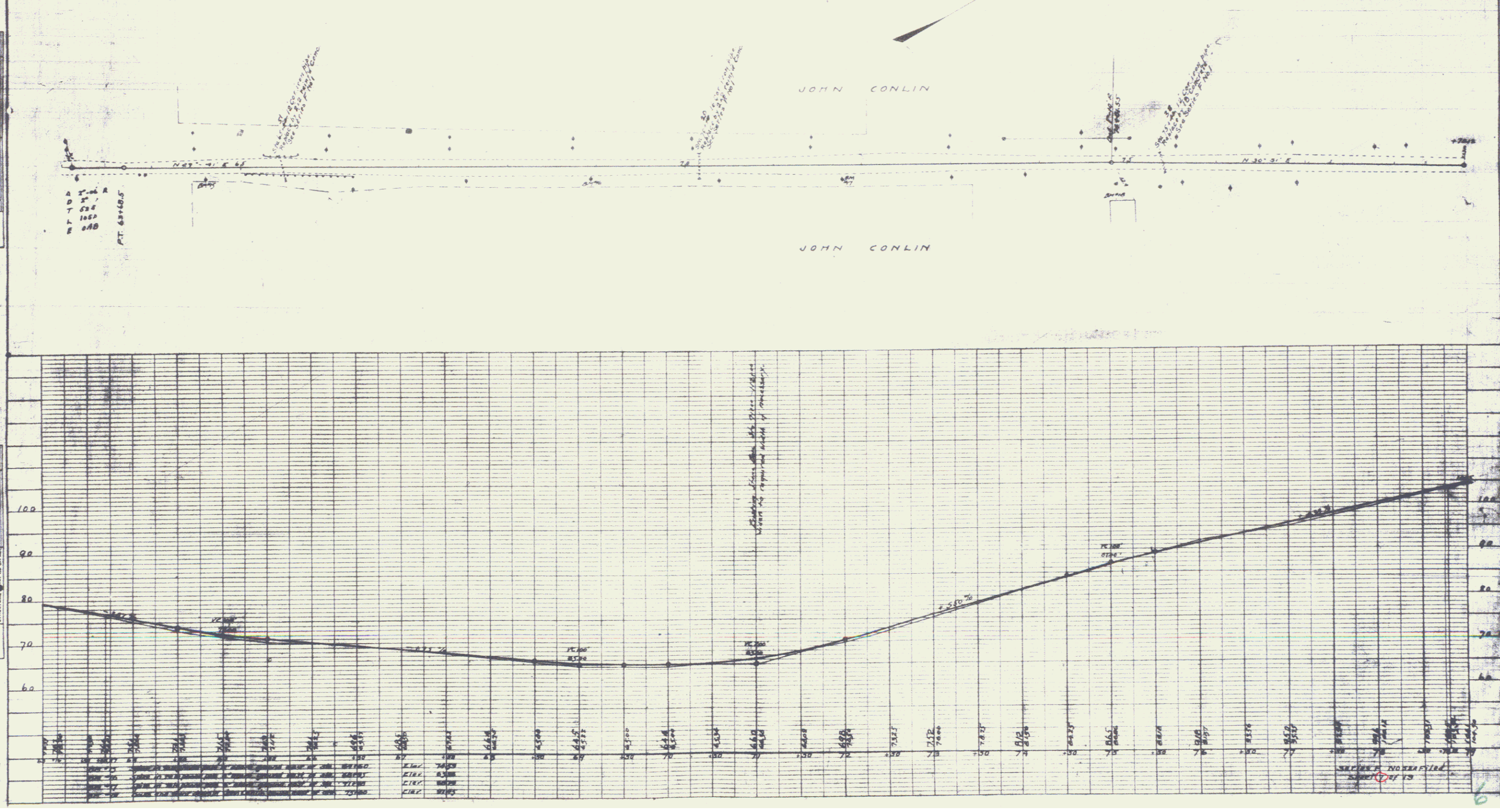
|         |          |    |         |
|---------|----------|----|---------|
| DATE    | SCALE    | BY | CHECKED |
| 9/19/24 | 1" = 40' | VF | VF      |

**PLAN**

|         |          |    |         |
|---------|----------|----|---------|
| DATE    | SCALE    | BY | CHECKED |
| 9/19/24 | 1" = 40' | VF | VF      |

**PROFILE**

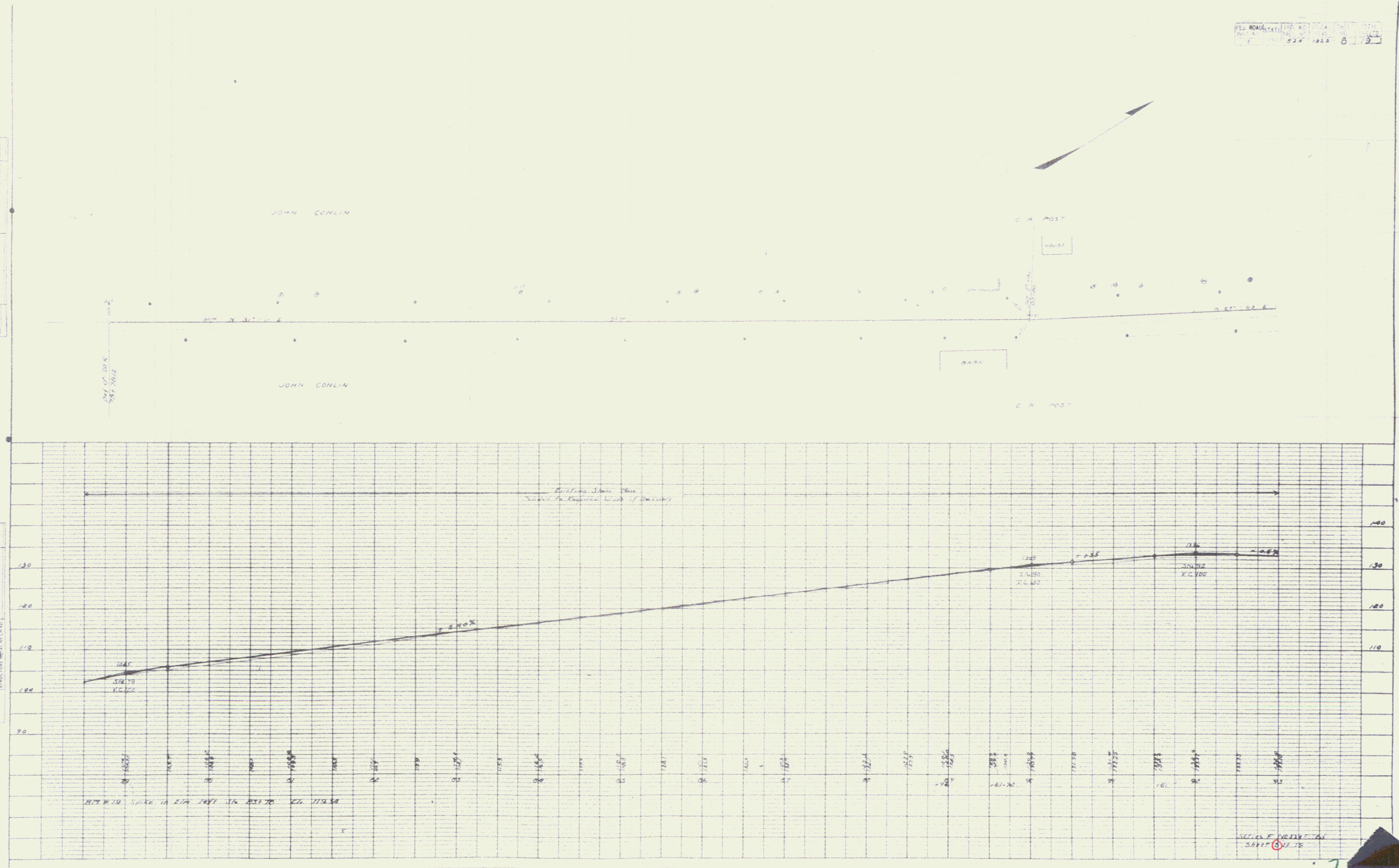
|         |          |    |         |
|---------|----------|----|---------|
| DATE    | SCALE    | BY | CHECKED |
| 9/19/24 | 1" = 40' | VF | VF      |



6

PLAN  
 DATE: 11-1-2012  
 DRAWN BY: [Name]  
 CHECKED BY: [Name]

PROFILE  
 DATE: 11-1-2012  
 DRAWN BY: [Name]  
 CHECKED BY: [Name]



SECTION PROFILE  
 DATE: 11-1-2012

**GUARD RAIL REQUIRED**

**ON LEFT**

|           |              |        |      |
|-----------|--------------|--------|------|
| Sta 83+48 | To Sta 83+51 | Length | 24ft |
| 83+84.78  | 84+06.02     | 24ft   |      |
| 85+85     | 86+03        | 24ft   |      |
| 105+08.91 | 106+02.16    | 24ft   |      |

**ON RIGHT**

|              |                 |        |      |
|--------------|-----------------|--------|------|
| Sta 93+29.30 | To Sta 93+38.54 | Length | 24ft |
| 93+28.78     | 93+56.14        | 24ft   |      |
| 96+59        | 96+03           | 24ft   |      |
| 105+08.91    | 106+02.16       | 24ft   |      |

**NEW CULVERTS REQUIRED**

Sta 98+71 12" Concrete Pipe Length 12ft  
 1-2-4 Concrete 1.5 Cu Yds  
 Earth Excav 1.0 Cu Yd

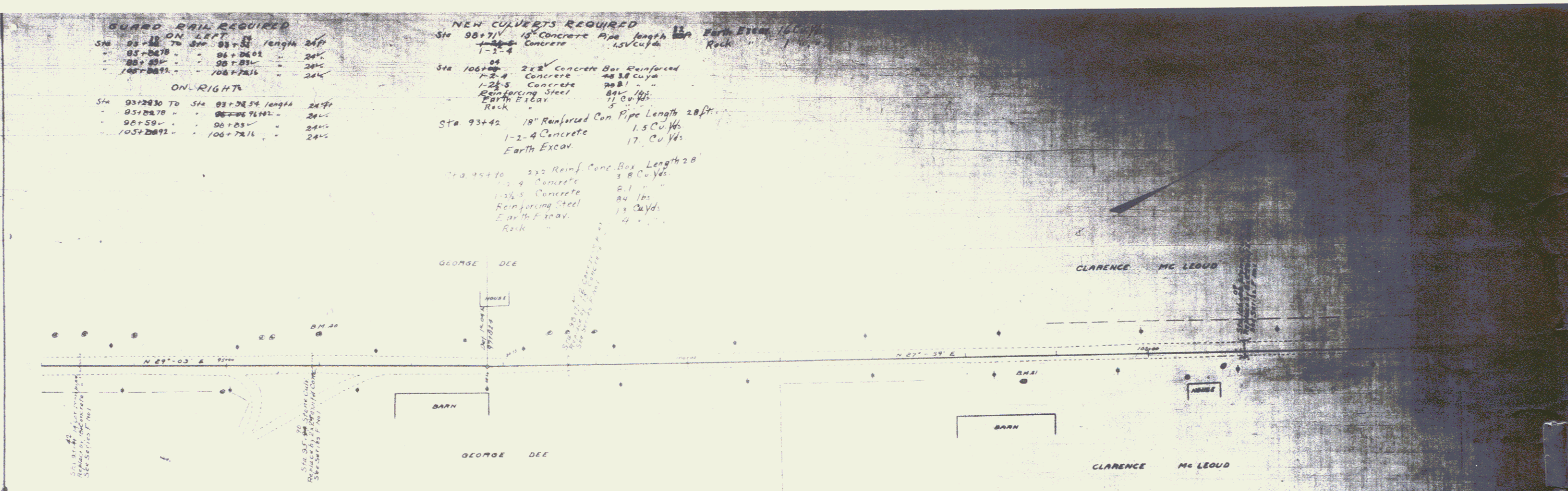
Sta 106+00 2x2 Concrete Box Reinforced  
 1-2-4 Concrete 48.38 Cu Yds  
 1-2-4 Concrete 20.81 " "  
 Reinforcing Steel 84 lbs  
 Earth Excav 11 Cu Yds  
 Rock 5

Sta 93+42 18" Reinforced Con Pipe Length 20ft  
 1-2-4 Concrete 1.5 Cu Yds  
 Earth Excav 17 Cu Yds

Sta 94+70 24" Reinf Conc Box Length 20  
 1-2-4 Concrete 3.8 Cu Yds  
 1-2-4 Concrete 2.1 " "  
 Reinforcing Steel 84 lbs  
 Earth Excav 13 Cu Yds  
 Rock 4

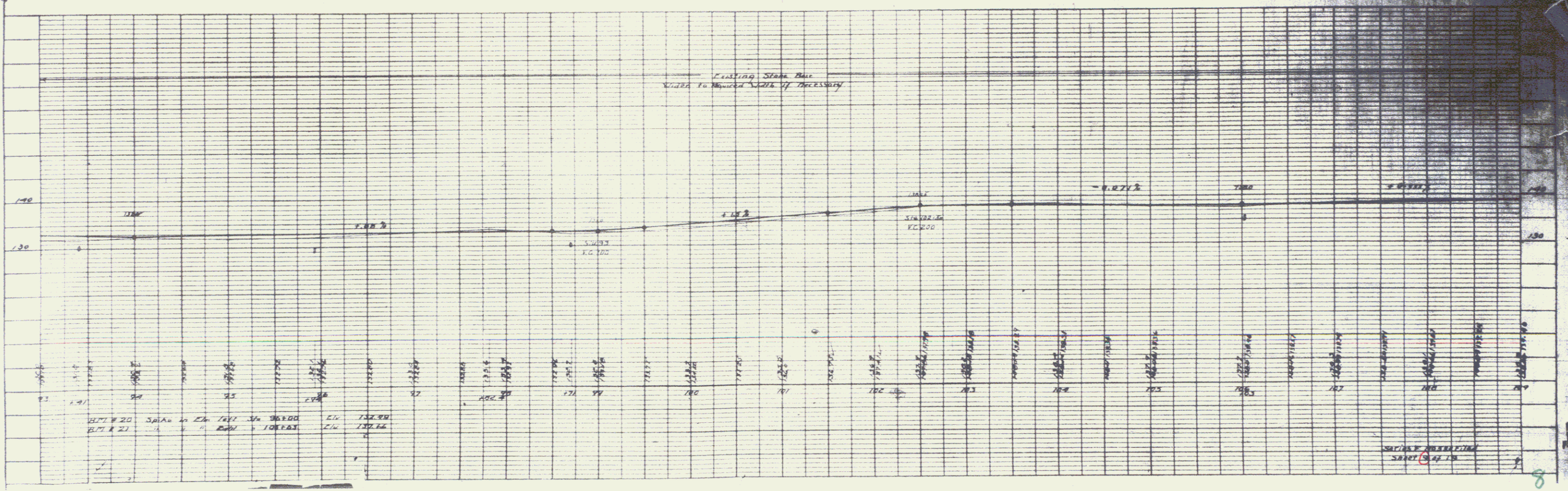
**PLAN**

DESIGNED BY: [Signature]  
 PLOTTED BY: [Signature]  
 CHECKED BY: [Signature]  
 DATE: [Date]



**PROFILE**

DESIGNED BY: [Signature]  
 PLOTTED BY: [Signature]  
 CHECKED BY: [Signature]  
 DATE: [Date]

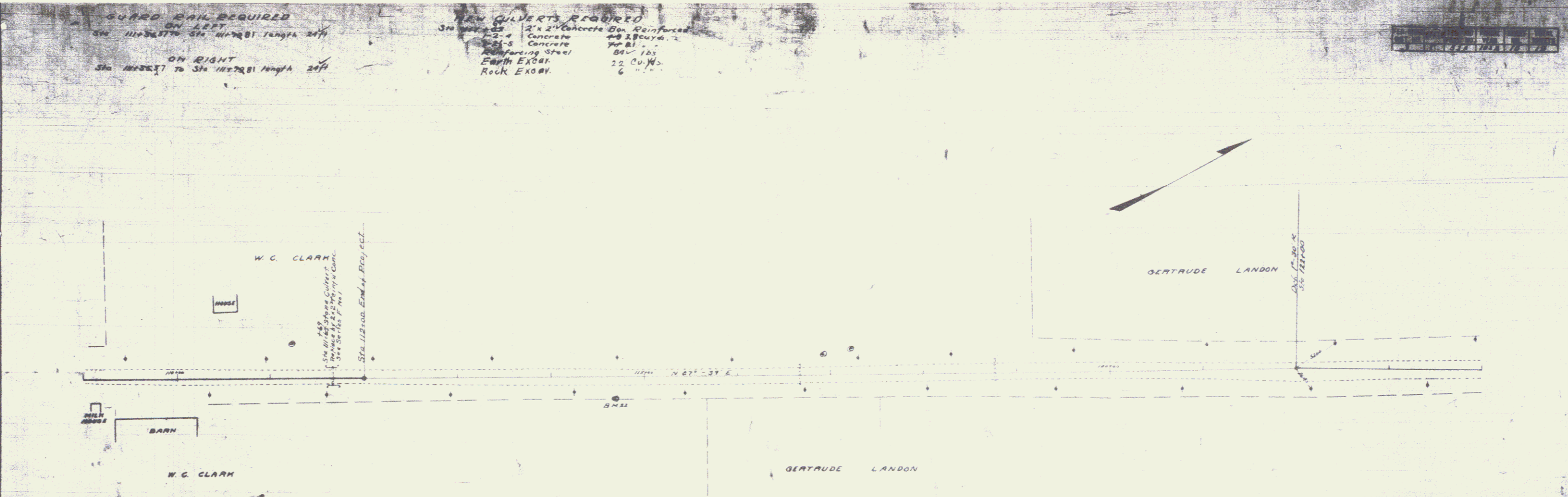


GUARD RAIL REQUIRED  
 ON LEFT  
 STA 1142+00 TO STA 1142+81 LENGTH 81'  
 ON RIGHT  
 STA 1142+87 TO STA 1142+81 LENGTH 6'  
 20'

NEW GILVERTS REQUIRED  
 STA 1142+82 TO STA 1142+87  
 2' x 2' Concrete Box Reinforced  
 Concrete #8 12cu yds.  
 #4 81' -  
 Reinforcing Steel 84' 105'  
 Depth EXC 22 CU YS.  
 Rock EXC 6'

DATE: 11/17/00  
 DRAWN BY: [illegible]  
 CHECKED BY: [illegible]

PLAN  
 SHEET NO. 10  
 PROJECT NO. 03-000000  
 DATE: 11/17/00  
 DRAWN BY: [illegible]  
 CHECKED BY: [illegible]



PROFILE  
 SHEET NO. 11  
 PROJECT NO. 03-000000  
 DATE: 11/17/00  
 DRAWN BY: [illegible]  
 CHECKED BY: [illegible]

