

INDEX OF SHEETS

STATE OF VERMONT DEPARTMENT OF HIGHWAYS PROPOSED IMPROVEMENT

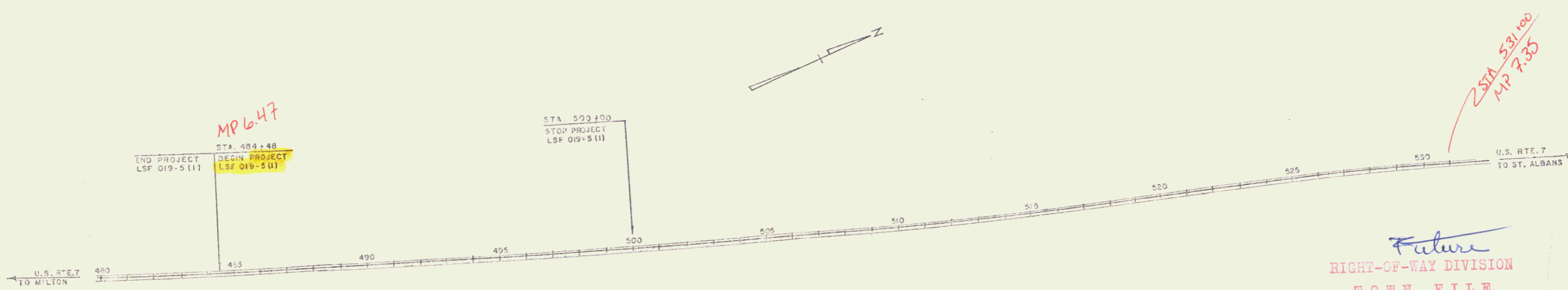
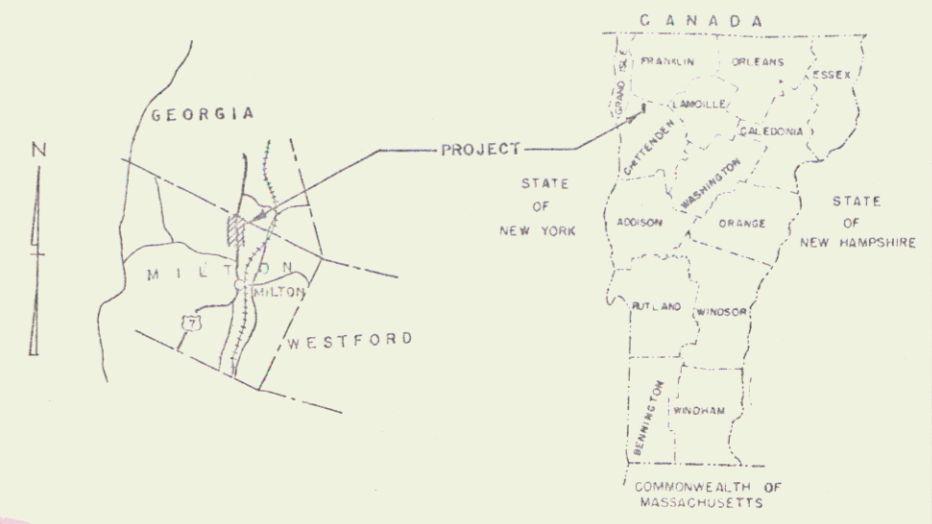
TOWN OF MILTON COUNTY OF CHITTENDEN BURLINGTON - ST. ALBANS ROAD - U.S. ROUTE 7

BEGINNING AT A POINT 1.364 MILES SOUTH OF THE MILTON - GEORGIA
TOWN LINE AND EXTENDING NORTHERLY FOR A DISTANCE OF 294

Pin # 99R 425

LENGTH OF PROJECT 1,552.32 FEET = 0.294 MILE

FED. ROAD DISTRICT NO.	STATE	PROJECT NO.	DATE	SHEET NO.	TOTAL SHEETS
1	VT	019-5(11)	6/2/66	1	3



Future
RIGHT-OF-WAY DIVISION
TOWN FILE
PERPETUAL
Town of US7
(To Be Returned To R.W. Division)

*2 STA 539+00
MP 7.35*

CONVENTIONAL SIGNS

COUNTY LINE	---
TOWN LINE	---
FENCE LINE	---
STONE WALL	---
UNFENCED PROPERTY	---
GUARD RAIL	---
TRAVELED WAY	---
RAILROAD	---
RETAINING WALL	---
CENTER LINE	---
SURVEY LINE	---
CULVERT	---
DROP INLET	---
TROLLEY POLE	---
POWER POLE	---
TELEPHONE POLE	---
TREES	---
MEDEE	---

GROUND ELEVATION	DATE	LINE
GRADE ELEVATION	DATE	LINE
CURVE DATA		
DEFLECTION OF ANGLE	Δ	
DEGREE OF CURVE	D	
RADIUS OF CURVE	R	
TANGENT DISTANCE	T	
LENGTH OF CURVE	L	
EXTERNAL DISTANCE	E	
POINT OF INTERSECTION	P.I.	
POINT OF CURVE	P.C.	
POINT OF TANGENT	P.T.	
POINT ON TANGENT	P.O.T.	
POINT ON SUB-TANGENT	POST	

SCALES

TITLE	1" = 200'
TYPICAL	1" = 20'
PLAN	1" = 50'
PROFILE HORIZONTAL	1" = 100'
PROFILE VERTICAL	1" = 10'
CROSS-SECTIONS	1" = 10'

THESE PLANS ARE SUBJECT TO SUCH REVISIONS AS MAY BE REQUIRED BY THE BUREAU OF PUBLIC ROADS OR THE COMMISSIONER OF HIGHWAYS.

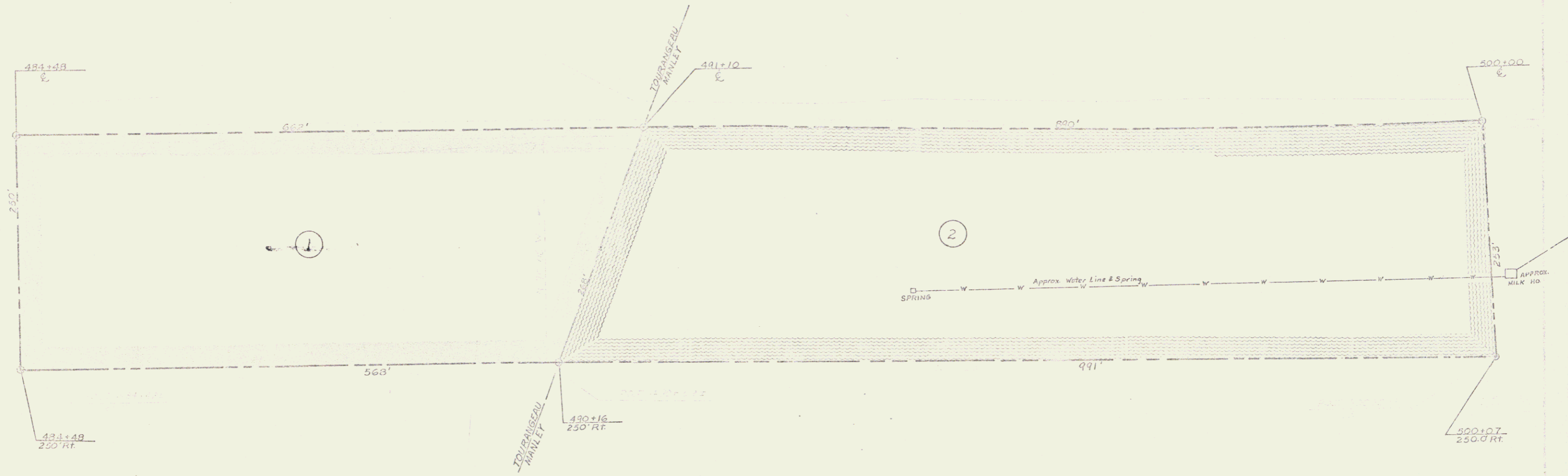
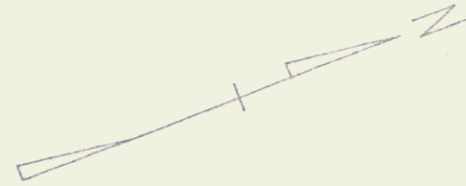
CONSTRUCTION IS TO BE CARRIED ON IN ACCORDANCE WITH THESE PLANS AND THE STANDARD SPECIFICATIONS FOR HIGHWAY AND BRIDGE CONSTRUCTION DATED APRIL, 1964, AS APPROVED BY THE BUREAU OF PUBLIC ROADS ON OCTOBER 12, 1964 INCLUDING ALL SUBSEQUENT APPROVED REVISIONS AND SUCH REVISED SPECIFICATIONS AND SPECIAL PROVISIONS AS ARE INCORPORATED IN THESE PLANS.

DEPARTMENT OF COMMERCE
BUREAU OF PUBLIC ROADS

APPROVED _____ DATE _____
DIVISION ENGINEER

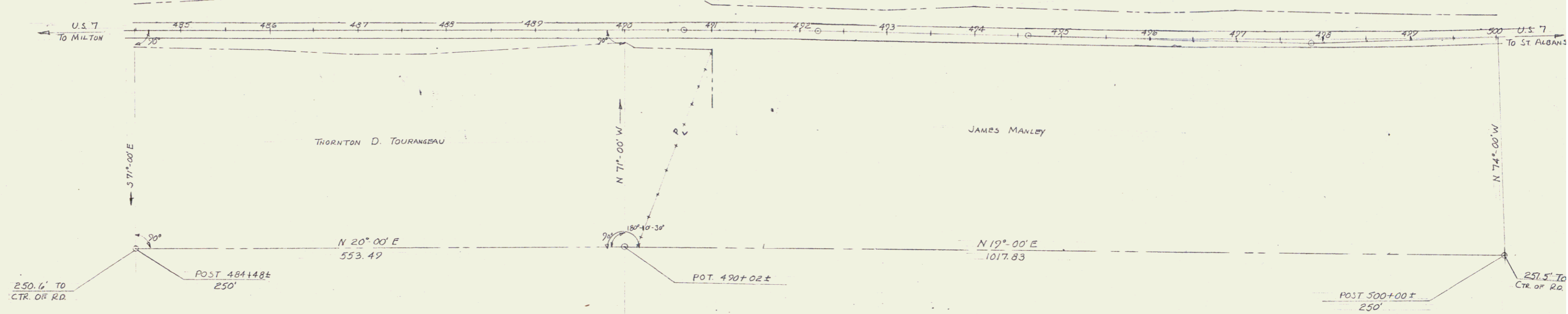
PROJECT LSF NO. 019-5(11)
SHEET 1 OF 3 SHEETS

APPROVED <i>E. J. St. Aubin</i> ASST. CHIEF ENGINEER DATE 6/2/66	APPROVED <i>J. P. ...</i> DISTRICT ENGINEER DATE 6/3/66	APPROVED <i>J. W. ...</i> DISTRICT ENGINEER DATE May 21, 1966	APPROVED _____ DISTRICT ENGINEER DATE _____	APPROVED <i>J. W. ...</i> DISTRICT ENGINEER DATE 5/21/66	APPROVED <i>...</i> CHIEF ENGINEER DATE 6/2/66
--	---	---	---	--	--



25' 50' 100' 150'
SCALE

VERMONT DEPARTMENT OF HIGHWAYS
RIGHT-OF-WAY PLANS
PROJECT MILTON
NO. USE 019-3-11
SHEET 2 OF 3



MILTON
 LSF 019-5(1)
 SCENIC STRIP
 Scale 1" = 50'

SHEET (2)

3

