

INDEX OF SHEETS

# STATE OF VERMONT DEPARTMENT OF HIGHWAYS PROPOSED IMPROVEMENT

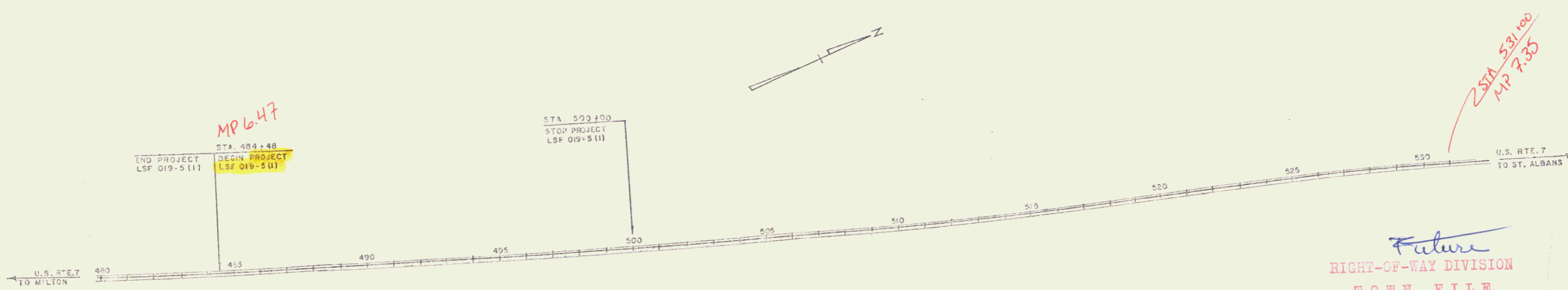
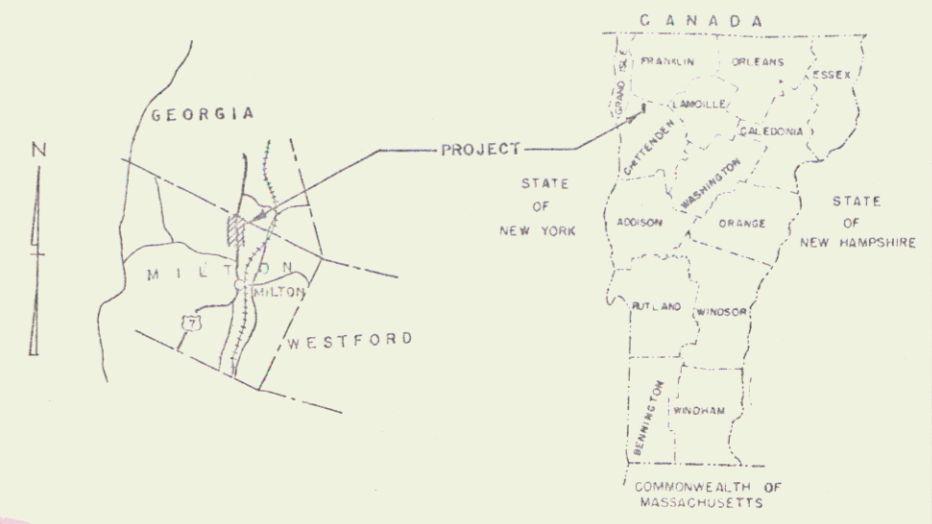
## TOWN OF MILTON COUNTY OF CHITTENDEN BURLINGTON - ST. ALBANS ROAD - U.S. ROUTE 7

BEGINNING AT A POINT 1.364 MILES SOUTH OF THE MILTON - GEORGIA  
TOWN LINE AND EXTENDING NORTHERLY FOR A DISTANCE OF 294

Pin # 99R 425

LENGTH OF PROJECT 1,552.32 FEET = 0.294 MILE

FED. ROAD DISTRICT NO.	STATE	PROJECT NO.	DATE	SHEET NO.	TOTAL SHEETS
1	VT	019-5111	6/2/66	1	3



*Future*  
RIGHT-OF-WAY DIVISION  
TOWN FILE  
PERPETUAL  
Town of US7  
(To Be Returned To R.W. Division)

*251A 539/100  
MP 7.35*

- CONVENTIONAL SIGNS
- COUNTY LINE
  - TOWN LINE
  - FENCE LINE
  - STONE WALL
  - UNFENCED PROPERTY
  - GUARD RAIL
  - TRAVELED WAY
  - RAILROAD
  - RETAINING WALL
  - CENTER LINE
  - SURVEY LINE
  - CULVERT
  - DROP INLET
  - TROLLEY POLE
  - POWER POLE
  - TELEPHONE POLE
  - TREES
  - MEDEE

- GROUND ELEVATION DATUM TO LINE
- GRADE ELEVATION DATUM TO LINE
- CURVE DATA
- DEFLECTION OF ANGLE . . . . . Δ
  - DEGREE OF CURVE . . . . . D
  - RADIUS OF CURVE . . . . . R
  - TANGENT DISTANCE . . . . . T
  - LENGTH OF CURVE . . . . . L
  - EXTERNAL DISTANCE . . . . . E
  - POINT OF INTERSECTION . . . . . P.I.
  - POINT OF CURVE . . . . . P.C.
  - POINT OF TANGENT . . . . . P.T.
  - POINT ON TANGENT . . . . . P.O.T.
  - POINT ON SUB-TANGENT . . . . . P.O.S.T.

- SCALES
- TITLE . . . . . 1" = 200'
  - TYPICAL . . . . . 1" = 20'
  - PLAN . . . . . 1" = 50'
  - PROFILE HORIZONTAL . . . . . 1" = 50'
  - PROFILE VERTICAL . . . . . 1" = 10'
  - CROSS-SECTIONS . . . . . 1" = 10'

THESE PLANS ARE SUBJECT TO SUCH REVISIONS AS MAY BE REQUIRED BY THE BUREAU OF PUBLIC ROADS OR THE COMMISSIONER OF HIGHWAYS.

CONSTRUCTION IS TO BE CARRIED ON IN ACCORDANCE WITH THESE PLANS AND THE STANDARD SPECIFICATIONS FOR HIGHWAY AND BRIDGE CONSTRUCTION DATED APRIL, 1964, AS APPROVED BY THE BUREAU OF PUBLIC ROADS ON OCTOBER 12, 1964 INCLUDING ALL SUBSEQUENT APPROVED REVISIONS AND SUCH REVISED SPECIFICATIONS AND SPECIAL PROVISIONS AS ARE INCORPORATED IN THESE PLANS.

DEPARTMENT OF COMMERCE  
BUREAU OF PUBLIC ROADS

APPROVED \_\_\_\_\_ DATE \_\_\_\_\_

DIVISION ENGINEER

PROJECT LSF NO. 019-5111

SHEET 1 OF 3 SHEETS

APPROVED <i>E.P. Stacey</i> ASST. CHIEF ENGINEER DATE 6/2/66	APPROVED <i>J.P. French</i> DISTRICT ENGINEER DATE 6/3/66	APPROVED <i>W.R. Goodhart</i> DISTRICT ENGINEER DATE May 21, 1966	APPROVED _____ DISTRICT ENGINEER DATE _____	APPROVED <i>J.W. Lane</i> DISTRICT ENGINEER DATE 5/21/66	APPROVED <i>Bill Candel</i> CHIEF ENGINEER DATE 6/2/66
--	---	---	---	--	--