

**WOOD GUIDED ONLY REQUIRED**

Station	Left	Right
209+83-209+88	244'	244'
217+19-217+43	246'	246'

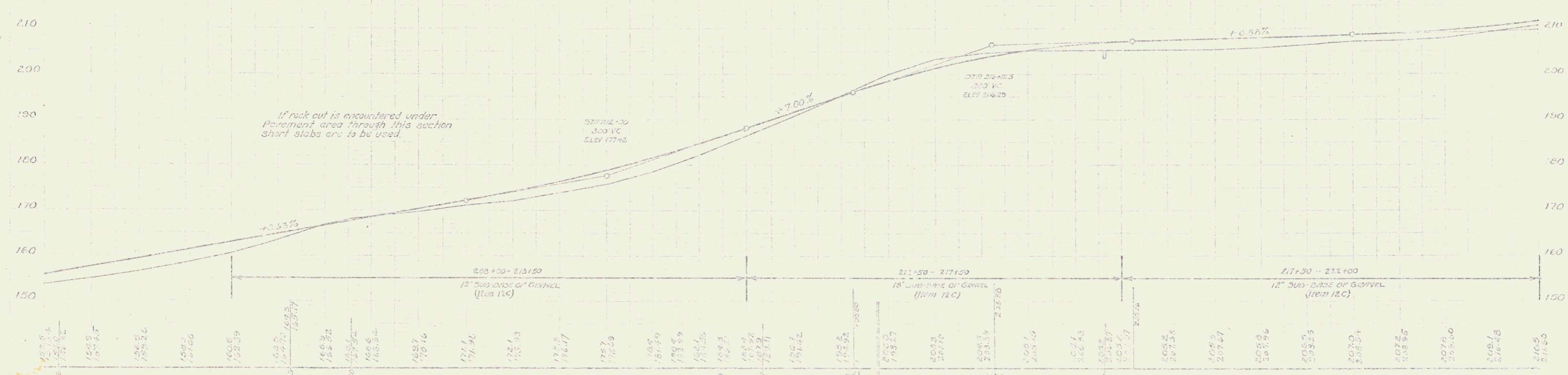
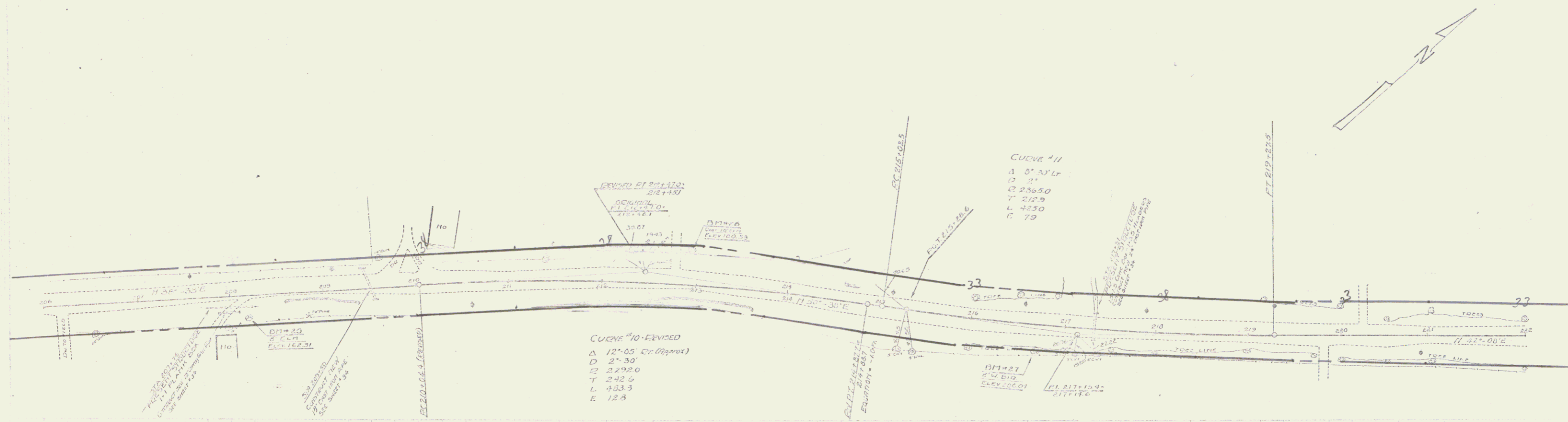
**NEW DRAINAGE DITCH REQUIRED**

Station	Left	Right
209+83-209+88	244'	244'
217+19-217+43	246'	246'

**NEW CAST IRON PIPE COLLECTOR REQUIRED**

Station	Left	Right
209+83-209+88	244'	244'
217+19-217+43	246'	246'

DATE	10-2-54
BY	...
CHECKED	...
SCALE	1" = 40'



209+83 - 209+88  
 217+19 - 217+43

12" SUB-DRAIN OF GUTTER (Item 12C)  
 18" SUB-DRAIN OF GUTTER (Item 12C)  
 12" SUB-DRAIN OF GUTTER (Item 12C)

DN #25 SPIKE IN TANK 10" DIA. OF STA 209+83 - ELEV 162.31  
 DN #26 SPIKE IN TANK 12" DIA. OF STA 212+19 - ELEV 170.23  
 DN #27 SPIKE IN TANK 8" DIA. OF STA 216+42 - ELEV 166.09

SHEET 10 OF 34