

INDEX OF SHEETS

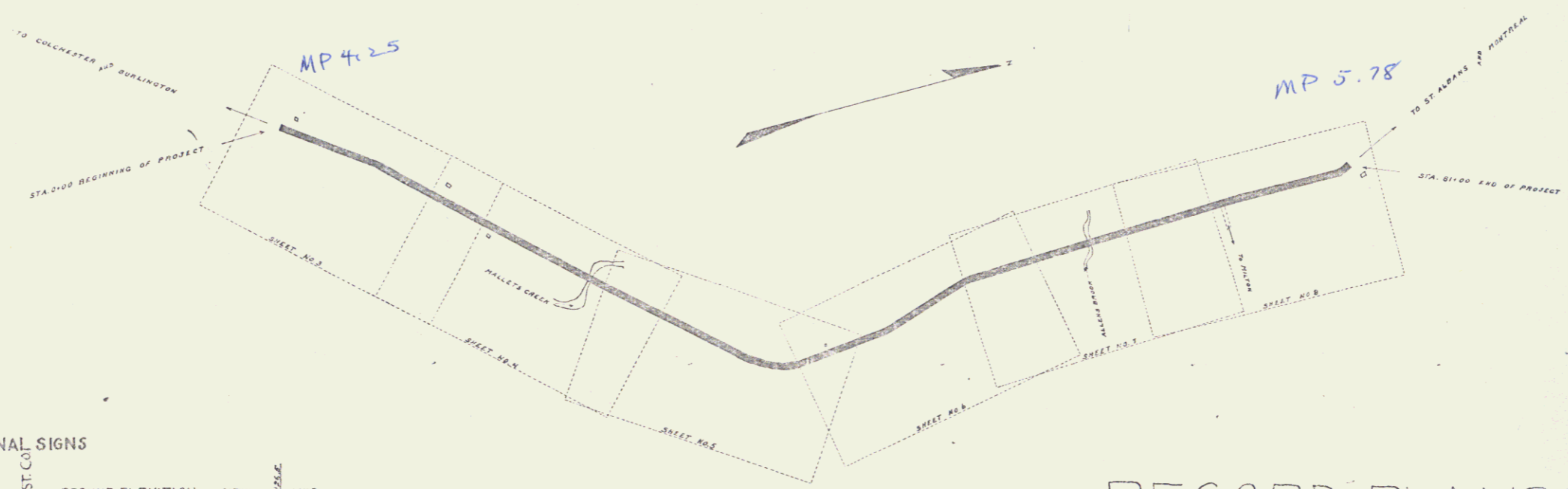
SHEET NO	TITLE PAGE
2	TYPICAL CROSS-SECTION OF IMPROVEMENT
3	PLAN AND PROFILE STA. 0+00 TO STA. 14+00
4	" " " " 14+00 " " 28+00
5	" " " " 28+00 " " 42+00
6	" " " " 42+00 " " 56+00
7	" " " " 56+00 " " 68+00
8	" " " " 68+00 " " 81+00
9	BRIDGE STA. 24+10
10	" " " " 81+73
11-19	CROSS-SECTIONS

FED. ROAD DIST. NO.	STATE	FED. AID PROJ. NO.	FISCAL YEAR	SHEET NO.	TOTAL SHEETS
9	V.T.	47	1922	7	13

STATE OF VERMONT  
 STATE HIGHWAY DEPARTMENT  
 PLAN AND PROFILE OF PROPOSED  
 STATE HIGHWAY  
 FEDERAL AID PROJECT  
 TOWN OF COLCHESTER **Pin # 99R 418**  
 MUNSON FLAT ROAD  
 FROM RAY COLLINS' HOUSE TO GUY DINGLER'S HOUSE



PLAN 1 IN. = 50 FEET  
 PROFILE 1/8 IN. = 5 FEET VERTICAL = 10 FEET  
 CROSS SECTIONS 1 IN. = 5 FEET



**Rte. US 7**

NOTE: ANY FURTHER CORRECTIONS TO THE FINAL QUALITY CHECK SHOULD BE MADE RELATIVE TO THIS QUALITY CHECK SHEET. EITHER THE FIELD CORPS OR THE DESIGNER FILE.

CONVENTIONAL SIGNS

COUNTY LINE	---	GROUND ELEVATION	-----
TOWN LINE	----	GRADE ELEVATION	-----
FENCE LINE	-----		
STONE WALL	-----		
UNFENCED PROPERTY	-----		
GUARD RAIL	-----		
TRAVELED WAY	-----		
RAILROAD	-----		
RETAINING WALL	-----		
CENTER & SURVEY LINE	-----		
CULVERT	-----		
DROP INLET	-----		
TROLLEY POLE	-----		
POWER POLE	-----		
TELEPHONE POLE	-----		
TREES	-----		
HEDGE	-----		

COLCHESTER ROAD CONST. CO.  
 RECORD PLANS  
 YEAR: 1924

DEFLECTION ANGLE	Δ
DEGREE OF CURVE	D.
RADIUS OF CURVE	R.
TANGENT DISTANCE	T.
LENGTH OF CURVE	L.
EXTERNAL DISTANCE	E.
POINT OF INTERSECTION P.I.	P. I.
POINT OF CURVE	P. C.
POINT OF TANGENT	P. T.

RECORD PLANS

**Project No. F.A.P. 41**

SUBMITTED BY ORDER OF THE STATE HIGHWAY BOARD

CHIEF ENGINEER DEPARTMENT OF HIGHWAYS

RECOMMENDED

DISTRICT ENGINEER BUREAU OF PUBLIC ROADS

RECOMMENDED FOR APPROVAL

CHIEF ENGINEER BUREAU OF PUBLIC ROADS

APPROVED

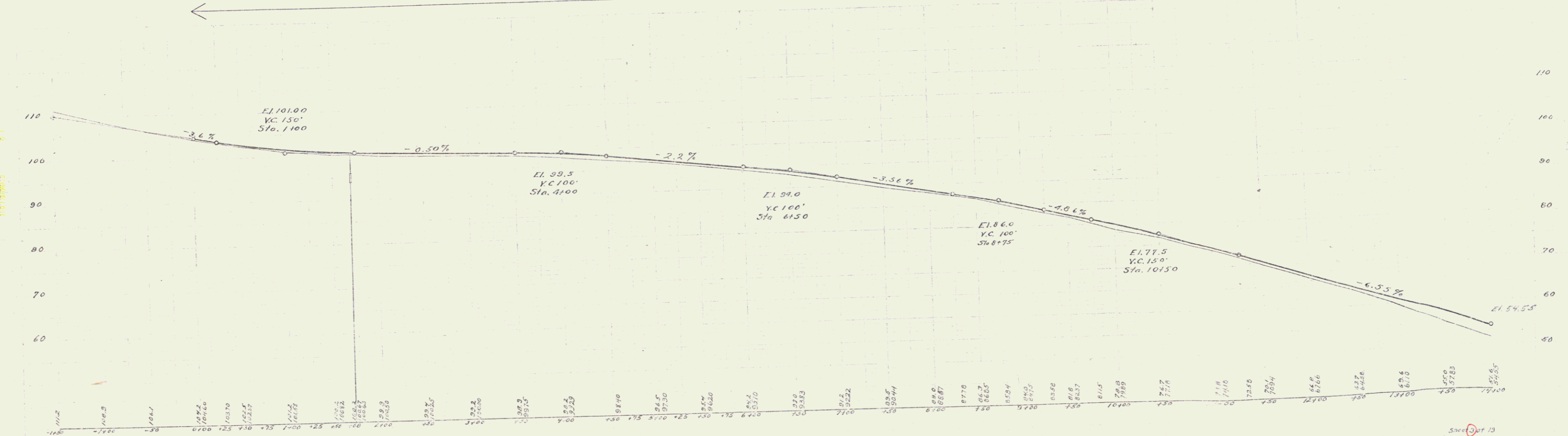
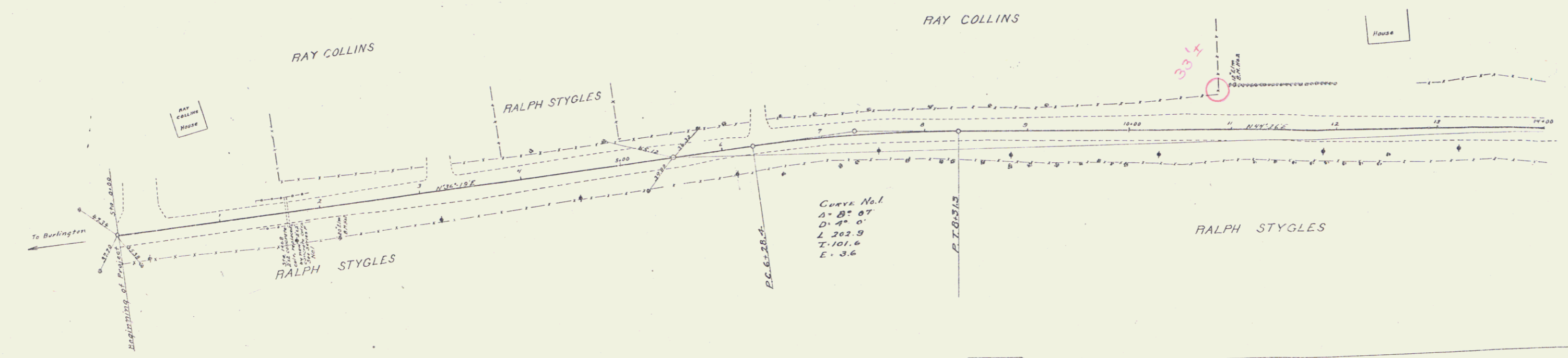
DIRECTOR BUREAU OF PUBLIC ROADS

1/1/22  
 STEARNS R. JENKINS  
 Series F 41-41 filed  
 1/1/22

FED. ROAD DIST. NO.	STATE	FED. ROAD PROJ. NO.	SHEET NO.	TOTAL SHEETS
9	VT	47	1022	3

**GUARD RAIL REQUIRED**  
 ON RIGHT  
 Sta. 1150 to Sta. 1400 Length 250 ft.  
 ON LEFT  
 Sta. 1150 to Sta. 1400 Length 24 ft.  
 TOTAL THIS SHEET 48 FT.

**NEW CULVERTS REQUIRED**  
 Sta. 1160 2'x2' Concrete 72 cu. yds.  
 1-2-4 Concrete 82  
 1-2-5 Concrete 302 cu. yds.



D.M. No. 1 Spike in 20' Elm Right of Sta. 1160 Elev. 100.00  
 D.M. No. 2 Spike in 12' Elm Left of Sta. 1160 Elev. 76.08

**GUARD RAIL REQUIRED ON LEFT**

Sta. 15+21 to 15+45	Length	24 FT.
23+88		24
24+27		24

**ON RIGHT**

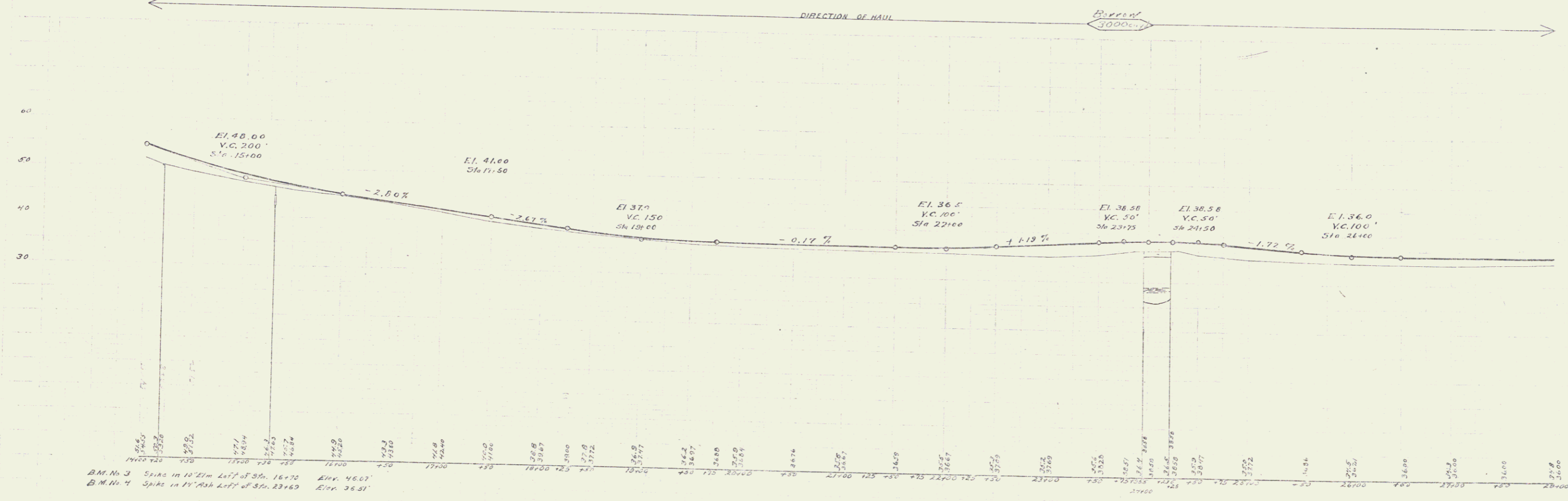
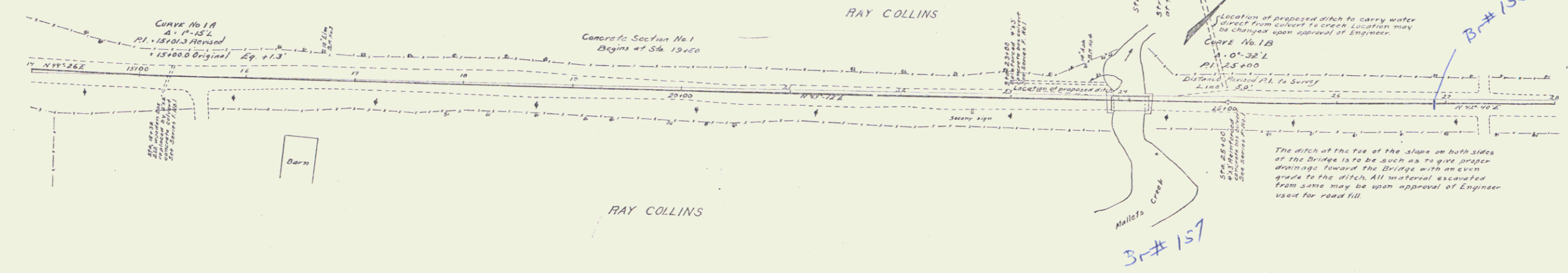
Sta. 15+44 to 15+50	Length	24 FT.
22+89		24
24+27		24

TOTAL ON THIS SHEET 192 FT.

**NEW CULVERTS REQUIRED**

Sta. 15+22	2'x2' Concrete	6.5
	1-2-4 Concrete	7.0
	1-2-5 Concrete	7.0
Sta. 23+00	4'x3' Reinforced Concrete	7.8
	1-2-4 Concrete	7.8
	1-2-5 Concrete	12.4
	Reinforcing Steel	250 lbs
Sta. 25+00	4'x3' Reinforced Concrete	7.8
	1-2-4 Concrete	7.8
	1-2-5 Concrete	12.4
	Reinforcing Steel	250 lbs

PER. POND DIST. AD.	STAFF	PER. POND DIST. AD.	PER. POND DIST. AD.	PER. POND DIST. AD.	PER. POND DIST. AD.
9	VT	4	4	4	4



B.M. No. 3 Spike in 10' Elm Left of Sta. 16+70 Elev. 46.07'  
 B.M. No. 4 Spike in 10' Elm Left of Sta. 23+60 Elev. 36.51'

**GUARD RAIL REQUIRED**  
 ON LEFT  
 Sta 27+78 to Sta 28+22 Length 24ft  
 - 30+88 - - 31+12 - 24ft  
 ON RIGHT  
 Sta 27+98 to Sta 28+22 Length 24ft  
 - 30+88 - - 31+12 - 24ft  
 TOTAL ON THIS SHEET 96 ft.

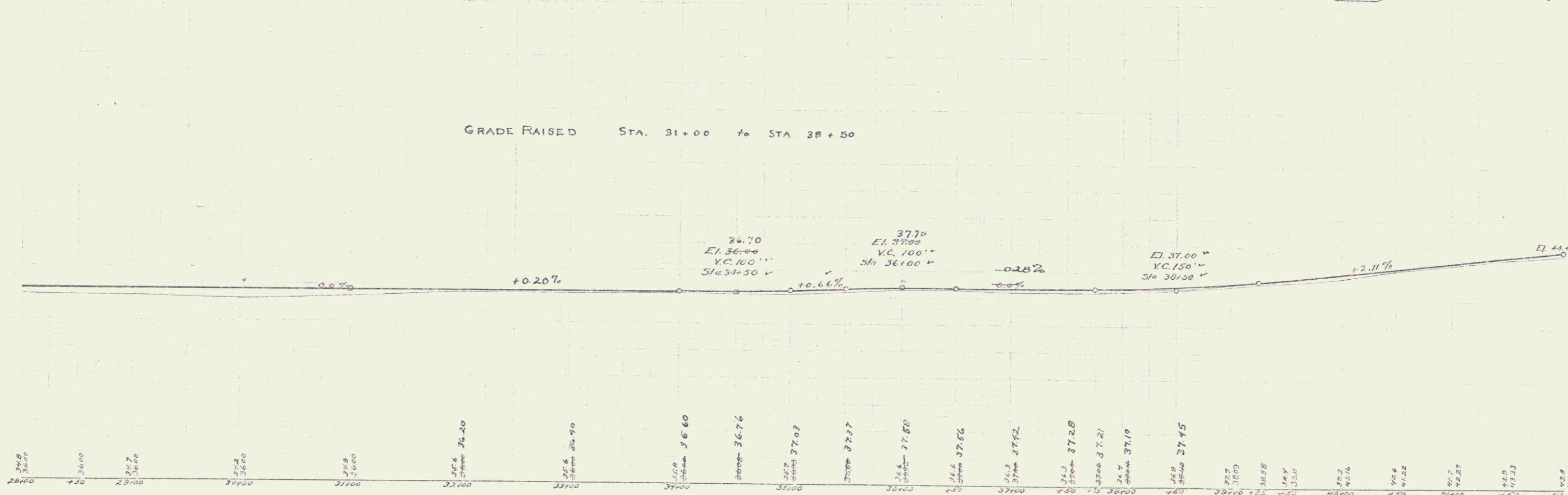
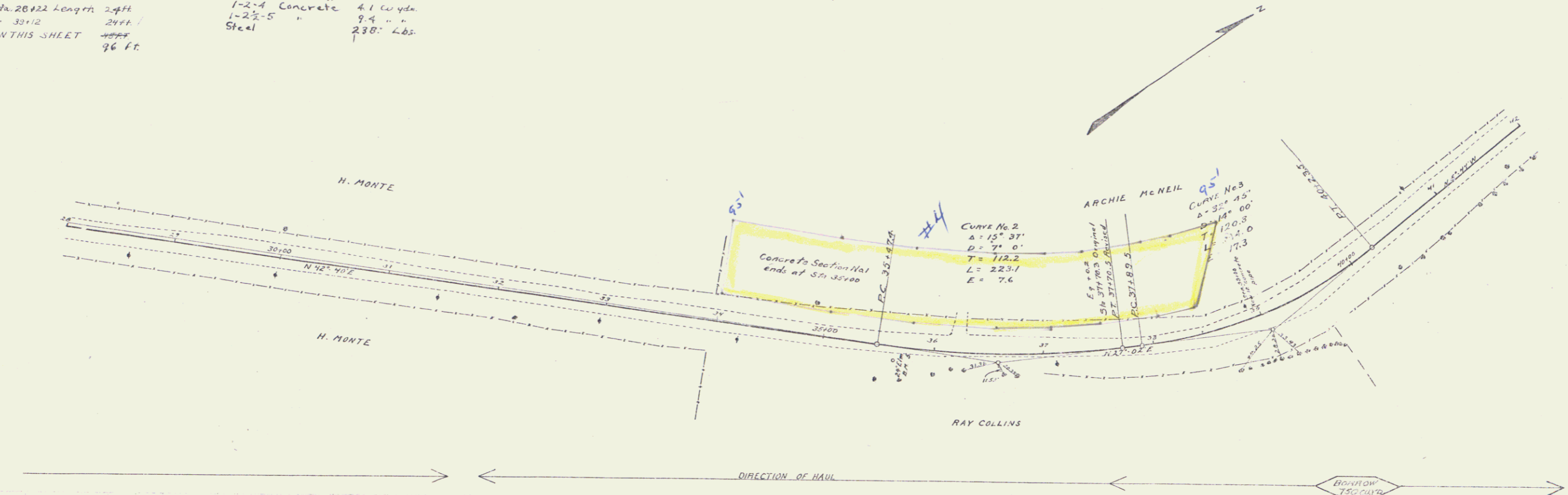
**NEW CULVERTS REQUIRED**  
 Sta 33+06 12" Concrete pipe 33 ft  
 12" Concrete 12 ft  
 Sta 28+10 4x2-9" Roof 4.1 cu yds  
 1-2x4 Concrete 9.9 " "  
 1-2x5 " 230.4 lbs  
 Steel

**STANDARD UNDERDRAIN**  
 Sta. 40+00 to Sta. 42+00 Length 200 Ft

NO.	DATE	BY	REVISION
1	5-17	AV	1/2002
2			5
3			13

All Plans to be Approved by the Engineer  
 5/15/02

All Plans to be Approved by the Engineer  
 5/15/02



B.M. No. 5 Spike in 2x4 Elm Right of Sta. 35+71 Elev. 39.83

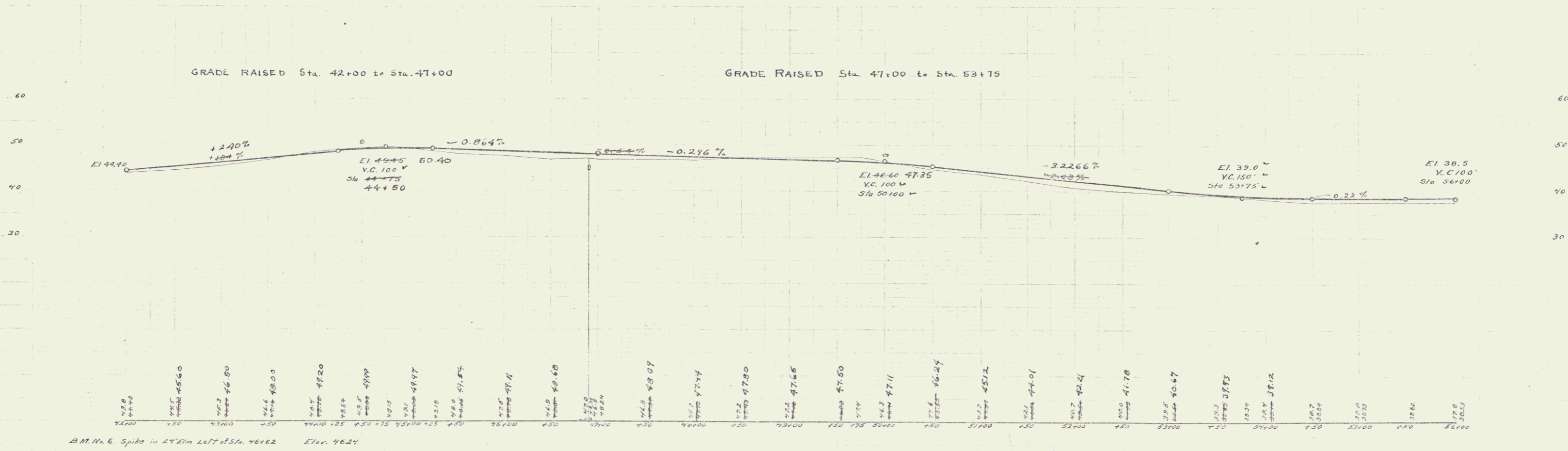
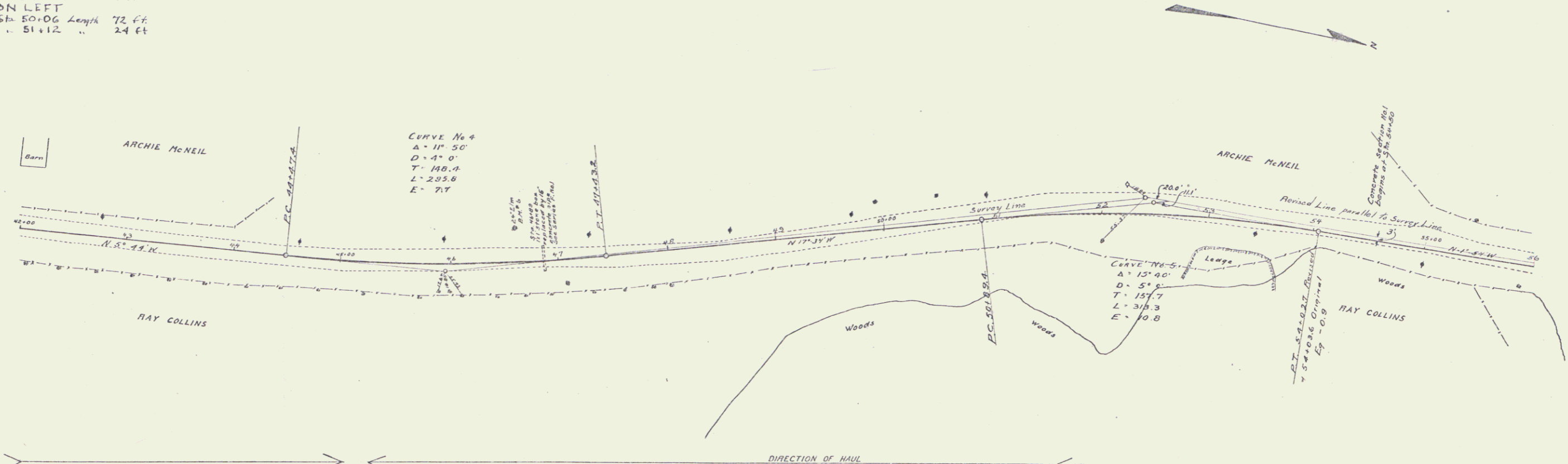
4

**GUARD RAIL REQUIRED**  
 ON LEFT  
 Sta. 46+77 to Sta. 47+01 Length 24 ft.  
 ON RIGHT  
 Sta. 46+77 to Sta. 47+01 Length 24 ft.  
 TOTAL ON THIS SHEET 48 FT.  
 ON LEFT  
 Sta. 49+34 to Sta. 50+06 Length 72 ft.  
 Sta. 50+28 to Sta. 51+12 Length 24 ft.

**NEW CULVERTS REQUIRED**  
 Sta. 46+85 15" Concrete 32 ft  
 Sta. 46+85 Concrete 20  
 1-2-9  
 -2-9

**STANDARD UNDERDRAIN**  
 Sta. 42+00 to Sta. 51+00 Length 900 ft  
**OUTLETS** 156 ft.

FOOTING	17472	17472	17472	17472	17472
9	17	17	1022	6	13



As Shown  
 As Proposed  
 As Surveyed  
 As Proposed  
 As Surveyed  
 As Proposed  
 As Surveyed

As Shown  
 As Proposed  
 As Surveyed  
 As Proposed  
 As Surveyed

B.M. No. 6 Spike in 24" Elm Left of Sta. 46+62 Elev. 46.24

5

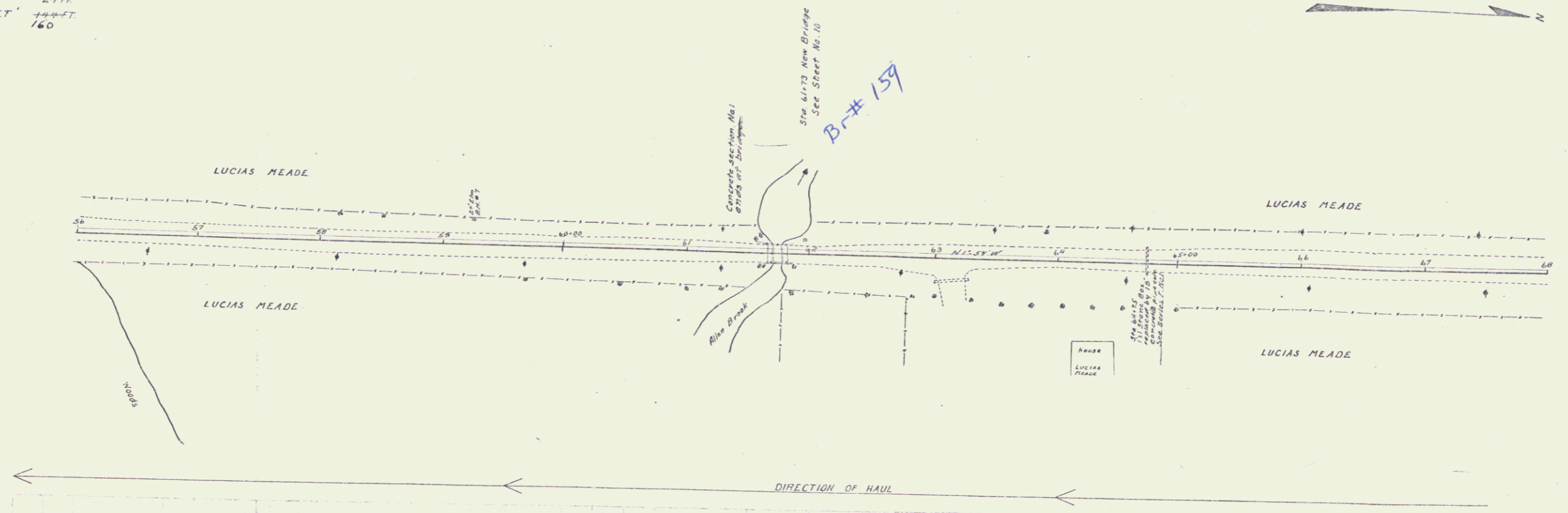
GUARD RAIL REQUIRED  
 ON LEFT  
 Sta 61+00 to Sta 61+65 Length 65ft  
 - 61+00 - 62+00 - 24ft  
 - 64+63 - 64+87 - 24ft  
 ON RIGHT  
 Sta 61+00 to Sta 61+65 Length 65ft  
 - 61+00 - 62+00 - 24ft  
 - 64+63 - 64+87 - 24ft  
 TOTAL ON THIS SHEET 144ft  
 160

NEW CULVERTS REQUIRED  
 Sta. 64+75 15' Concrete Pipe 34ft  
 Concrete 1-2-9  
 2.0

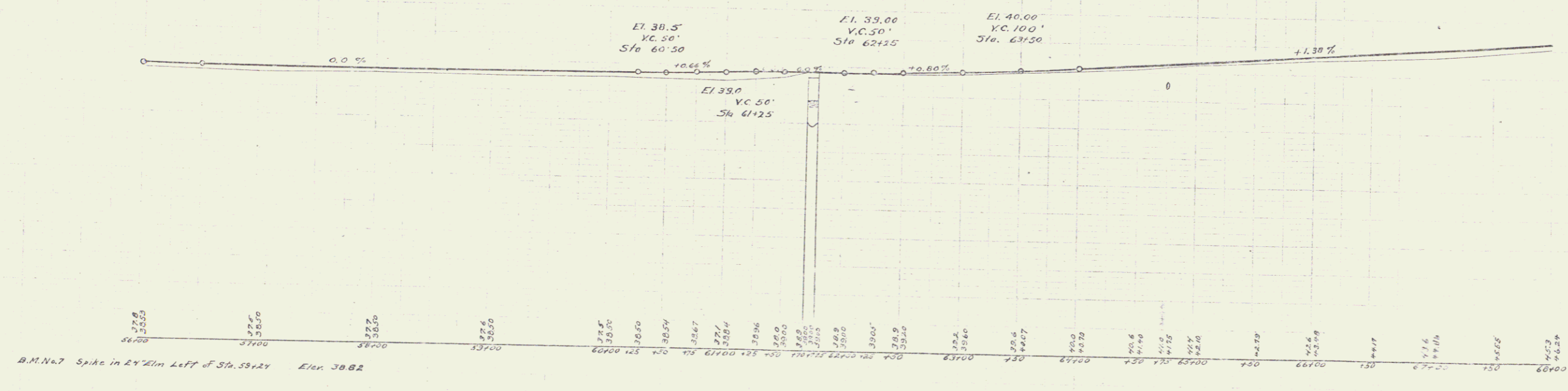
NO.	DATE	BY	REVISION
1	1-2-9	VJ	AS SHOWN

Checked  
 R.L. Daniels  
 3/15/20

Checked  
 R.L. Daniels  
 3/15/20



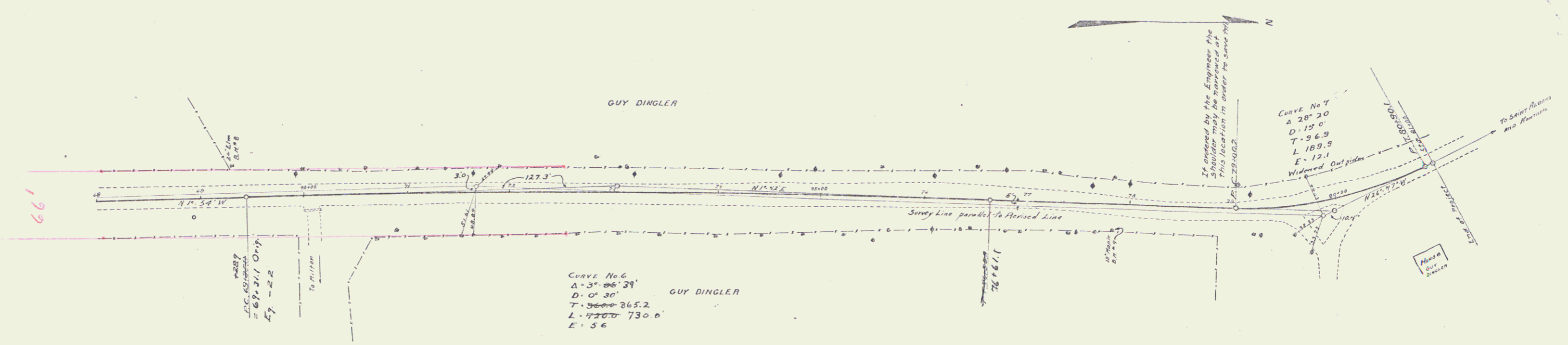
← DIRECTION OF HAUL →



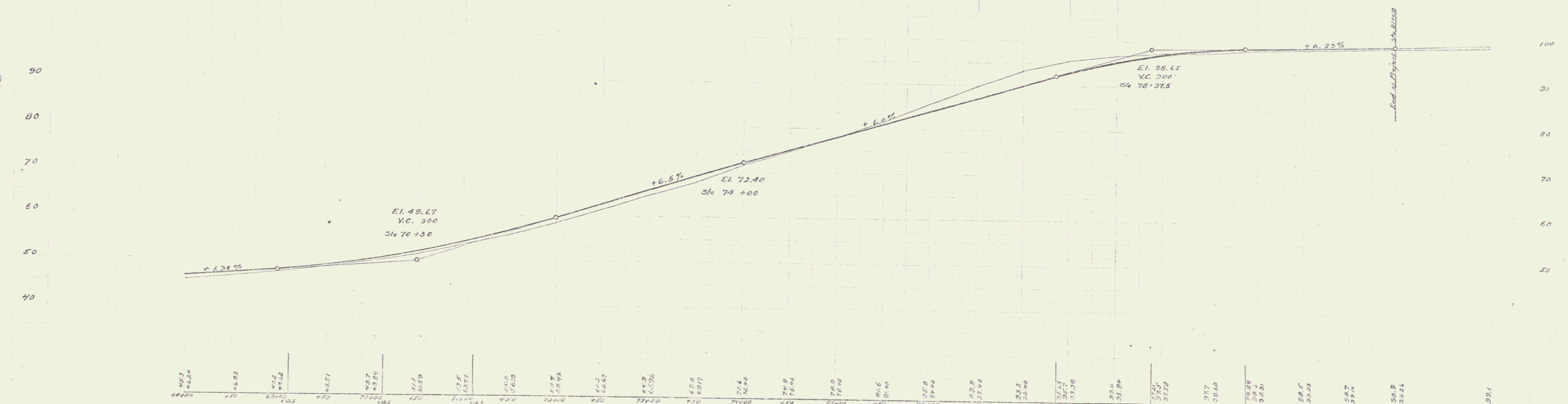
GUARD RAIL REQUIRED  
ON LEFT  
Sta 78+30 to 79+30 Length 80 FT  
TOTAL ON THIS SHEET 80 FT

PER. NO.	DATE	REVISION	BY	CHKD.	TOTAL
9	VT	27	1922	B	13

Checked  
 Estimated  
 R. J. Flannery  
 J. J. Flannery  
 J. J. Flannery  
 J. J. Flannery



DIRECTION OF HAUL ←



B.M. No. 2. Spike in 24" Elm Left of Sta. 69+30 Elev. 48.13  
 B.M. No. 3. Spike in 12" Maple Right of Sta. 77+82 Elev. 58.38