

**GUARD RAIL REQUIRED**  
 ON LEFT  
 Sta 27+78 to Sta 28+22 Length 24ft  
 - 30+88 - - 35+12 - 24ft  
 ON RIGHT  
 Sta 27+98 to Sta 28+22 Length 24ft  
 - 30+88 - - 33+12 - 24ft  
 TOTAL ON THIS SHEET 96 ft.

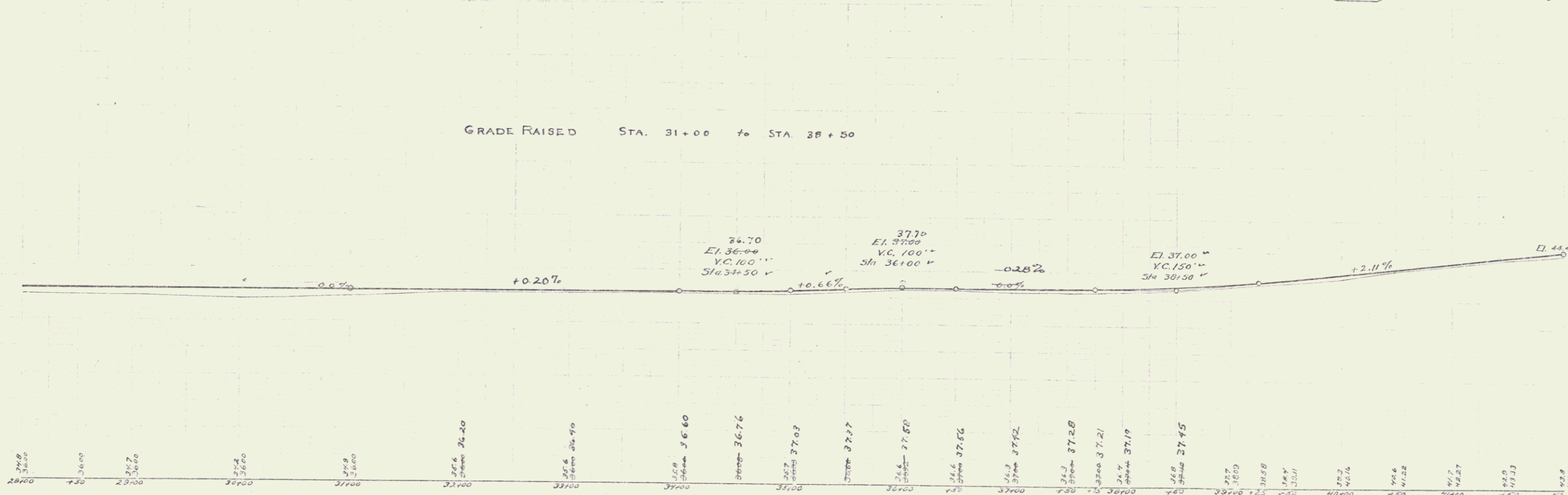
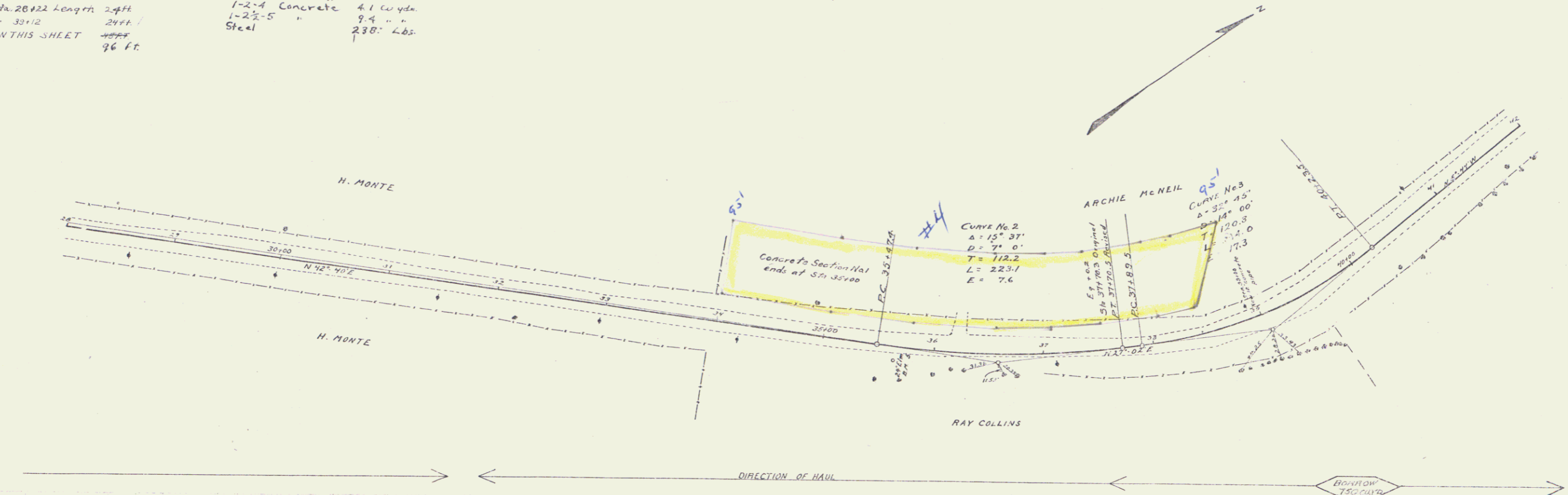
**NEW CULVERTS REQUIRED**  
 Sta 33+06 12" Concrete pipe 33 ft  
 12" Concrete 120 lbs/yds.  
 Sta 28+10 4x2-9" Roof 4.1 cu yds  
 1-2-4 Concrete 9.9 " "  
 1-2-5 " 230.0 Lbs.  
 Steel

**STANDARD UNDERDRAIN**  
 Sta. 40+00 to Sta. 42+00 Length 200 Ft.

NO.	DATE	BY	REVISION
1	5-17-47	WJ	DESIGN
2	5-17-47	WJ	CONSTRUCTION

All Plans to be Approved by the State Highway Department  
 5-17-47

All Plans to be Approved by the State Highway Department  
 5-17-47



B.M. No. 5 Spike in 2x4" Elm Right of Sta. 35+71 Elev. 39.83