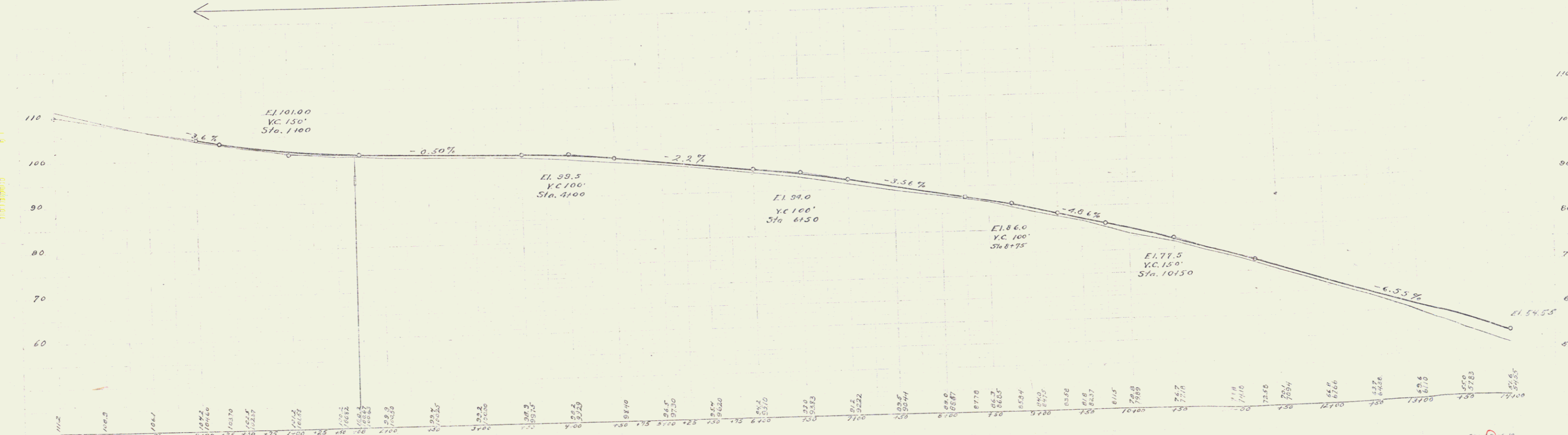
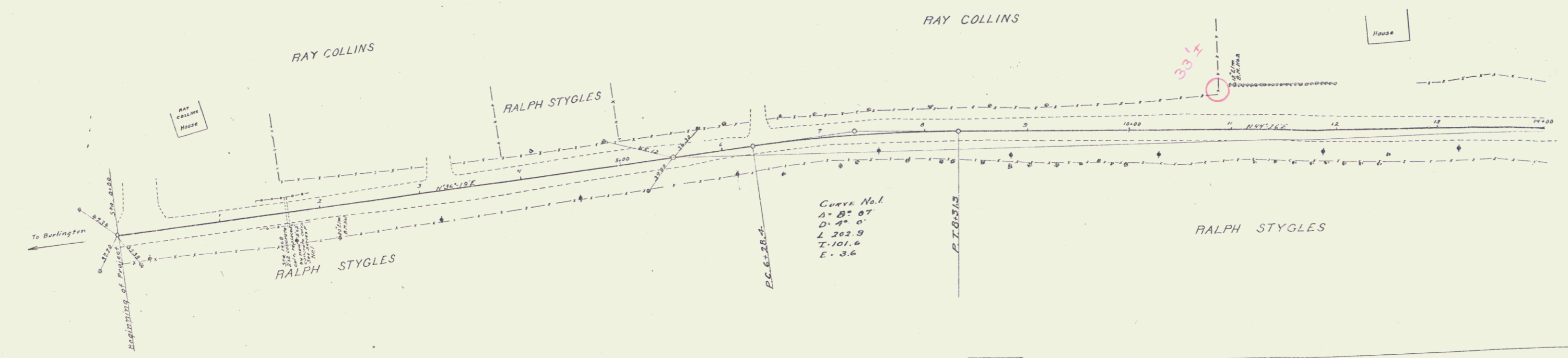


FED. ROAD DIST. NO.	STATE	FED. ROAD PROJ. NO.	SHEET NO.	TOTAL SHEETS
9	VT	47	1022	3

**GUARD RAIL REQUIRED**  
 ON RIGHT  
 Sta. 1150 to Sta. 1400 Length 250 ft.  
 ON LEFT  
 Sta. 1150 to Sta. 1400 Length 24 ft.  
 TOTAL THIS SHEET 48 FT.

**NEW CULVERTS REQUIRED**  
 Sta. 1160 2'x2' Concrete 72 cu. yds.  
 1-2-4 Concrete 82  
 1-2-5 Concrete 302 cu. yds.



D.M. No. 1 Spike in 20' Elm Right of Sta. 1160 Elev. 100.00  
 D.M. No. 2 Spike in 12' Elm Left of Sta. 1160 Elev. 76.08