

INDEX OF SHEETS

SHEET NO.	TITLE PAGE
2	TYPICAL CROSS-SECTION OF IMPROVEMENT. TYPE: CONCRETE
3	PLAN AND PROFILE STA. 18+50 TO 27+00
4	" " " " STA. 27+00 TO 33+00
5	" " " " STA. 33+00 TO 34+00
6	" " " " STA. 34+00 TO 37+00
7	" " " " STA. 37+00 TO 41+00
8	" " " " STA. 41+00 TO 42+00

SHEETS Nos 9 TO 20 CROSS SECTIONS

This Project to be constructed in accordance with Standard Specifications on file with the U.S. Bureau of Public Roads

All structures on this project to be constructed in accordance with details given on Standard Structure Sheets Nos. 17, 18 & 19.

STATE OF VERMONT  
STATE HIGHWAY DEPARTMENT

PLAN AND PROFILE OF PROPOSED  
STATE HIGHWAY

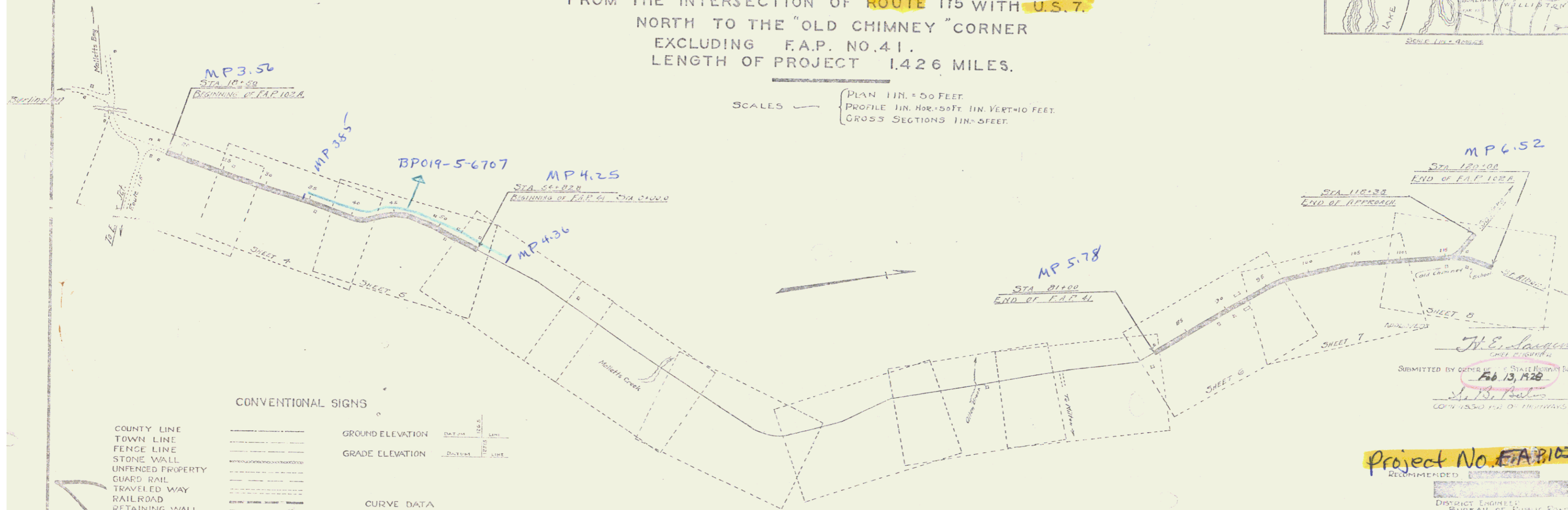
FEDERAL AID PROJECT

TOWN OF COLCHESTER Pin # 99R417  
BURLINGTON-ST. ALBANS ROAD  
FROM THE INTERSECTION OF ROUTE 115 WITH U.S. 7  
NORTH TO THE "OLD CHIMNEY" CORNER  
EXCLUDING F.A.P. NO. 41.  
LENGTH OF PROJECT 1.426 MILES.

DATE	BY	REVISION	BY
10/24/44	J.O.A.	1	J.O.A.



SCALES — PLAN 1 IN. = 50 FEET  
PROFILE 1 IN. HOR. = 50 FT. 1 IN. VERT. = 10 FEET  
CROSS SECTIONS 1 IN. = 5 FEET



CONVENTIONAL SIGNS

COUNTY LINE	GROUND ELEVATION	DEFLECTION ANGLE	Δ
TOWN LINE	GRADE ELEVATION	DEGREE OF CURVE	D
FENCE LINE		RADIUS OF CURVE	R
STONE WALL		TANGENT DISTANCE	T
UNFENCED PROPERTY		LENGTH OF CURVE	L
GUARD RAIL		EXTERNAL DISTANCE	E
TRAVELED WAY		POINT OF INTERSECTION P.I.	P.I.
RAILROAD		POINT OF CURVE	P.C.
RETAINING WALL		POINT OF TANGENT	P.T.
CENTER LINE			
SURVEY LINE			
CULVERT			
DROP INLET			
TROLLEY POLE			
POWER POLE			
TELEPHONE POLE			
TREES			
HEDGE			

LAY-OUT 1 IN. = 500 FT.

THESE PLANS SUBJECT TO SUCH REVISIONS AS MAY BE REQUIRED BY THE BUREAU OF PUBLIC ROADS OR THE STATE ENGINEER.

Submitted by OFFICE of STATE HIGHWAY BOARD  
FEB 13, 1948  
J. B. Bates  
COMMISSIONER OF HIGHWAYS

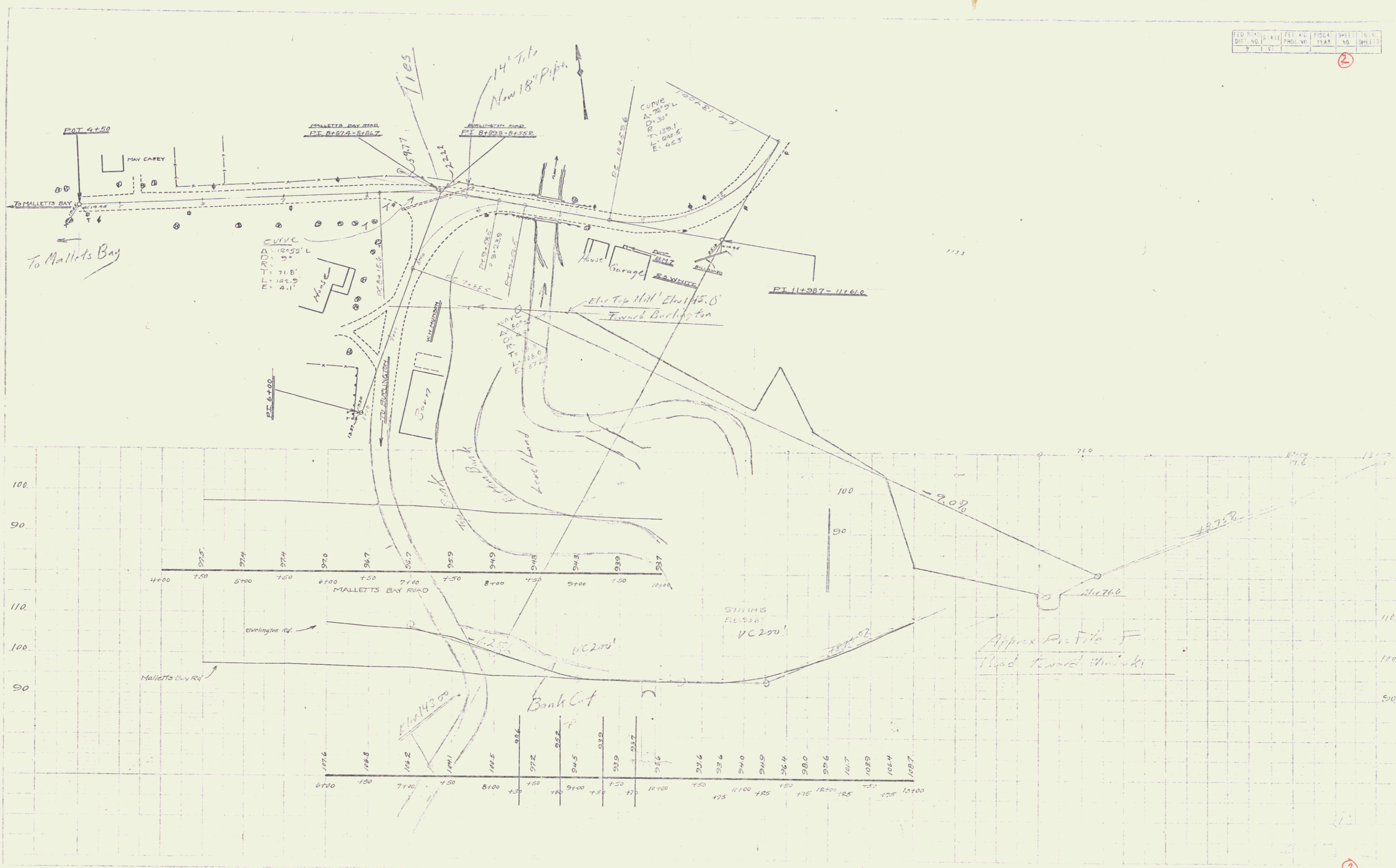
Project No. FA 102-A

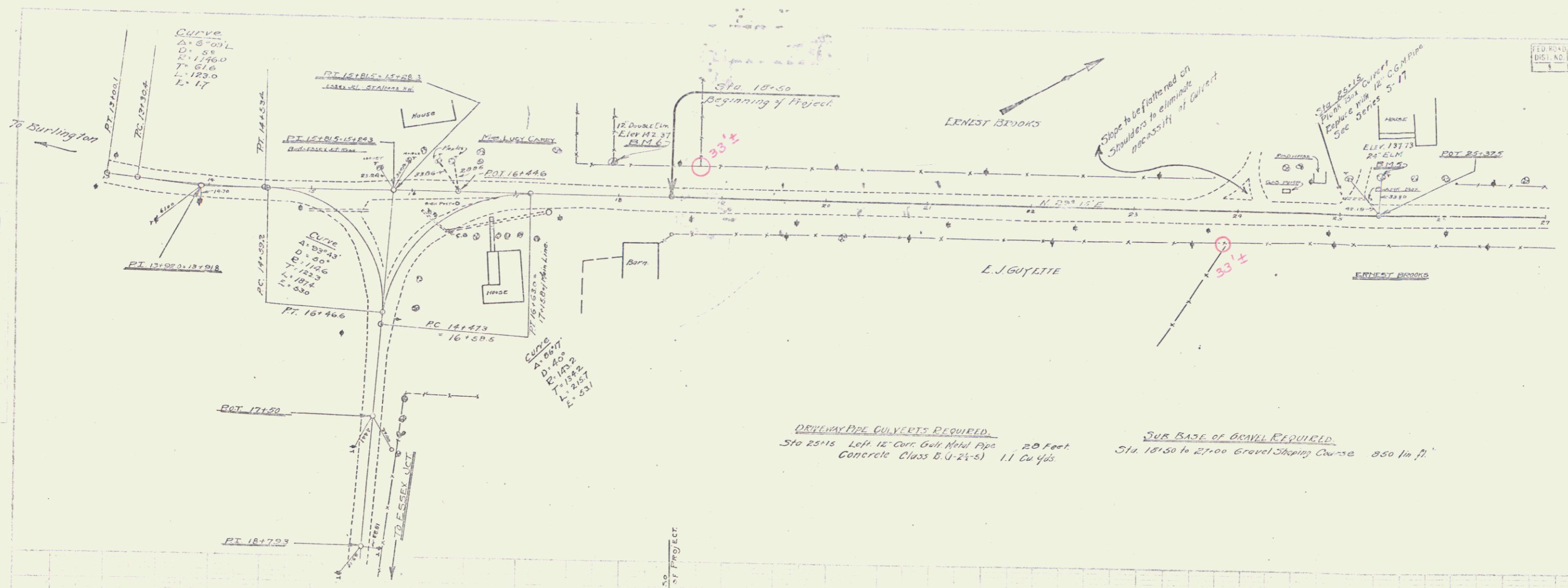
RECOMMENDED  
DISTRICT ENGINEER  
BUREAU OF PUBLIC ROADS  
RECOMMENDED FOR APPROVAL  
STATE ENGINEER  
APPROVED  
DIRECTOR - BUREAU OF PUBLIC ROADS

SERIES F No. 102-A  
SHEET 0 OF 8

STEARNS R. JENKINS

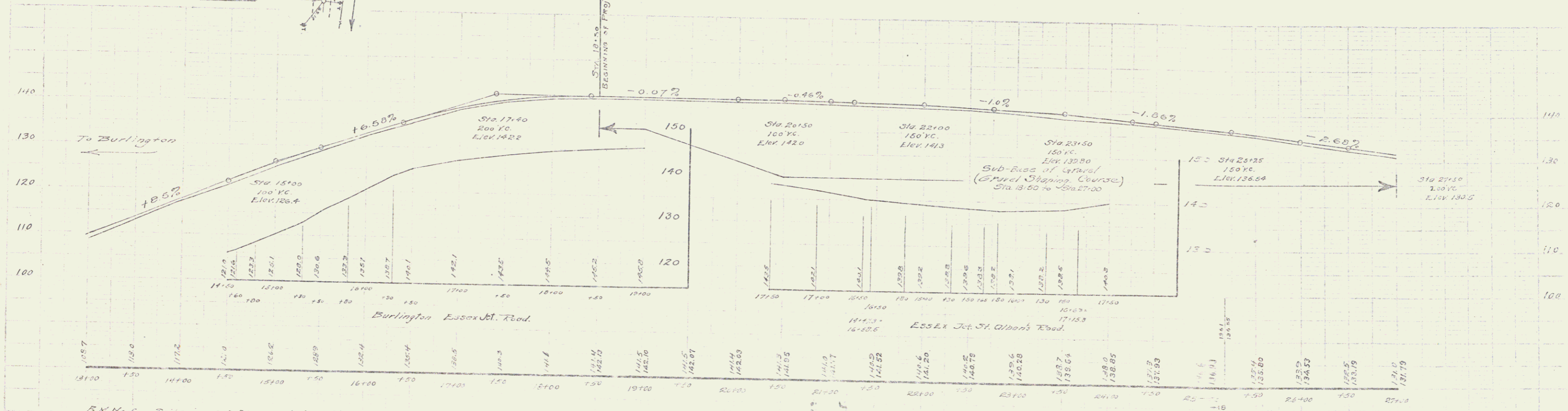
US 7





**DRIVEWAY PIPE CULVERTS REQUIRED.**  
 Sta. 25+15 Left 12" corr. Galv. Metal pipe 20 Feet  
 Concrete Class B.C. (2'-8") 1.1 Cu Yds.

**SUB-BASE OF GRAVEL REQUIRED.**  
 Sta. 18+50 to 27+00 Gravel Shaping Course 850 Cu Yds.



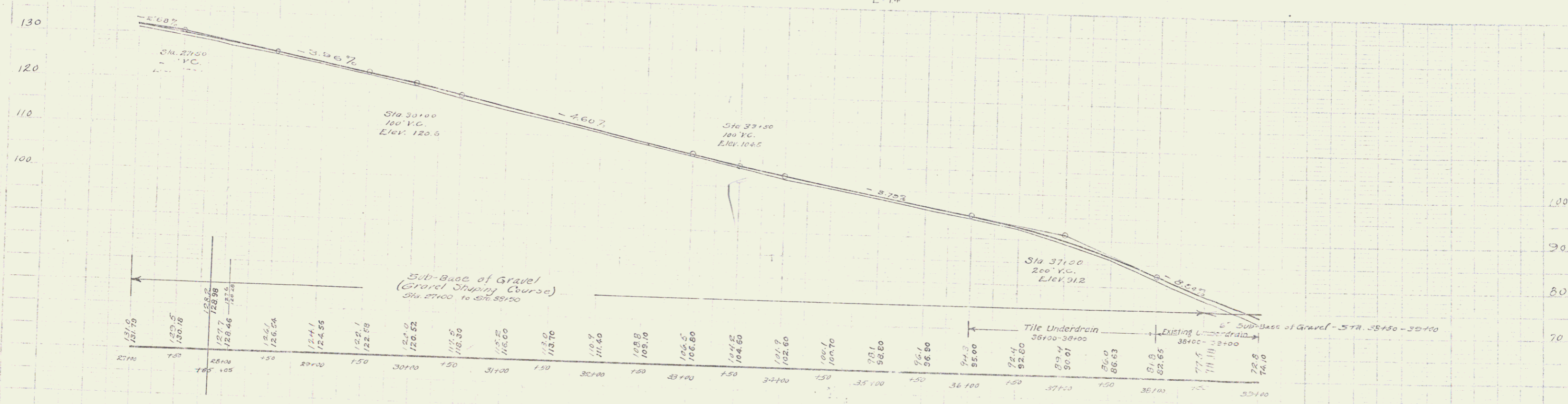
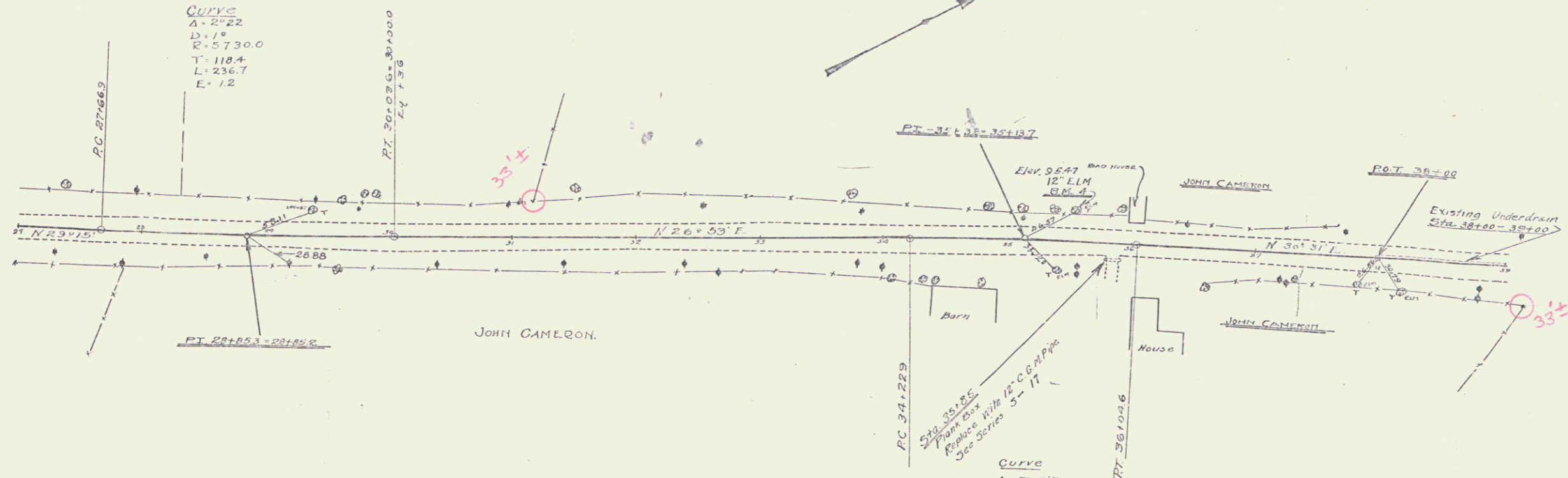
B.N. No 5 Splice in 24" Elm on left of Sta. 23+35 Elev. 137.7  
 B.N. No 6 Splice in 12" Double Elm on left of Sta. 17+34 Elev. 142.37

DRIVEWAY PIPE CULVERTS REQUIRED  
 STA 35+35 EIGHT 12" CONCRETE PIPE 20' Lx 11"  
 Concrete Class 5 (1-2-5) 11 cu yds.

SUB-BASE OF GRAVEL REQUIRED  
 STA 2700 TO STA 38+50 @ Level Shaping Course 1150 Lx 7"

TILE UNDERDRAIN REQUIRED  
 UNDER CENTER OF ROADWAY  
 STA 36+00 - 38+00 LENGTH 200 Lin FT

PROJ. NO.	STATE	FILE NO.	TISCA	SHEET	OF
1024	VA	1024	1928	4	5



B.M. No. 4 Spike in 12" Limb, left of Sta. 35+37 Elev. 95.47'

Series 1 No. 1024 Sheet 4 of 5

**WOOD GUARD RAIL REQUIRED**

LEFT  
Sta. 40+80 to 43+60 Length 280 ft  
" 44+62 to 44+80 " 24 "

RIGHT  
Sta. 40+64 to 43+60 Length 296 ft  
" 44+62 to 44+80 " 24 "

TOTAL FOR SHEET → 624 ft

**NEW CULVERTS REQUIRED**

Sta. 44+74 36" Rein. Concrete Box Culvert  
Concrete Class A (4-2-4) 17.9 cu yds.  
Reinforcing Steel 1166 pounds

**DRIVEWAY PIPE CULVERTS REQUIRED**

Sta. 48+20 Left 16" Corr. Galv. Metal Pipe 30 Lin ft  
Concrete Class B (4-2-3) 11.0 cu yds.  
Sta. 52+10 Right 12" Corr. Galv. Metal Pipe 20 Lin ft  
Concrete Class B (4-2-3) 11 cu yds.  
Sta. 52+60 Left 12" Corr. Galv. Metal Pipe 20 Lin ft  
Concrete Class B (4-2-3) 11 cu yds.

**DRIVEWAY CULVERTS REPAIRS**

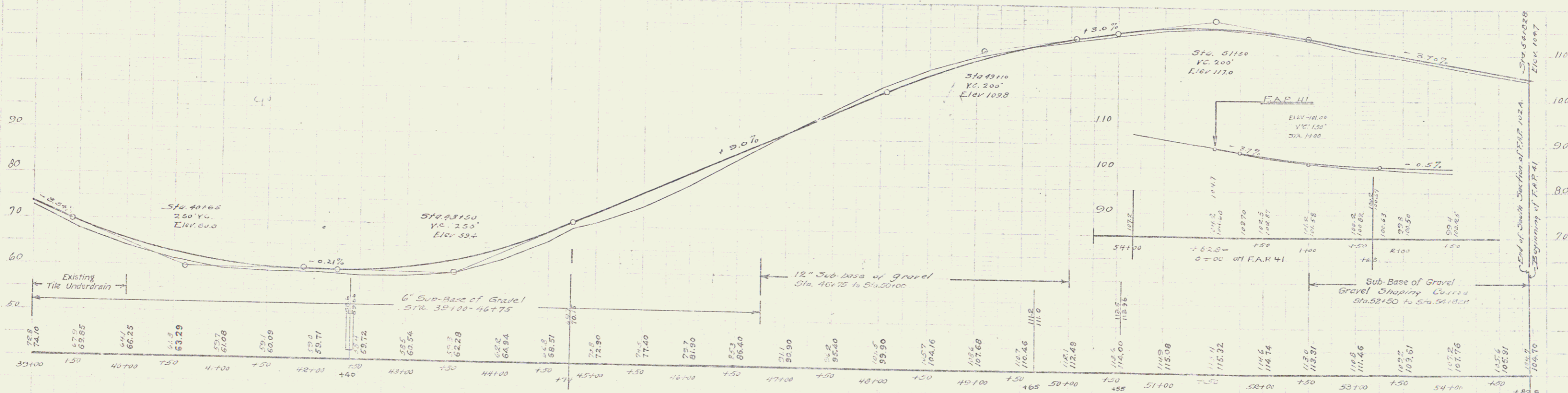
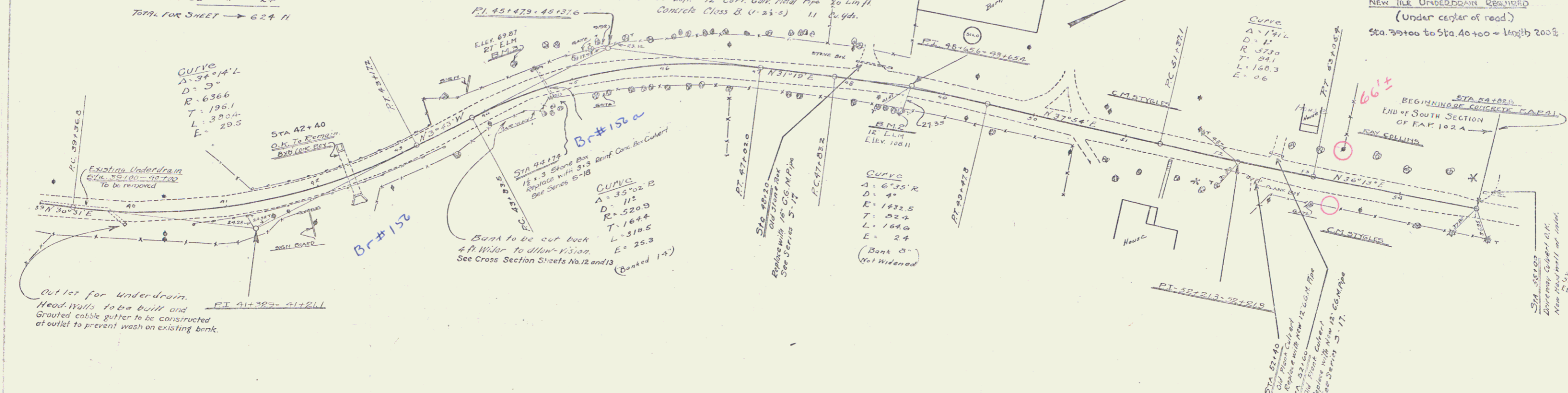
Sta. 50+00 Culvert pipe O.K.  
New Head Wall of Int. Class B Concrete (1-2-3) as cu yds.

**SUB-BASE OF GRAVEL REQUIRED**

Sta. 48+78 to Sta. 50+00 12" Sub-base of Gravel 325 Lin ft  
Sta. 52+50 " 54+50 Gravel Shaping Course 2325 "

**NEW TILE UNDERDRAIN REQUIRED**

(Under center of road)  
Sta. 39+00 to Sta. 40+00 Length 200 ft



B.M. No. 1, 20' Elm on Right of Sta. 216 on F.A.P. No. 41 Elev. 100.0  
B.M. No. 2, Spire in 12' Elm on Right Sta. 48+59 Elev. 100.9  
B.M. No. 3, Spire in 21' " Left Sta. 44+50 Elev. 60.7

Series F No. 102 A  
Sheet 5 of 20

5

WOOD GUARD RAIL REQUIRED

RIGHT  
Sta 80+00 to 81+12 Length 24.12

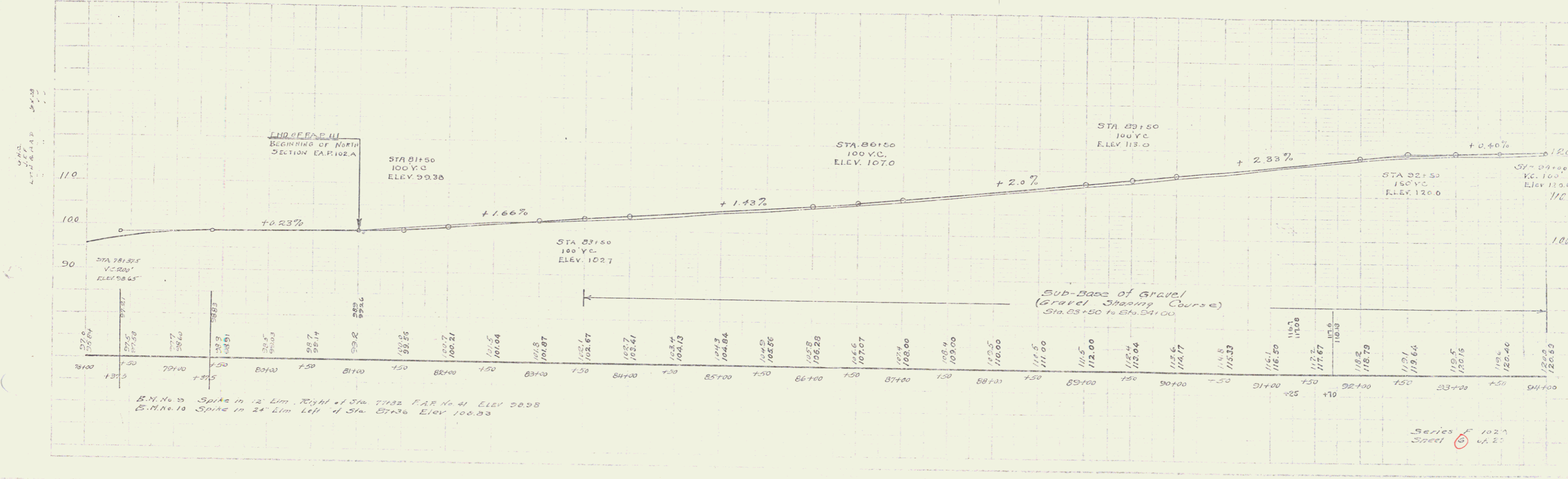
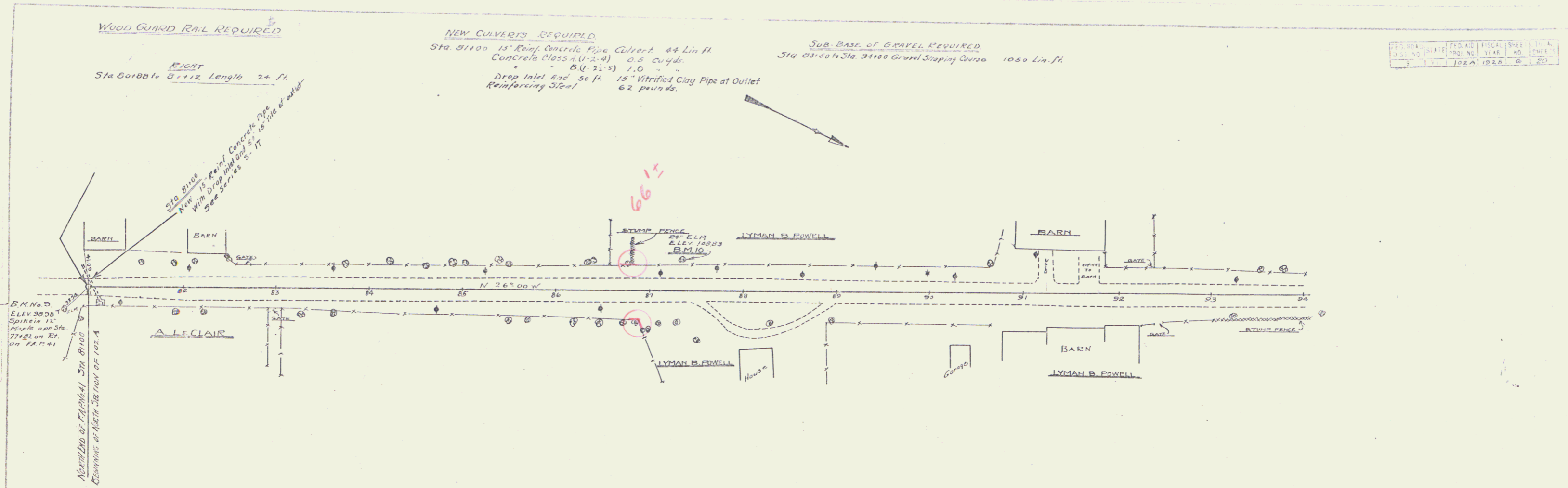
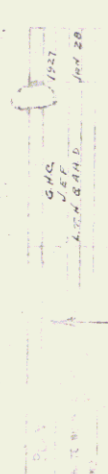
NEW CULVERTS REQUIRED

Sta 81+00 15" Rein. Concrete Pipe Culvert 44 Lin. ft.  
Concrete Class (U-3-A) 0.8 cu yds.  
84-21-3 1.0  
Drop Inlet and 50 ft. 15" Vitrified Clay Pipe at Outlet  
Reinforcing Steel 62 pounds.

SUB-BASE OF GRAVEL REQUIRED

Sta 81+50 to Sta 94+00 Gravel Stripping Course 1050 Lin. ft.

PROJECT NO.	102A	SHEET NO.	6
DATE	10/22/20	SCALE	1" = 20'



B.M. No. 9 Spike in 12' Elm. Right of Sta. 77+32 F.A.R. No. 41 Elev. 98.98  
 B.M. No. 10 Spike in 24' Elm. Left of Sta. 87+36 Elev. 100.93

Series F 102A  
 Steel 6 1/2"

WOOD GUARD RAIL REQUIRED

LEFT  
Sta 95150 to 95160 Length 24 ft  
RIGHT  
Sta 95160 to 95170 Length 24 ft  
TOTAL THIS SHEET → 48 ft

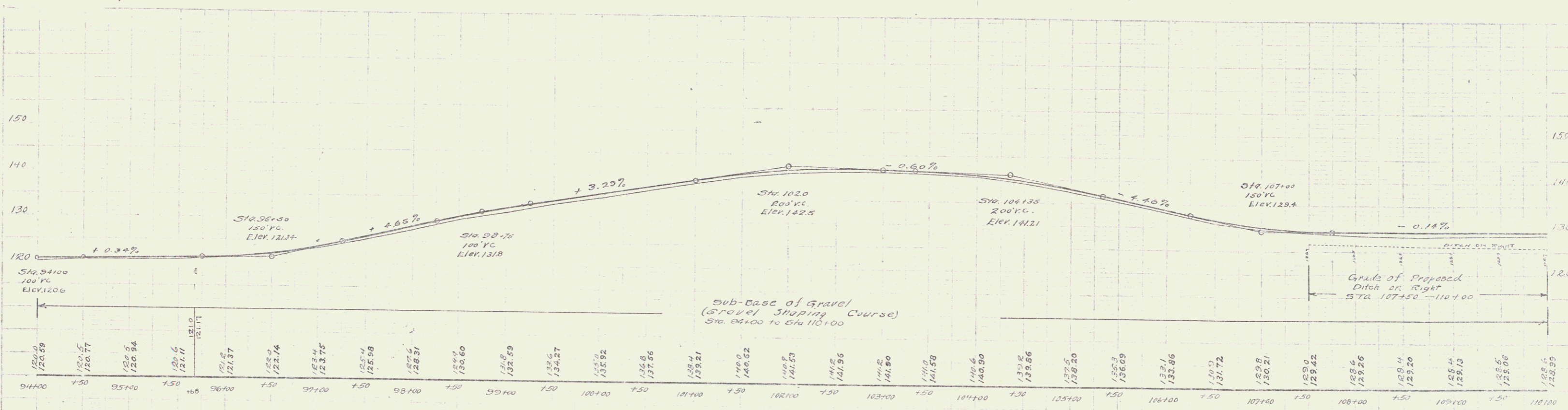
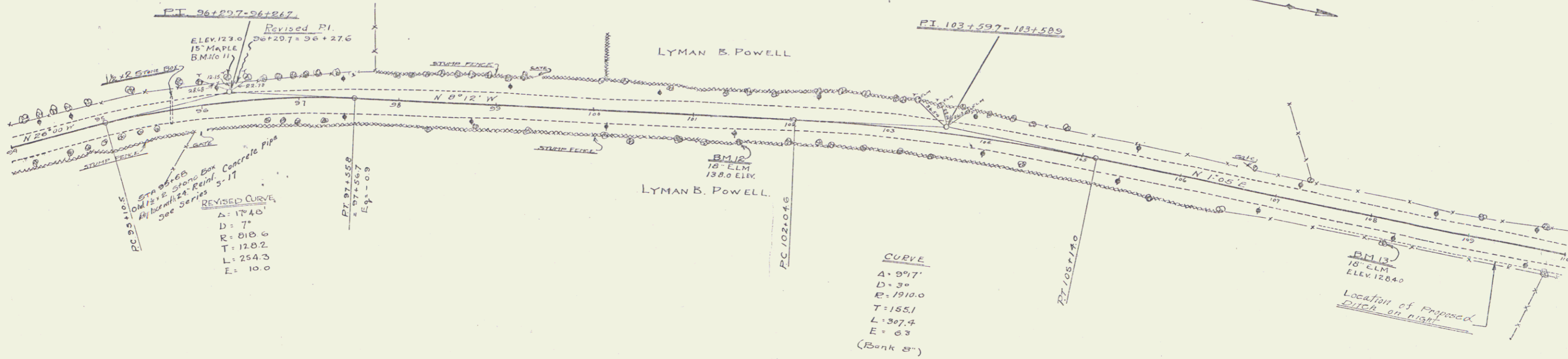
NEW CULVERTS REQUIRED

Sta 95160 24" Rein. Concrete Pipe Culvert 32 Lin. ft.  
Concrete Class B (4-2 1/2") 4.1 Cu. yds.  
Reinforcing Steel 33 Pounds.

SUB-BASE OF GRAVEL REQUIRED

Sta 94100 to 110100 Gravel Shaping Course 1600 Lin. ft.

FED. ROAD DIST. NO.	FED. AC. YEAR	SHEET NO.	TOTAL SHEETS
9	1928	7	20



B.M. No. 11 Spike in 15" Maple Left of Sta. 96+25 Elev. 123.00  
B.M. No. 12 " " 18" Elm Right of Sta. 101+47 " 130.00  
B.M. No. 13 " " 18" Elm " 100+10 " 128.40

Series F. No. 102A  
Sheet 7 of 20

7

**WOOD GUARD RAIL REQUIRED**

**LEFT**  
Sta 110770 to 111701 Length 24 ft  
- 115745 - 116172 " 24 "

**RIGHT**  
Sta 110745 to 111723 Length 120 ft  
- 116143 - 116172 " 24 "

TOTAL FOR SHEET → 192 ft

**NEW CULVERTS REQUIRED**

Sta. 110180 18" Rein. Concrete Pipe Culvert 40 Lin ft.  
Concrete Class B (2 1/2") 27 cu yds.  
Reinforcing steel 33 pounds.

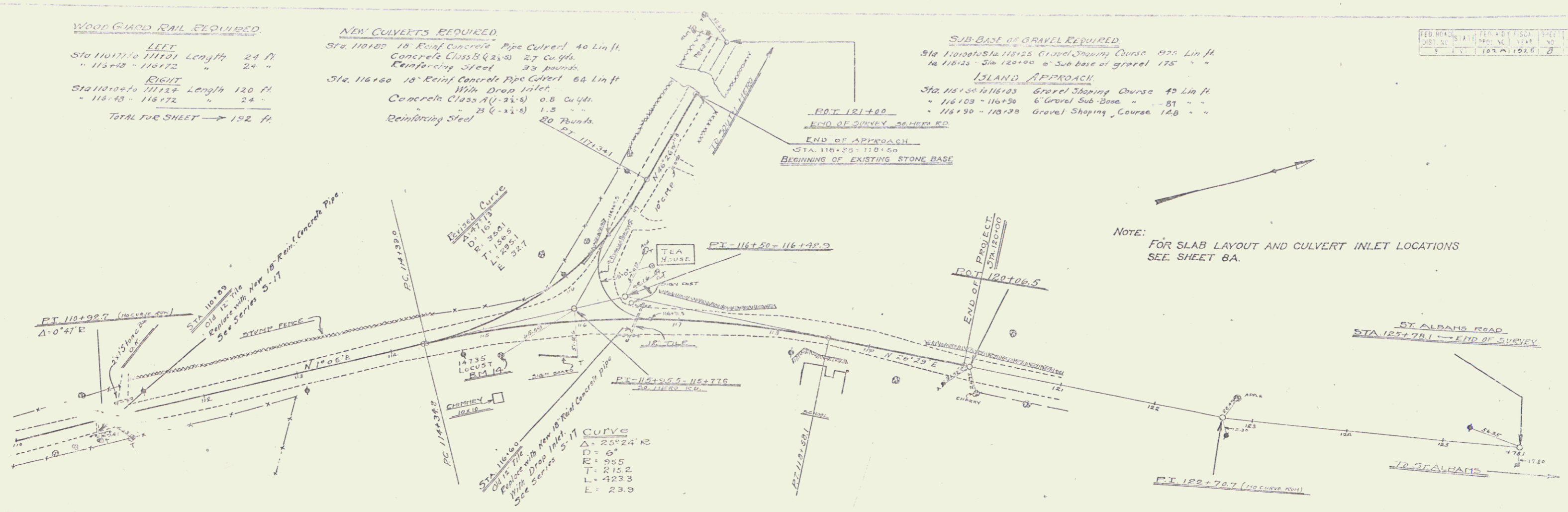
Sta. 116160 18" Rein. Concrete Pipe Culvert 64 Lin ft.  
18" Dia. Inlet  
Concrete Class A (1-2 1/2") 0.8 cu yd.  
" B (1-2 1/2") 1.5 " "  
Reinforcing Steel 20 Pounds

**SUB-BASE OF GRAVEL REQUIRED**

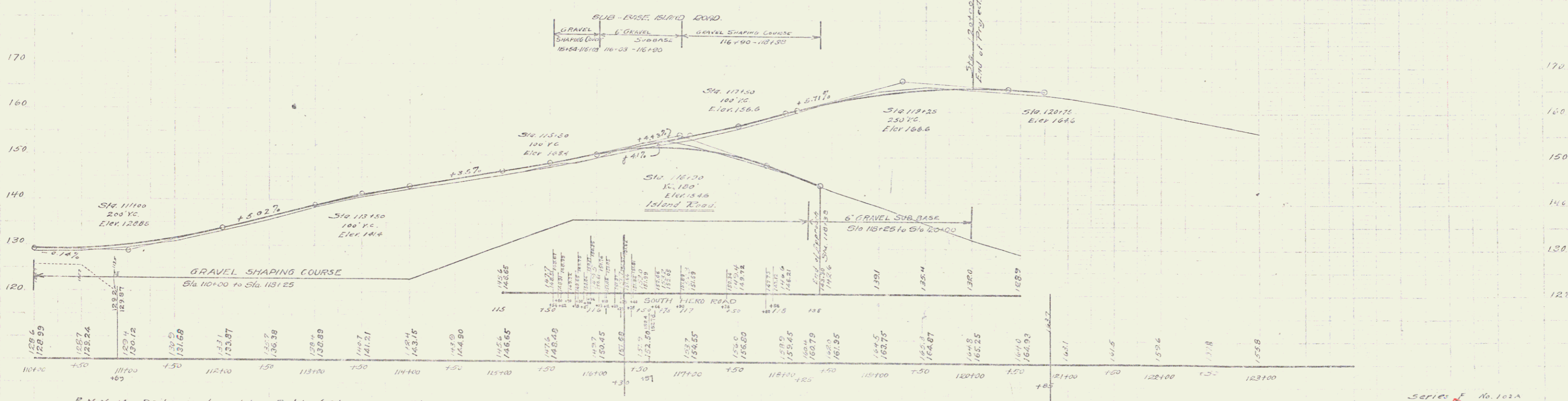
Sta 110000 to 116125 Gravel Shaping Course 925 Lin ft.  
16 1/2" Dia. Sta 120100 6" Sub-base of gravel 175 " "

**ISLAND APPROACH**  
Sta 116125 to 116143 Gravel Shaping Course 43 Lin ft.  
- 116103 - 116130 6" Gravel Sub-base " 81 " "  
- 116190 - 116198 Gravel Shaping Course 148 " "

FED. ROAD DIST. NO.	STATE	PROJECT NO.	SHEET NO.
102	VA	102A	8



NOTE: FOR SLAB LAYOUT AND CULVERT INLET LOCATIONS SEE SHEET 8A.



B.M. No. 17 Spike in Locust tree, Right of Sta. 115+14. Elev. 149.35

Series E No. 102A  
Sheet 8 of 20