

WOOD GUARD RAIL REQUIRED

RIGHT
Sta 80+00 to 81+12 Length 24.12

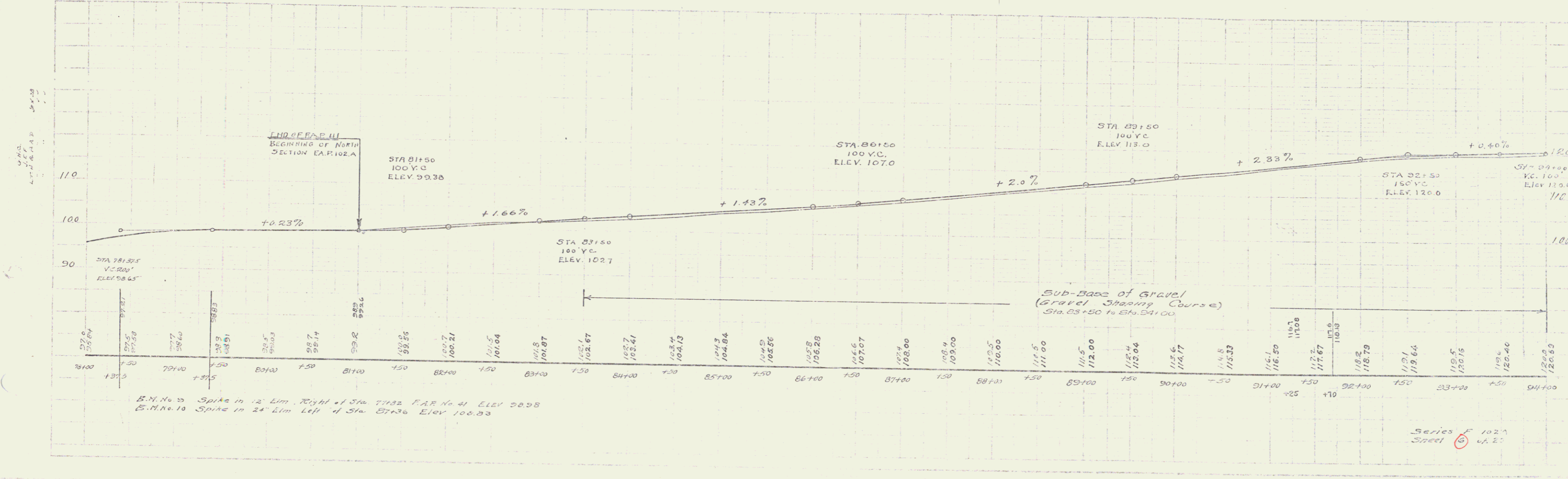
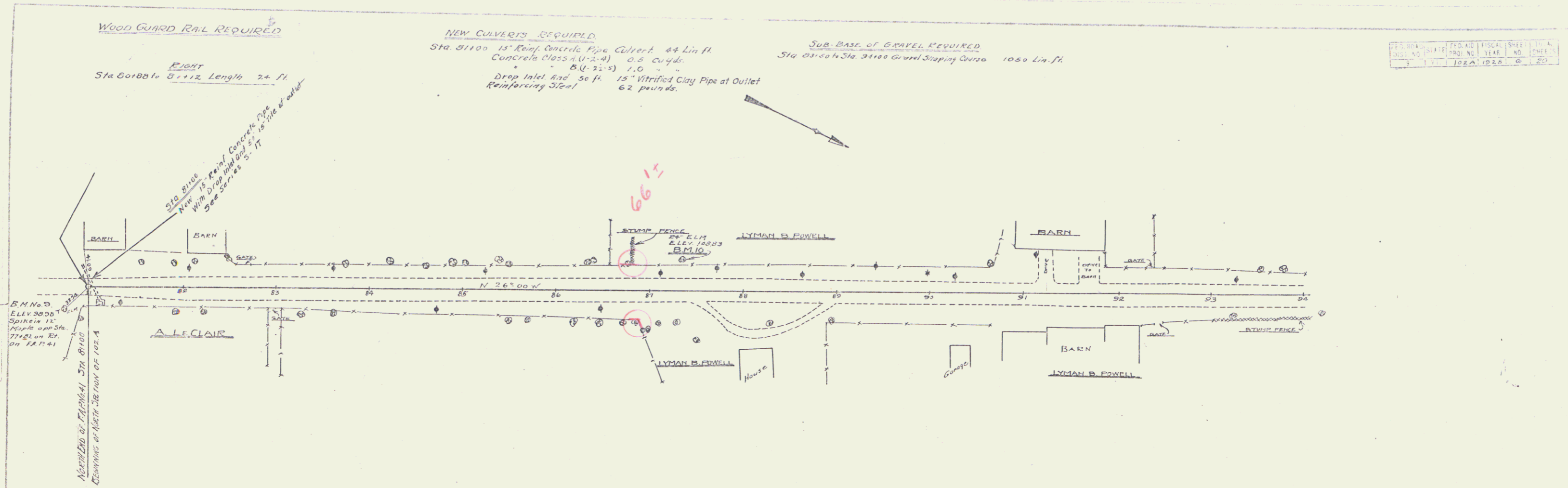
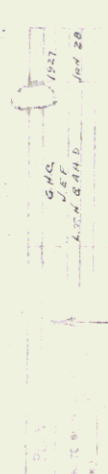
NEW CULVERTS REQUIRED

Sta 81+00 15" Rein. Concrete Pipe Culvert 44 Lin. ft.
Concrete Class (U-3-A) 0.8 cu yds.
8.4 (2'-3") 1.0
Drop Inlet and 50 ft. 15" Vitrified Clay Pipe at Outlet
Reinforcing Steel 62 pounds.

SUB-BASE OF GRAVEL REQUIRED

Sta 81+50 to Sta 94+00 Gravel Stripping Course 1050 Lin. ft.

PROJECT NO.	102A	SHEET NO.	6
DATE	10/22/20	SCALE	1" = 20'



B.M. No. 9 Spike in 12' Elm. Right of Sta. 71+32' F.A.R. No. 41 Elev. 98.98
 B.M. No. 10 Spike in 24' Elm. Left of Sta. 81+36' Elev. 100.93

Series F 102A
 Steel 6 4.2'