

WOOD GUARD RAIL REQUIRED

STATION	LEFT	RIGHT
54+57	1	24

CABLE GUARD RAIL REQUIRED

STATION	LEFT	RIGHT
53+72 to 54+25	1	1

NEW REIN. CONCRETE PIPE CULVERTS REQUIRED

STATION	LENGTH	CONC. REIN. STEEL	D.I. CURVE
54+57	16'	32 FT 1.5 CY	15 G
53+00	18'	40 FT 2.2 CY	126 LBS

DRIVEWAY PIPE CULVERTS REQUIRED

STATION	LENGTH	D.I.	CONCRETE PAVEMENT
54+25	2	16" x 24"	2.7 CY

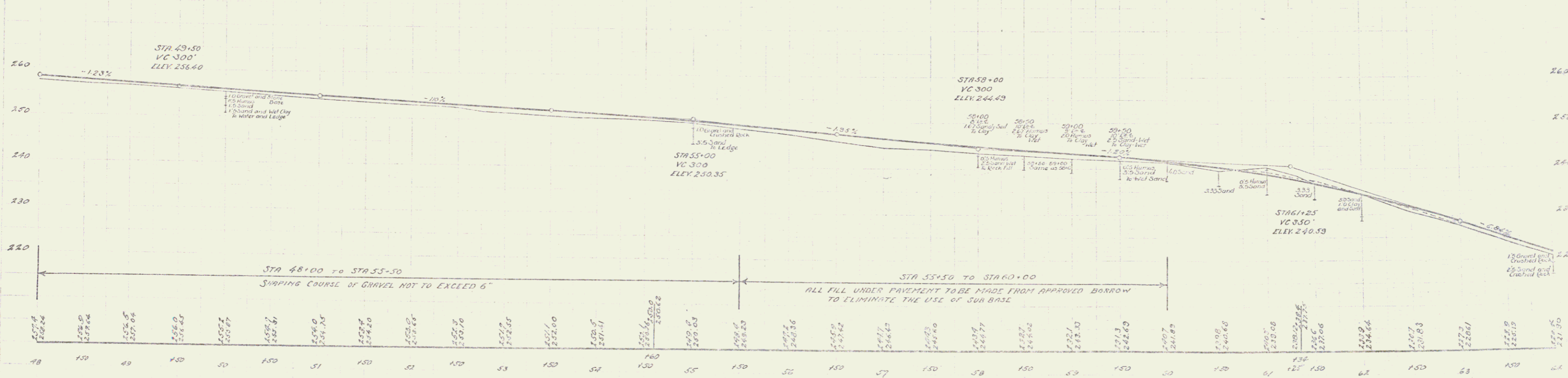
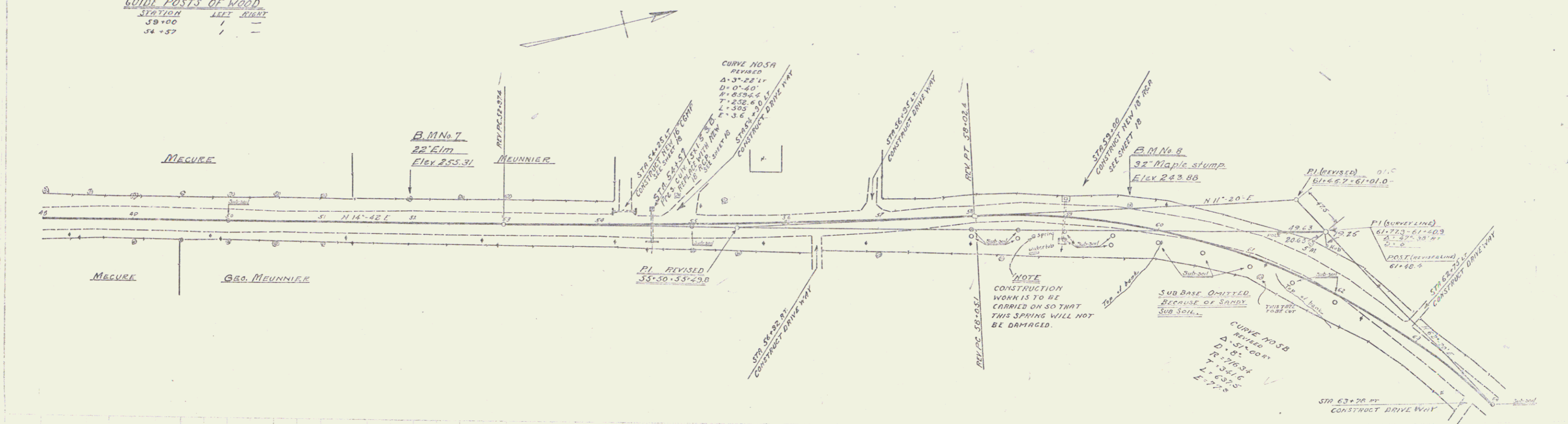
GUIDE POSTS OF WOOD

STATION	LEFT	RIGHT
53+00	1	1
54+57	1	1

S.F.A. 102-1-1950 7 48

102-1-1950

102-1-1950



B.M. No. 7, Spike in 22' Elm, 25 ft left of Sta 51197, Elev. 255.31
 B.M. No. 8 - 32' Maple stump, 19 ft left of Sta 59164, Elev. 243.88

SERIES 5-A-N-133C
 SHEET 7 OF 40

5