

WOOD GUARD RAIL REQUIRED

CULVERT STATIONS	LEFT	RIGHT
36+00	24	24
46+00	24	24

NEW REINFORCED CONCRETE PIPE CULVERTS REQUIRED

STATION	DIAM.	LINE	CONC. FT.	CONC. IN.	REIN. STEEL
36+00	18"	36	3.0	0.0	33 LB.
46+00	15"	36	2.0	0.0	33 LB.

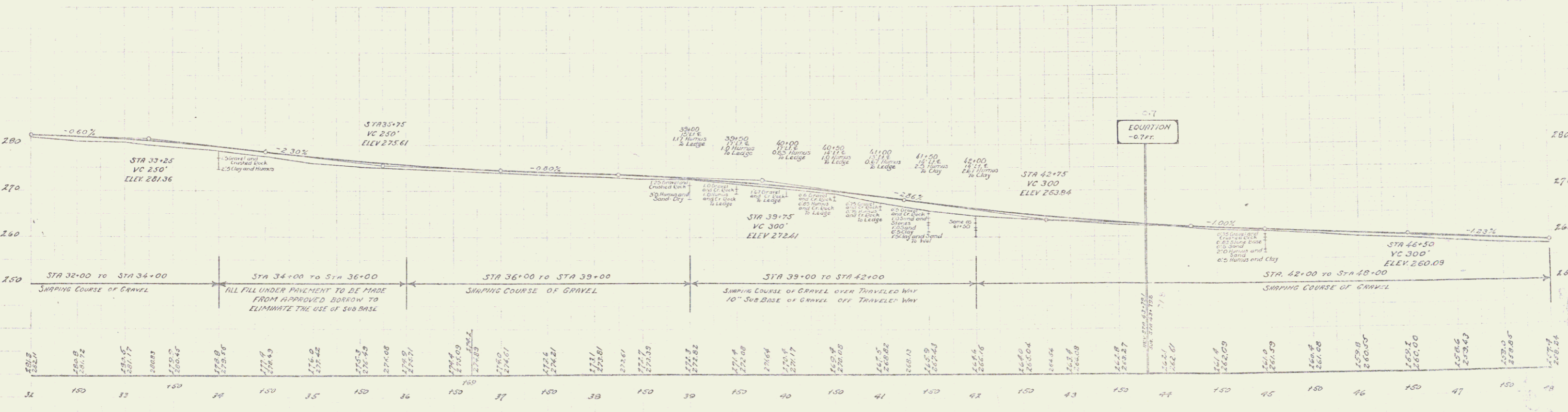
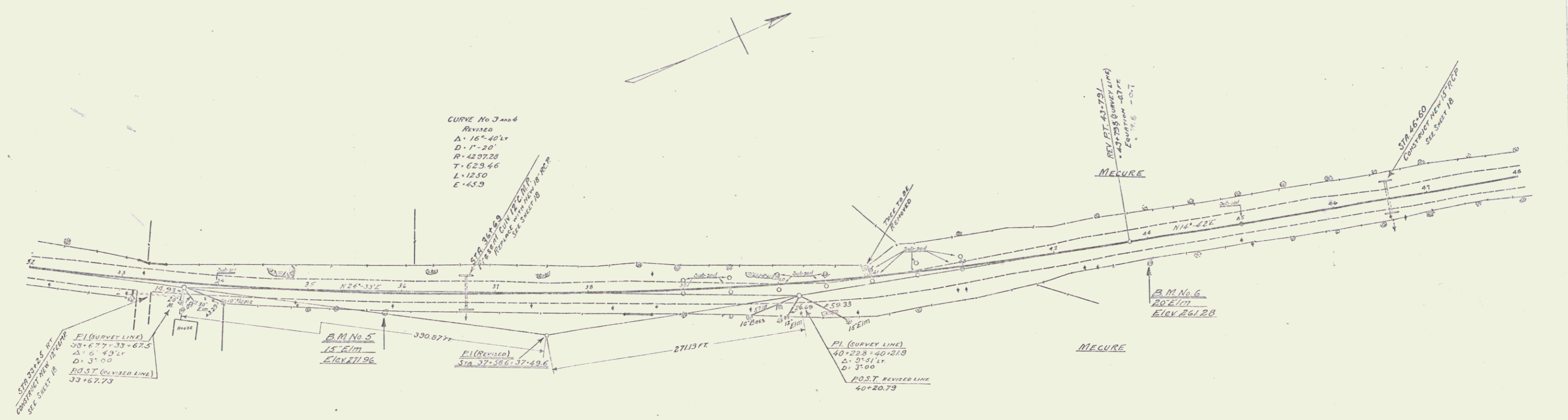
DRIVE WAY PIPE CULVERTS REQUIRED

STATION	DIAM.	LINE	LENGTH	CEMENT	PIPE	MATERIAL
38+25	R 12"	30'	2.3	0.0	0.0	2.3 CY

STATE	YEAR	SHEET NO.	TOTAL SHEETS
182-C	1939	6	8

1928
 1929
 1930
 1931
 1932
 1933
 1934
 1935
 1936
 1937
 1938
 1939

1928
 1929
 1930
 1931
 1932
 1933
 1934
 1935
 1936
 1937
 1938
 1939



B.M. No. 5 Spike in 15' Elm. 18' right of Sta. 35+00. ELEV. 271.96
 B.M. No. 6 " " 20' Elm. 24' right of Sta. 43+00. ELEV. 261.28

SERIES F.V.D. 102C
 SHEET 6 OF 8