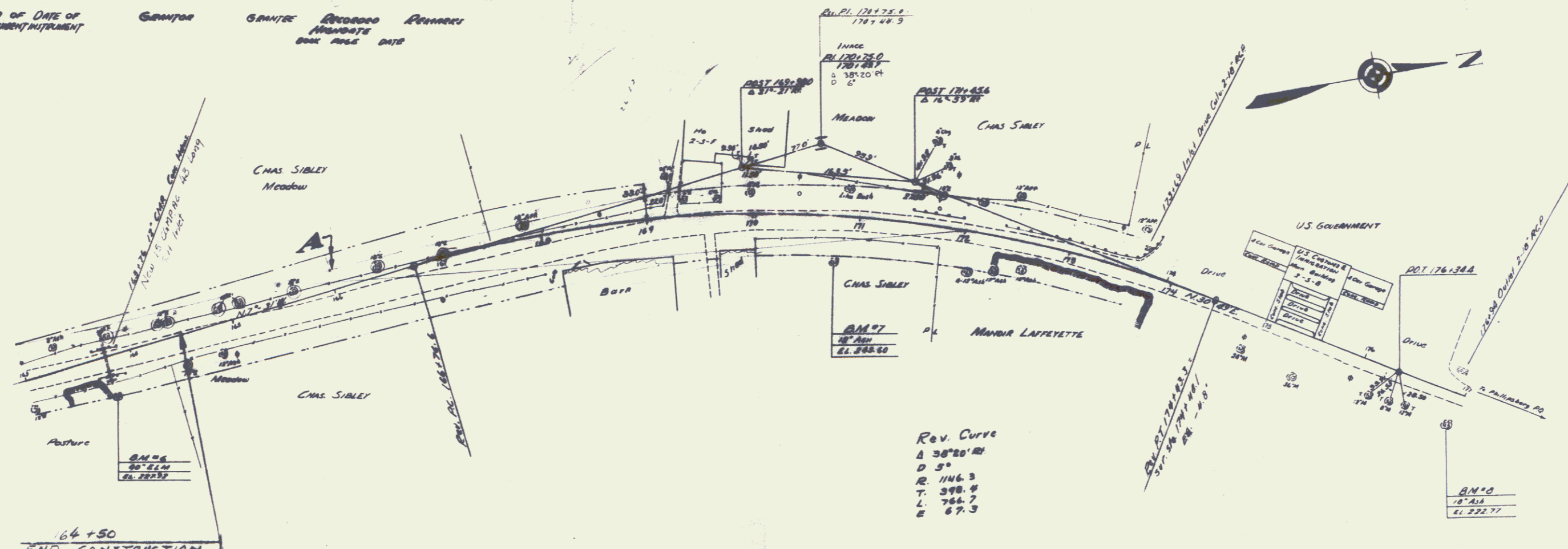
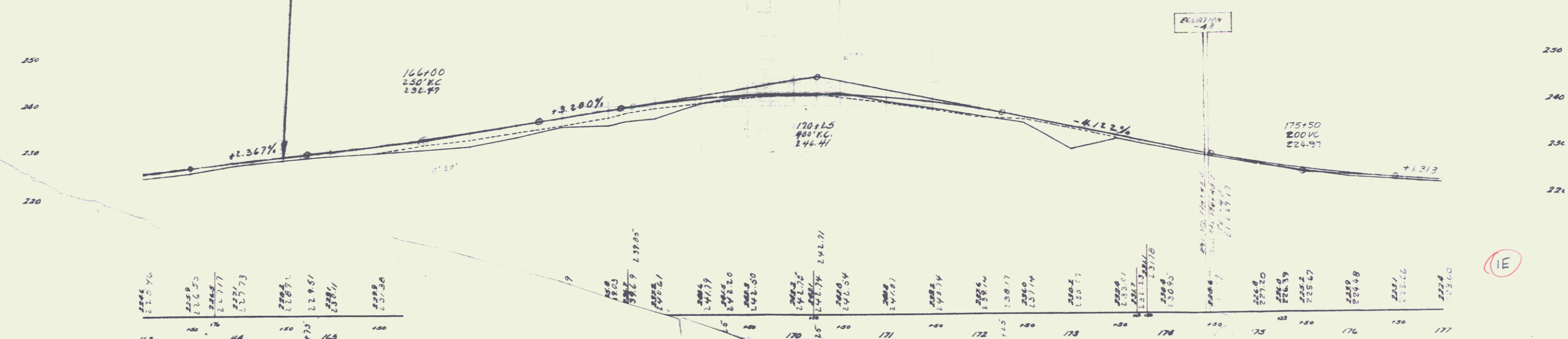


Parcel and Date of Instrument
 Grantor Grantee Record Number Remarks
 Book Page Date



64+50
 END CONSTRUCTION

PARCEL INSTRUMENT	DATE	GRANTOR	GRANTEE	RECORDED	REMARKS
A	W.D.	2-10-37	CHAS & FLOYD SIBLEY	170474	170474
				BOOK PAGE DATE	
				44 578-9	2-15-37



STATION	ELEVATION
163	225.76
164	225.50
165	225.77
166	225.73
167	226.71
168	228.51
169	230.11
170	231.50
171	232.74
172	233.74
173	235.17
174	237.14
175	240.2
176	243.17
177	246.41
178	249.5
179	252.17
180	255.17
181	258.5
182	262.17
183	266.17
184	270.5
185	275.17
186	280.17
187	285.5
188	291.17
189	297.17
190	303.5
191	310.17
192	317.17
193	324.5
194	332.17
195	340.17
196	348.5
197	357.17
198	366.17
199	375.5
200	385.17
201	395.17
202	405.5
203	416.17
204	427.17
205	438.5
206	450.17
207	462.17
208	474.5
209	487.17
210	500.17
211	513.5
212	527.17
213	541.17
214	555.5
215	570.17
216	585.17
217	600.5
218	616.17
219	632.17
220	648.5
221	665.17
222	682.17
223	699.5
224	717.17
225	735.17
226	753.5
227	772.17
228	791.17
229	810.5
230	830.17
231	850.17
232	870.5
233	891.17
234	912.17
235	933.5
236	955.17
237	977.17
238	1000.5
239	1024.17
240	1048.17
241	1072.5
242	1097.17
243	1122.17
244	1147.5
245	1173.17
246	1200.17
247	1227.5
248	1255.17
249	1283.17
250	1311.5
251	1340.17
252	1369.17
253	1398.5
254	1428.17
255	1458.17
256	1488.5
257	1519.17
258	1550.17
259	1581.5
260	1613.17
261	1645.17
262	1677.5
263	1710.17
264	1743.17
265	1776.5
266	1810.17
267	1844.17
268	1878.5
269	1913.17
270	1948.17
271	1983.5
272	2019.17
273	2055.17
274	2091.5
275	2128.17
276	2165.17
277	2202.5
278	2240.17
279	2278.17
280	2316.5
281	2355.17
282	2394.17
283	2433.5
284	2473.17
285	2513.17
286	2553.5
287	2594.17
288	2635.17
289	2676.5
290	2718.17
291	2760.17
292	2802.5
293	2845.17
294	2888.17
295	2931.5
296	2975.17
297	3019.17
298	3063.5
299	3108.17
300	3153.17
301	3198.5
302	3244.17
303	3290.17
304	3336.5
305	3383.17
306	3430.17
307	3477.5
308	3525.17
309	3573.17
310	3621.5
311	3670.17
312	3719.17
313	3768.5
314	3818.17
315	3868.17
316	3918.5
317	3969.17
318	4020.17
319	4071.5
320	4123.17
321	4175.17
322	4227.5
323	4280.17
324	4333.17
325	4386.5
326	4440.17
327	4494.17
328	4548.5
329	4603.17
330	4658.17
331	4713.5
332	4769.17
333	4825.17
334	4881.5
335	4938.17
336	4995.17
337	5052.5
338	5110.17
339	5168.17
340	5226.5
341	5285.17
342	5344.17
343	5403.5
344	5463.17
345	5523.17
346	5583.5
347	5644.17
348	5705.17
349	5766.5
350	5828.17
351	5890.17
352	5952.5
353	6015.17
354	6078.17
355	6141.5
356	6205.17
357	6269.17
358	6333.5
359	6398.17
360	6463.17
361	6528.5
362	6594.17
363	6660.17
364	6726.5
365	6793.17
366	6860.17
367	6927.5
368	6995.17
369	7063.17
370	7131.5
371	7200.17
372	7269.17
373	7338.5
374	7408.17
375	7478.17
376	7548.5
377	7619.17
378	7690.17
379	7761.5
380	7833.17
381	7905.17
382	7977.5
383	8050.17
384	8123.17
385	8196.5
386	8270.17
387	8344.17
388	8418.5
389	8493.17
390	8568.17
391	8643.5
392	8719.17
393	8795.17
394	8871.5
395	8948.17
396	9025.17
397	9102.5
398	9180.17
399	9258.17
400	9336.5
401	9415.17
402	9494.17
403	9573.5
404	9653.17
405	9733.17
406	9813.5
407	9894.17
408	9975.17
409	10056.5
410	10138.17
411	10220.17
412	10302.5
413	10385.17
414	10468.17
415	10551.5
416	10635.17
417	10719.17
418	10803.5
419	10888.17
420	10973.17
421	11058.5
422	11144.17
423	11230.17
424	11316.5
425	11403.17
426	11490.17
427	11577.5
428	11665.17
429	11753.17
430	11841.5
431	11930.17
432	12019.17
433	12108.5
434	12198.17
435	12288.17
436	12378.5
437	12469.17
438	12560.17
439	12651.5
440	12743.17
441	12835.17
442	12927.5
443	13020.17
444	13113.17
445	13206.5
446	13300.17
447	13394.17
448	13488.5
449	13583.17
450	13678.17
451	13773.5
452	13869.17
453	13965.17
454	14061.5
455	14158.17
456	14255.17
457	14352.5
458	14450.17
459	14548.17
460	14646.5
461	14745.17
462	14844.17
463	14943.5
464	15043.17
465	15143.17
466	15243.5
467	15344.17
468	15445.17
469	15546.5
470	15648.17
471	15750.17
472	15852.5
473	15955.17
474	16058.17
475	16161.5
476	16265.17
477	16369.17
478	16473.5
479	16578.17
480	16683.17
481	16788.5
482	16894.17
483	16999.17
484	17105.5
485	17212.17
486	17319.17
487	17426.5
488	17534.17
489	17642.17
490	17750.5
491	17859.17
492	17968.17
493	18077.5
494	18187.17
495	18297.17
496	18407.5
497	18518.17
498	18629.17
499	18740.5
500	18852.17

B.M. #6 SPICE IN ROOT 6" ELM 33.8 FT. BY 378 163+76 ELEV. 227
 227 12" IRON 48.8 - - - 170+77 ELEV. 261

SERIES NO
 SHEET 4 STREETS

(IE)

5