

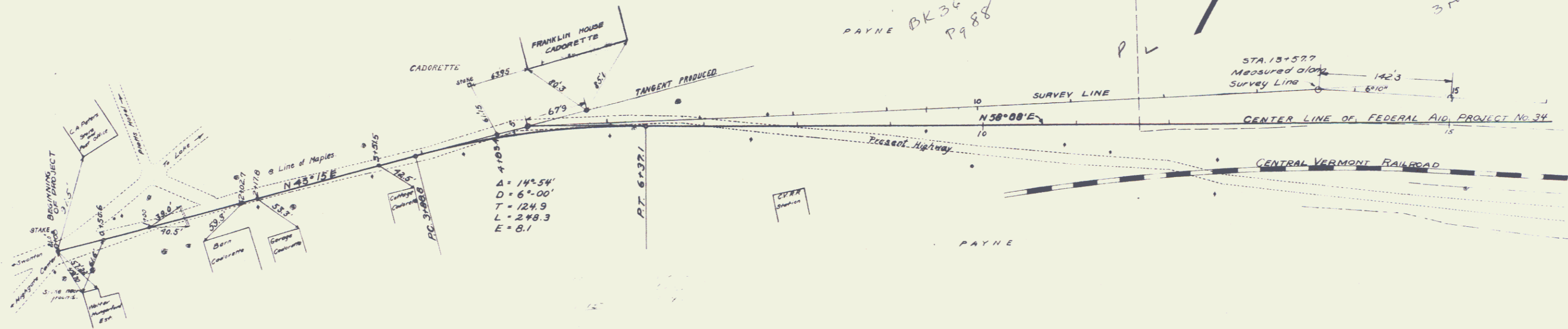
NO.	DATE	BY	REVISION	TOTAL
1	9/22	3		11

GUARD RAIL REQUIRED
 ON LEFT
 Sta. 1+25 - Sta. 1+49 Length 24ft
 Sta. 4+71 - Sta. 4+95 " 24ft
 ON RIGHT
 Sta. 1+28 - Sta. 1+52 Length 24ft
 Sta. 4+71 - Sta. 4+95 " 24ft
TOTAL ON THIS SHEET 96 ft.

SUB-BASE REQUIRED
 Sta. 7+00 - Sta. 16+00 Length 900 ft.

NEW CULVERTS REQUIRED
 Sta. 1+38.9 - 16" Cor. Iron Pipe with Drop Inlet - 30ft
 Concrete Head-Walls - 1-2 1/2 - 5 - 1.5 cu. yds.
 Sta. 4+83.4 - 12" Cor. Iron Pipe with Drop Inlet - 30ft
 Concrete Head-Walls - 1-2 1/2 - 5 - 1.4 cu. yds.

V.P.M. RECORDS 10/20/11

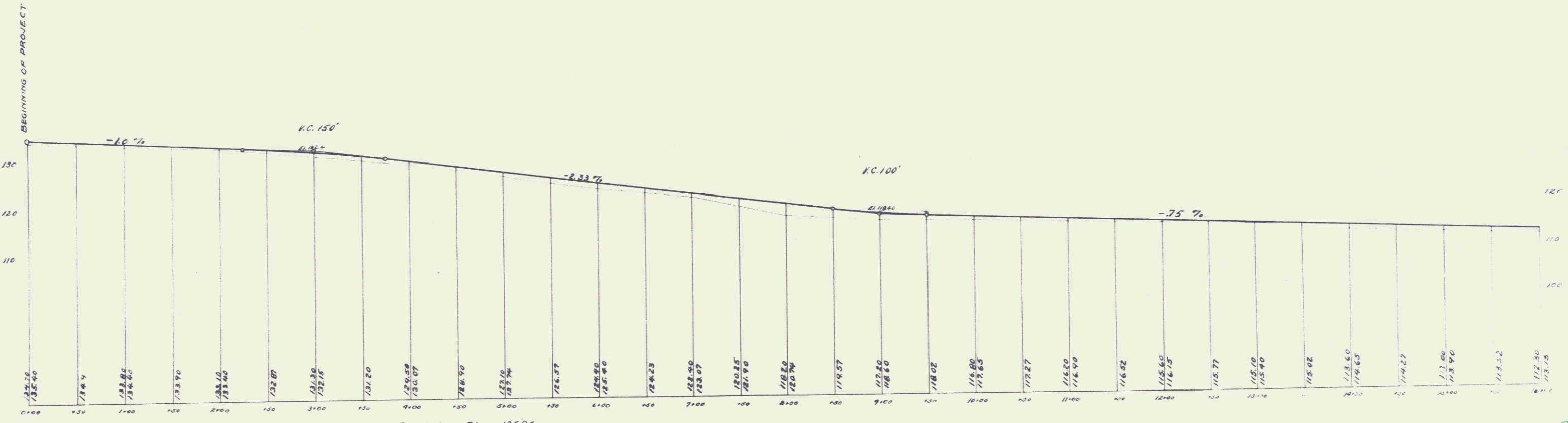


$\Delta = 14^\circ 54'$
 $D = 6^\circ 00'$
 $T = 124.9$
 $L = 248.3$
 $E = 8.1$

#a
 PAYNE BK 36 P 88

#10
 BK 37
 P 9 282
 3 road wide

G.S. Station on 10/20/11



B.M. N.W. Corner of second slab of concrete sidewalk to Post Office Elev. 136.94