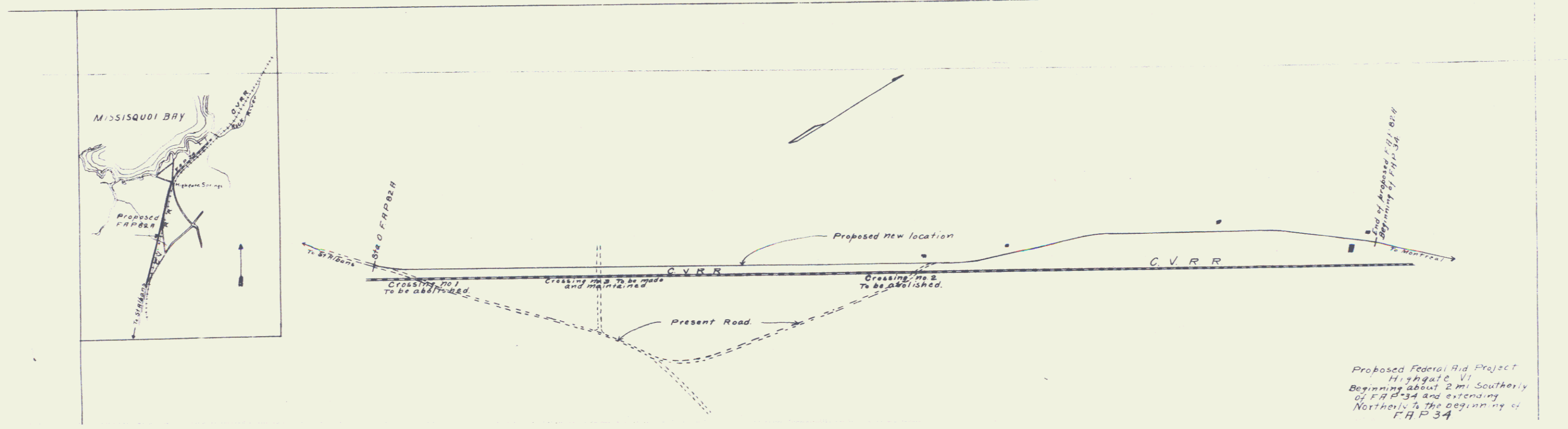
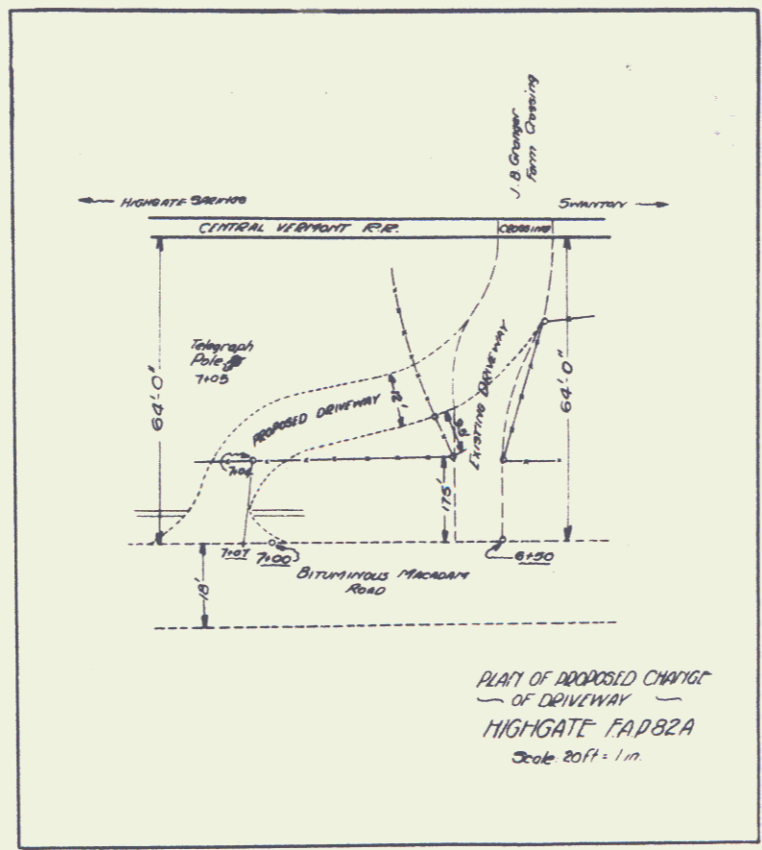




1A





**GUARDRAIL REQUIRED**

**LEFT**  
 STA 14+00 to 15+00 = 24 ft  
 " 23+00 = 24 "

**RIGHT**  
 STA 14+00 to 15+00 = 24 ft  
 STA 23+17 = 24 "

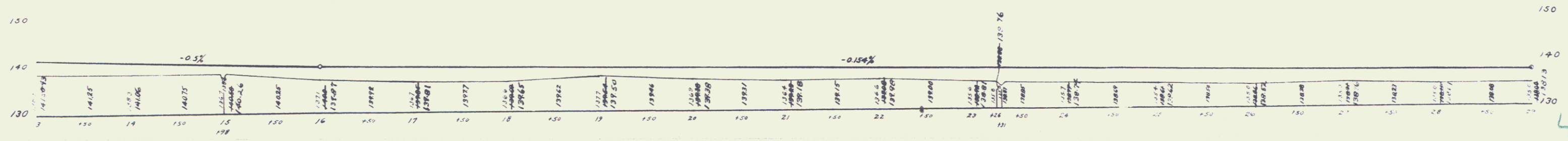
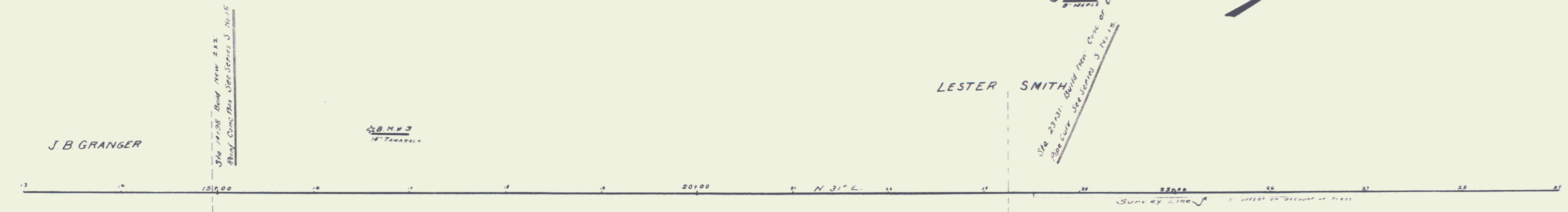
TOTAL THIS SHEET 96 ft

**NEW CULVERTS REQUIRED**

STA 14+38 2x2 Rein. Conc. Box Cul. 10.6  
 Conc. Class A (1 2-4) 9.6 C.Y.  
 Reinf. Steel 635 #4 1A

STA 23+31 15" Rein. Concrete or Cast Iron Pipe Culverts Length 32 ft  
 Conc. Class B (1 2-9) 3.4 C.Y.  
 Reinf. Steel 42 #4 1B

**SUB-BASE REQUIRED**  
 STA 13+00 to STA 29+00 LENGTH 1600 ft



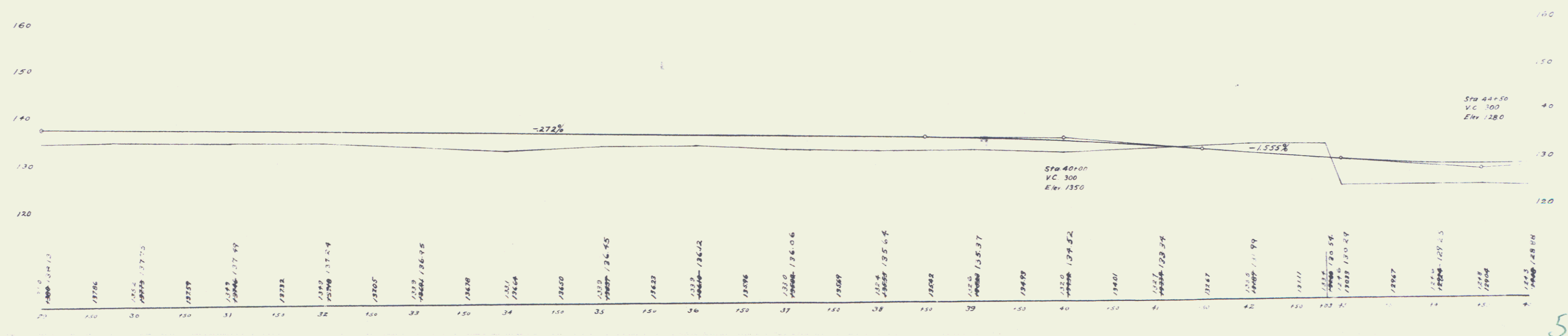
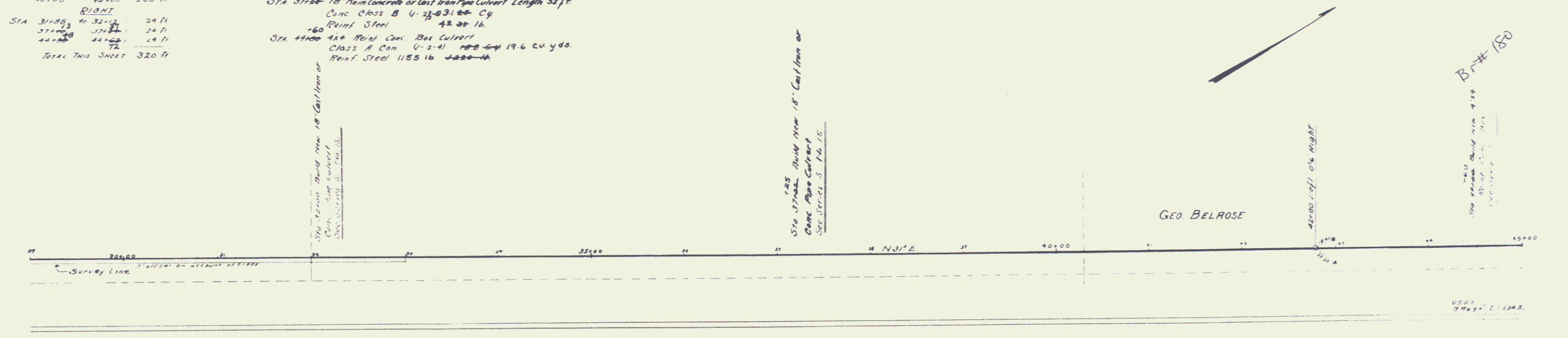
**GUARDRAIL REQUIRED**

LEFT	
STA 31188	to 32112 = 24 ft
32113	to 32137 = 24 ft
32140	to 32164 = 24 ft
43100	to 43100 = 200 ft
RIGHT	
STA 31188	to 32112 = 24 ft
32113	to 32137 = 24 ft
32140	to 32164 = 24 ft
43100	to 43100 = 200 ft
TOTAL THIS SHEET 320 ft	

**NEW CULVERTS REQUIRED**

STA 32100	18" Rein Concrete or Cast Iron Pipe Culvert Length 32 ft
Conc. Class B (1-2-2) 31 1/2" C.Y.	
Rein. Steel 42 3/4 lb	
STA 37188	18" Rein Concrete or Cast Iron Pipe Culvert Length 32 ft
Conc. Class B (1-2-2) 31 1/2" C.Y.	
Rein. Steel 42 3/4 lb	
STA 41100	24" Rein. Con. Box Culvert
Class A Conc. (1-2-4) 19.6 cu yds.	
Rein. Steel 1155 lb	

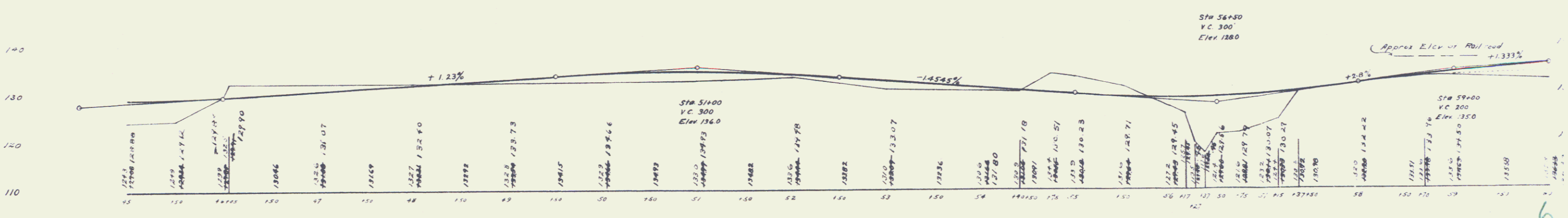
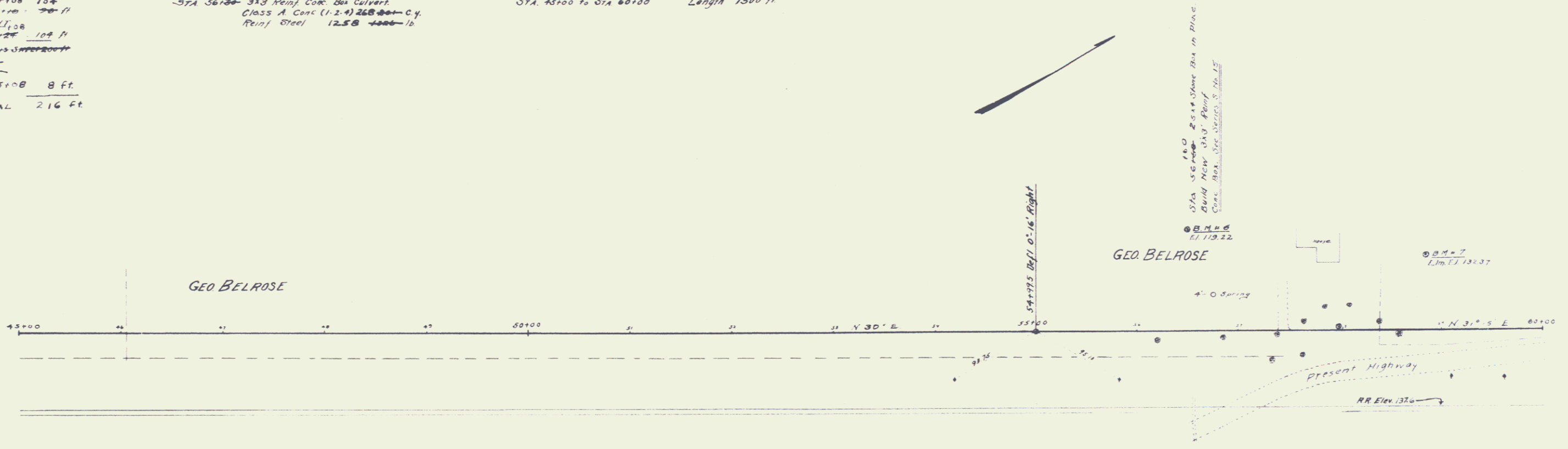
**SUB-BASE REQUIRED** STA 29100 to STA 45100 Length 1600 ft



**GUARD RAIL REQUIRED**  
 04 LEFT 104  
 STA 56100 to 57100 70 ft  
 104 RIGHT 104  
 STA 56120 to 57120 108 ft  
 TOTAL THIS APPROACH  
 LEFT  
 45+00 - 45+08 8 ft  
 TOTAL 216 ft

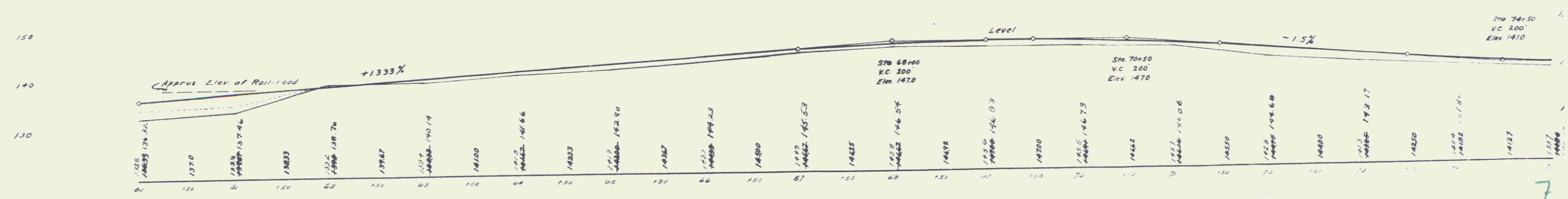
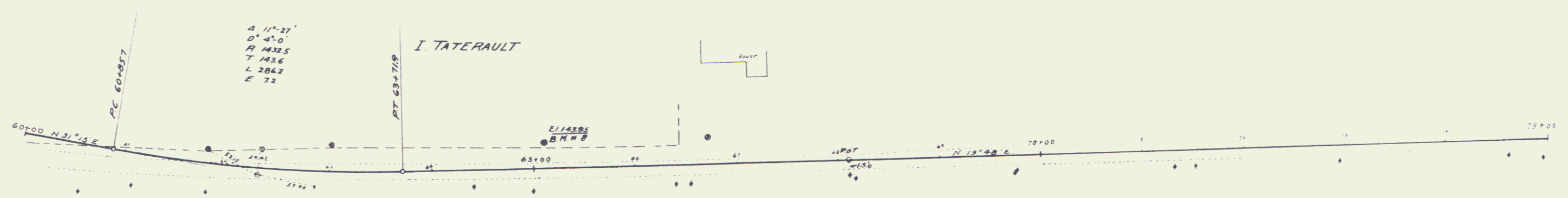
**NEW CULVERTS REQUIRED**  
 STA 56100 3x3 Reinf. Conc. Box Culvert  
 Class A Conc (1.2.4) 268 cu yd  
 Reinf. Steel 12.5 @ 4000-lb

**SUB-BASE REQUIRED**  
 STA. 45100 to STA 60100 Length 1500 ft





SUB-BASE REQUIRED  
STA 60+00 to STA 75+00 Length 1500 ft



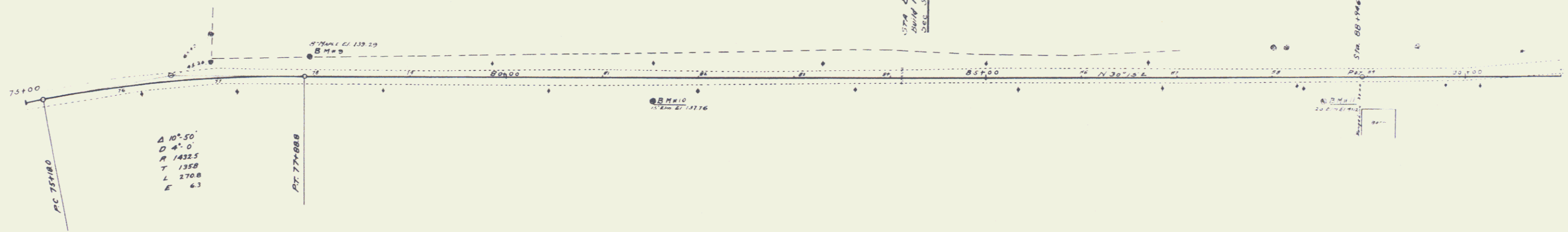
**GUARDRAIL REQUIRED**  
 LEFT  
 STA 03+39 to 04+23 24 FT  
 RIGHT  
 STA 03+39 to 04+23 24 FT  
 TOTAL THIS SHEET 48 FT

**NEW CULVERTS REQUIRED**  
 STA 04+11 15" Rein Concrete or Cast Iron Pipe Culvert Length 32 FT STA 75+00 to STA 91+00 Length 1600 FT  
 CLASS B Conc. U-25 @ 2.5% C.Y.  
 Rein. Steel 33 1k

**SUB-BASE REQUIRED**

STA 04+11 @ Curvature Point in Place  
 Build New 15" Rein Concrete or Cast Iron Pipe Culvert  
 SEE SHEETS 3 AND 15

STATE PROJECT YEAR  
 1 024 1986



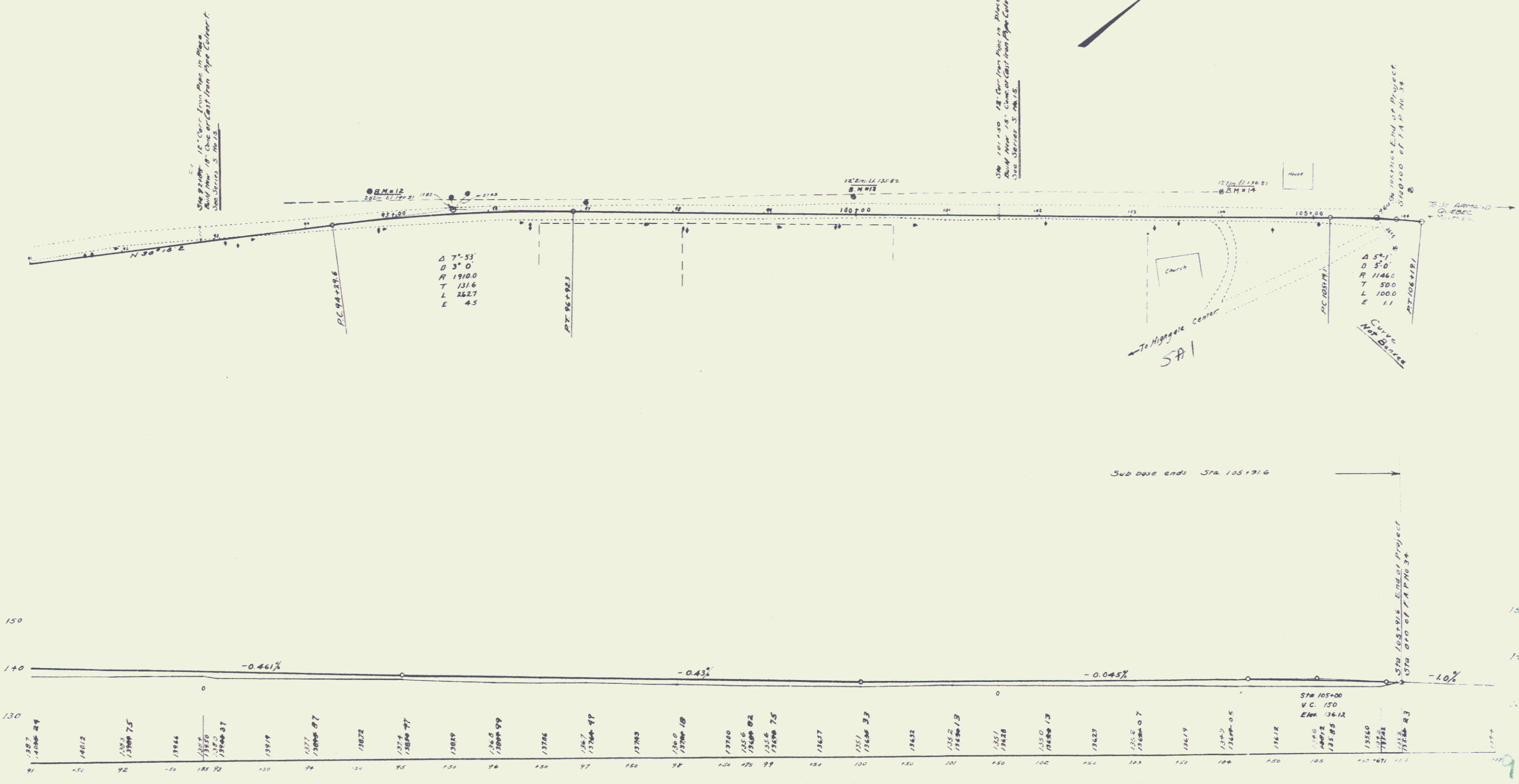
**GUARDRAIL REQUIRED**

STA 92+00	LEF 3101	24.0
STA 101+38	LEF 3101	24.0
STA 92+00	RIGHT 33+01	24.0
STA 101+38	RIGHT 33+01	24.0
TOTAL THIS SHEET		96.0

**NEW CULVERTS REQUIRED**

STA 92+00	18" Rein Concrete or Cast Iron Pipe Culvert Length 32 ft.	STA 91+00 to STA 105+31.6	Length 1451.6 ft.
Class B Conc. (1-3/4" 3:1 max 0.4)		Reinf. Steel 4/8 @ 18"	
STA 101+30	15" Rein Concrete or Cast Iron Pipe Culvert Length 32 ft.		
Class B Conc. (1-3/4" 3:1 max 0.4)		Reinf. Steel 4/8 @ 18"	

**SUB-BASE REQUIRED**



18" Rein Concrete or Cast Iron Pipe Culvert  
 Class B Conc. (1-3/4" 3:1 max 0.4)  
 Reinf. Steel 4/8 @ 18"

15" Rein Concrete or Cast Iron Pipe Culvert  
 Class B Conc. (1-3/4" 3:1 max 0.4)  
 Reinf. Steel 4/8 @ 18"

STA 105+31.6 END OF PROJECT  
 STA 91+00 OF F.A.P. NO. 34  
 STA 105+31.6 END OF PROJECT  
 STA 91+00 OF F.A.P. NO. 34