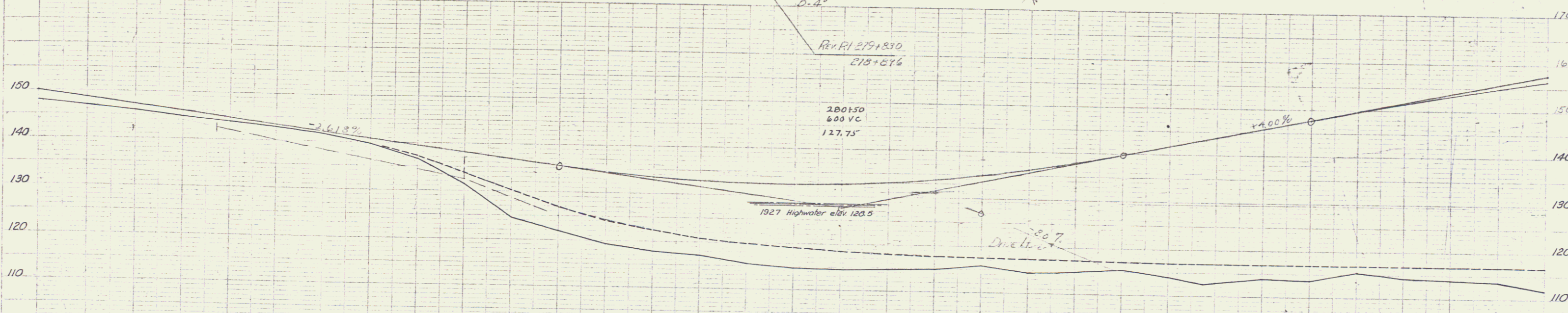
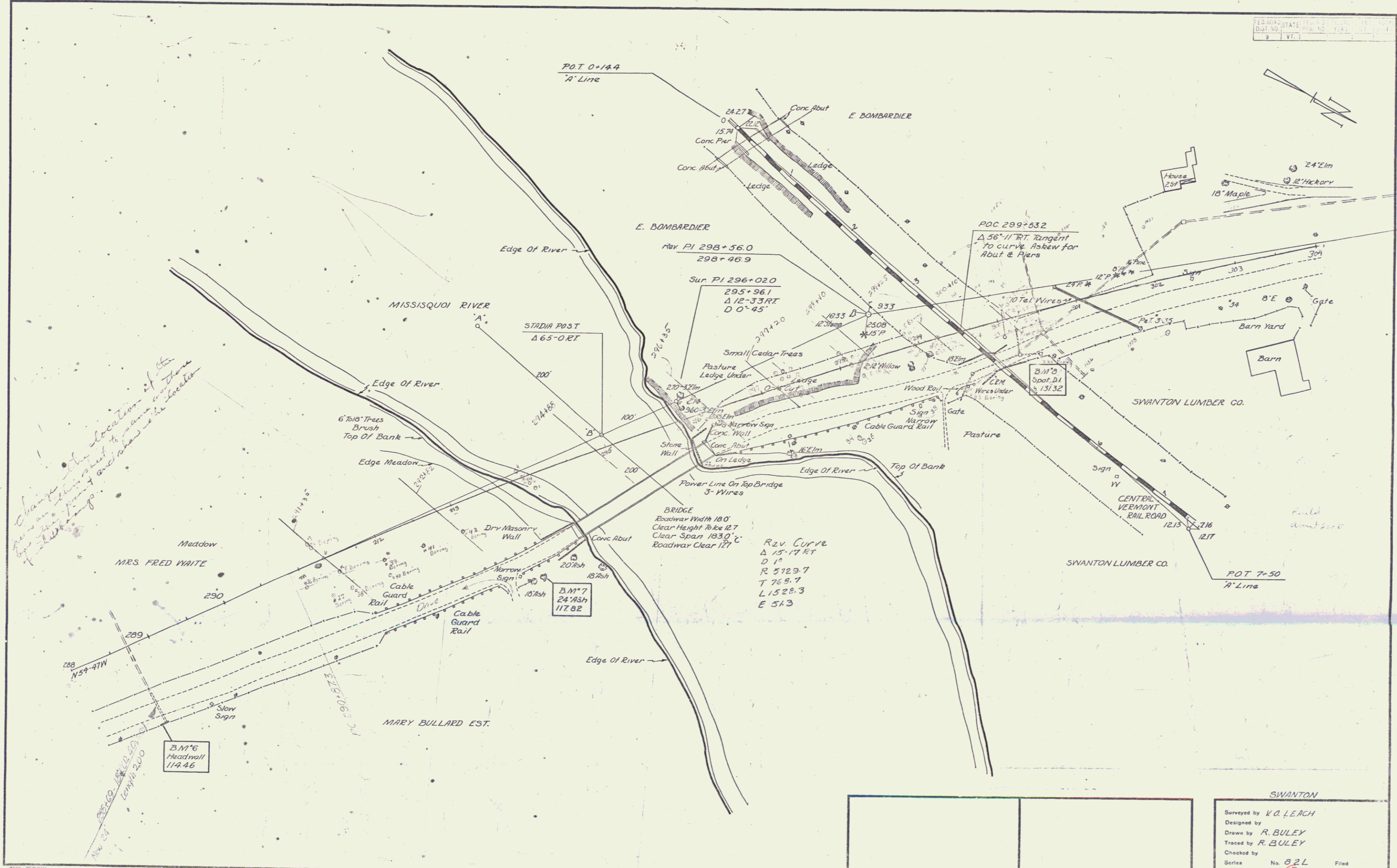


$\Delta 30-19LT$	$\Delta 50-19LT$
D 4	D 3-45
R 1432.7	R 1528.2
T 672.9	T 717.6
L 1257.9	L 1341.8
E 1501	E 1602



1479	1469	1459	1447	1439	1429	1417	1397	1366	131.3	124.4	122.0	1192	1179	117.1	115.7	114.3	114.7	114.3	114.9	115.9	114.4	114.5	114.5	114.0	112.9	114.0	113.8	115.6	114.2	114.0	113.7	111.9		
272	+50	273	+50	274	+50	275	+50	276	+50	277	+50	278	+50	279	+50	280	+50	281	+50	282	+50	283	+50	284	+50	285	+50	286	+50	287	+50	288	+50	289

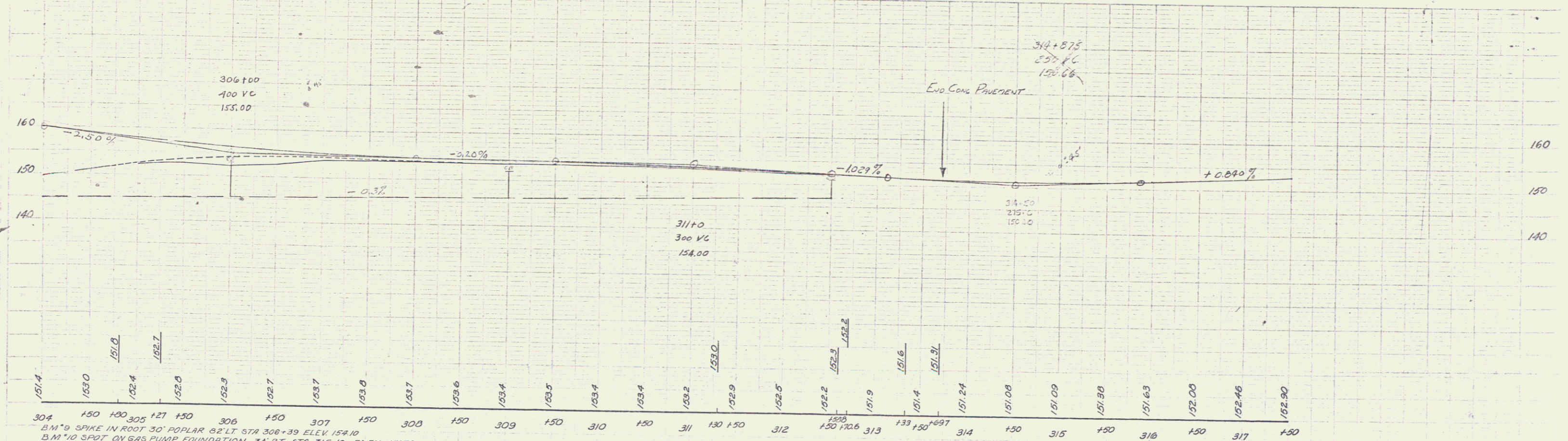
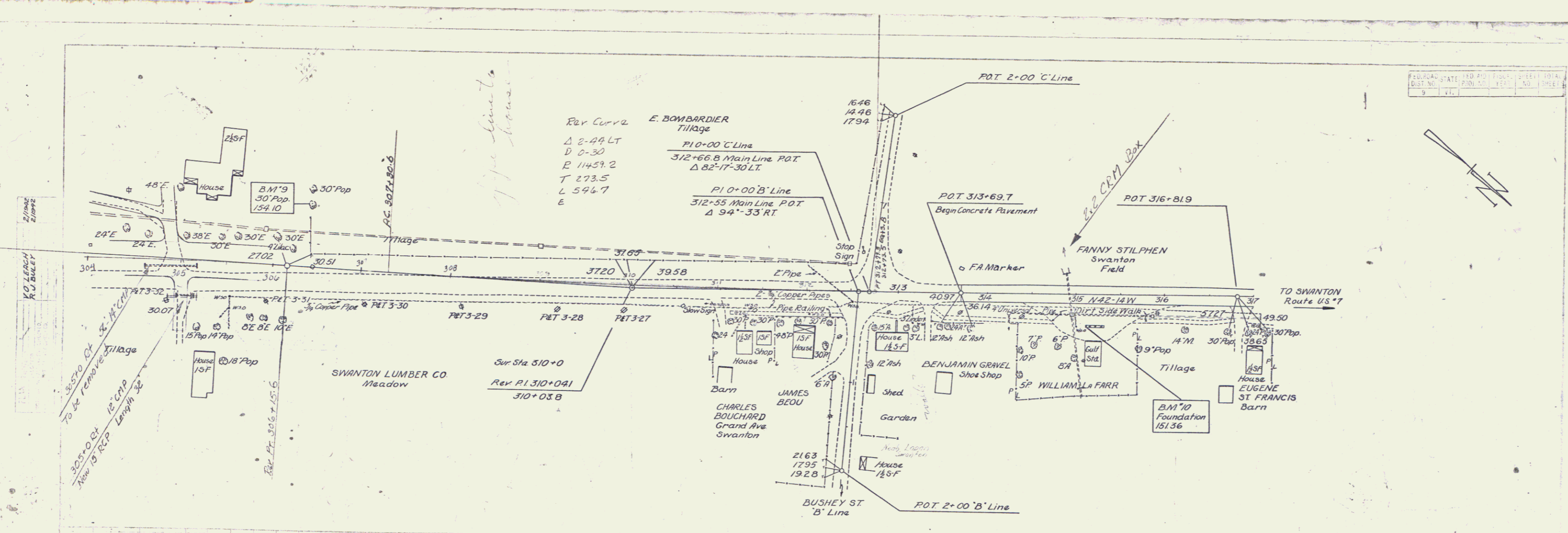
B.M.'s SPIKE IN ROOT 30' ELM 30' LT STA 274+38 ELEV 145.64
 B.M.'s SPIKE IN 24' STUMP 102' RT STA 277+29 ELEV 133.21
 B.M.'s SPOT ON HEADWALL 90' RT STA 282+79 ELEV 117.05



Change in location of the top of bank shown in this drawing is from 7 and shown in location of 1914.

REV. CURVE
 Δ 15-11 RT
 D 1'
 R 5129.7
 T 768.7
 L 1528.3
 E 51.3

SWANTON
 Surveyed by K.O. LEACH
 Designed by R. BULEY
 Traced by R. BULEY
 Checked by
 Series No. 82L
 Sheet 3 of 3
 Filed



304 151.4 150 153.0 150 152.4 150 152.0 150 152.7 150 153.7 150 153.0 150 153.7 150 153.6 150 153.4 150 153.5 150 153.4 150 153.4 150 153.2 150 153.0 150 152.9 150 152.5 150 152.2 150 152.2 150 152.2 150 152.2 150 151.9 150 151.6 150 151.6 150 151.4 150 151.24 150 151.08 150 151.09 150 151.80 150 151.63 150 152.00 150 152.46 150 152.90

BM *9 SPIKE IN ROOT 30' POPLAR 82' LT. STA 306+39 ELEV. 154.10
 BM *10 SPOT ON GAS PUMP FOUNDATION 34' RT. STA 315+40 ELEV. 151.36