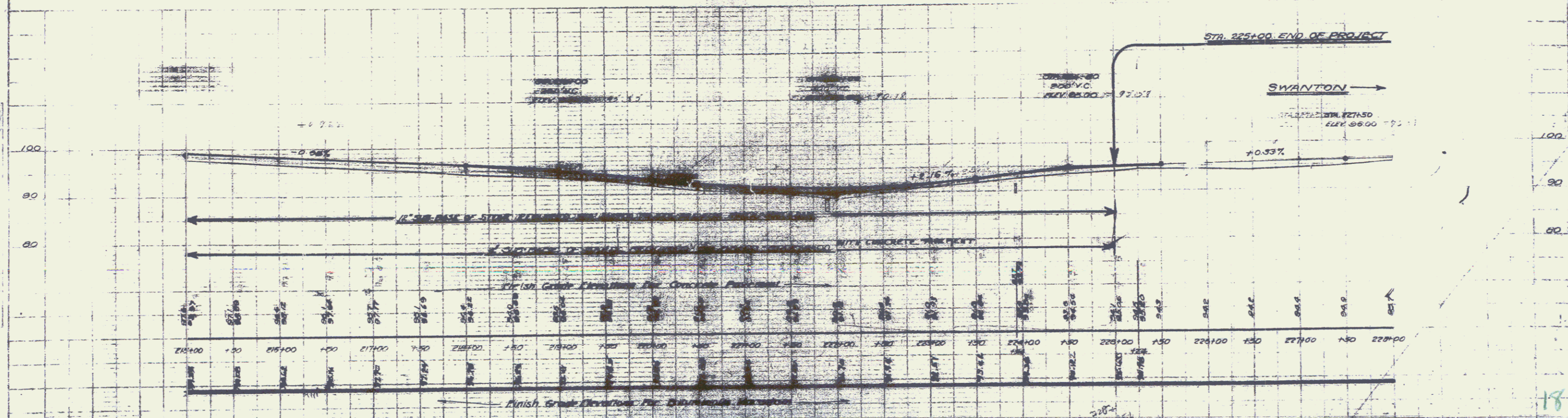
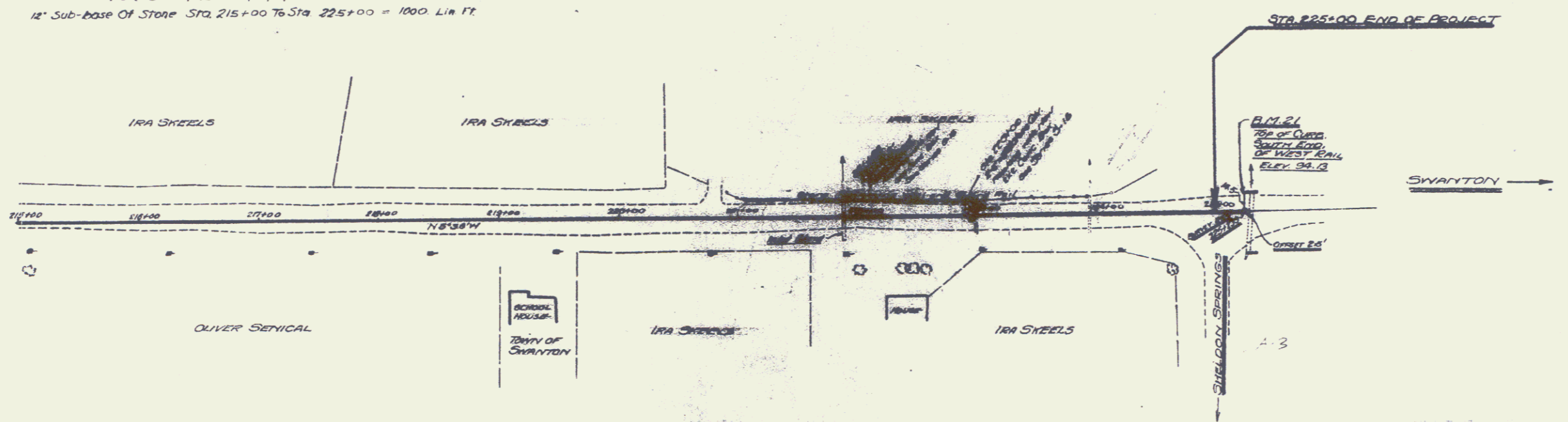


Sta 221+92.70 to Sta 225+00 - Length 440 ft.  
 RIGHT  
 Sta 221+76 to Sta 222+00 - Length 24 ft.  
 Sta 222+00 to Sta 223+12 - Length 24 ft.  
 TOTAL FOR SHEET - 488 ft.

Concrete Class A (12-4) - 12.1 cu yds.  
 Reinforcing Steel - 1216 lbs.  
 Sta. 223+00 - EKE Concrete Box Culvert  
 Concrete Class A (12-4) - 10.1 cu yds.  
 Reinforcing Steel - 806 lbs.

FOR CONCRETE PAVEMENT  
 4" SUB-BASE OF SAND - STA. 215+00 TO STA. 225+00 = 1000.0 LIN. FT.  
 FOR BITUMINOUS MACADAM  
 12" SUB-BASE OF STONE - STA. 215+00 TO STA. 225+00 = 1000.0 LIN. FT.



PLAN  
 SCALE: 1" = 40' HORIZONTALLY  
 1" = 10' VERTICALLY  
 DATE: 11/18/02  
 DRAWN BY: J.T. HARRINGTON  
 CHECKED BY: J.T. HARRINGTON  
 APPROVED BY: J.T. HARRINGTON

PROFILE  
 SCALE: 1" = 40' HORIZONTALLY  
 1" = 10' VERTICALLY  
 DATE: 11/18/02  
 DRAWN BY: J.T. HARRINGTON  
 CHECKED BY: J.T. HARRINGTON  
 APPROVED BY: J.T. HARRINGTON