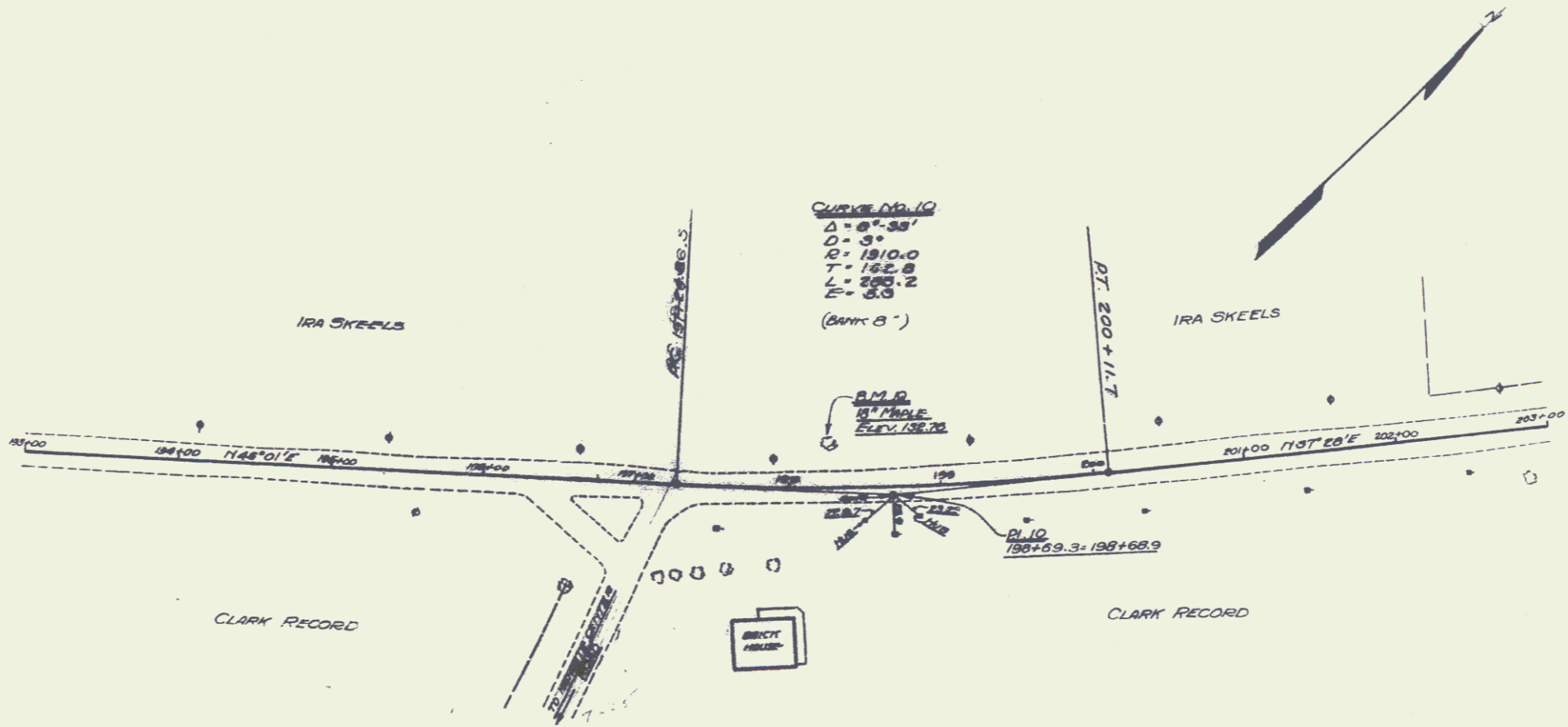


FOR CONCRETE PAVEMENT
 4" SUB-BASE OF SAND - STA. 193+00 TO STA. 203+00 = 1000 LIN. FT.

FOR BITUMINOUS MACADAM
 12" SUB-BASE OF Stone Sta. 193+00 TO STA. 203+00 = 1000 LIN. FT.



MEASUREMENTS
 L.T. HAMMERS
 12-28
 1957

12-28
 1957
 L.T. HAMMERS
 MEASUREMENTS

