

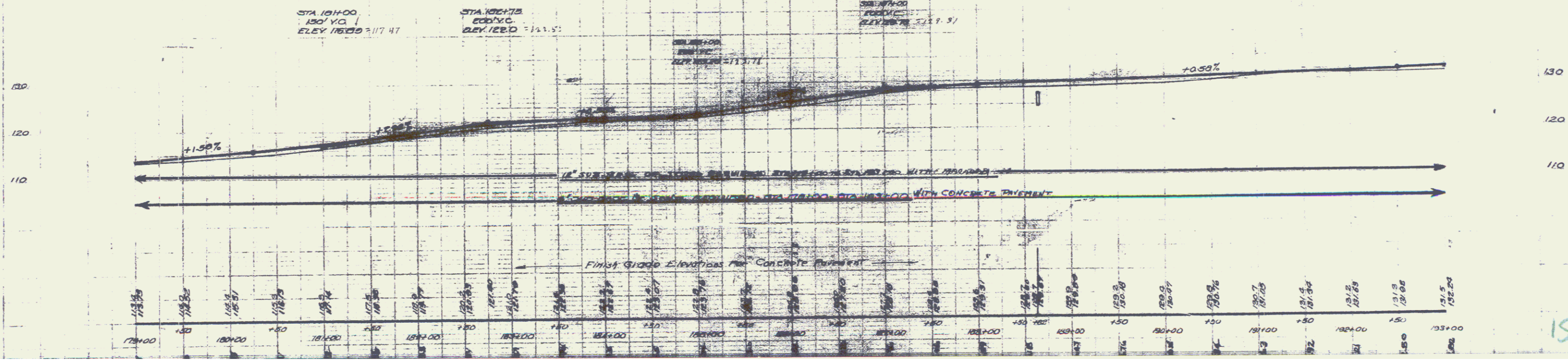
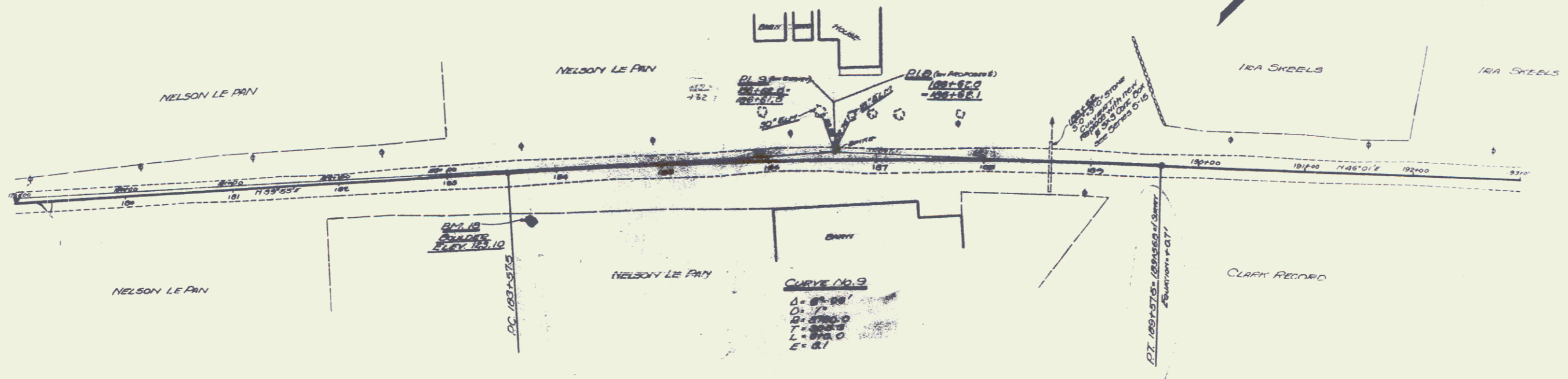
WOOD GUARD RAIL REQUIRED
 LEFT
 STA 179+00 to STA 180+80 - Length 80 ft
 100+80 to 100+74 - " 24"
 RIGHT
 STA 180+80 to STA 185+74 - Length 24 ft
 TOTAL FOR SHEET - 128 FT

NEW CULVERTS REQUIRED
 STA 180+82 - 3x3 CONCRETE BOX CULVERT
 Concrete Class A (F-1) - 14.2 cu yds
 Reinforcing steel - 250 lbs

FOR BITUMINOUS MACADAM
 12" SUB-BASE OF SAND - STA. 179+00 TO STA. 183+00 = 1400 L.H. FT.

FOR CONCRETE PAVEMENT
 4" SUB-BASE OF SAND - STA. 179+00 TO STA. 183+00 = 1400.0 L.H. FT.

PROJECT: STATE HIGHWAY 100A
 SHEET NO. 10
 DATE: 1957



M.C. CAMPBELL, P.E.

M.C. CAMPBELL, P.E.

PROJECT

15