

WOOD GUARD RAIL REQUIRED

LEFT
Sta 153+00 to Sta 154+12 - Length 82 feet
+ 151+00 + 152+12 = 24'

RIGHT
Sta 153+00 to Sta 154+12 - Length 24 feet
+ 151+00 + 152+12 = 24'

TOTAL FOR SHEET - 156 feet

FOR BITUMINOUS MACADAM
12" Sub-base of Stone Sta 153+00 to Sta 154+00 = 110.2 Lin Ft.
18" Sub-base of Stone Sta 154+00 to Sta 155+00 = 100

FOR CONCRETE PAVEMENT
4" SUB-BASE OF SAND - STA. 153+00 TO STA. 154+00 = 110.2 Lin Ft.
11" SUB-BASE OF SAND - STA. 154+00 TO STA. 155+00 = 110.2 Lin Ft.
2" SUB-BASE OF SAND - STA. 155+00 TO STA. 156+00 = 110.2 Lin Ft.

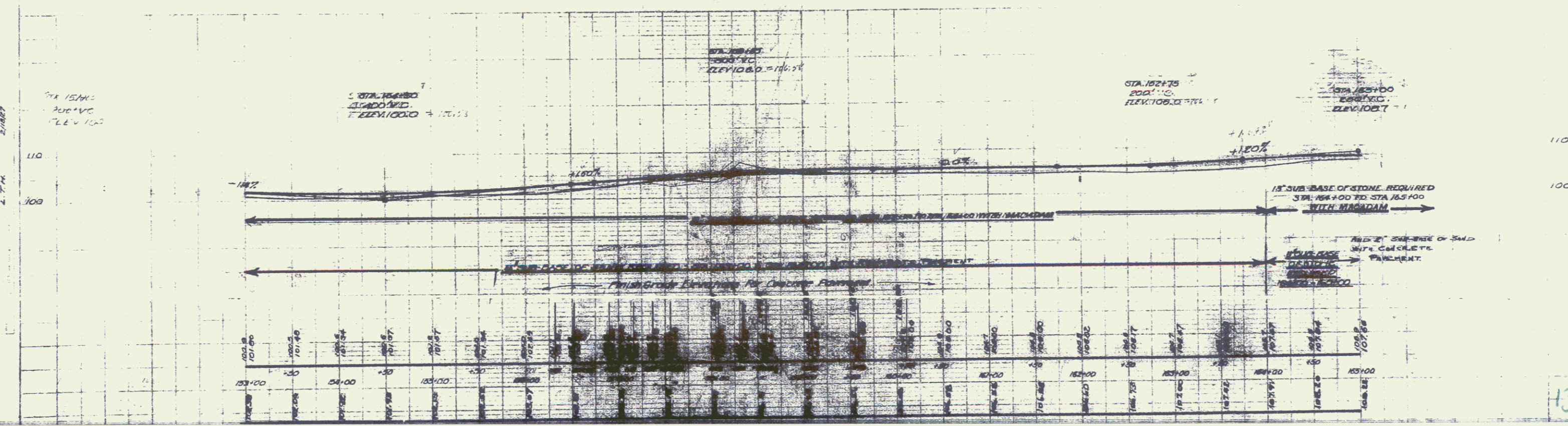
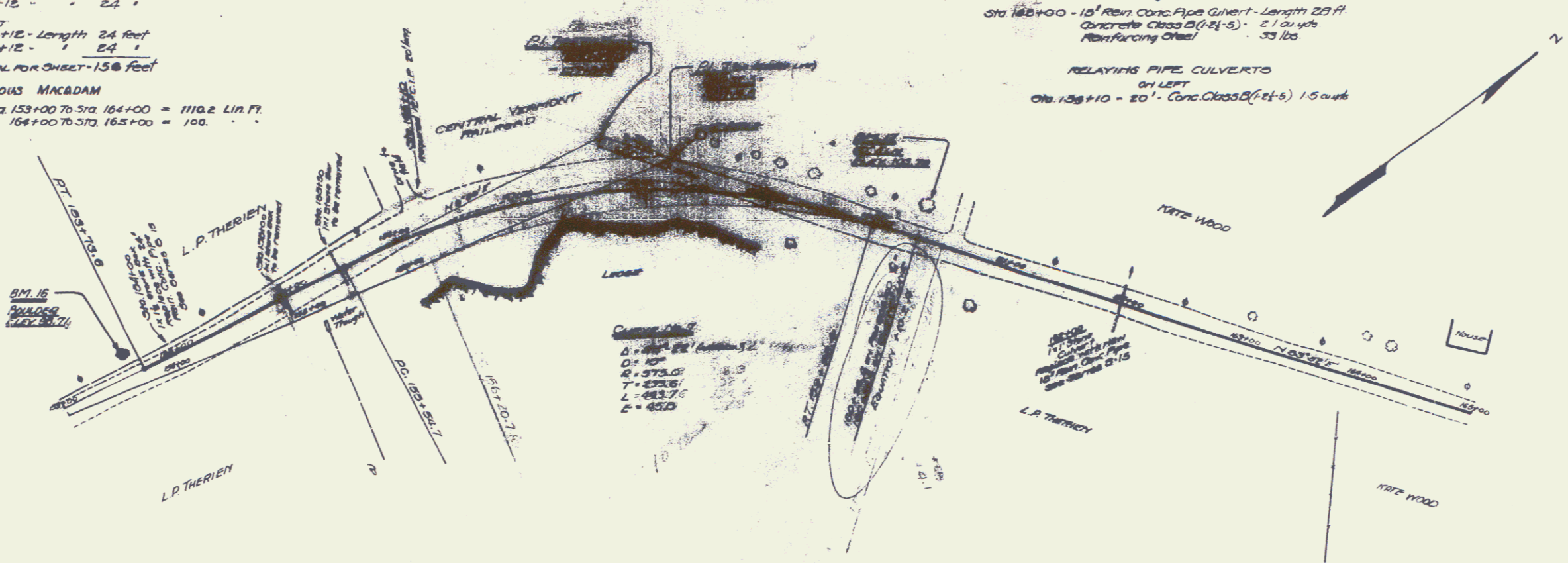
NEW CULVERTS REQUIRED

Sta. 154+00 - 24" Rein. Conc. Pipe Culvert - Length 20 ft.
Concrete Class B (f-24-s) - 4.1 cu yds
Reinforcing Steel - 33 lbs

Sta. 155+00 - 18" Rein. Conc. Pipe Culvert - Length 20 ft.
Concrete Class B (f-24-s) - 2.1 cu yds
Reinforcing Steel - 33 lbs

RELAYING PIPE CULVERTS ON LEFT
Sta. 155+10 - 20' - Conc. Class B (f-24-s) 1.5 cu yds

DATE: 11/15/54
DESIGN NO.: 117
PROJECT NO.: 122
SHEET NO.: 14



M.F. CHAMBERLAIN, INC.
 115 CHAMBERLAIN ST.
 WASHINGTON, D.C. 20007
 DATE: 11/15/54
 PROJECT NO.: 122
 SHEET NO.: 14