

**TRUCK CURVED BRILL REQUIRED**

**LEFT**

Sta. 107+00 to Sta. 107+20 Length 20 Ft.  
 • 107+00 - 107+08 - 100 -  
 • 107+08 - 107+20 - 200 -

**RIGHT**

Sta. 108+98 to Sta. 109+02 Length 24 Ft.  
 • 108+98 - 108+98 - 24 -  
 • 108+98 - 109+02 - 24 -

**TOTAL FOR SHEET 936 FT.**

**CULVERTS REQUIRED**

Sta. 103+66 15" Rivet Concrete Pipe Length 38 Ft.  
 Concrete Class B (1-2 1/2-5)  
 Reinf. Steel 33 lbs.

Sta. 106+36 24" Rivet Concrete Pipe Length 28 Ft.  
 Concrete Class B (1-2 1/2-5)  
 Reinf. Steel 33 lbs.

Sta. 108+90 15" Rivet Concrete Pipe Length 24 Ft.  
 Concrete Class B (1-2 1/2-5)  
 Reinf. Steel 33 lbs.

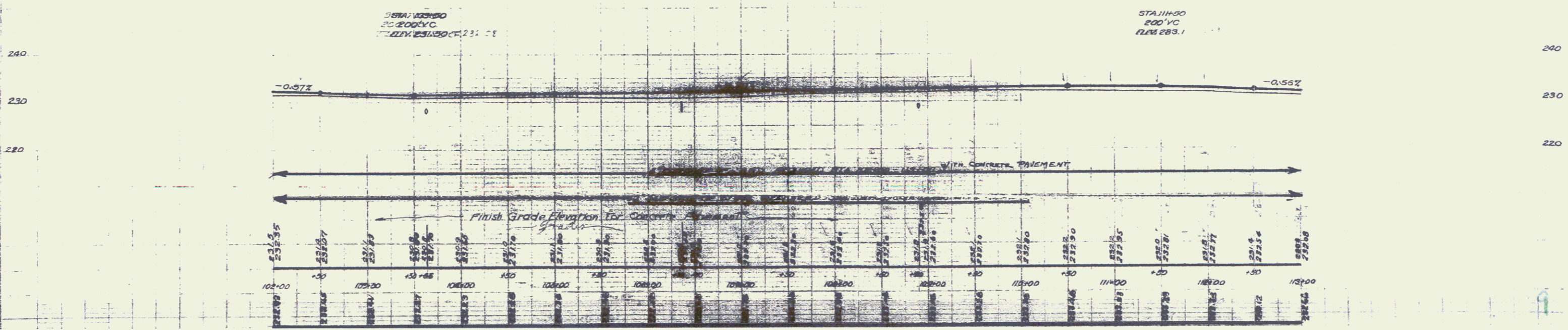
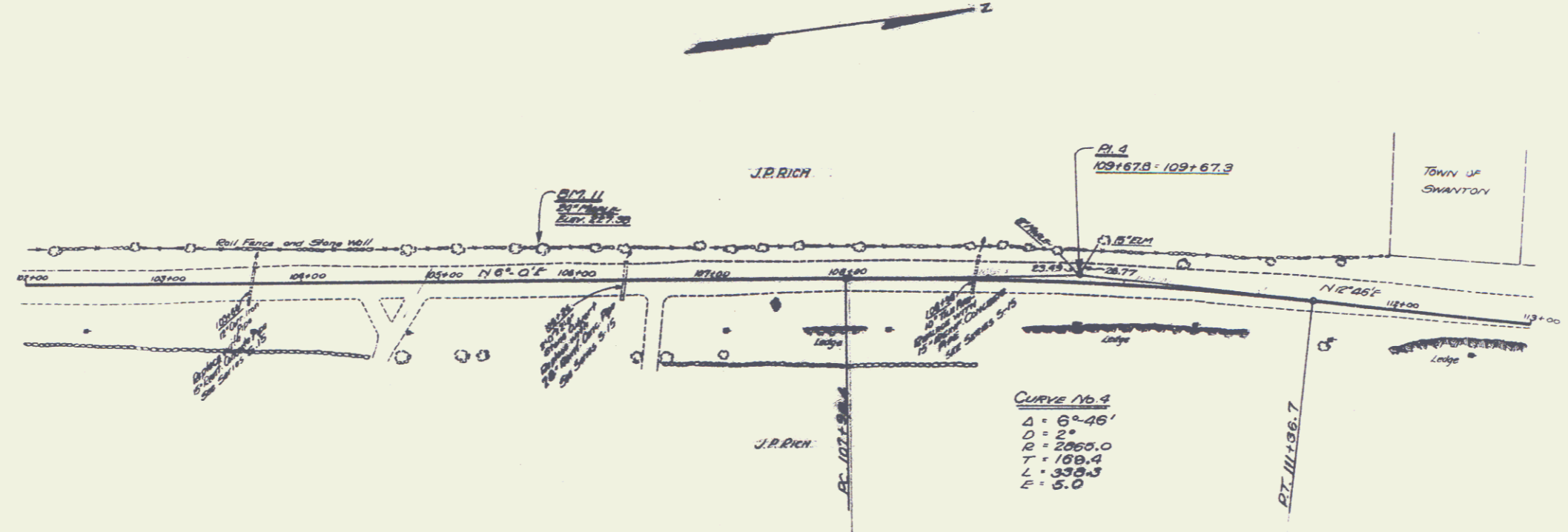
**FOR CONCRETE PAVEMENT**

4" Sub-base of Sand Sta. 102+00 to Sta. 110+00 = 1100 cu. yd.

**FOR BITUMINOUS MACADAM**

12" Sub-base of Stone Sta. 102+00 to Sta. 110+00 = 1100 cu. yd.

DIST. NO.	YEAR	PROJ. NO.	YEAR	SHEET NO.	TOTAL SHEETS
3	1928	1723	1723	3	3



J. R. RICH  
 11/10/27

J. R. RICH  
 11/10/27