

WOOD GUARD RAIL RA. W/RED

LEFT
 STA 83+38 to STA 83+60 Length 22 ft.
 " 89+01 " " 100+15 " 24 "
 " 101+20 " " 102+00 " 80 "

RIGHT
 STA 83+38 to STA 83+60 Length 22 ft.
 " 89+01 " " 100+15 " 24 "
 TOTAL for Street 176 ft.

NEW CULVERTS RECONSTRUCTED

Sta 83+49 15" Rein. Concrete Pipe Length 28 ft.
 Concrete Class B (1-1/2-5) 2.1 cu yds.
 Reinf. Steel 33 lbs.

Sta. 100+05 15" Rein. Concrete Pipe Length 28 ft.
 Concrete Class B (1-1/2-5) 2.1 cu yds.
 Reinf. Steel 33 lbs.

REPLACING PIPE CULVERTS

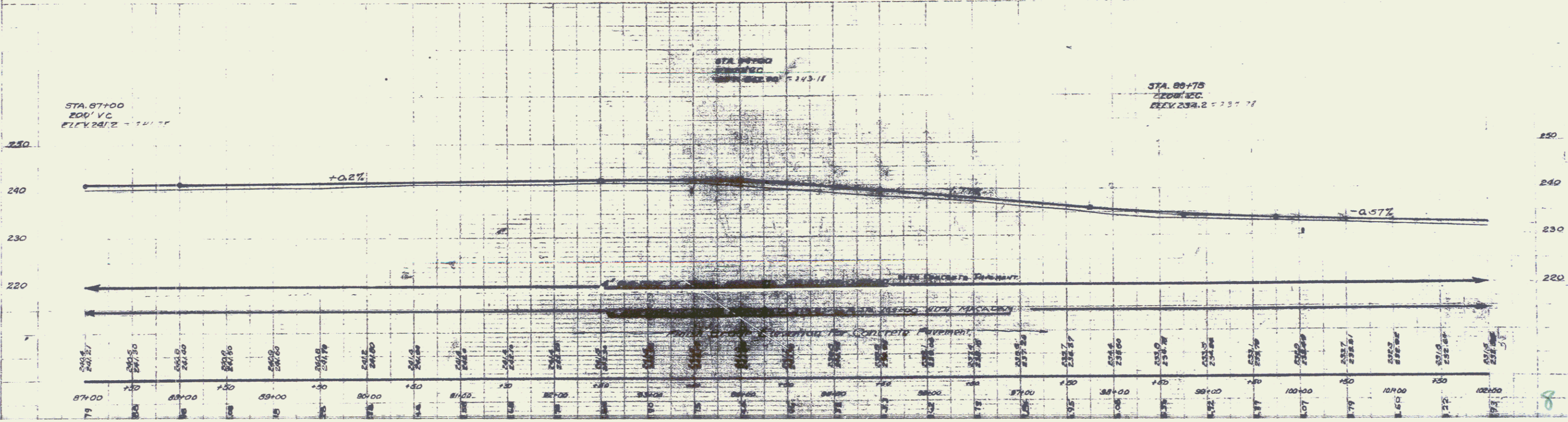
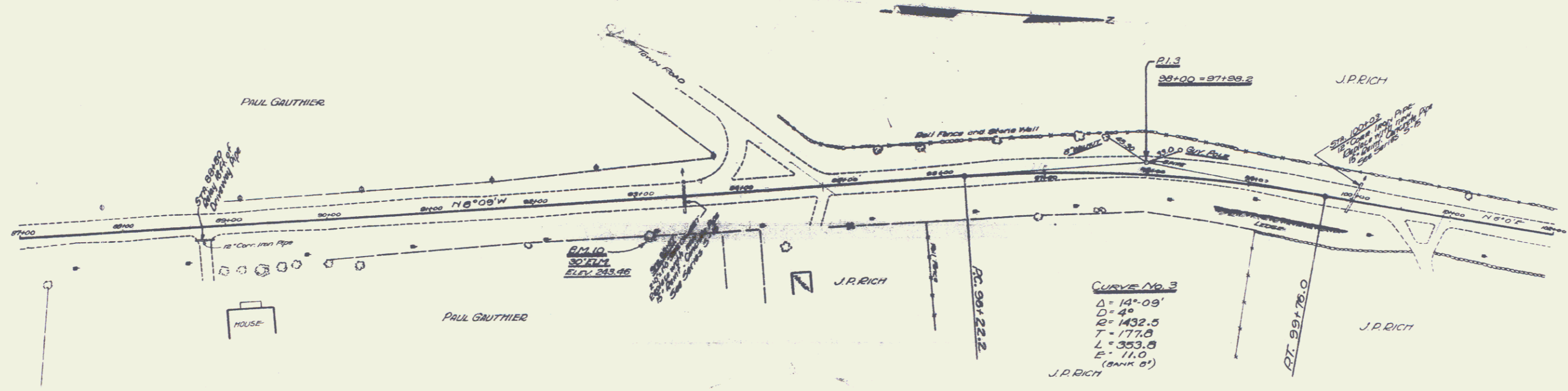
Sta 88+30 to 88+30 Length 10 ft.
 Rein. Class B (1-1/2-5) 1.5 cu yds.

FOR CONCRETE PAVEMENT

4" Sub-base of Sand Sta 87+00 to Sta 102+00 = 1500 L.V.

FOR BITUMINOUS MACADAM

18" Sub-base of Stone Sta 87+00 to Sta 102+00 = 1500 L.V.



M.E. CHERRY, P.E. L.T. H. 11/1/87

M.E. CHERRY, P.E. L.T. H. 11/1/87