

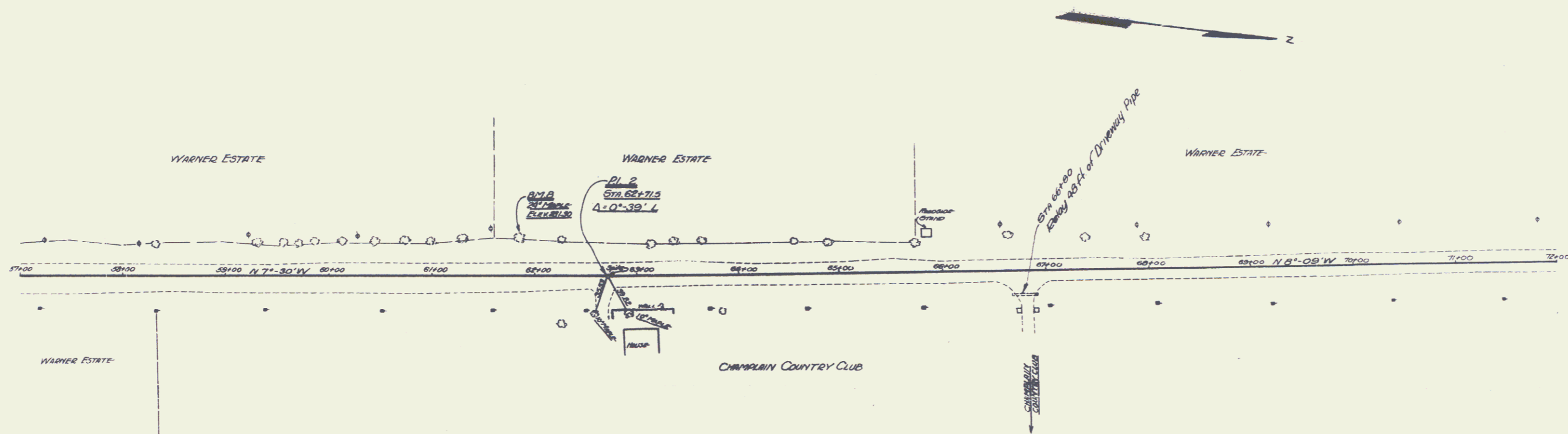
RELAYING PIPE CULVERTS  
Sta 66+80 Right 48 FT.  
Concrete Class B (1-1/2%) 15 cu yds.

FOR CONCRETE PAVEMENT:  
4' Sub-base of Sand Sta. 57+00 to Sta. 72+00 = 1500 LIN. FT.

FOR BITUMINOUS MACADAM  
12' Sub-base of Sand Sta. 57+00 to Sta. 72+00 = 1500 LIN. FT.

DATE	STATE	FED. AID	SCALE	PROJECT
11/15/77	VT.	103-C	1"=30'	1977

1/2" CONCRETE PIPE  
 12" DIAMETER  
 12' LENGTH



1/2" CONCRETE PIPE  
 12" DIAMETER  
 12' LENGTH

