

INDEX OF SHEETS

SHEET NO. 1	TITLE PAGE
" 2	TYPICAL CROSS-SECTION OF IMPROVEMENT (CONCRETE)
" 3	" " " " (MACADAM)
" 4	PLAN AND PROFILE STA. 0+60 TO 12+00
" 5	" " " " " " 12+00 " 24+00
" 6	" " " " " " 24+00 " 34+50
" 7 TO 8	CROSS SECTION SHEETS

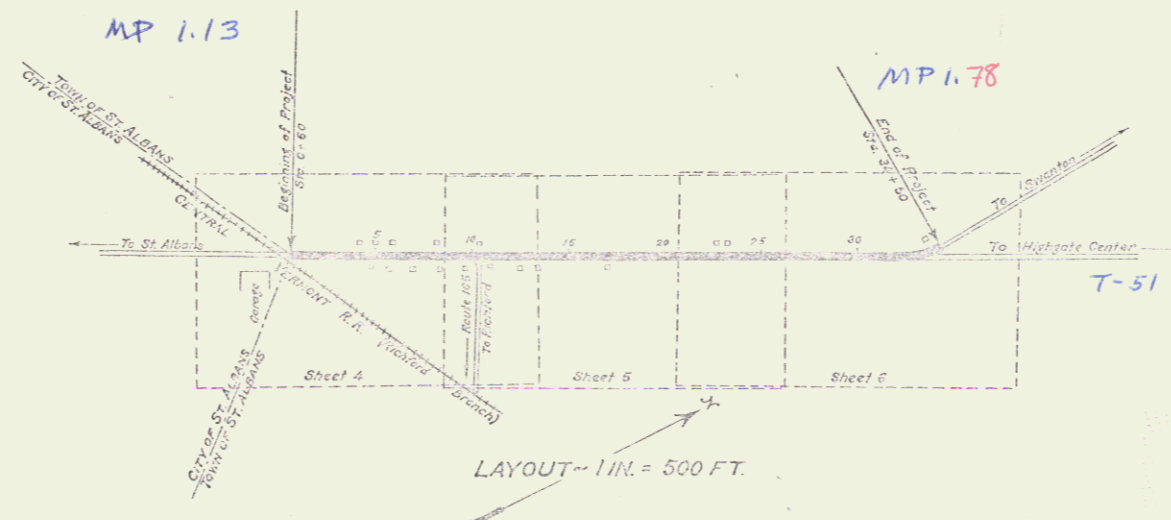
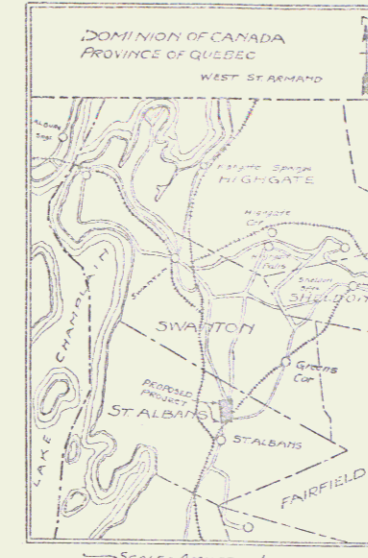
STATE OF VERMONT
STATE HIGHWAY DEPARTMENT

PLAN AND PROFILE OF PROPOSED
STATE HIGHWAY
FEDERAL AID PROJECT

TOWN OF ST. ALBANS Pin# 99R393

ST. ALBANS-SWANTON ROAD
FROM ST. ALBANS CITY LIMITS NORTH 0.642 MILES
LENGTH OF PROJECT 3390.0 FT.=0.642 MILES

SCALES { PLAN 1 IN. = 50 FT.
PROFILE HOR. 1 IN. = 50 FT. - VERT. 1 IN. = 10 FT.
CROSS SECTIONS 1 IN. = 5 FT.



CONVENTIONAL SIGNS

COUNTY LINE	GROUND ELEVATION	DATUM	LINE
TOWN LINE	GRADE ELEVATION	DATUM	LINE
FENCE LINE			
STONE WALL			
UNFENCED PROPERTY			
GUARD RAIL			
TRAVELED WAY			
RAILROAD			
RETAINING WALL			
CENTER LINE			
SURVEY LINE			
CULVERT			
DROP INLET			
TROLLEY POLE			
POWER POLE			
TELEPHONE POLE			
TREES			
HEDGE			

CURVE DATA

DEFLECTION ANGLE	Δ
DEGREE OF CURVE	D
RADIUS OF CURVE	R
TANGENT DISTANCE	T
LENGTH OF CURVE	L
EXTERNAL DISTANCE	E
POINT OF INTERSECTION	P.I.
POINT OF CURVE	P.C.
POINT OF TANGENT	P.T.
POINT ON TANGENT	P.O.T.

This project to be constructed in accordance with Standard Specifications on file with the U. S. Bureau of Public Roads as approved July 7, 1926, except for Bituminous Macadam Surface Course, Item 22, for which revised specifications have been submitted to the Bureau of Public Roads.

All structures on this project to be constructed in accordance with details given on Standard Structure Details, Series S, Nos. 17, 18 and 19.

RIGHT-OF-WAY DIVISION
TOWN FILE
PERPETUAL
Town of US7
(To Be Returned To R.O.W. Division)

THESE PLANS SUBJECT TO SUCH REVISIONS AS MAY BE REQUIRED BY THE BUREAU OF PUBLIC ROADS OR THE CHIEF ENGINEER.

APPROVED: 3/10/1928
March 10 1928
Submitted by ORDER OF THE STATE HIGHWAY BOARD
March 10 1928
COMMISSIONER OF HIGHWAYS

RECOMMENDED
RECOMMENDED FOR APPROVAL
APPROVED

project No. F 82D

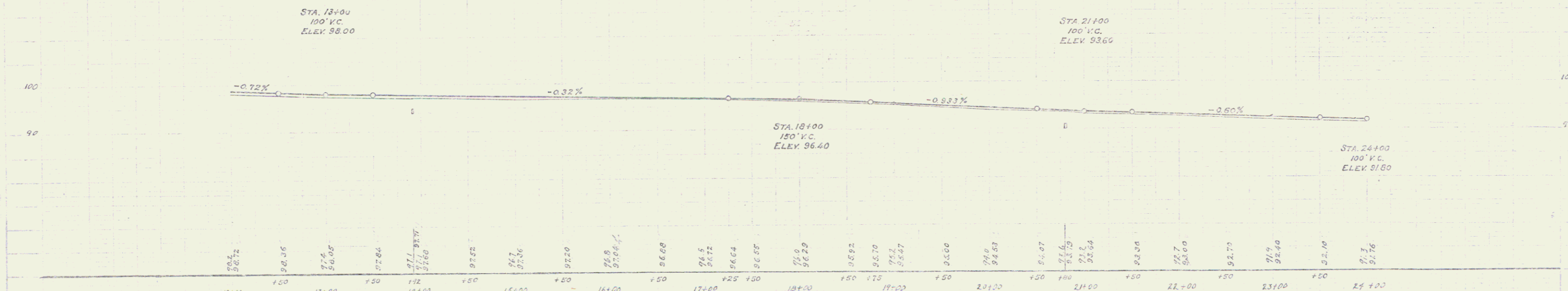
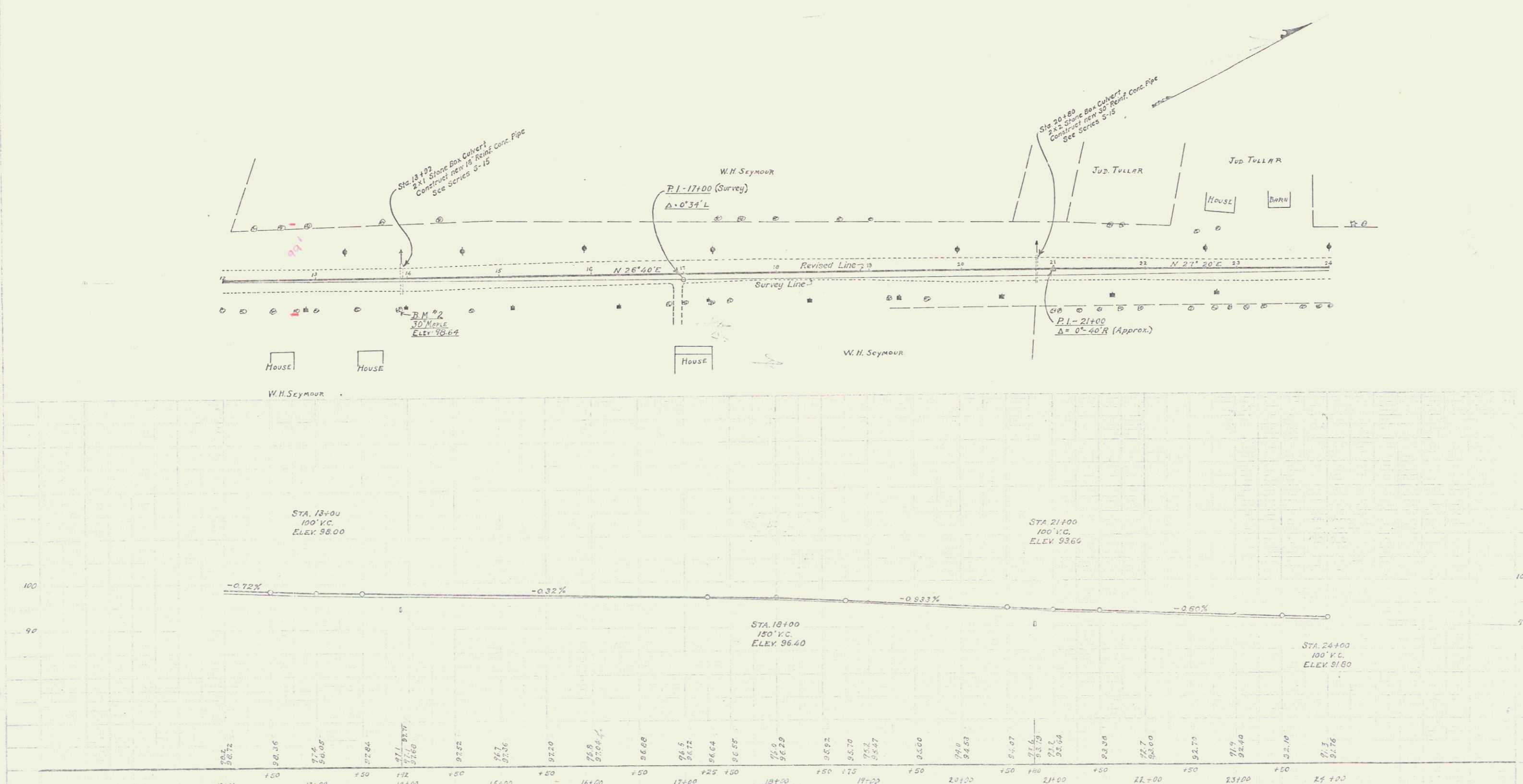
STEARNS R. JENKINS = US7

SERIES F NO. 82D FILED
SHEET 0 OF 8

WOOD GUARD RAIL REQUIRED
LEFT
 Sta. 13+00 To 13+94 Length 24 ft.
 - 20160 To 20182 " 24 ft.
RIGHT
 Sta. 13+00 To 14+04 Length 24 ft.
 - 20160 To 20182 " 24 ft.

NEW CULVERTS REQUIRED
 Sta. 13+92, 18" Rein. Conc. Pipe, 32 lin ft.
 Concrete Class A (1-2-4) 1.9 cu yds
 Reinforcing Steel 60 pounds
 Sta. 20+60, 30" Rein. Conc. Pipe, 32 lin ft.
 Concrete Class A (1-2-4) 3.5 cu yds
 Reinforcing Steel 66 pounds

VER. AND DIST. NO.	DATE	FILE NO.	BY	CHECKED	TOTAL SHEETS
5	1/27	650	2025	2	3

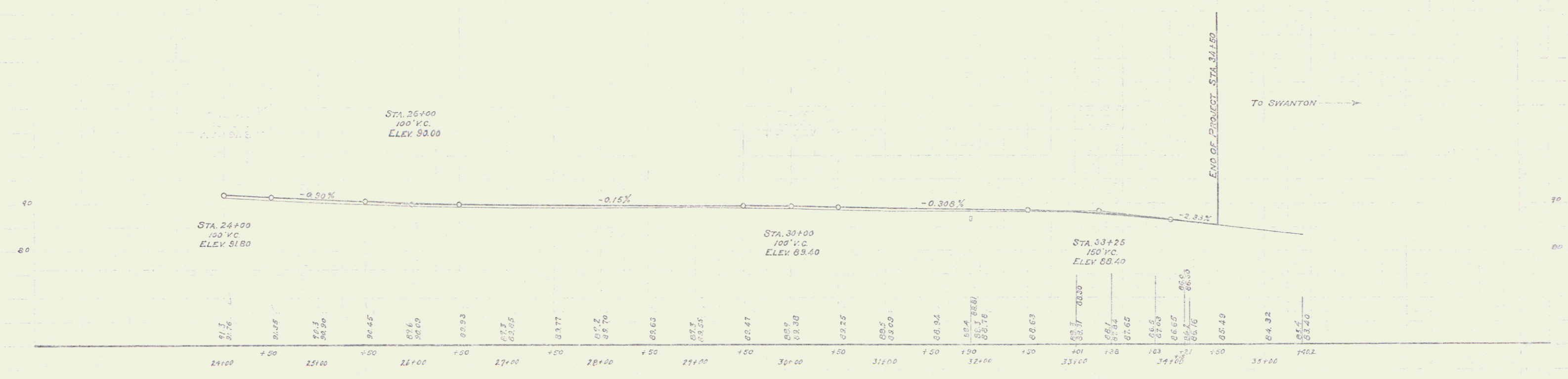
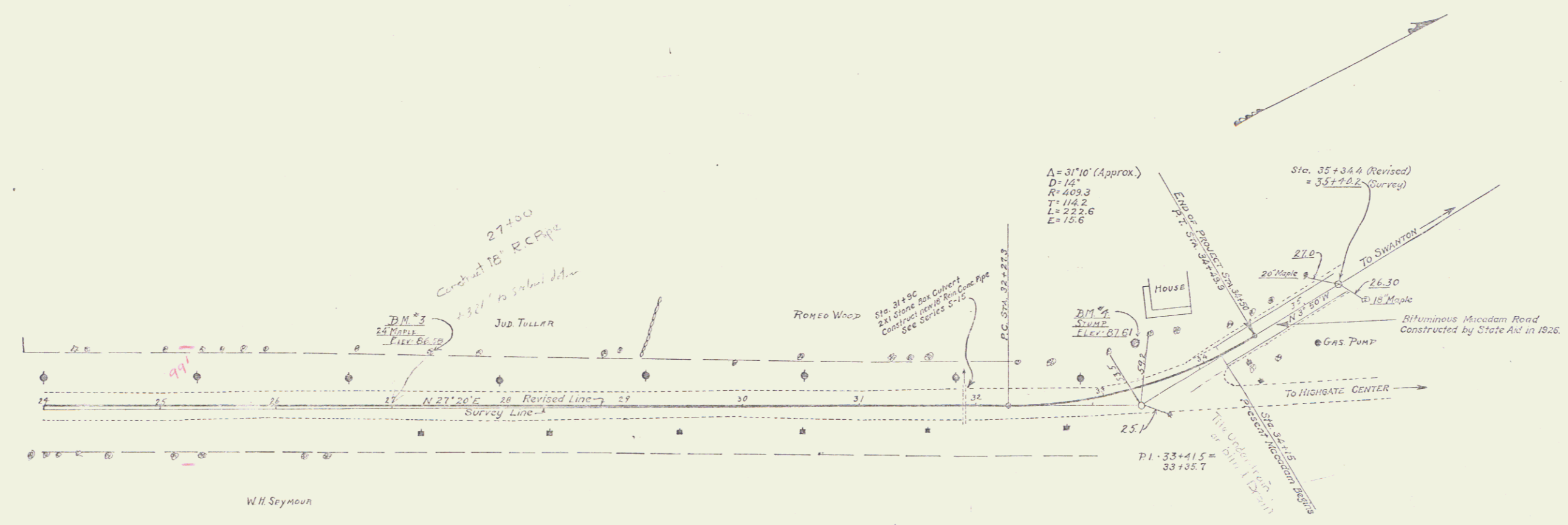


B.M. #2 Splice in root of 30" Maple, right of Sta. 13+95 - Elev. 96.64

WOOD GUARD RAIL REQUIRED
 STA. 31+76 TO 32+02 Length 24 Ft.
 RIGHT
 Sta. 31+76 TO 32+02 " 24 Ft.

NEW CULVERTS REQUIRED
 Sta. 31+80, 10" Rein. Concrete Pipe 32 1/2 ft.
 Concrete Class A, (1-2-4) 18 cu. yds.
 Reinforcing Steel 60 pounds

FED. AID DIST. NO.	STATE	FED. AID FISCAL YEAR	SHEET NO.	TOTAL SHEETS
5	VT.	62D	152B	6



B.M. # 3 Spike in root of 24" Maple, left of Sta. 27+50 - Elev. 86.58
 B.M. # 4 Grump, left of Sta. 33+25 - Elev. 87.61

SERIES F No. 62D
 SHEET 8 OF 9

TRACED BY: JWS 4