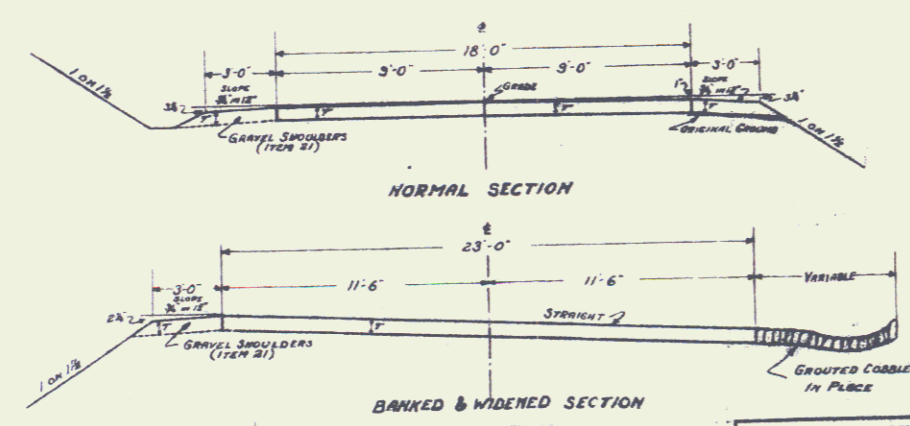
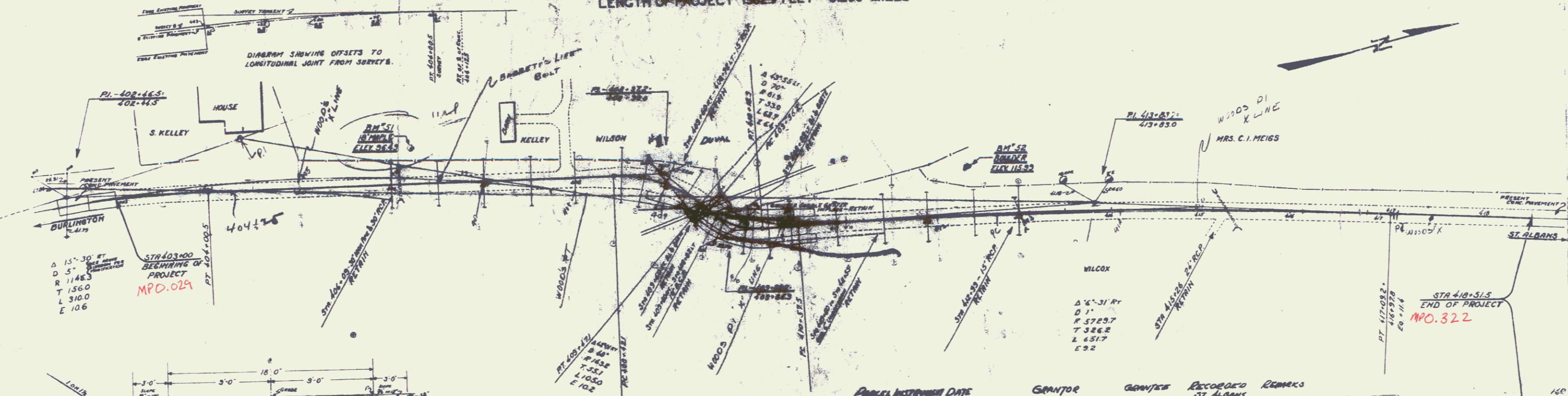


INDEX OF SHEETS
 1. TITLE, TYPICAL & PLAN & PROFILE
 2. DETAILS OF CONSTRUCTION
 3-4 CROSS SECTIONS

TOWN OF ST. ALBANS
 DUBLINGTON ST. ALBANS ROAD
 ONE COURSE CEMENT CONCRETE PAVEMENT
 LENGTH OF PROJECT 1823 FEET - 0.266 MILES

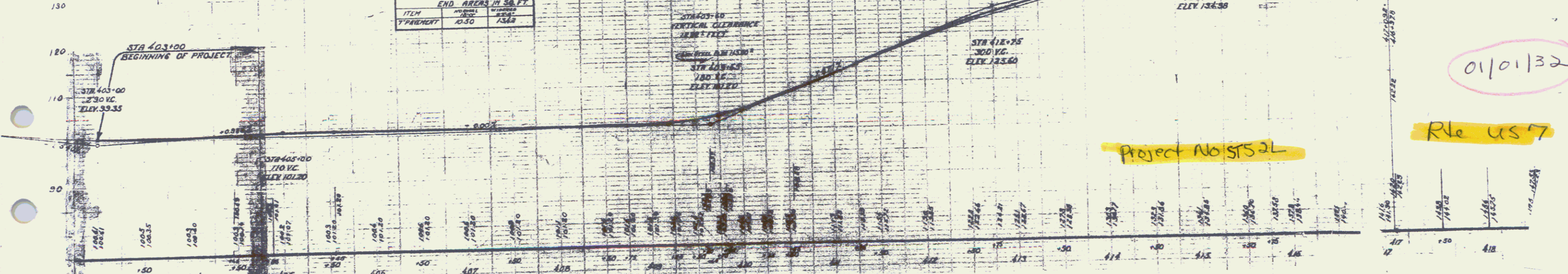
SUMMARY OF QUANTITIES

| | | | |
|--------------|-------------------------------------|-----|------------------------------------|
| ITEM # 10-11 | COMMON EXCAVATION INCLUDING BASEDUM | 500 | CY |
| " 21 | CURB SHOULDER | 200 | LF |
| " 23 | ONE COURSE CEMENT CONCRETE PAVEMENT | 636 | LSYD, INCLUDING 13 CURB EXCAVATION |



| ITEM | END AREA IN SQ. FT. |
|----------|---------------------|
| PAVEMENT | 10.50 |
| | 15.48 |

| APPROX. INSTALLED DATE | GRANTOR | GRANTEE | RECORDED | REMARKS |
|------------------------|--------------------------------|------------|----------|----------|
| 1912 | R.C.O. RENT ON DUBLINGTON ROAD | ST. ALBANS | 11-21-31 | RECORDED |



Pin# 9912390

01/01/32

Rle us 7

Project No: STS 2L