

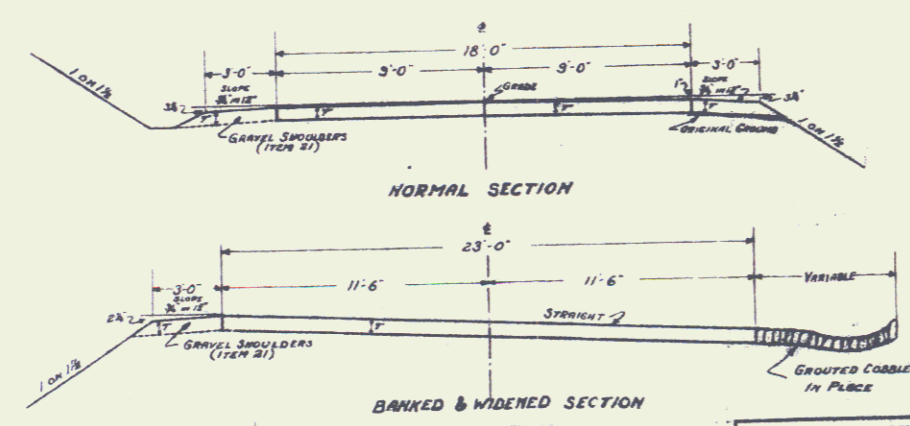
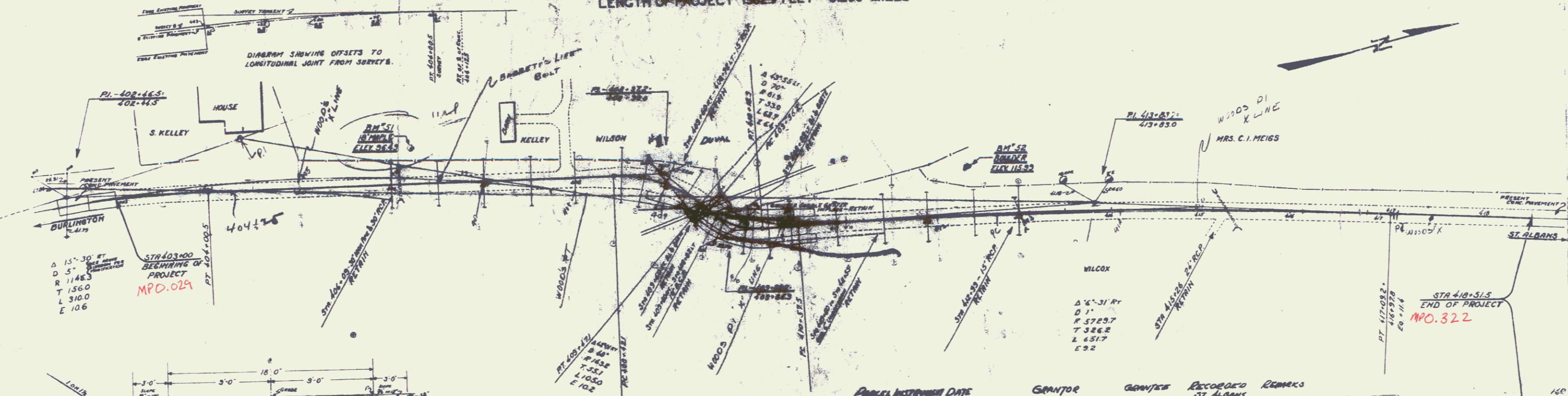
INDEX OF SHEETS
 1. TITLE, TYPICAL & PLAN & PROFILE
 2. DETAILS OF CONSTRUCTION
 3-4 CROSS SECTIONS

TOWN OF ST. ALBANS
 DUBLINGTON ST. ALBANS ROAD
 ONE COURSE CEMENT CONCRETE PAVEMENT
 LENGTH OF PROJECT 1823 FEET - 0.266 MILES

SUMMARY OF QUANTITIES

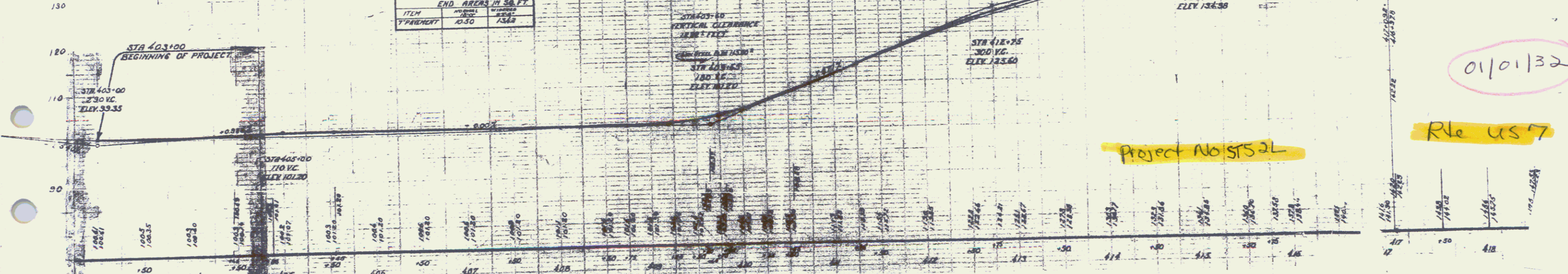
ITEM #	DESCRIPTION	QUANTITY
10-11	COMMON EXCAVATION INCLUDING BASEDUM	500
11	CURB SHOULDER	200
12	ONE COURSE CEMENT CONCRETE PAVEMENT	636

6.4 YDS. INCLUDING 13 CURB EXCESS



ITEM	END AREA IN SQ. FT.
PAVEMENT	10.50
	15.48

APPROX. INSTALLED DATE	GRANTOR	GRANTEE	RECORDED DATE	REMARKS
1912	R.C.O. RENT ON DUBLINGTON ROAD	ST. ALBANS	7-28-14	11-21-31 RECORDED



Pin# 9912390

01/01/32

Rle us 7

Project No: STS 2L