

Removal & Disposal of
Present Guard Rail from 549
400+55-403+43 Rt
402+53-405+43 Rt
410+23-412+00 Rt
411+20-412+00 Lt

Construct Drives
399+42 Lt
400+92 Lt
399+00 Rt

Three Cable Guard Rail w/Steel Posts, Item 542
401+75-402+23 Lt 401+75-402+23 Rt
402+57-403+57 Lt 403+77-407+77 Rt
411+57-412+00 Lt 410+49-411+05 Rt

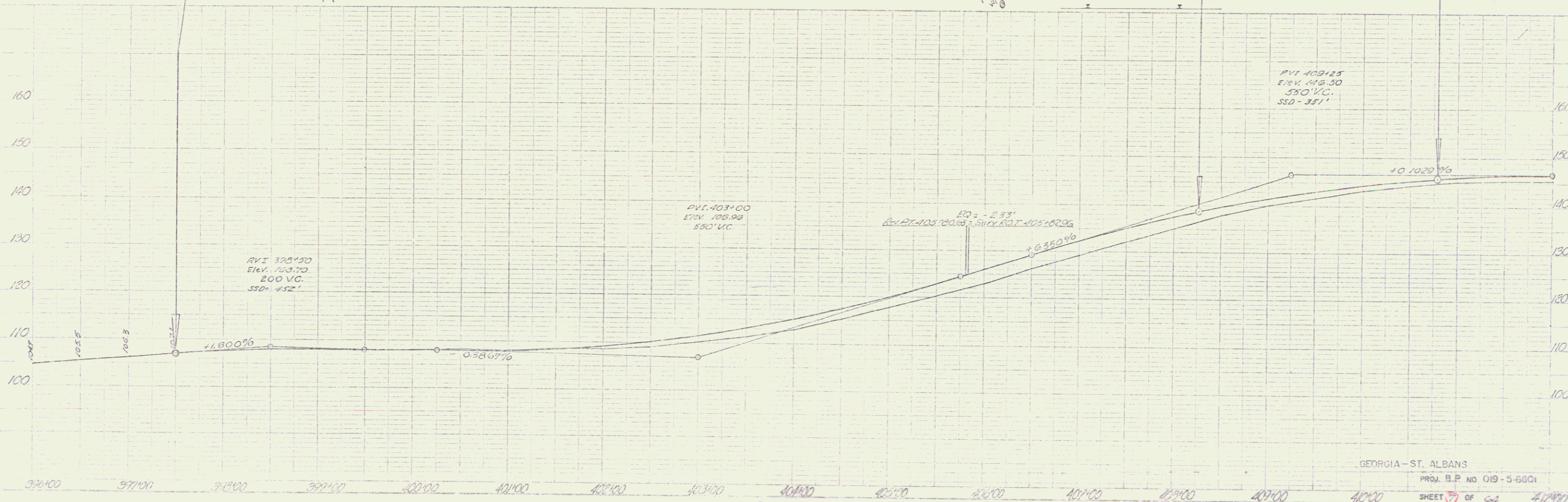
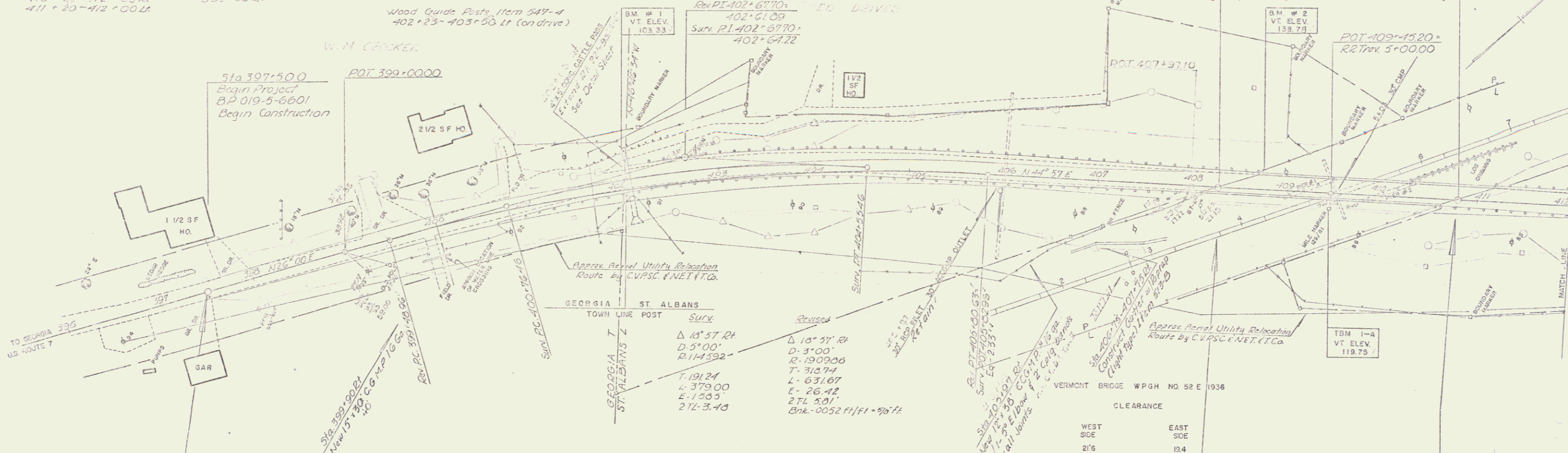
Wood Guide Posts, Item 547-4
402+23-403+50 Lt (on drive)

Stone Fill (light type) Item 512
404+25-407+25 Lt
411+35-412+00 Lt

Channel Excavation of Earth
Item 108-A
404+25 Lt - 407+50 Lt

Bituminous Concrete Curb, Item 555
Sta. 404+91-407+77 Rt
Sta. 405+21.0
Stop Roadway Begin Bridge

Sta. 410+79.0
End Bridge Resume Roadway



GEORGIA - ST. ALBANS
PROJ. B.P. NO. 019-5-6601
SHEET 3 OF 6
4/2/90

5