

STATE OF VERMONT
DEPARTMENT OF HIGHWAYS

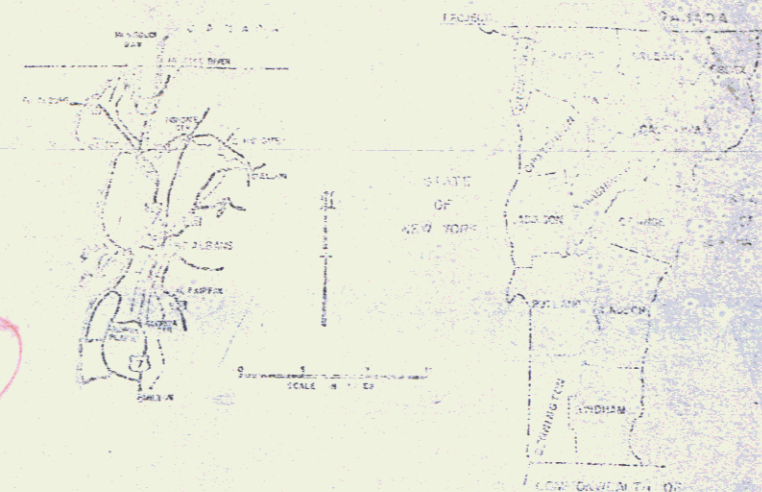
RESURVEY

GEORGIA-ST. ALBANS

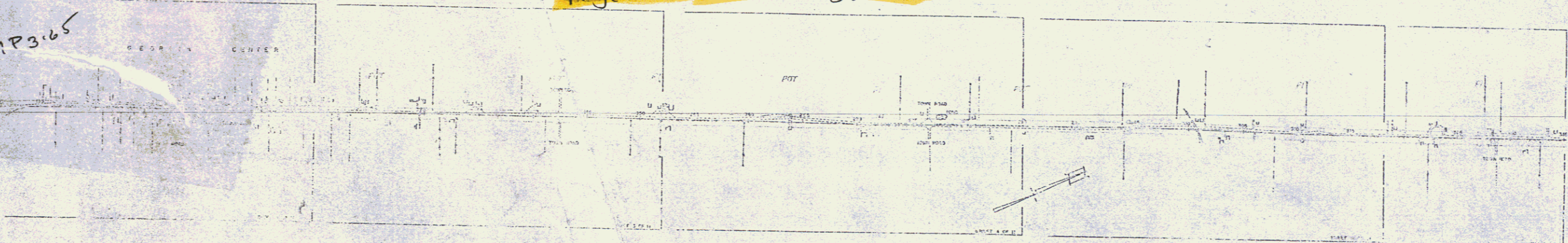
Pin# 99R387

PLAN OF RESURVEY OF PORTION OF ROUTE U.S. 7, IN THE TOWNS
OF GEORGIA AND ST. ALBANS FROM THE VICINITY OF GEORGIA CENTER
NORTHERLY TO THE ST. ALBANS CITY LIMITS - 1956

Project No. Resurvey/1956



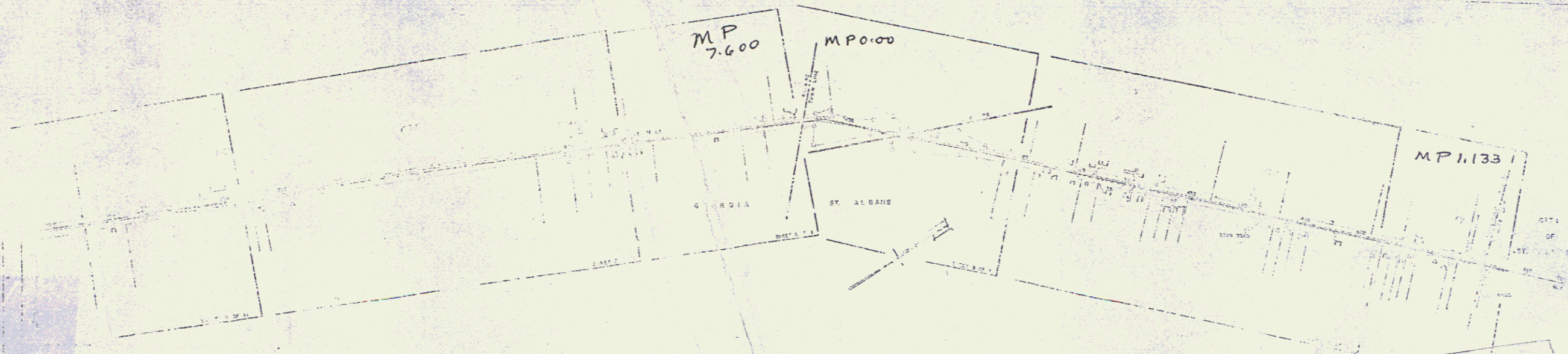
MP 3.65



MP 7.000

MP 0.000

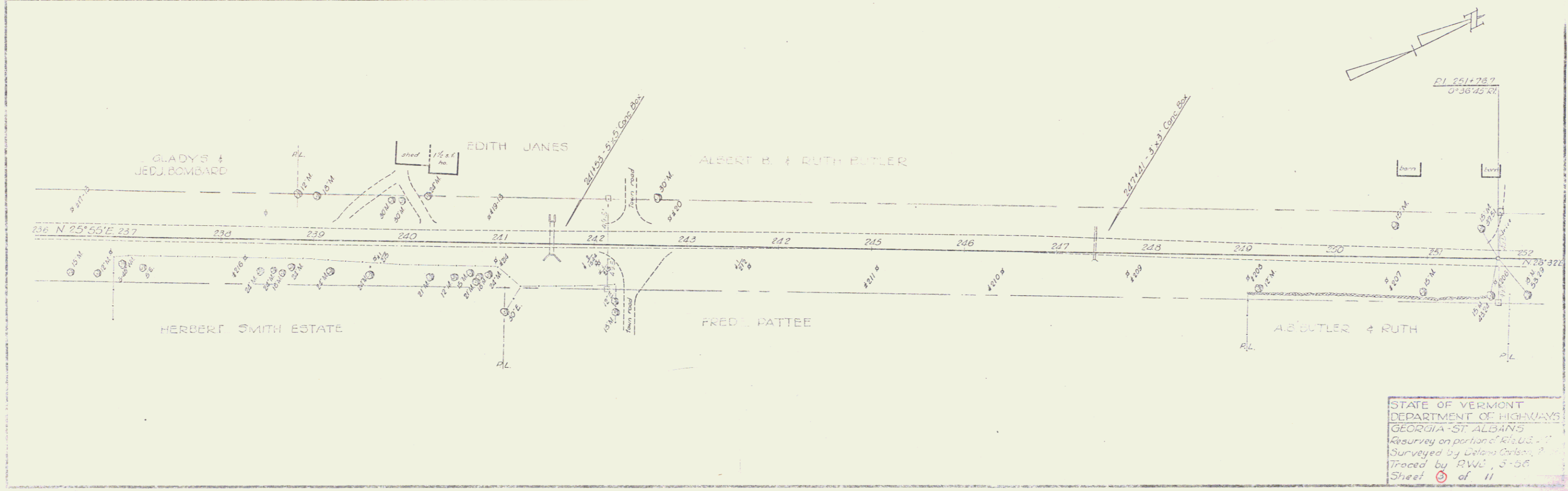
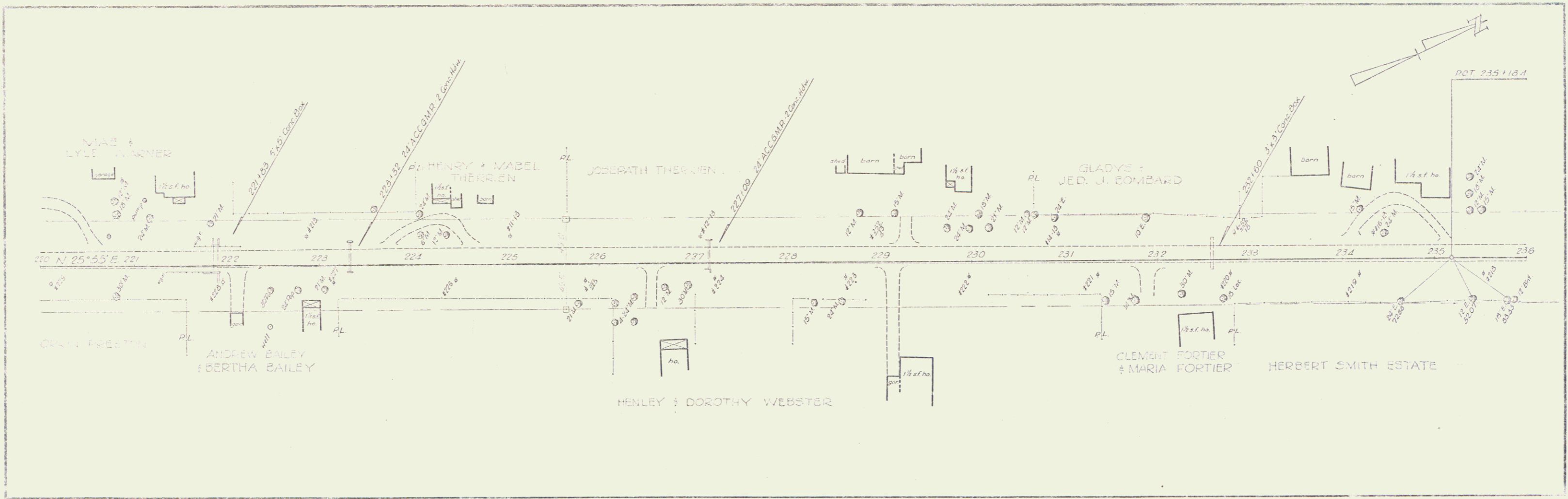
MP 1.133



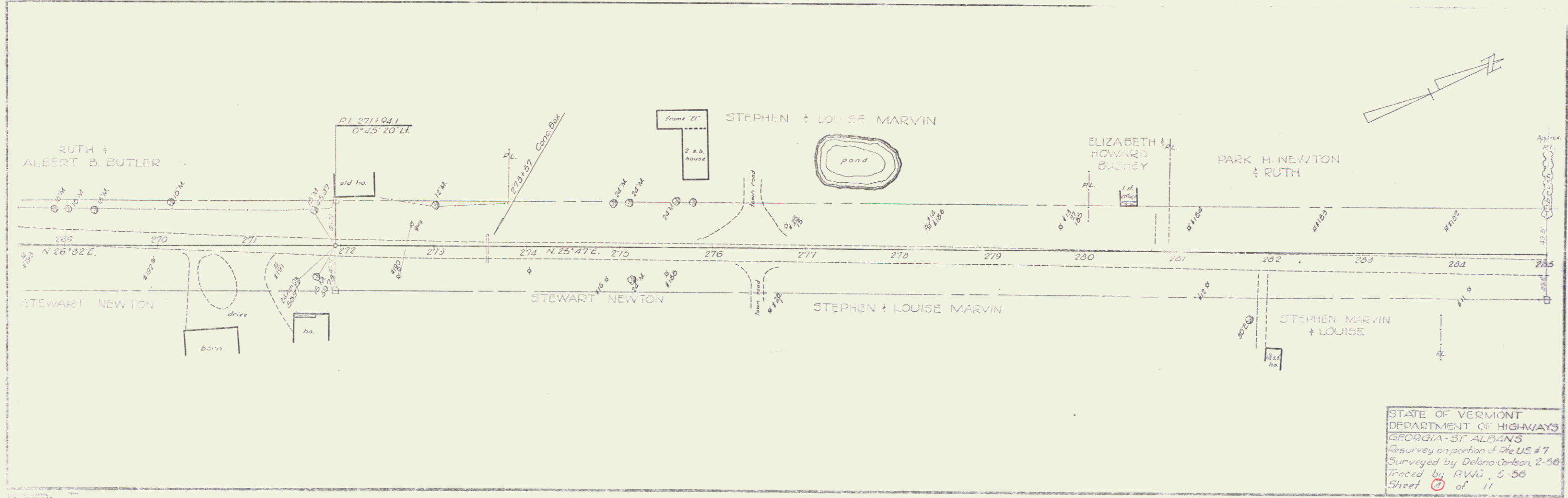
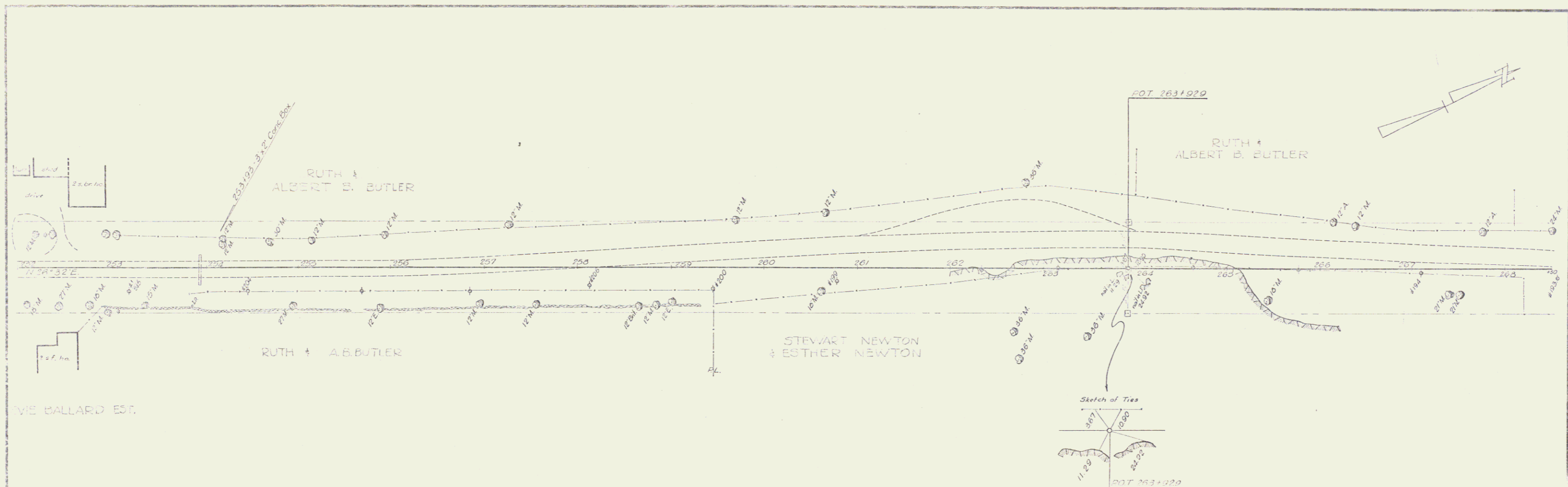
RIGHT-OF-WAY DIVISION
TOWN OF ST. ALBANS
PERPETUAL
To Board of 057
(To Be Returned To R.O.W. Division)

11/156

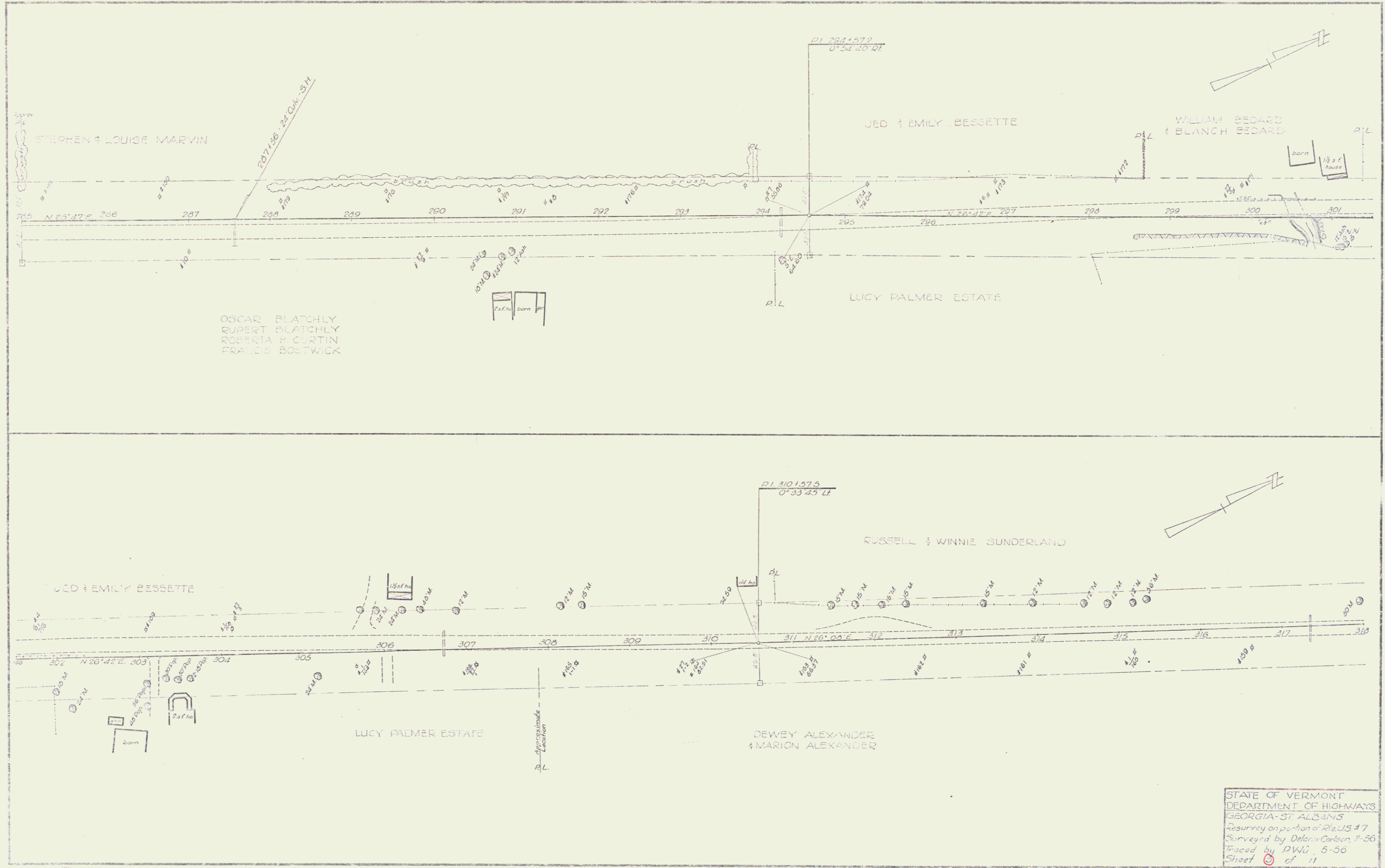
Checked 4/12/56
MLW



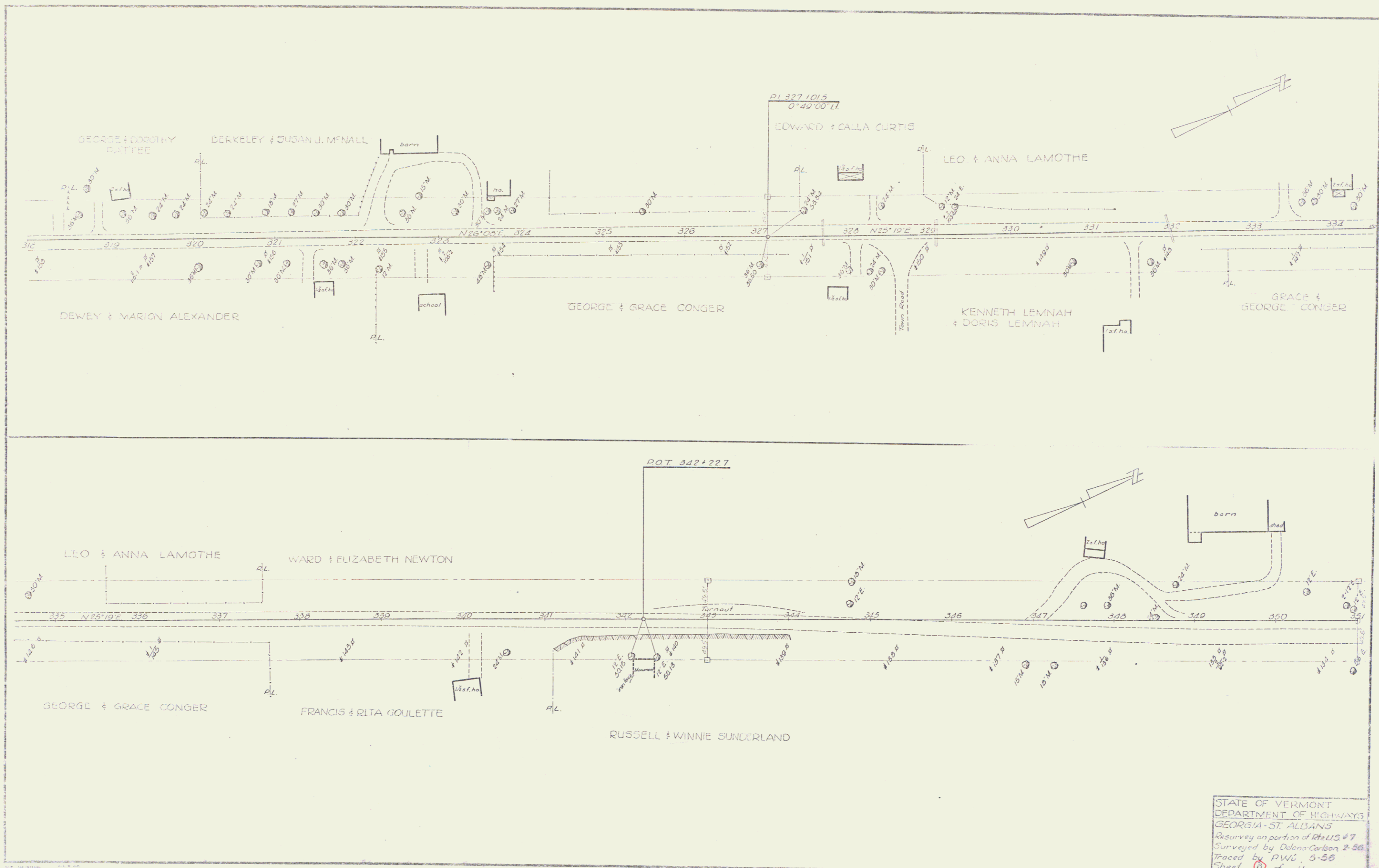
STATE OF VERMONT
 DEPARTMENT OF HIGHWAYS
 GEORGIA-ST. ALBANS
 Resurvey on portion of R1's U.S. 7
 Surveyed by Delano Corbin, 1907
 Traced by RWL, 5-58
 Sheet 6 of 11



STATE OF VERMONT
 DEPARTMENT OF HIGHWAYS
 GEORGIA-ST. ALBANS
 Resurvey on portion of Rte. US #7
 Surveyed by Delano Carbon, 2-56
 Traced by RWJ, 5-56
 Sheet 4 of 11



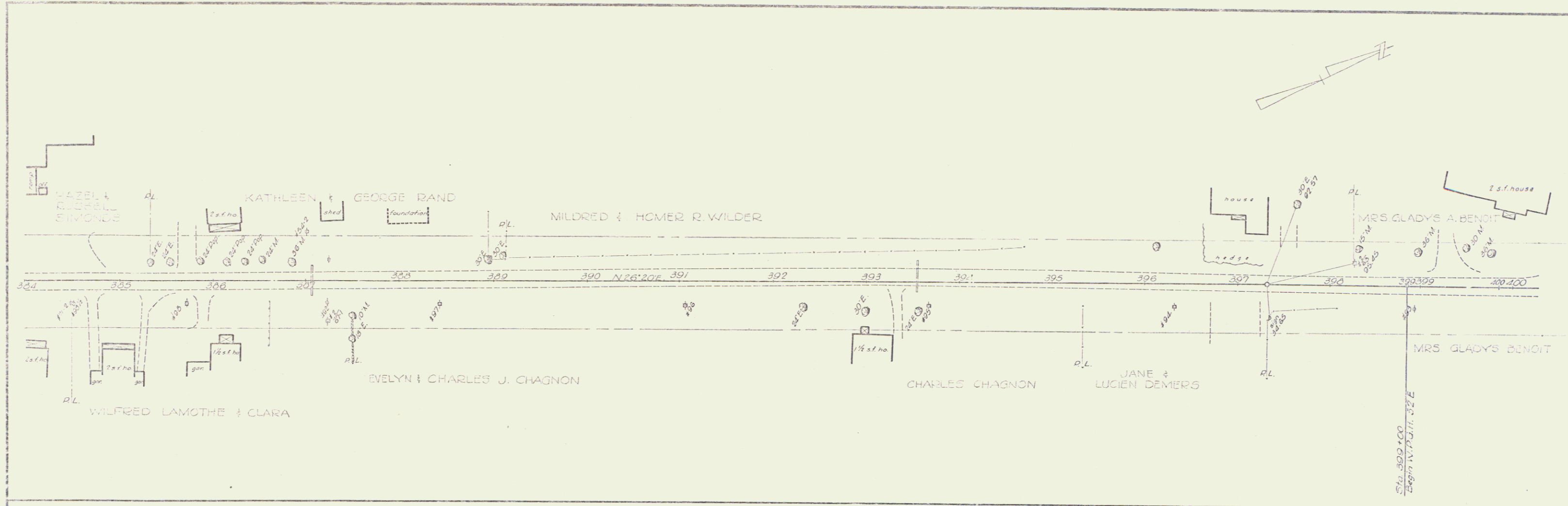
STATE OF VERMONT
 DEPARTMENT OF HIGHWAYS
 GEORGIA-ST ALBANS
 Resurvey on portion of Rte. US #7
 Surveyed by Delmar Carlson P-56
 Traced by DWJ, 5-56
 Sheet 5 of 11



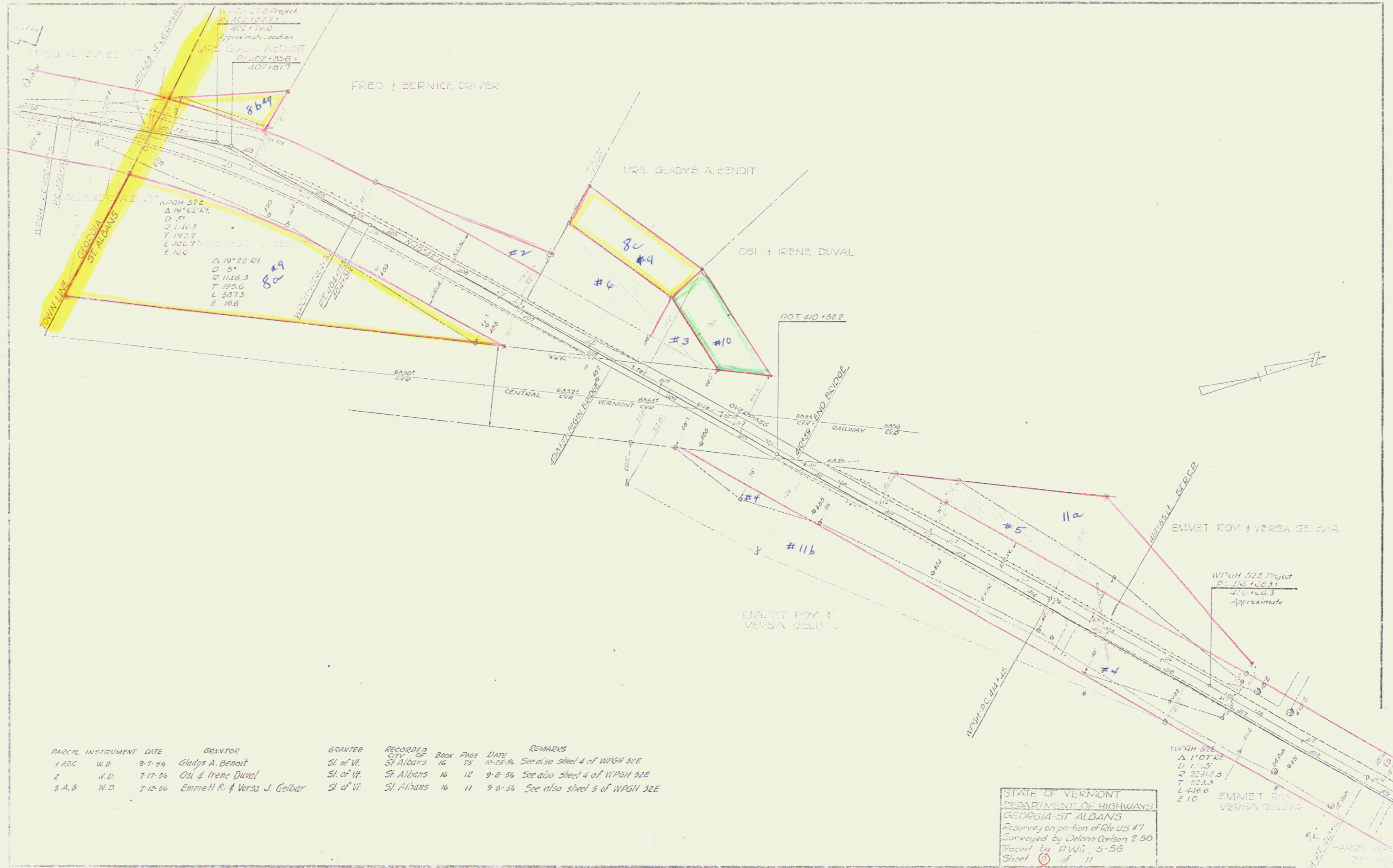
STATE OF VERMONT
 DEPARTMENT OF HIGHWAYS
 GEORGIA - ST. ALBANS
 Resurvey on portion of Rte US 27
 Surveyed by Delano-Carbon 2-56
 Traced by PWU, 5-56
 Sheet 6 of 11



STATE OF VERMONT
 DEPARTMENT OF HIGHWAYS
 GEORGIA - ST ALBANS
 Resurvey on portion of Rte US #7
 Surveyed by Dale C. Carlson, 2-56
 Traced by RWJ, 5-56
 Sheet 7 of 11



STATE OF VERMONT
 DEPARTMENT OF HIGHWAYS
 GEORGIA-ST. ALBANS
 Reurvey on portion of Rte. U.S. #1
 Surveyed by DeLano-Lambson 2-56
 Traced by P.W.S. 5-56
 Sheet 8 of 11

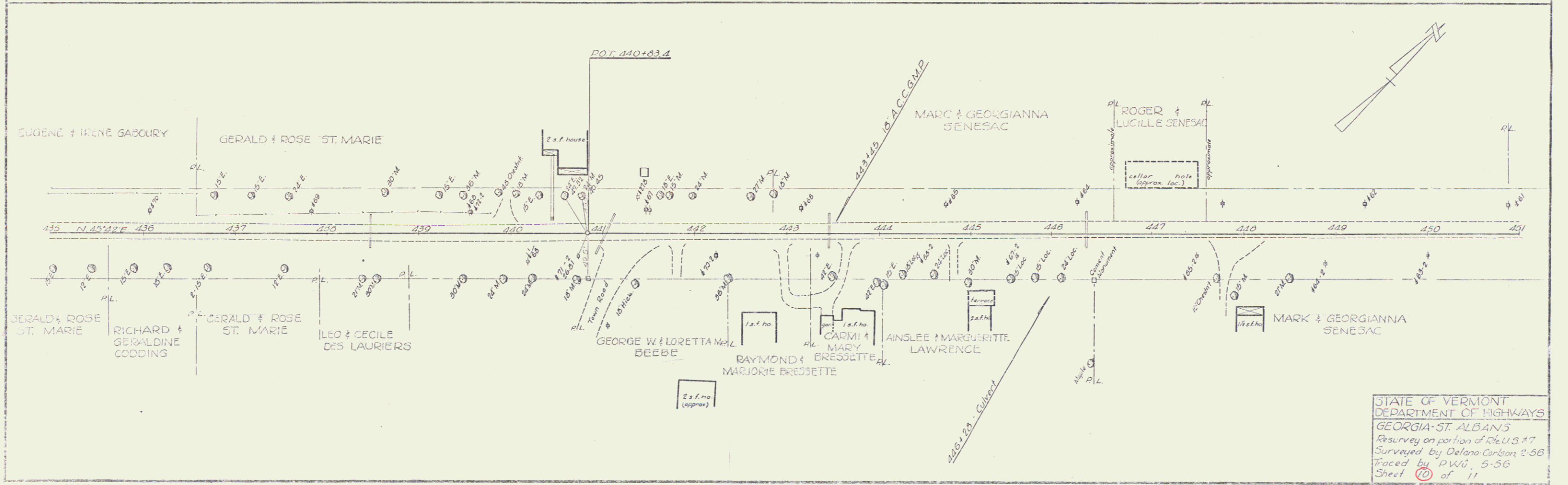
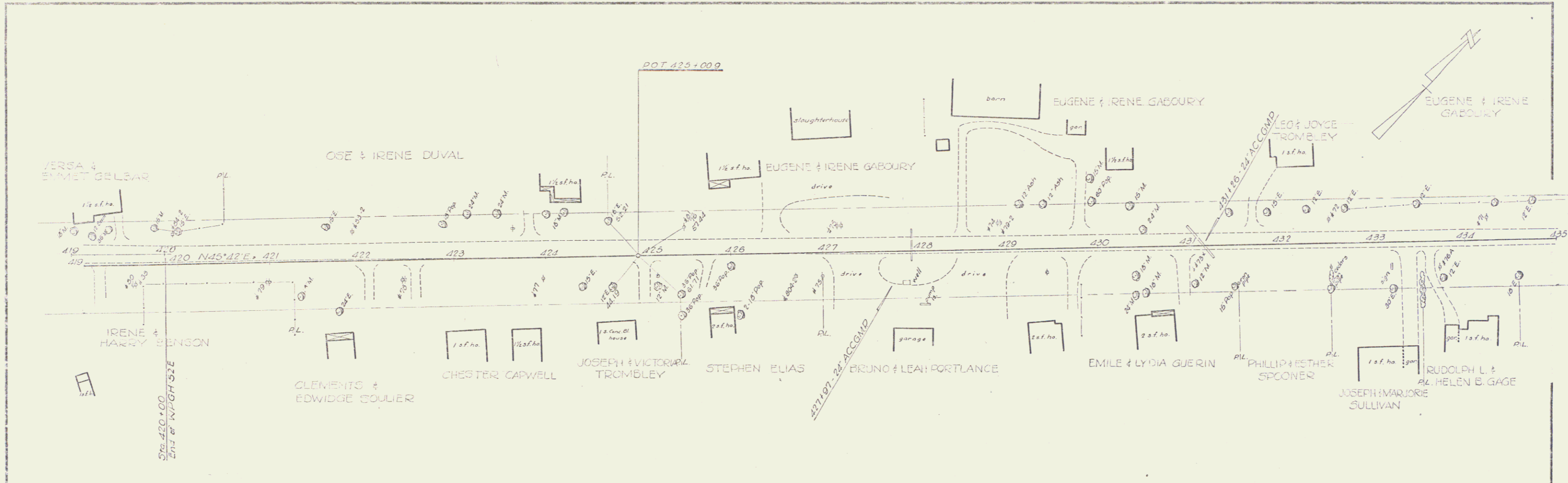


PARCEL	INSTRUMENT	DATE	GRANTOR	GRANTEE	RECORDED CITY OF	BOOK	PAGE	DATE	REMARKS
1	A.B.C.	W.D.	9-7-56	Gladys A. Benoit	St. of Vt.	St. Albans	16	73	See also sheet 4 of WPGH 52E
2		W.D.	7-17-56	Osi + Irene Duval	St. of Vt.	St. Albans	16	12	9-8-56 See also sheet 4 of WPGH 52E
3	A.B.	W.D.	7-12-56	Emmet H.R. + Versa J. Gelbar	St. of Vt.	St. Albans	16	11	9-8-56 See also sheet 5 of WPGH 52E

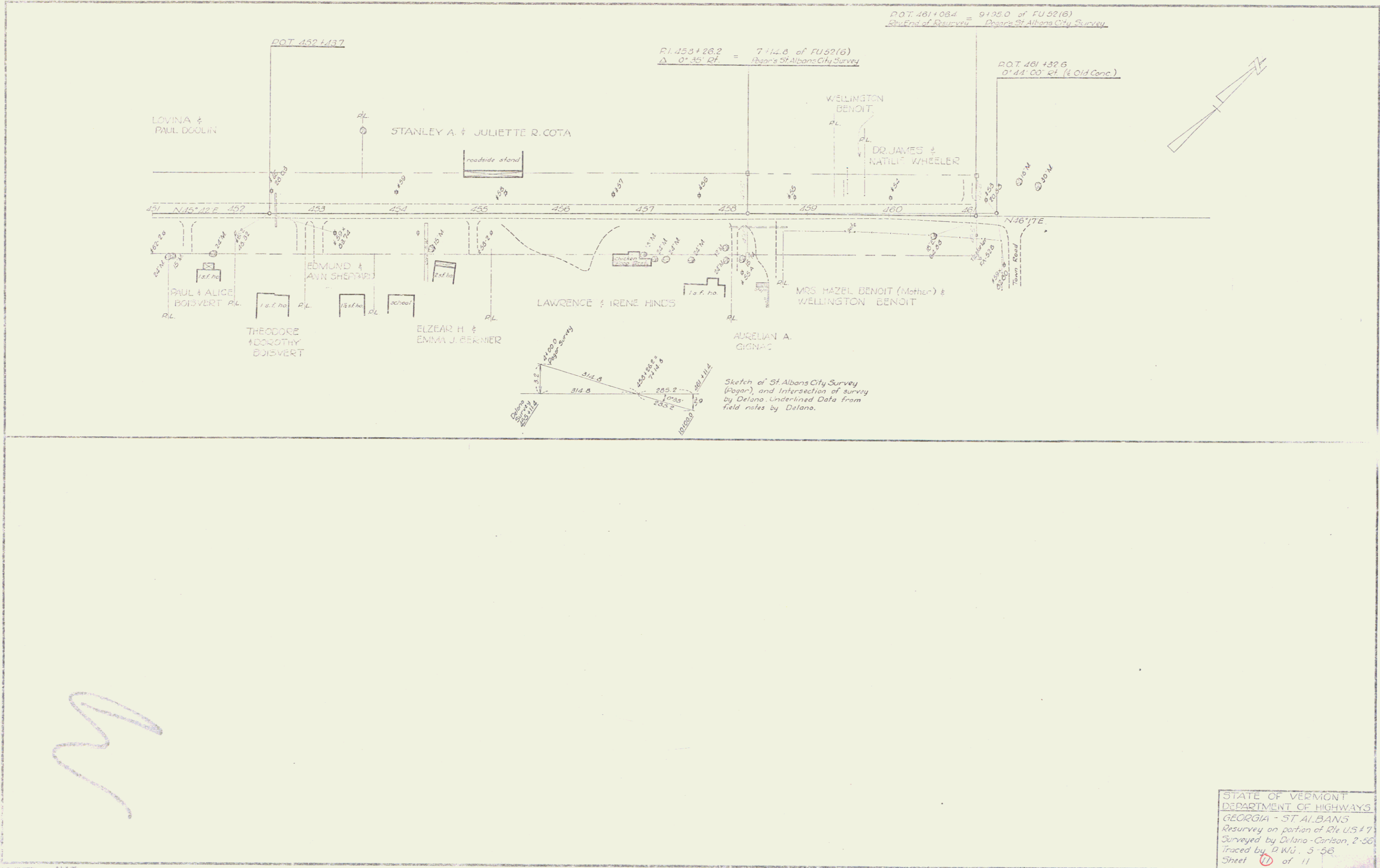
STATE OF VERMONT
 DEPARTMENT OF HIGHWAYS
 GEORGIA-ST. ALBANS
 Resurvey on portion of Rte US #1
 Surveyed by Delano Carlson 2-56
 Traced by P.W.J. 5-56
 Sheet 10 of 11

WPGH 52E Project
 P. 118 + 100.3
 476 + 100.3
 Approximate

WPGH 52E
 Δ 1°07' RT
 D 1.15'
 R 234.3
 T 234.3
 L 446.6
 E 1.0



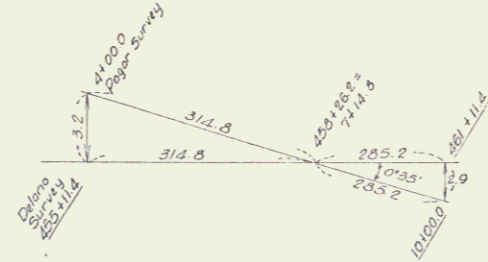
STATE OF VERMONT
DEPARTMENT OF HIGHWAYS
GEORGIA-ST. ALBAN'S
Resurvey on portion of Rte US #7
Surveyed by Delano Carlson 2-56
Traced by DWG, 5-56
Sheet 10 of 11



P.O.T. 461+084 = 9+35.0 of FU52(6)
 Sta. End of Resurvey Report St Albans City Survey

P.I. 453+26.2 = 7+12.8 of FU52(6)
 Δ 0° 35' 00" Report St Albans City Survey

P.O.T. 461+326
 0° 44' 00" St. (Old Conc.)



Sketch of St Albans City Survey (Pagan), and Intersection of survey by Delano. Underlined Data from field notes by Delano.

M

STATE OF VERMONT
 DEPARTMENT OF HIGHWAYS
 GEORGIA - ST ALBANS
 Resurvey on portion of Rte US#17
 Surveyed by Delano-Carlson, 2-56
 Traced by D.W.J., 5-56
 Sheet 11 of 11